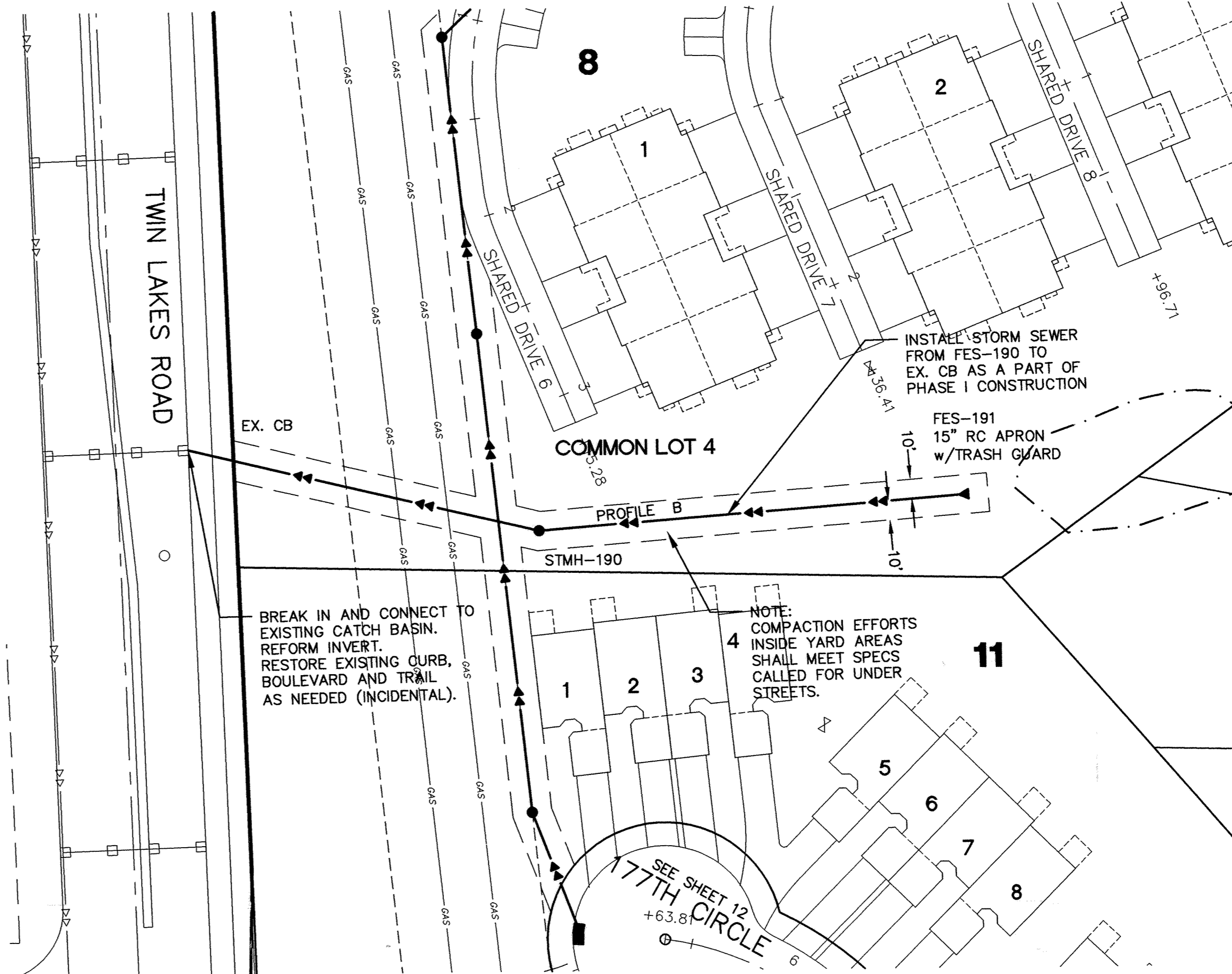




Profile A

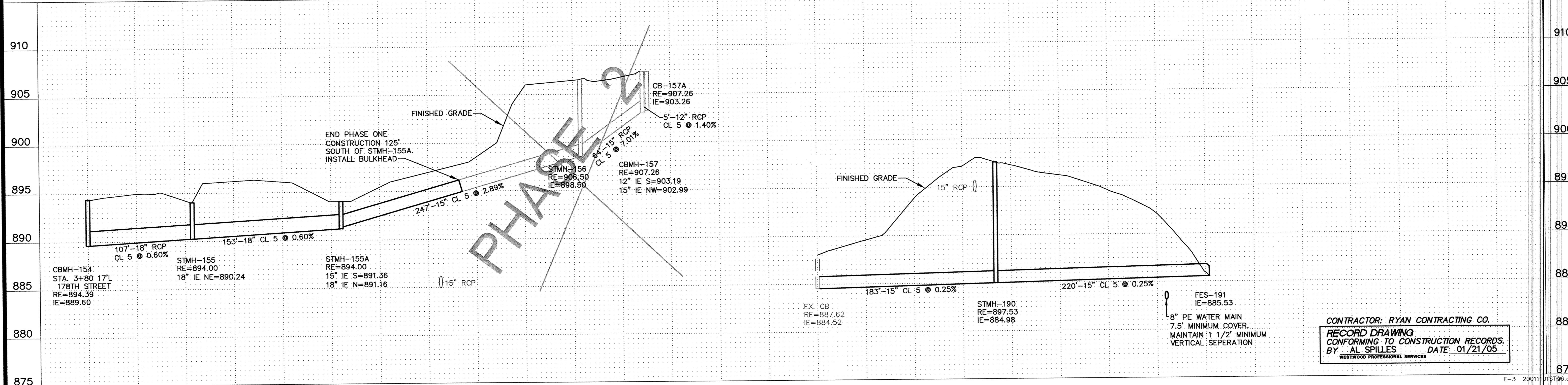
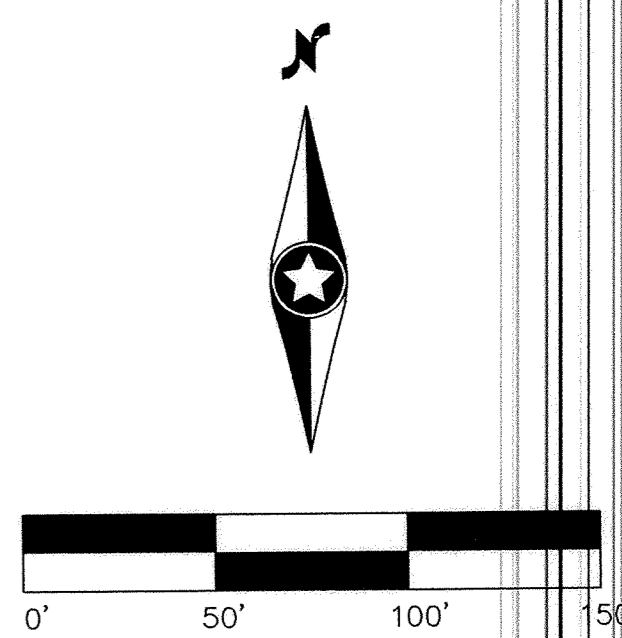


Profile B

Call 48 Hours before digging:  
**GOPHER STATE ONE CALL**  
 Twin City Area 651-454-0002  
 Mn. Toll Free 1-800-252-1166

- GENERAL NOTES:**
- RADIUS TO BE TYPE B618 CURB AND GUTTER WITH 5 FOOT TRANSITION FROM SURMOUNTABLE CURB PER CITY OF ELK RIVER STANDARDS.
  - TYPE B618 CURB & GUTTER SHALL BE CONSTRUCTED AT ALL INTERSECTIONS AND CATCH BASINS.
  - 28.09 = 928.09
  - RADIUS TO BE B618 C. & G. AS PER ELK RIVER DETAIL 2000 (TYP.)
  - STEEL ADJUSTING RINGS SHOULD BE USED FOR MANHOLE ADJUSTMENTS PRIOR TO WEAR COURSE PLACEMENT AND SHOULD BE TYPE R-1979.
  - DENOTES GUTTERLINE ELEVATION AT INTERSECTIONS

**CASTING NOTE:**  
 ALL CATCH BASIN CASTINGS IN CURB SHALL BE SUMPED 0.10 FEET AND MANHOLE CASTINGS IN PAVED AREAS SHALL BE SUMPED 0.05 FEET. RIM ELEVATIONS ON PLAN PROFILES REFLECT THE SUMPED ELEVATIONS.



CONTRACTOR: RYAN CONTRACTING CO.  
 RECORD DRAWING  
 CONFORMING TO CONSTRUCTION RECORDS.  
 BY AL SPILLES DATE 01/21/05  
 WESTWOOD PROFESSIONAL SERVICES

P:\20011101\dwg\RECORD\20011101.stb6.dwg 01/17/2005 09:48:38 AM CST

**Westwood Professional Services, Inc.**  
 7599 Anagram Drive  
 Eden Prairie, MN 55344  
 Phone: 952/937-5150 Fax: 952/937-5822

I hereby certify that this plan was prepared by me or under my direct supervision and that I am a duly licensed PROFESSIONAL ENGINEER under the laws of the State of Minnesota.  
**Francis D. Hagen, II**  
 Date: 01/21/05 License No. 17716

Revisions:  
 07/22/02 City Review-RNS  
 08/08/02 Vilsa Gate Valves Added-RNS  
 01/21/05 RECORD DRAWING (AS/CKB)

Designed: JMcC  
 Checked: FDH, II  
 Drawn: WH  
 Record Drawing by/date: AS 1/21/05

Prepared for:  
**Foray Real Estate & Construction**  
 9350 County Road 19  
 Corcoran, Minnesota 55357

**Trott Brook Crossing Phase One**  
 Elk River, Minnesota

Storm Sewer and Street Construction Plans  
 Rear Yards  
 Latest Revision Date: 01/21/05  
 Date: 06/14/02 Sheet: 13 OF 18

DRAWING NUMBER  
 TROTTC1.02  
 13  
 SAFCO PRODUCTS • NEW HAVEN, CONNECTICUT  
 REPRODUCED BY PART NUMBER 8532  
 SAFCO PRODUCTS • NEW HAVEN, CONNECTICUT  
 REPRODUCED BY PART NUMBER 8532  
 SAFCO PRODUCTS • NEW HAVEN, CONNECTICUT  
 REPRODUCED BY PART NUMBER 8532  
 SAFCO PRODUCTS • NEW HAVEN, CONNECTICUT  
 REPRODUCED BY PART NUMBER 8532