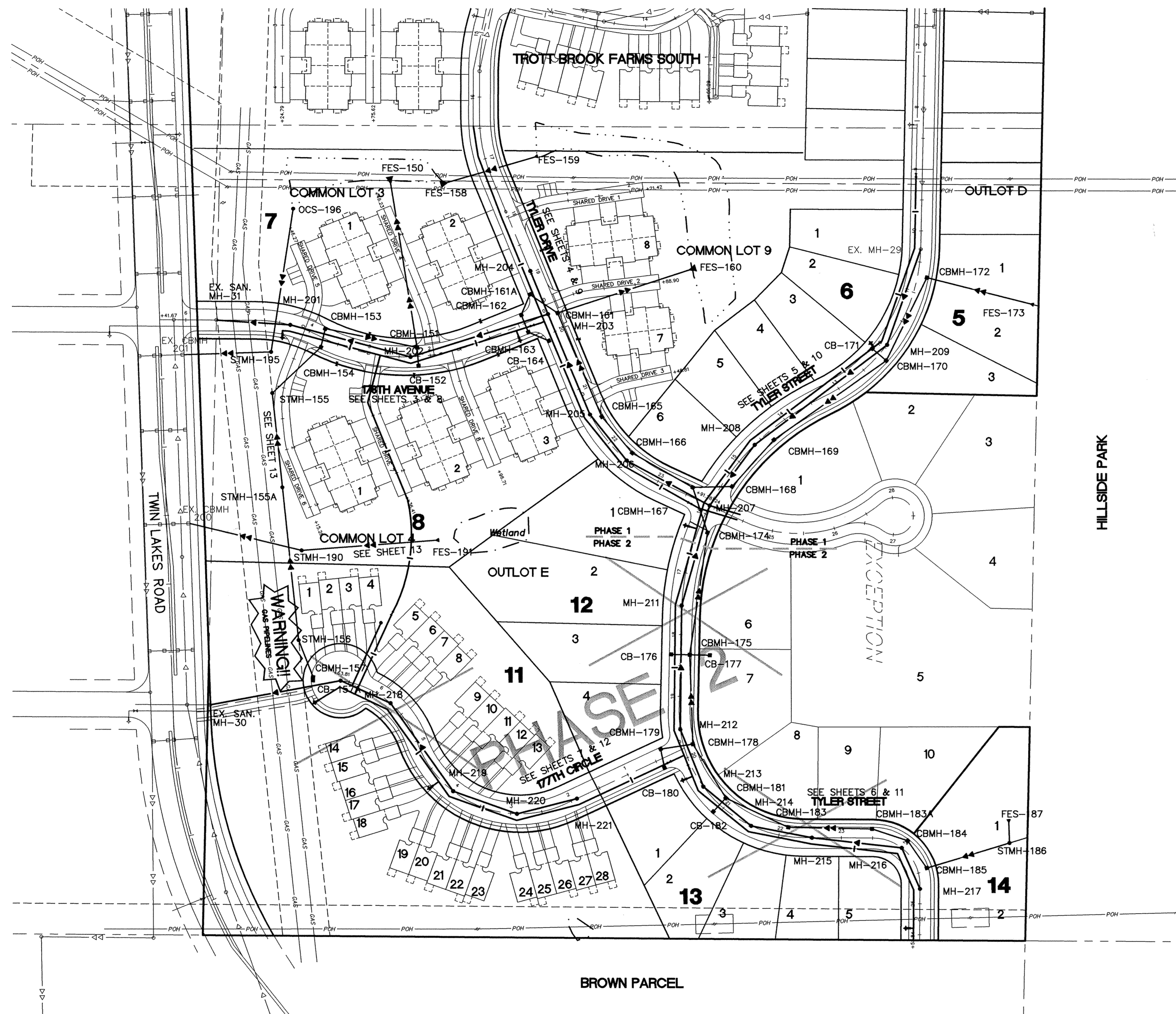


Call 48 Hours before digging:  
**GOPHER STATE ONE CALL**  
 Twin City Area 651-454-0002  
 Mn. Toll Free 1-800-252-1166

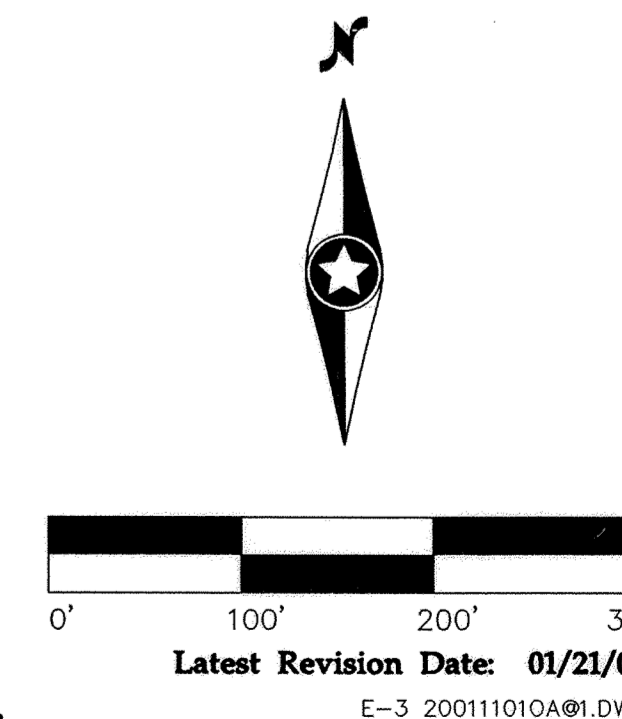


STORM SEWER CASTING SCHEDULE			
STRUCTURE			CASTING TYPE
NUMBER	TYPE	DIA.	
150	FES	24"	
151	CBMH	72"	R-3067
152	CB	2'x3'	R-3067
153	CBMH	60"	R-3067
154	CBMH	48"	R-3067
155	STMH	48"	R-1733
155A	STMH	48"	R-1733
156	STMH	48"	R-1733
157	CBMH	48"	R-3067
157A	CB	2'x3'	R-3067
158	FES	30"	
159	FES	30"	
160	FES	27"	
161	CBMH	48"	R-3067
161A	CBMH	48"	R-3067
162	CBMH	48"	R-3067
163	CBMH	48"	R-3067
164	CB	2'x3'	R-3067
165	CBMH	48"	R-3067
166	CBMH	48"	R-3067
167	CBMH	60"	R-3067
168	CBMH	48"	R-3067
169	CBMH	48"	R-3067
170	CBMH	48"	R-3067
171	CB	2'x3'	R-3067
172	CBMH	48"	R-3067
173	FES	15"	
174	CBMH	48"	R-3067
175	CBMH	48"	R-3067
176	CB	2'x3'	R-3067
177	CB	27"	R-4342
178	CBMH	48"	R-3067
179	CBMH	48"	R-3067
180	CB	2'x3'	R-3067
181	CBMH	48"	R-3067
182	CB	2'x3'	R-3067
183	CBMH	48"	R-3067
183A	CBMH	48"	R-3067
184	CBMH	48"	R-3067
185	CBMH	48"	R-3067
186	STMH	48"	R-1733
187	FES	15"	
190	STMH	48"	R-1733
191	FES	15"	
195	STMH	48"	R-1733
196	OCS	48"	SEE DETAIL

P:\20011101.dwg \RECORDED\20011101DME.dwg 01/17/2005 07:53:40 AM CST

LEGEND		
FUTURE	EXISTING	PROPOSED
Sanitary Sewer	Sanitary Sewer	Sanitary Sewer
Water	Water	Water
Hyd. w\Valve	Hyd. w\Valve	Hyd. w\Valve
Storm Sewer	Storm Sewer	Storm Sewer

CONTRACTOR: RYAN CONTRACTING CO.  
 RECORD DRAWING  
 CONFORMING TO CONSTRUCTION RECORDS.  
 BY AL SPILLES DATE 01/21/05  
 WESTWOOD PROFESSIONAL SERVICES



**Westwood Professional Services, Inc.**  
 7599 Anagram Drive  
 Eden Prairie, MN 55344  
 Phone: 952/937-5150 Fax: 952/937-5822

I hereby certify that this plan was prepared by me or under my direct supervision and that I am a duly licensed PROFESSIONAL ENGINEER under the laws of the State of Minnesota.  
  
**Francis D. Hagen, II**  
 Date: 01/21/05 License No. 17716

Revisions:  
 07/22/02 City Review-RNS  
 09/09/02 Villa Gate Valves Added-RNS  
 01/21/05 RECORD DRAWING (AS/GR)

Designed: JMM  
 Checked: FDH, II  
 Drawn: RNS/WH  
 Record Drawing by/Date: AS 1/21/05

Prepared for:  
**Foray Real Estate & Construction**  
 9350 County Road 19  
 Corcoran, Minnesota 55357

**Trott Brook Crossing Phase One**  
 Elk River, Minnesota

Overall Plan

Date: 06/14/02 Sheet: 2 OF 18

DRAWING NUMBER

DRAWING NUMBER

DRAWING NUMBER

DRAWING NUMBER