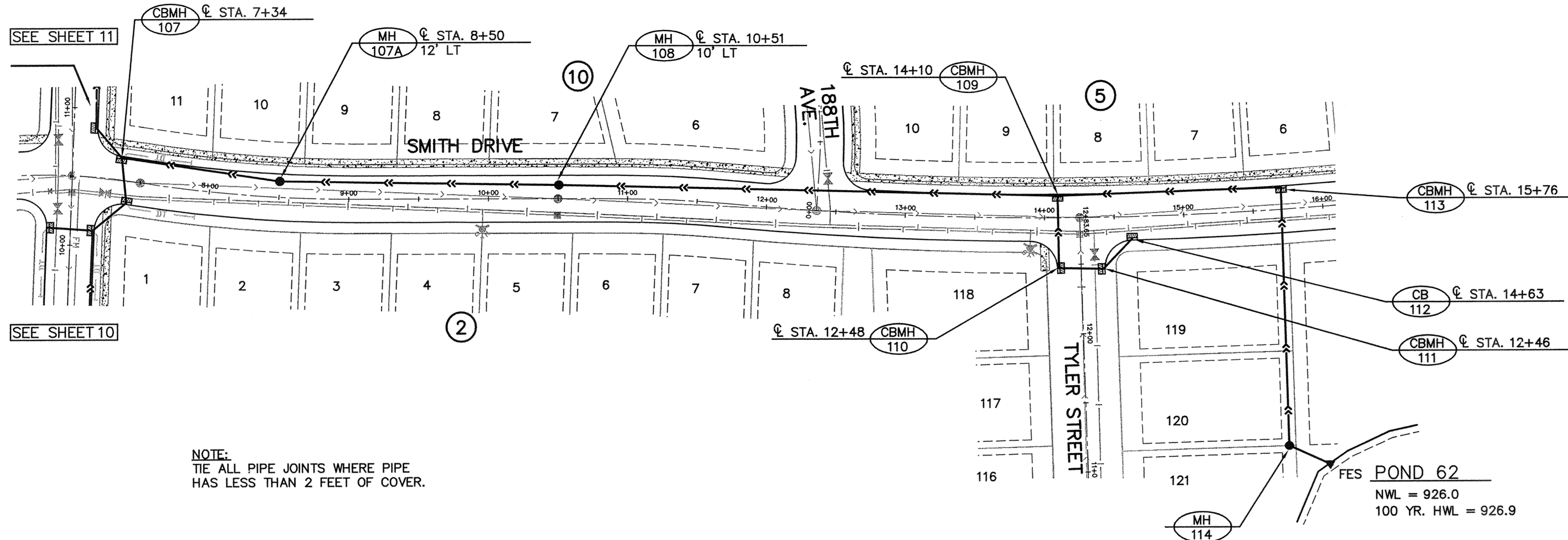
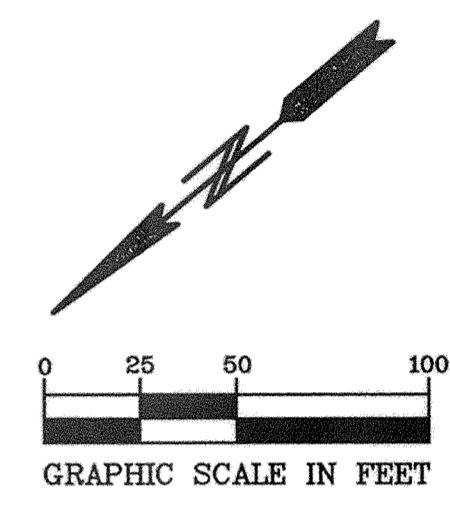


TWIN LAKES PARKWAY



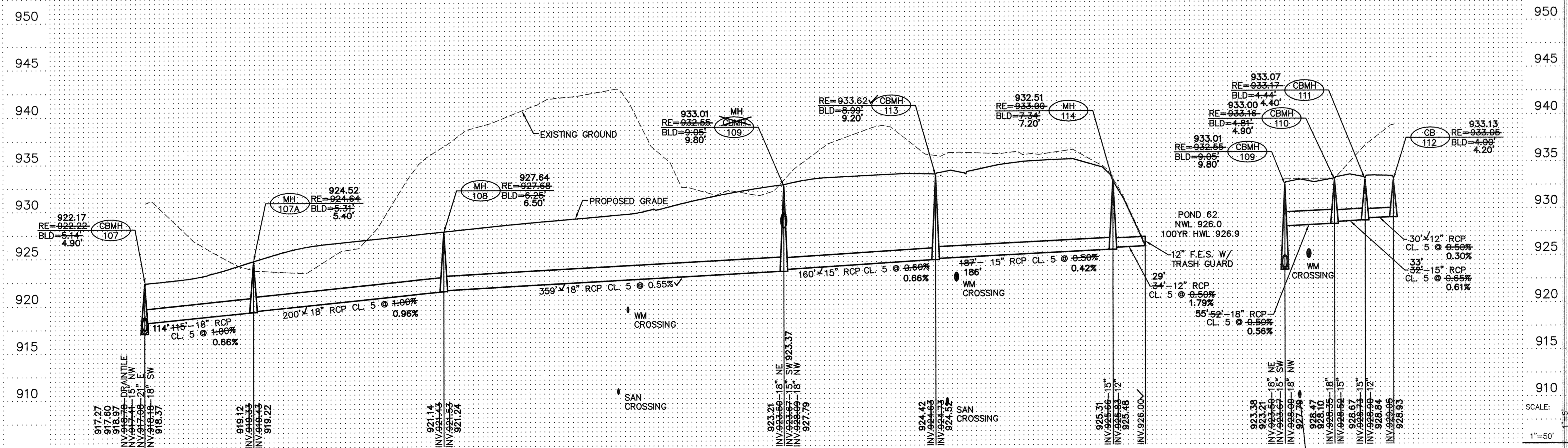
RECORD PLAN 2005  
 CONTRACTOR  
 RYAN CONTRACTING  
 8700 13TH AVE.  
 SHAKOPEE, MN  
 (952) 894-3200



NOTE:  
 TIE ALL PIPE JOINTS WHERE PIPE  
 HAS LESS THAN 2 FEET OF COVER.

SMITH DRIVE

BENCH MARKS  
 CAST IRON MONUMENT: NORTHEAST CORNER  
 OF SEC. 35, TWP. 33, RNG. 26.  
 ELEVATION = 904.80  
 CAST IRON MONUMENT: NORTH QUARTER  
 CORNER OF SEC. 35, TWP. 33, RNG. 26.  
 ELEVATION = 935.67



- 5. STREET NAMES
- 6. AS-BUILT

**PIONEER engineering**  
 201 92th Avenue NW  
 Coon Rapids, MN 55433  
 (763) 783-1880 FAX: 763-1883  
 2322 Enterprise Drive  
 Shakopee, MN 55002  
 (952) 881-1814 FAX: 881-1488

I hereby certify that this plan was prepared by me or under my direct supervision and that I am a duly Licensed Professional Engineer under the laws of the State of Minnesota.

Name: *Paul J. Chene*  
 Reg. No. 19880 Date 7/16/04

Revisions  
 1. 8/4/04  
 2. 9/27/04  
 3. 9/2/04  
 4. 10/20/04

Date 7/16/04  
 Designed P.J.C.  
 Drawn JTR

SHEET TITLE  
**STORM SEWER CONSTRUCTION**

OWNER **RYAN CONSTRUCTION CO.**  
 8700 13TH AVENUE EAST  
 SHAKOPEE, MINNESOTA 55379

PROJECT **TWIN LAKES ESTATES**  
 ELK RIVER

SHEET 12 OF 24 SHEETS

TWINLAKEEST 05  
 12  
 SAICO PRODUCTS • NEW HOPKIN, MINNESOTA  
 REORDER BY PART NUMBER 8532  
 SAICO PRODUCTS • NEW HOPKIN, MINNESOTA  
 REORDER BY PART NUMBER 8532  
 SAICO PRODUCTS • NEW HOPKIN, MINNESOTA  
 REORDER BY PART NUMBER 8532  
 SAICO PRODUCTS • NEW HOPKIN, MINNESOTA  
 REORDER BY PART NUMBER 8532