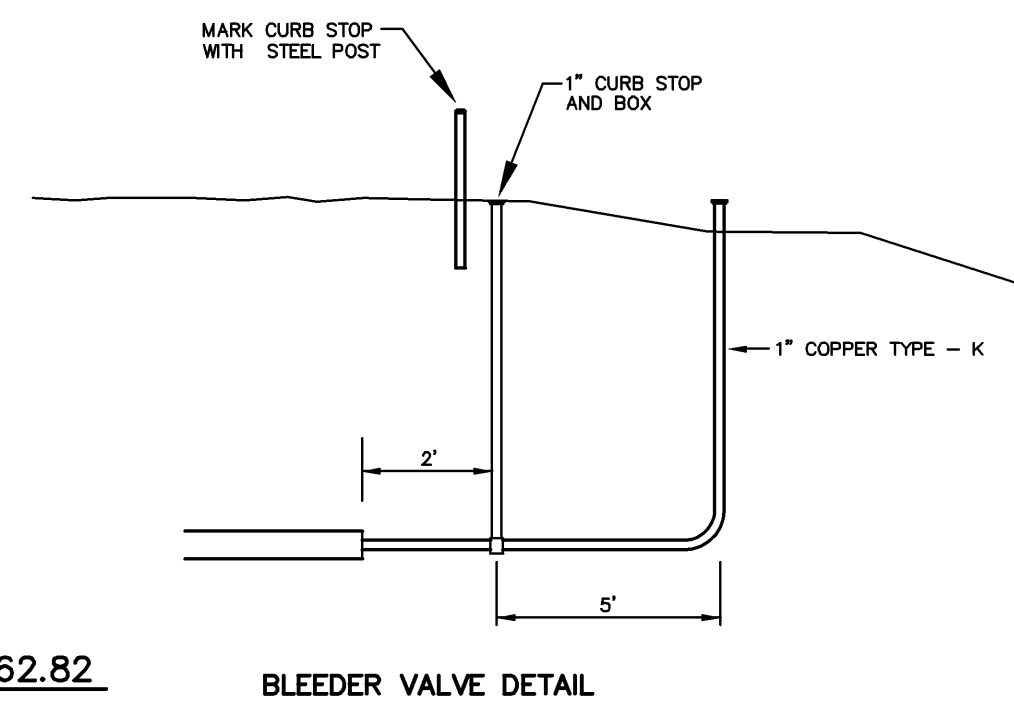


RECORD PLAN 2009
 CONTRACTOR
 RYAN CONTRACTING CO.
 PO BOX 246
 ELKO, MINNESOTA 55020
 (952) 894-3200

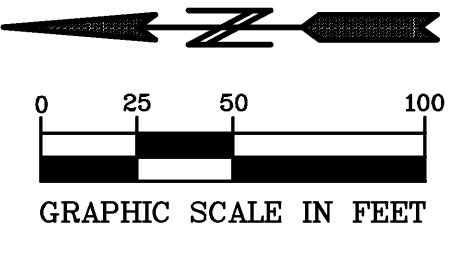
- GENERAL NOTES:
- 1.) SANITARY SEWER SERVICES SHALL BE 4" PVC SDR-35.
 - 2.) SANITARY SEWER SERVICE WYES ARE STATIONED FROM DOWN STREAM MANHOLE.
 - 3.) WATER SERVICES SHALL BE 1" COPPER TYPE "K" W/ 7.5' MINIMUM COVER.
 - 4.) SANITARY SEWER INVERTS ARE SHOWN AT THE SERVICE STUB NEAR CURB STOP.
 - 5.) SANITARY SEWER AND WATER SERVICES SHALL BE CONSTRUCTED 15' BEYOND RIGHT-OF-WAY.



BENCH MARKS

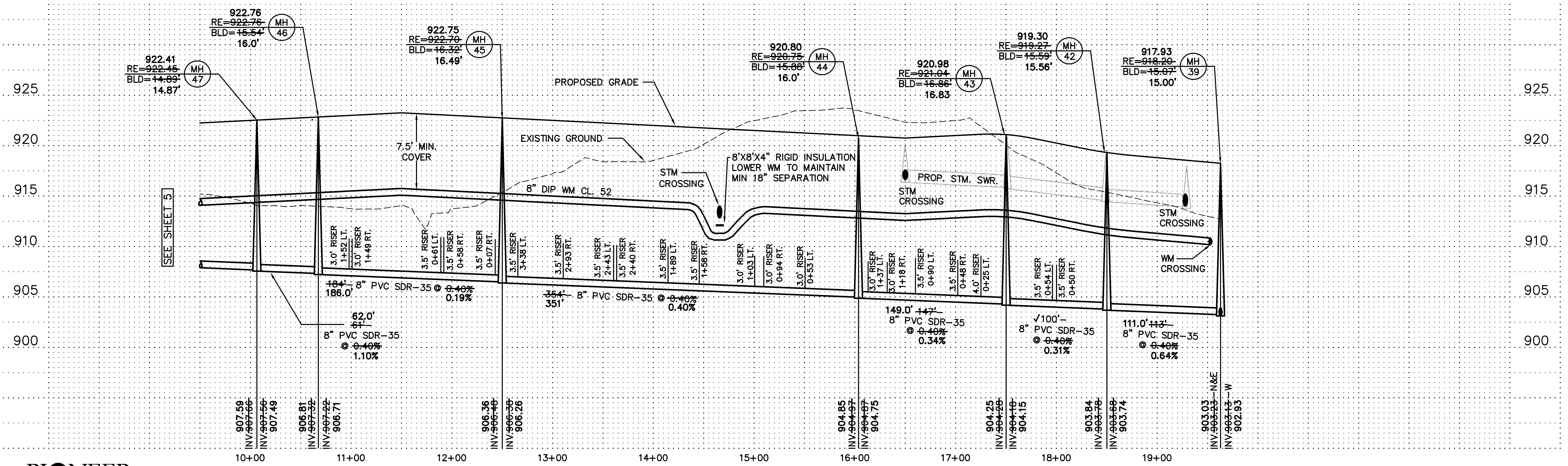
CAST IRON MONUMENT: NORTHEAST CORNER OF SEC. 35, TWP. 33, RNG. 26. ELEVATION = 904.80

CAST IRON MONUMENT: NORTH QUARTER CORNER OF SEC. 35, TWP. 33, RNG. 26. ELEVATION = 935.67



190TH AVENUE ← | →

QUINCY STREET



PIONEER engineering
 CIVIL ENGINEERS LAND PLANNERS LAND SURVEYORS LANDSCAPE ARCHITECTS

I hereby certify that this plan was prepared by me or under my direct supervision and that I am a duly Licensed Professional Engineer under the laws of the State of Minnesota.

Name: Paul J. Chene
 Reg. No.: 19860
 Date: 3/10/05

Revisions:
 1. 07/08/05
 2. 10/05/05
 3. 24/10

Date: 3/10/05
 Designed: A.M.H.
 Drawn: AMH

SANITARY SEWER & WATERMAIN

RYAN CONTRACTING CO.
 PO BOX 246
 ELKO, MINNESOTA 55020

TWIN LAKES ESTATES 2ND ADDITION
 ELK RIVER, MINNESOTA

RECORD PLAN 10-5-09