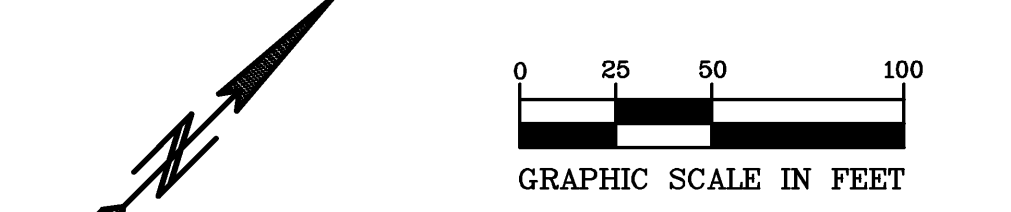
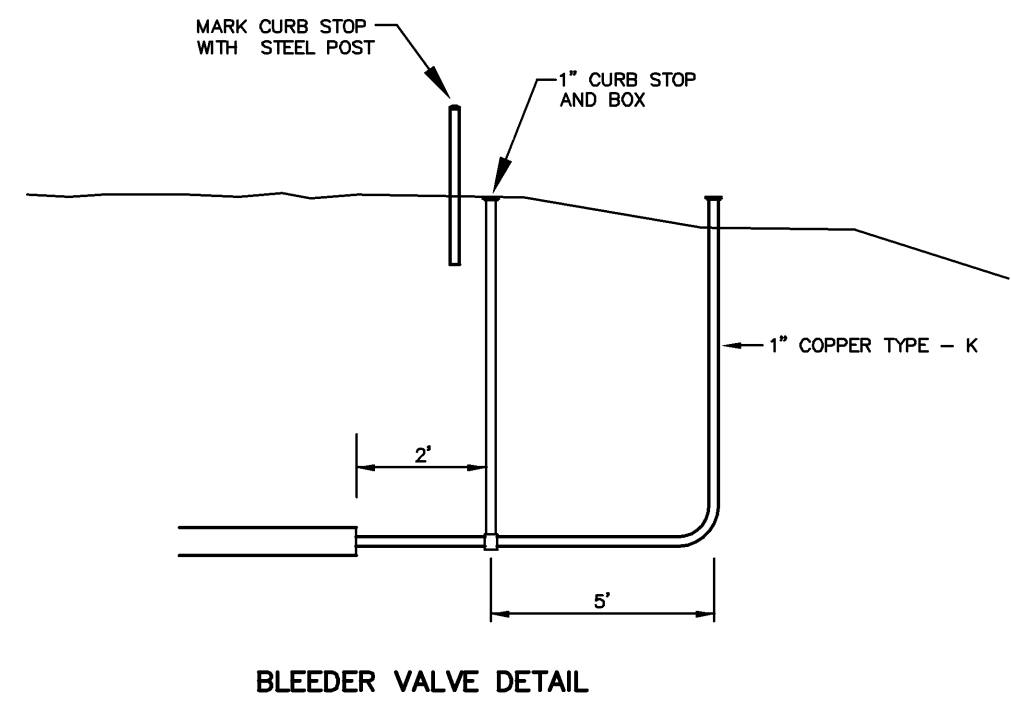


- GENERAL NOTES:**
- 1.) SANITARY SEWER SERVICES SHALL BE 4" PVC SDR-35.
  - 2.) SANITARY SEWER SERVICE WYES ARE STATIONED FROM DOWN STREAM MANHOLE.
  - 3.) WATER SERVICES SHALL BE 1" COPPER TYPE "K" W/ 7.5' MINIMUM COVER.
  - 4.) SANITARY SEWER INVERTS ARE SHOWN AT THE SERVICE STUB NEAR CURB STOP.
  - 5.) SANITARY SEWER AND WATER SERVICES SHALL BE CONSTRUCTED 15' BEYOND RIGHT-OF-WAY.



**BENCH MARKS**

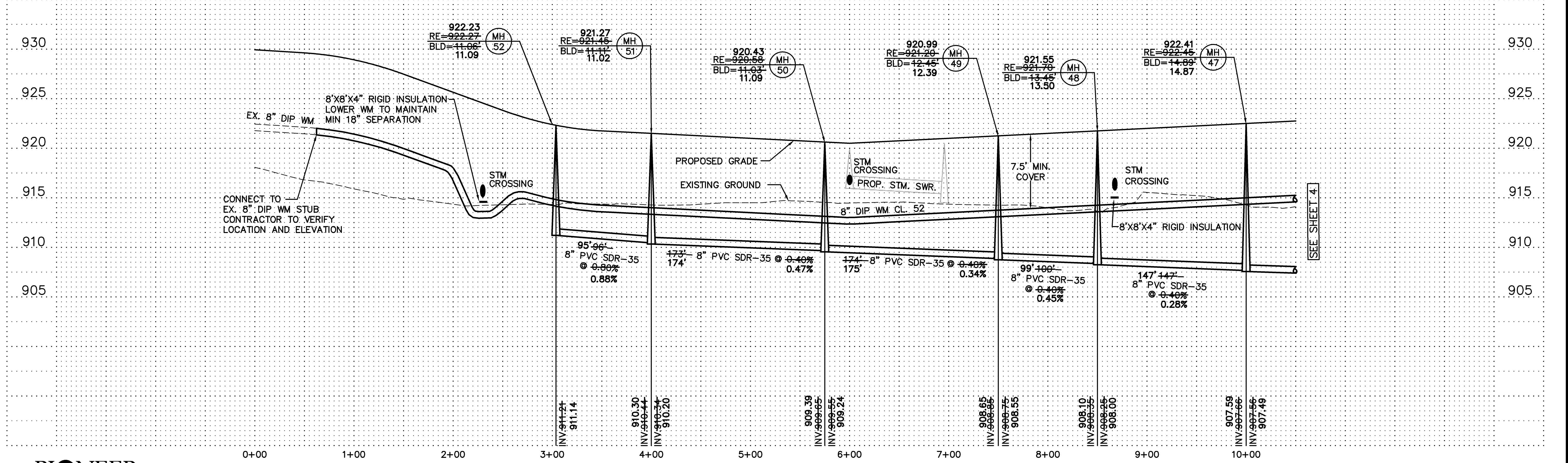
CAST IRON MONUMENT: NORTHEAST CORNER OF SEC. 35, TWP. 33, RNG. 26. ELEVATION = 904.80

CAST IRON MONUMENT: NORTH QUARTER CORNER OF SEC. 35, TWP. 33, RNG. 26. ELEVATION = 935.67

RECORD PLAN 2009

CONTRACTOR

RYAN CONTRACTING CO.  
PO BOX 246  
ELKO, MINNESOTA 55020  
(952) 894-3200



**PIONEER** engineering

CIVIL ENGINEERS LAND PLANNERS LAND SURVEYORS LANDSCAPE ARCHITECTS

I hereby certify that this plan was prepared by me or under my direct supervision and that I am a duly Licensed Professional Engineer under the laws of the State of Minnesota.

Name: *Paul J. Cherno*  
Reg. No. 19860 Date: 3/10/05

Revisions

1. 07/08/05  
2. 10/05/09  
3. 24/10

Date: 3/10/05  
Designed: A.M.H.  
Drawn: AMH

SANITARY SEWER & WATERMAIN

RYAN CONTRACTING CO.  
PO BOX 246  
ELKO, MINNESOTA 55020

TWIN LAKES ESTATES 2ND ADDITION  
ELK RIVER, MINNESOTA

RECORD PLAN 10-5-09