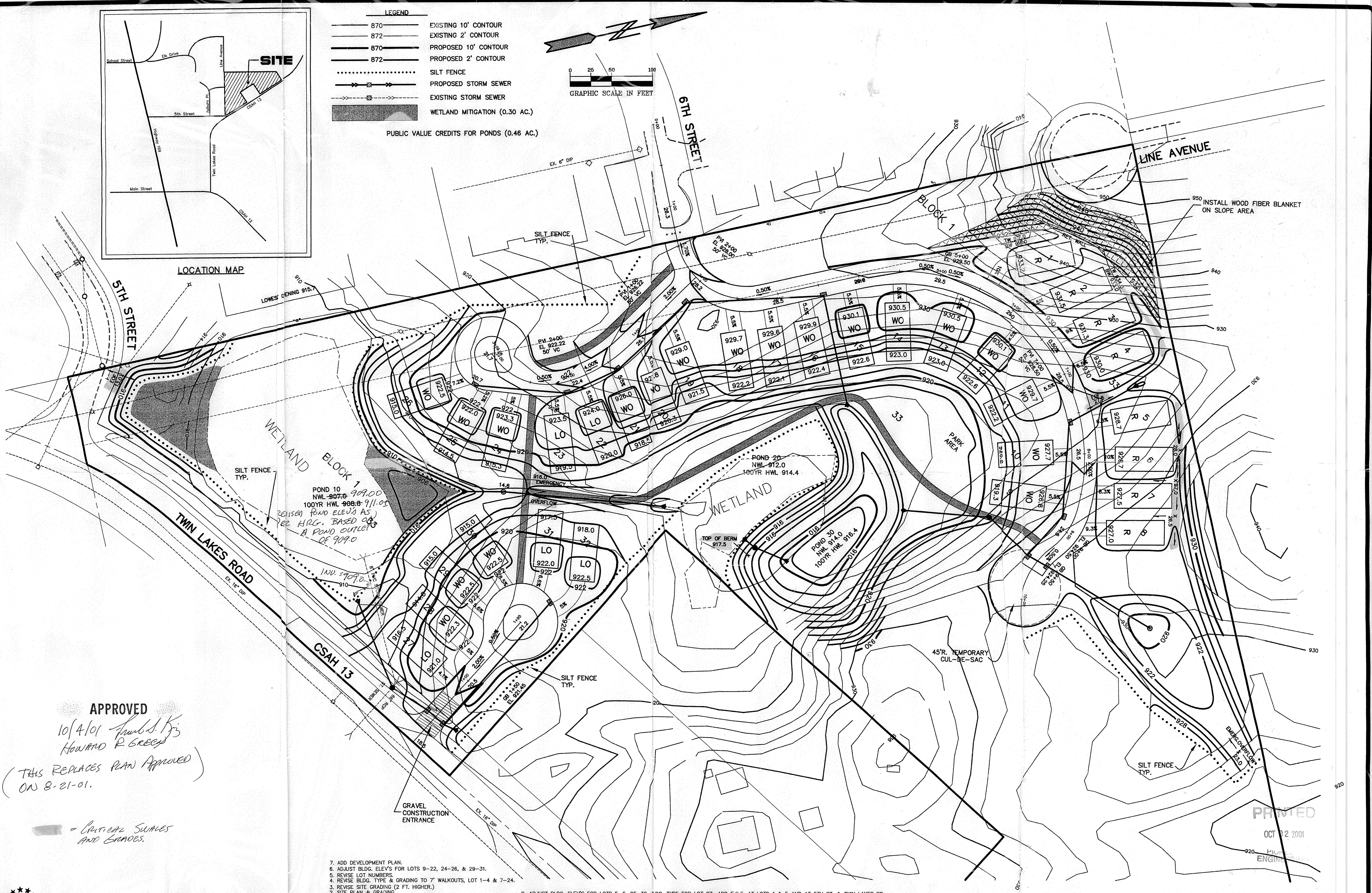
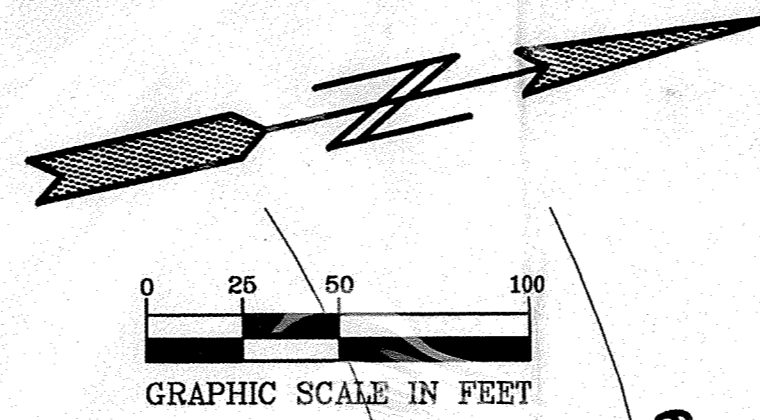


LOCATION MAP

- LEGEND**
- 870 — EXISTING 10' CONTOUR
  - 872 — EXISTING 2' CONTOUR
  - 870 — PROPOSED 10' CONTOUR
  - 872 — PROPOSED 2' CONTOUR
  - ..... SILT FENCE
  - >—>—> PROPOSED STORM SEWER
  - >—>—> EXISTING STORM SEWER
  - ▨ WETLAND MITIGATION (0.30 AC.)
- PUBLIC VALUE CREDITS FOR PONDS (0.46 AC.)



**APPROVED**  
 10/4/01 *Frank S. Kriz*  
 HOWARD R. GREEP  
 (THIS REPLACES PLAN APPROVED  
 ON 8-21-01.)

▨ = CRITICAL SWALES  
 AND GRADES.

7. ADD DEVELOPMENT PLAN.
8. ADJUST BLDG. ELEV'S FOR LOTS 9-22, 24-26, & 29-31.
9. REVERSE LOT NUMBERS.
10. REVISE BLDG. TYPE & GRADING TO 7' WALKOUTS, LOT 1-4 & 7-24.
11. REVISE SITE GRADING (2 FT. HIGHER.)
12. SITE PLAN & GRADING.
13. SITE PLAN & GRADING.
14. ADJUST BLDG. ELEV'S FOR LOTS 5, 6, 25-32; LDG. TYPE FOR LOT 27; ADD E.O.F. AT LOTS 4 & 5 AND AT 5TH ST. & TWIN LAKES RD.
15. ADJUST BLDG. ELEV'S FOR LOTS 9-23; BLDG. TPE FOR LOTS 22 & 23; ADD DRWY. GRADES.

**PIONEER engineering**  
 LAND SURVEYORS • CIVIL ENGINEERS  
 LAND PLANNERS • LANDSCAPE ARCHITECTS

I hereby certify that this plan was prepared by me or under my direct supervision and that I am a duly Licensed Professional Engineer under the laws of the State of Minnesota.  
 Name: *Paul J. Christie*  
 Reg. No.: 19880 Date: 8/15/00

Revisions	4. 11/20/00	8. 9/12/01	Date	8/15/00
1.	8/18/00	5. 1/23/01	9.	9/26/01
2.	9/2/00	6. 5/7/01	Designed	PJC
3.	9/15/00	7. 8/16/01	Drawn	SAG

SHEET TITLE: DEVELOPMENT AND GRADING & EROSION CONTROL PLAN  
 OWNER: PHOENIX ENTERPRISES  
 19230 EVANS STREET  
 ELK RIVER, MINNESOTA 55330

PROJECT: TWIN LAKES TOWNHOMES  
 SHEET 1 OF 2 SHEETS

PRINTED  
 OCT 12 2001  
 PHOENIX ENGINEERS