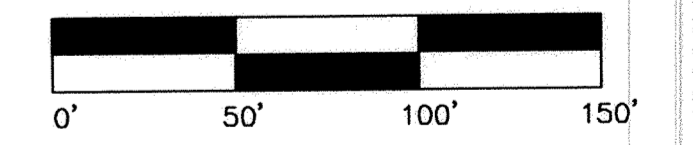
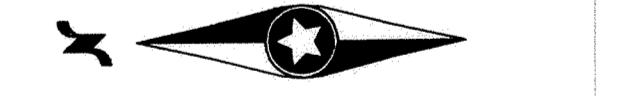
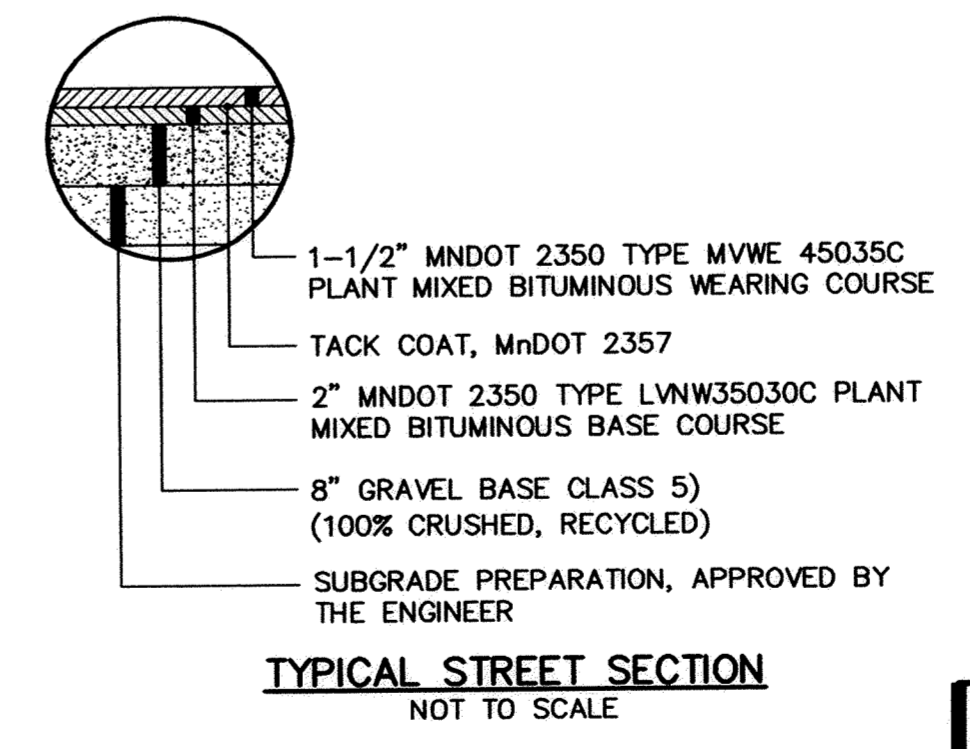
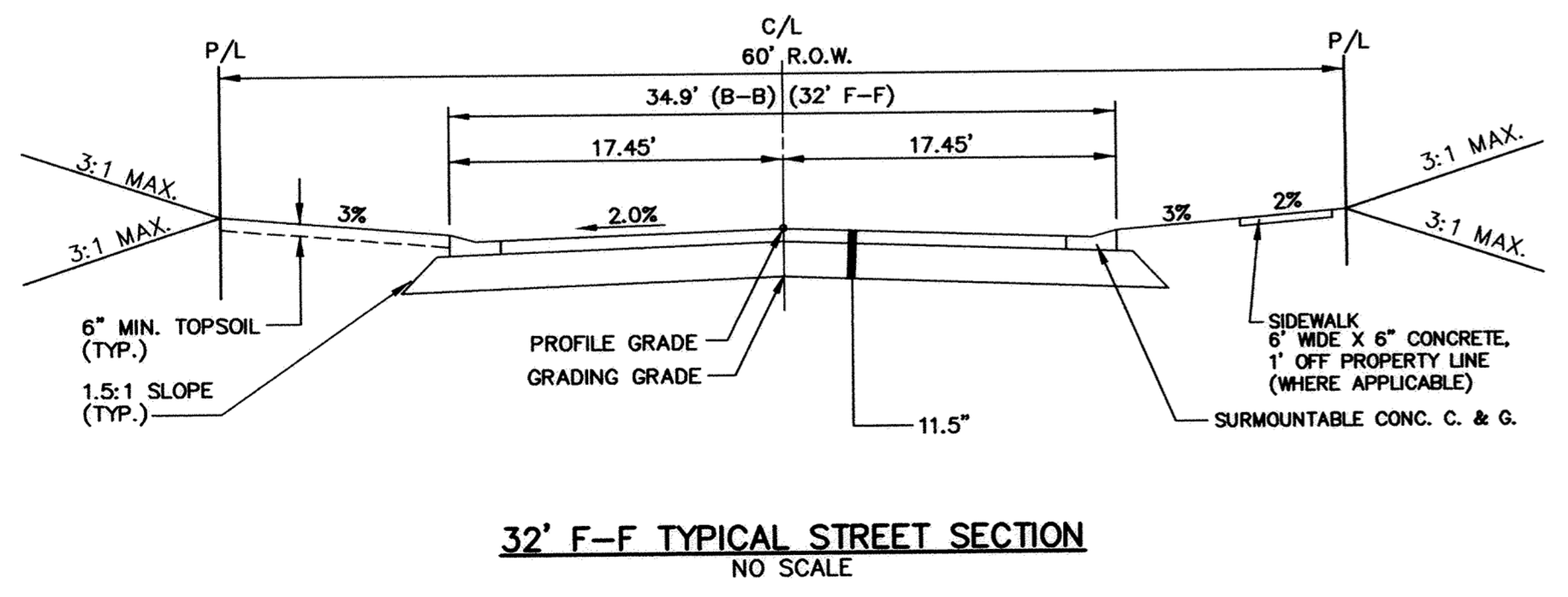
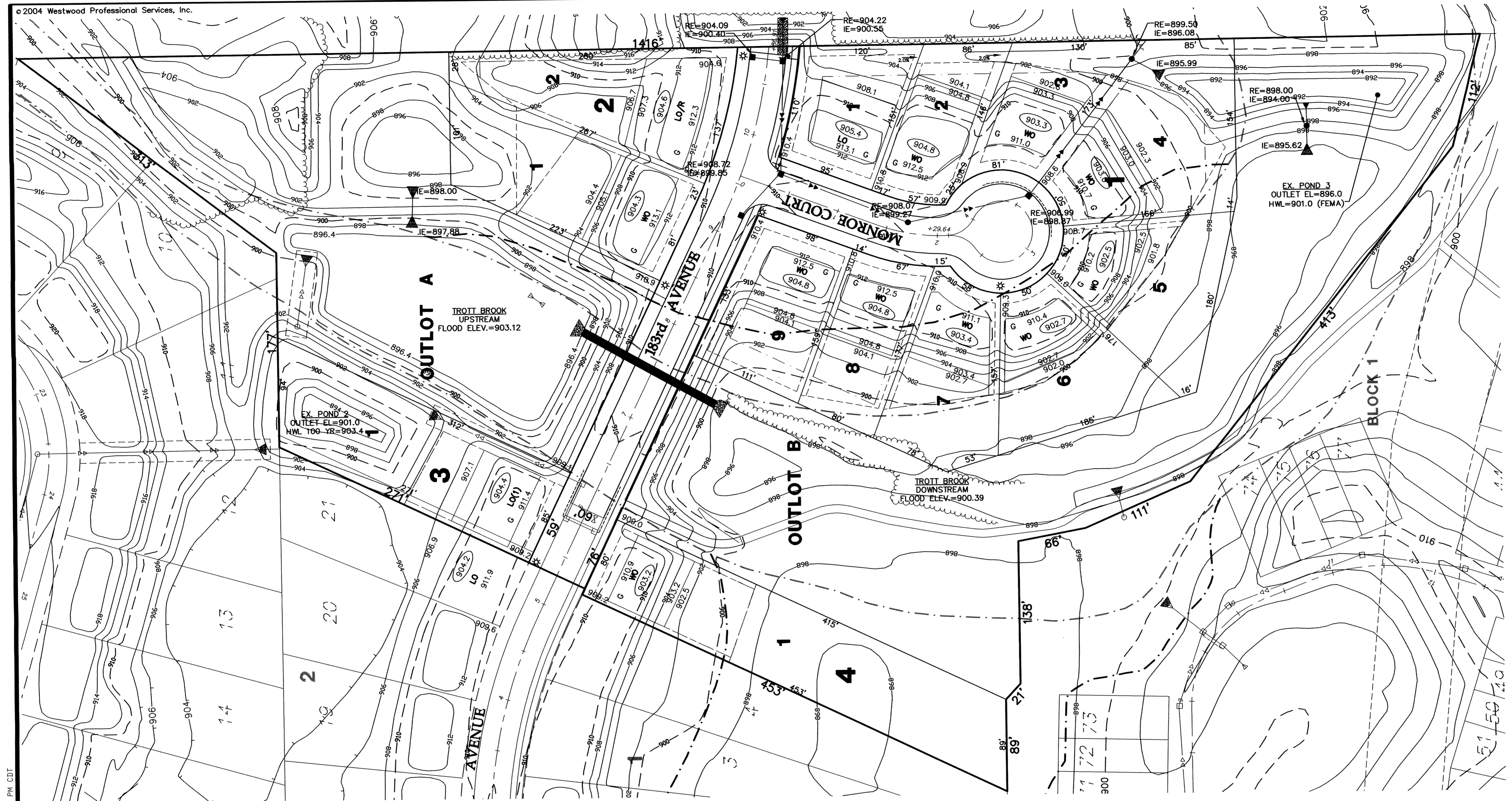


Call 48 Hours before digging:
GOPHER STATE ONE CALL
 Twin City Area 651-454-0002
 Mn. Toll Free 1-800-252-1166



Latest Revisions Date: 03/13/07
 E-3 20041210DEV02.DWG
 Date: 01/18/04 Sheet: 2 OF 2

**Trott Brook Farms
 12th Addition**
 Elk River, Minnesota

Development Plan

P:\20041210\dwg\20041210DEV02.dwg 3/13/2007 1:48:54 PM CDT

Westwood Professional Services, Inc.
 7599 Anagram Drive
 Eden Prairie, MN 55344
 Phone: 952/937-5150 Fax: 952/937-5822

I hereby certify that this plan was prepared by me or under my direct supervision and that I am a duly licensed PROFESSIONAL ENGINEER under the laws of the State of Minnesota.
Jason M. McCarty
 Date: 03/13/07 License No. 41955

Revisions:
 03/13/07 CITY COMMENTS (CL)

Designed: FDR/JMM
 Checked: JMM
 Drawn: CLJ
 Record Drawing by/date:

Prepared for:

D.R. Horton, Inc.
 20860 Kenbridge Court, Suite 100
 Lakeville, Minnesota 55044