

1. I hereby certify that this plan was prepared by me or under my direct supervision and that I am a duly licensed PROFESSIONAL ENGINEER under the laws of the State of Minnesota.
Jason M. McCarthy
 License No. 41955
 Date: 11/29/04

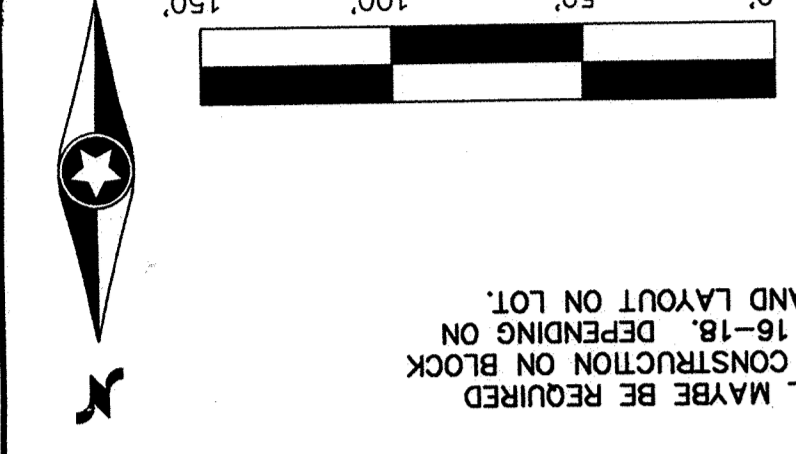
Revisions:	11/29/04 CITY COMMENTS (SH)
Prepared for:	DR. HORTON, INC.
Checked:	JMH
Drawn:	CLJ
Record Drawing by/Date:	

DR. Horton, Inc.
 20860 Kenbridge Court, Suite 100
 Lakeville, Minnesota 55044

Trott Brook Farms
10th Addition
 Elk River, Minnesota

Development Plan

Date: 11/04/04 Sheet: 2 OF 2
 Latest Revisions Date: 11/29/04
 E-3 20041126DEV02.DWG

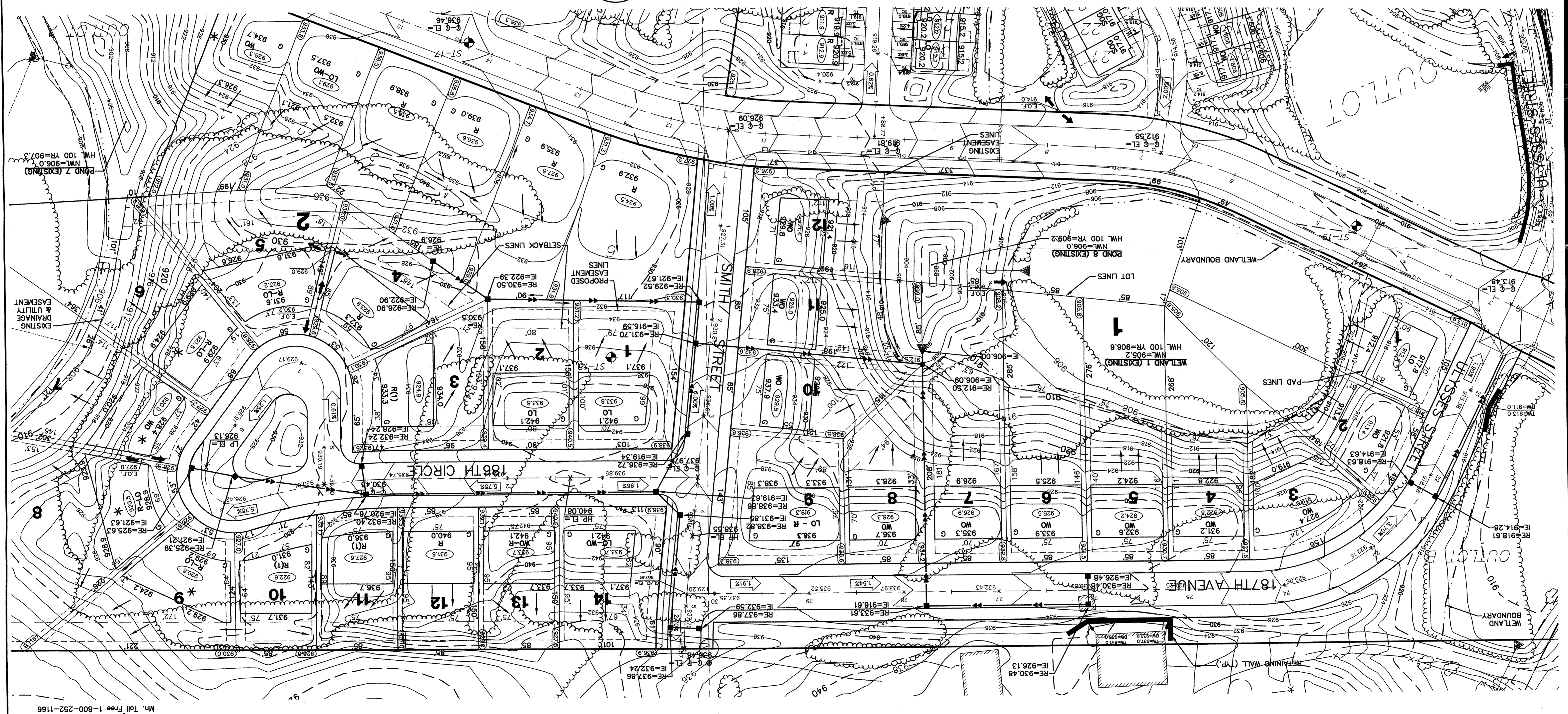
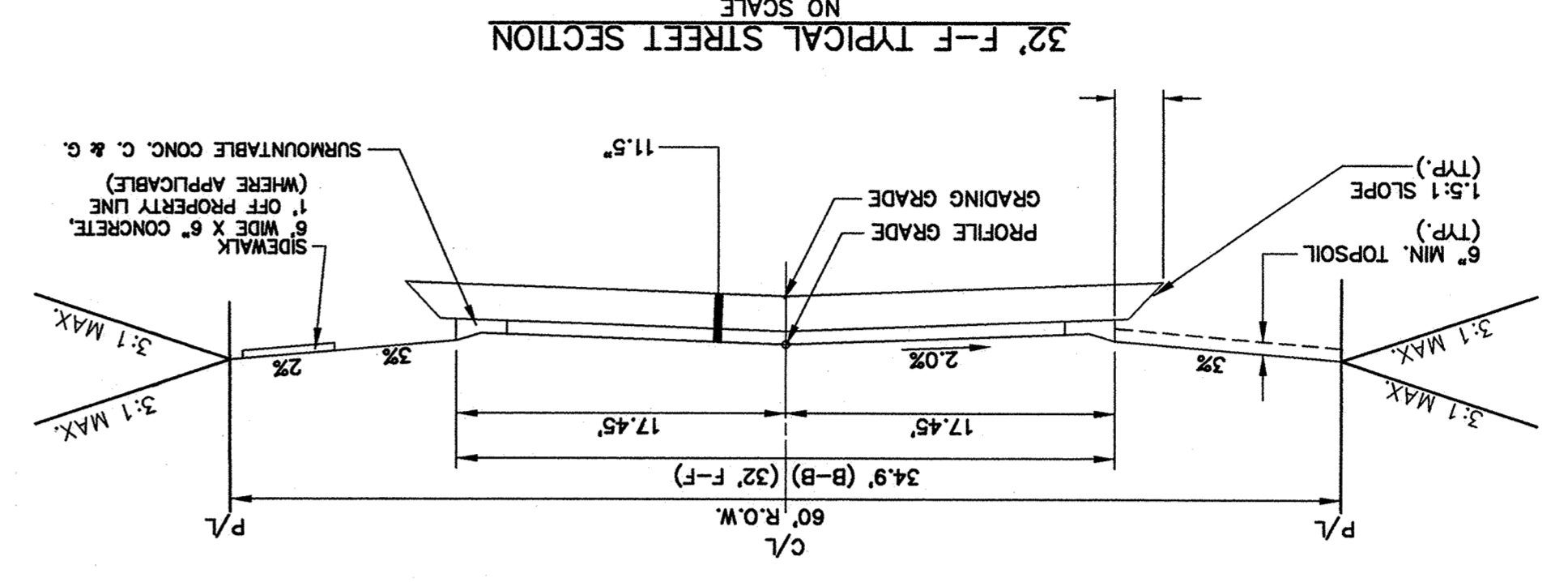


* DURING HOUSE CONSTRUCTION ON BLOCK 2 LOTS 4 AND 16-18, DEPENDING ON HOUSE STYLE AND LAYOUT ON LOT. RETAINING WALL MAYBE BE REQUIRED

*Approved
 12/10/04
 J. Anderson*

TYPICAL STREET SECTION
 NOT TO SCALE

1-1/2" MNDOT 2350 TYPE MWVE 4503C PLANT MIXED BITUMINOUS WEARING COURSE
 TACK COAT, MNDOT 2357
 2" MNDOT 2350 TYPE LVMW3030C PLANT MIXED BITUMINOUS BASE COURSE
 8" GRAVEL BASE CLASS 5 (100% CRUSHED, RECYCLED)
 SUBGRADE PREPARATION, APPROVED BY THE ENGINEER



Call 48 Hours before digging.
Gopher State One Call
 Twn City Area 651-454-0002
 Mn. Toll Free 1-800-252-1166