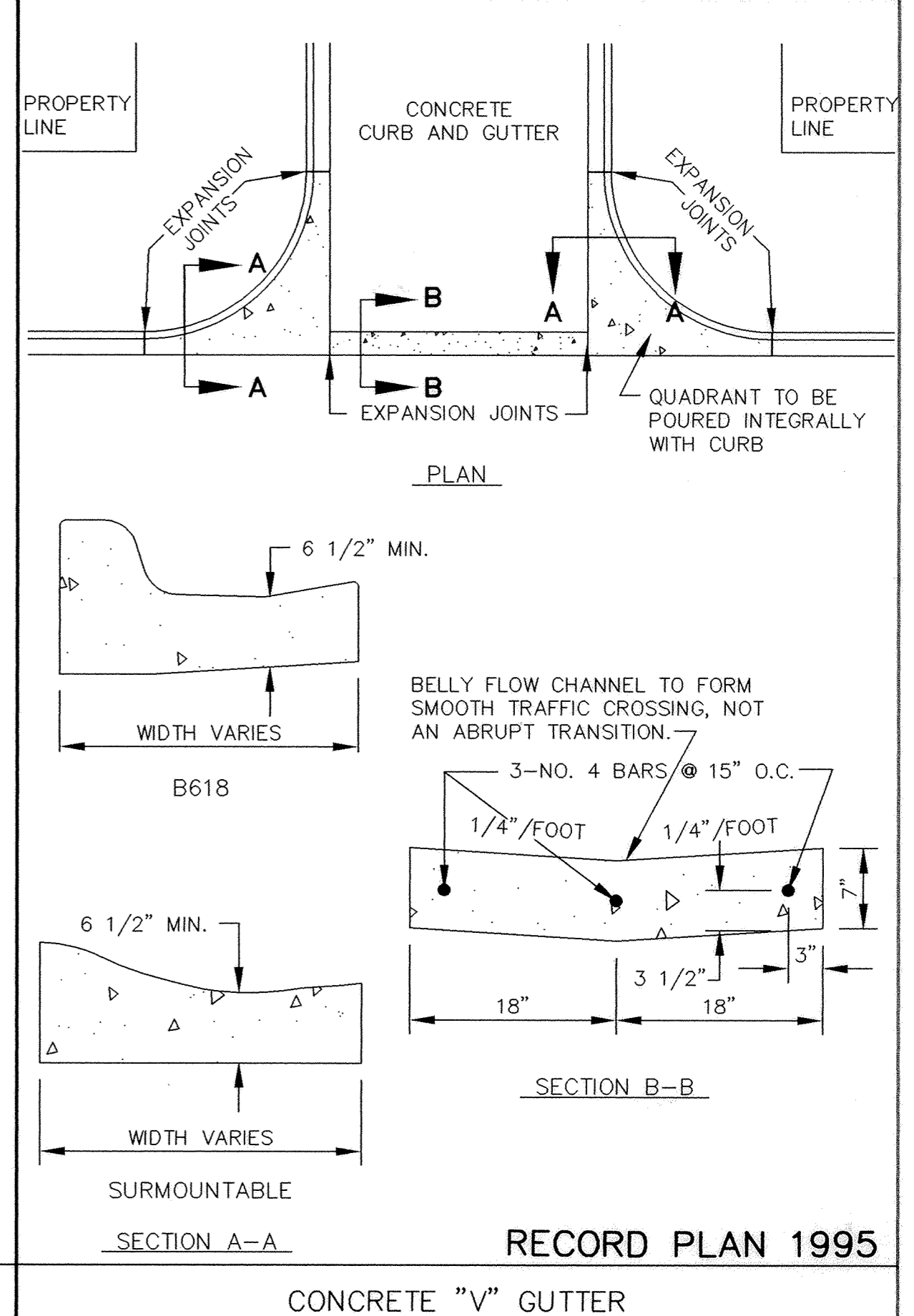
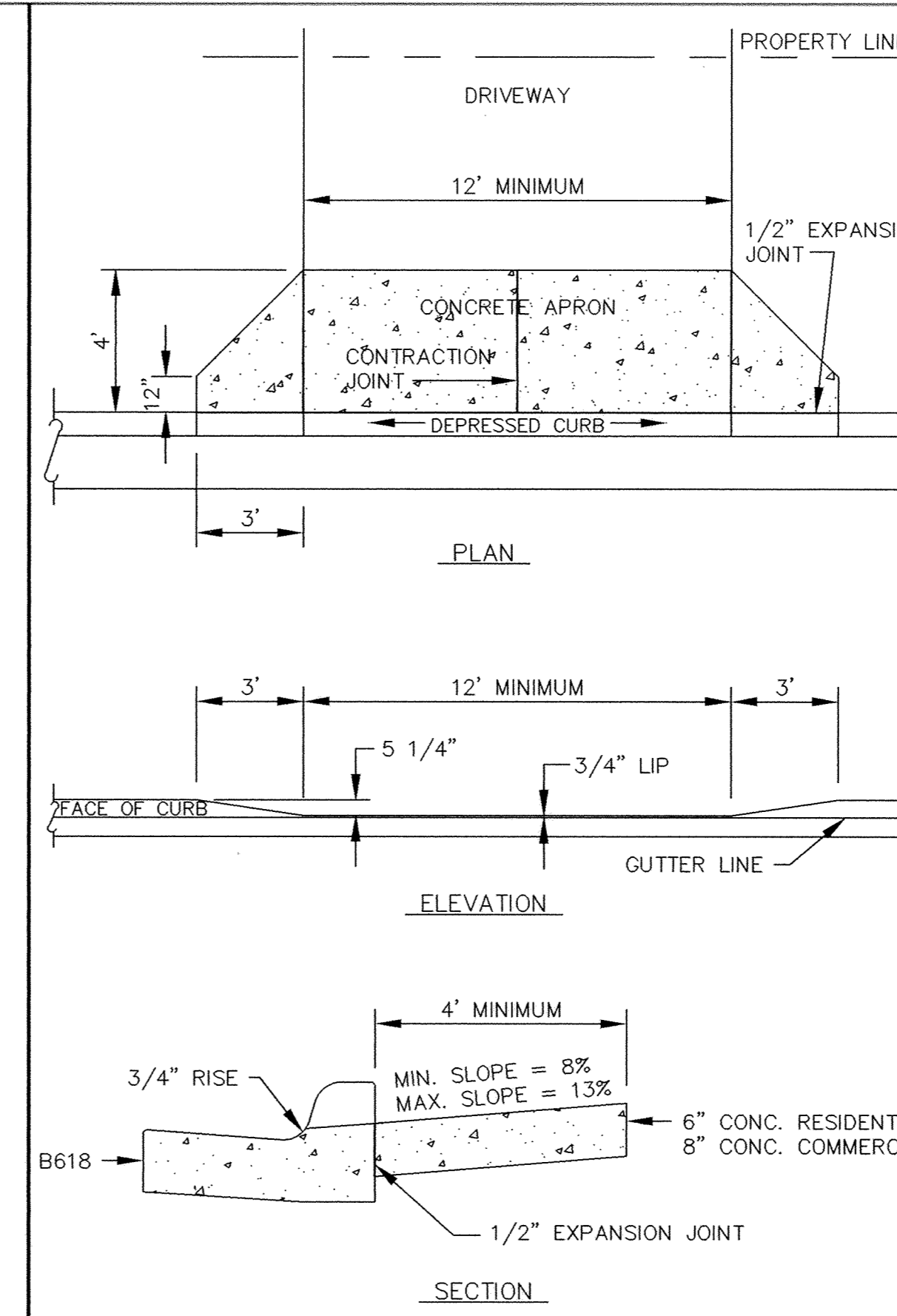


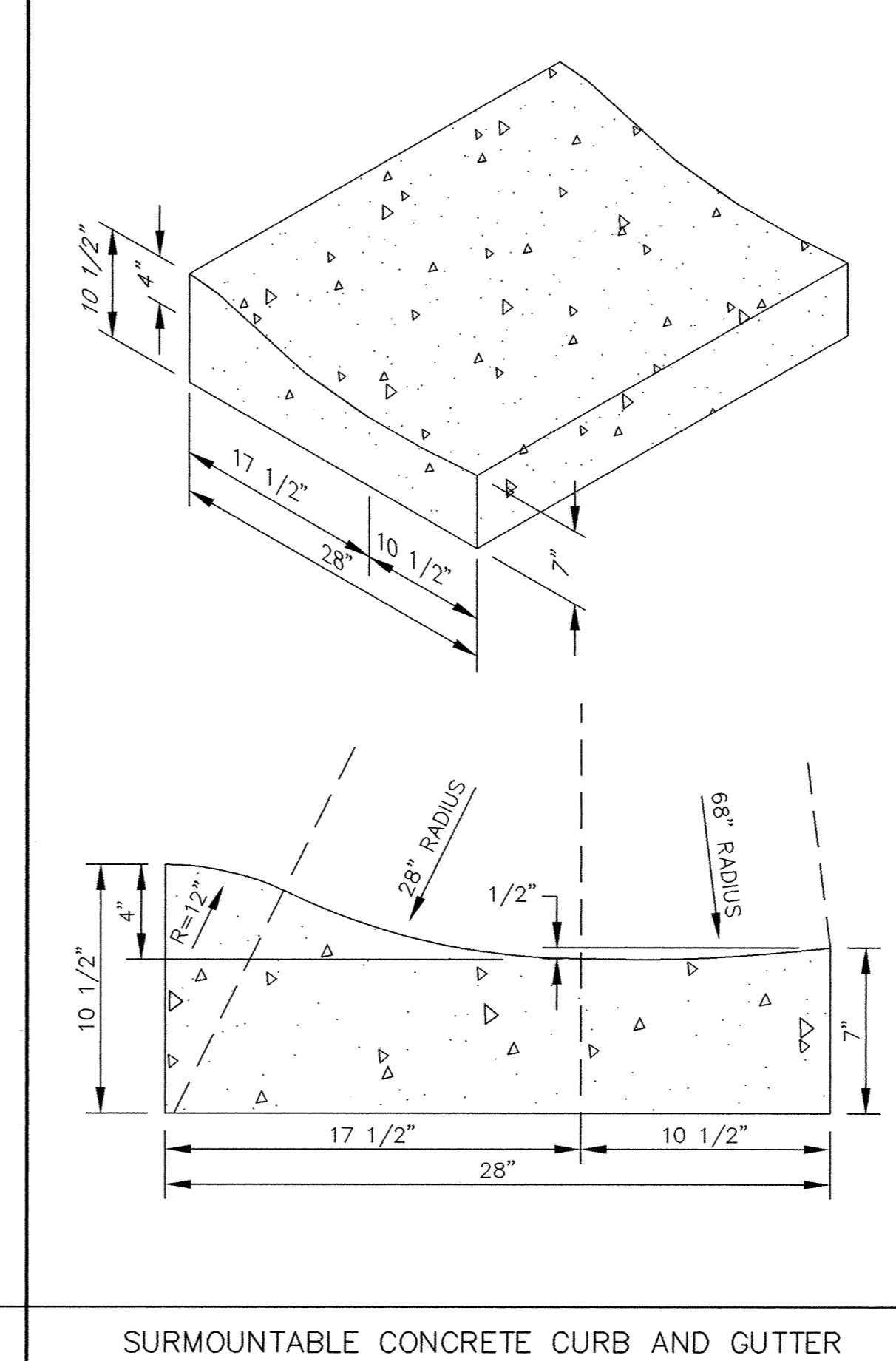
CONCRETE CURB AND GUTTER B618



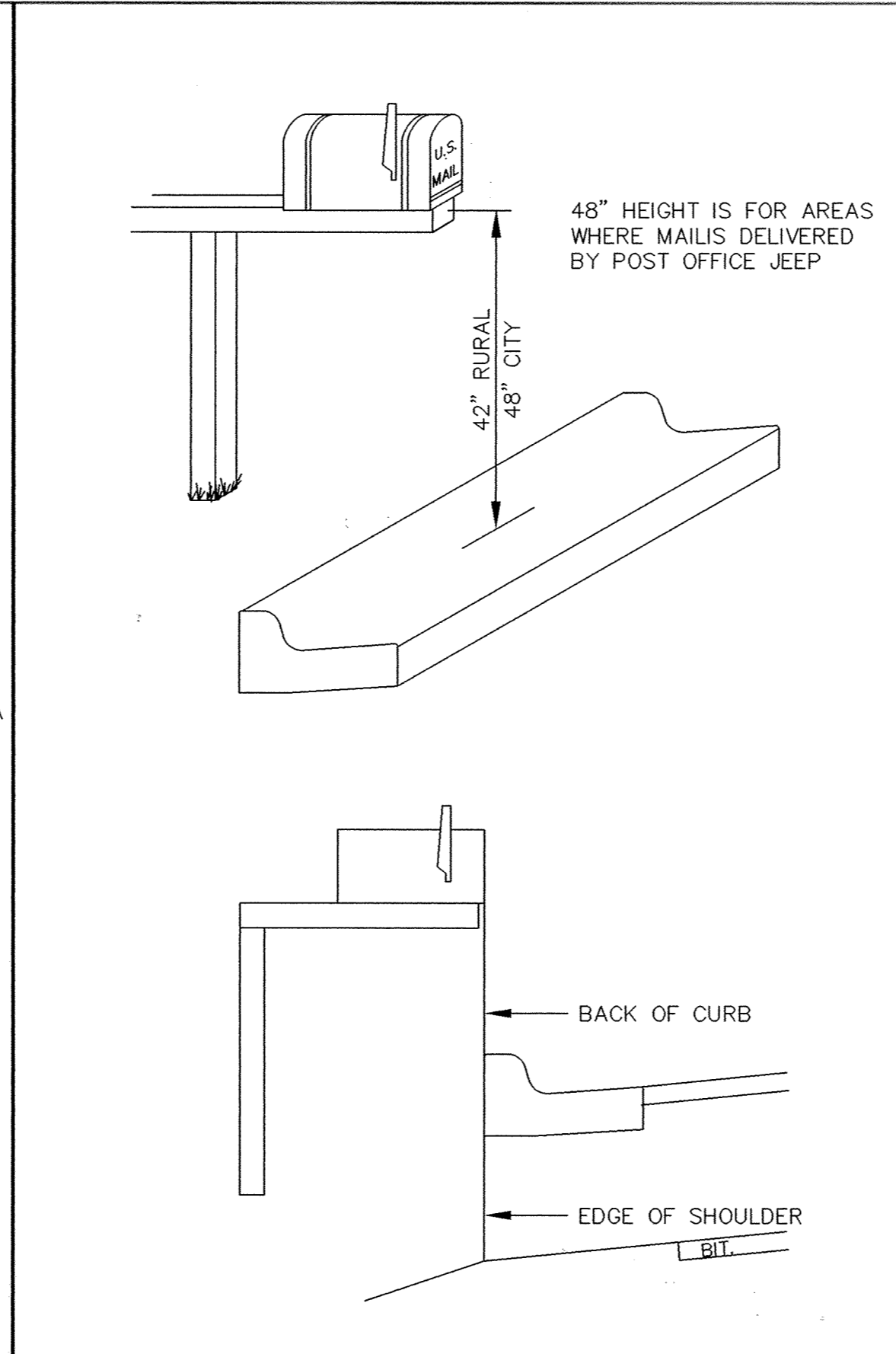
CONCRETE "V" GUTTER



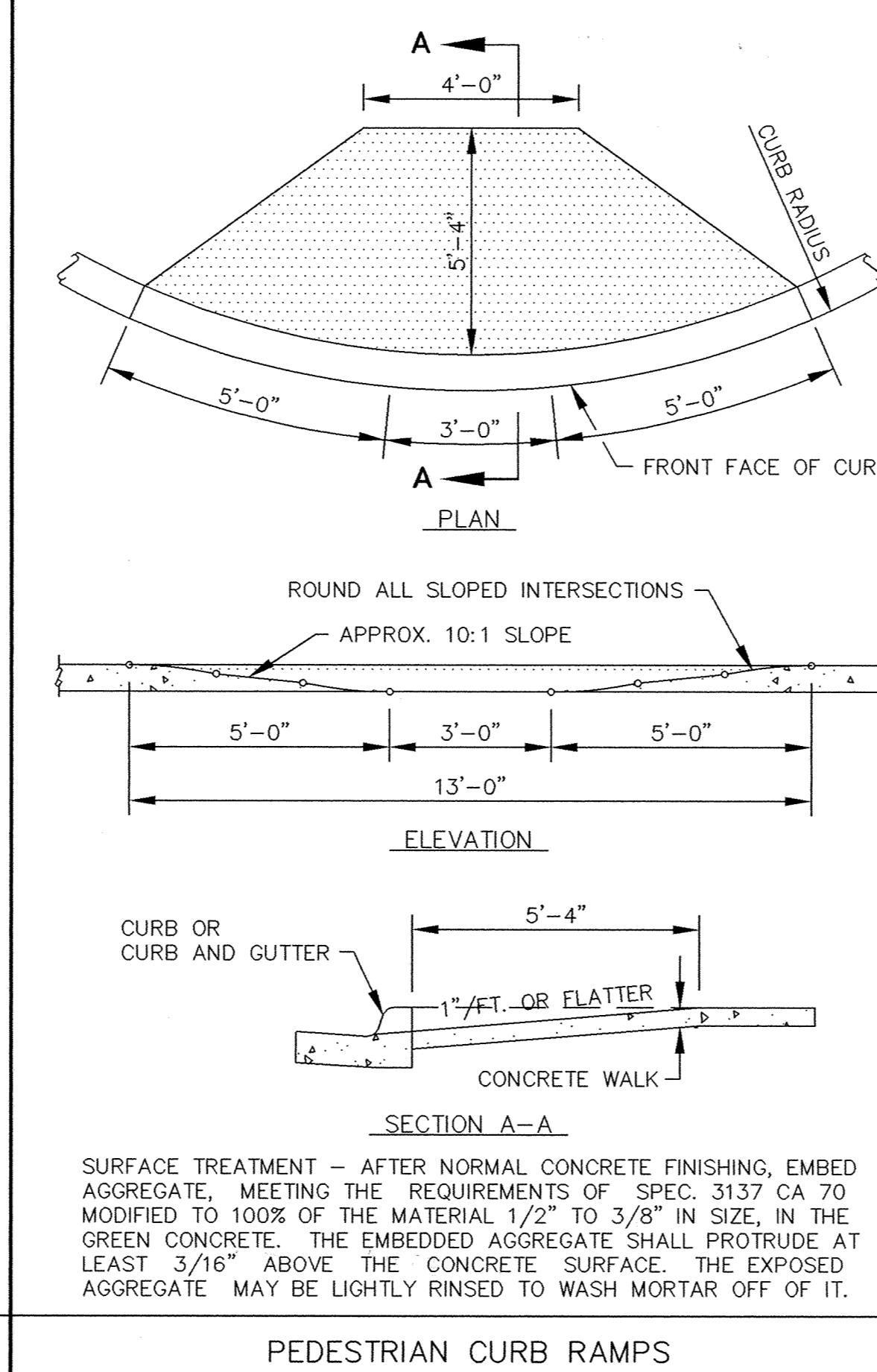
DEPRESSED CURB WITH DRIVEWAY APRON



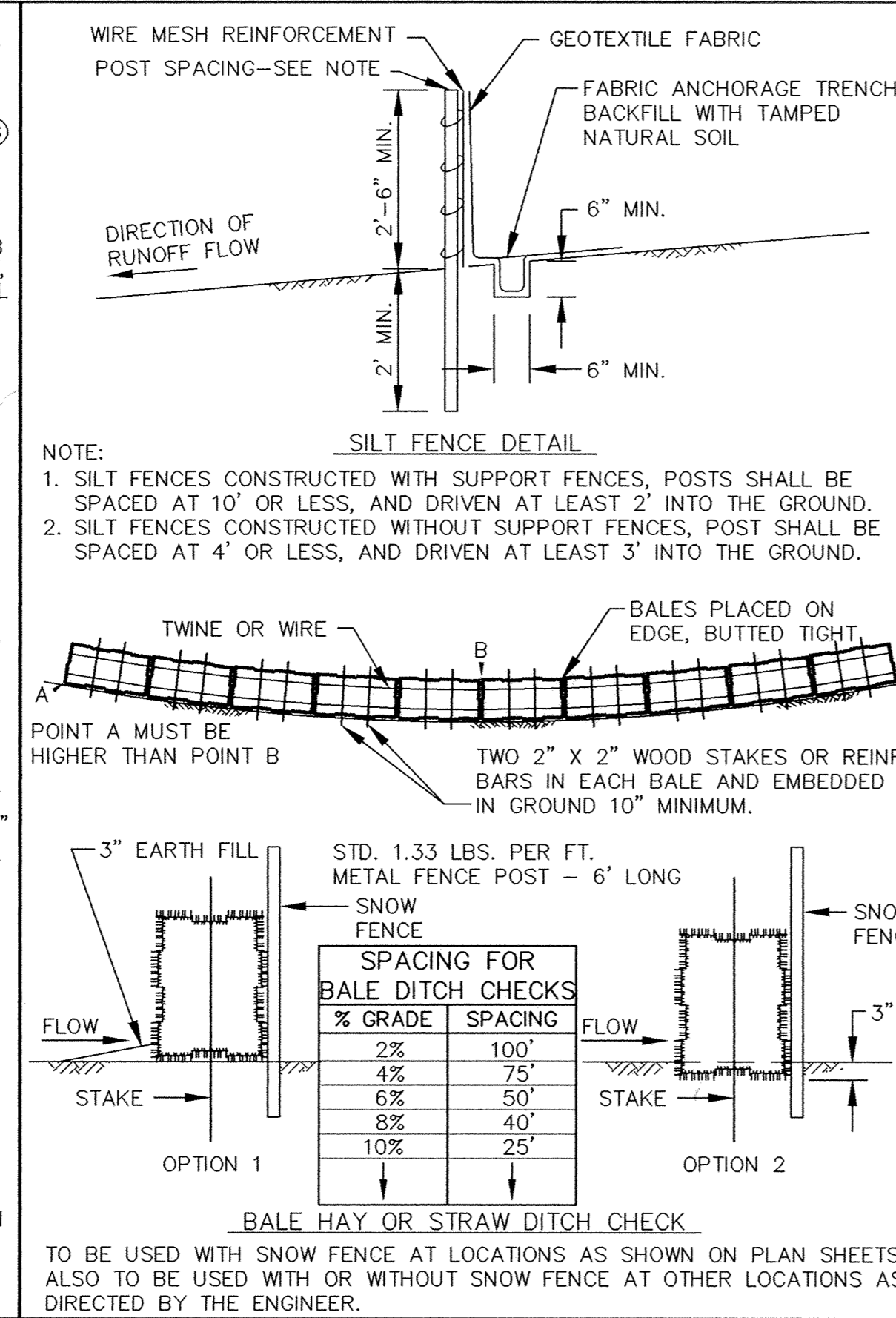
SURMOUNTABLE CONCRETE CURB AND GUTTER



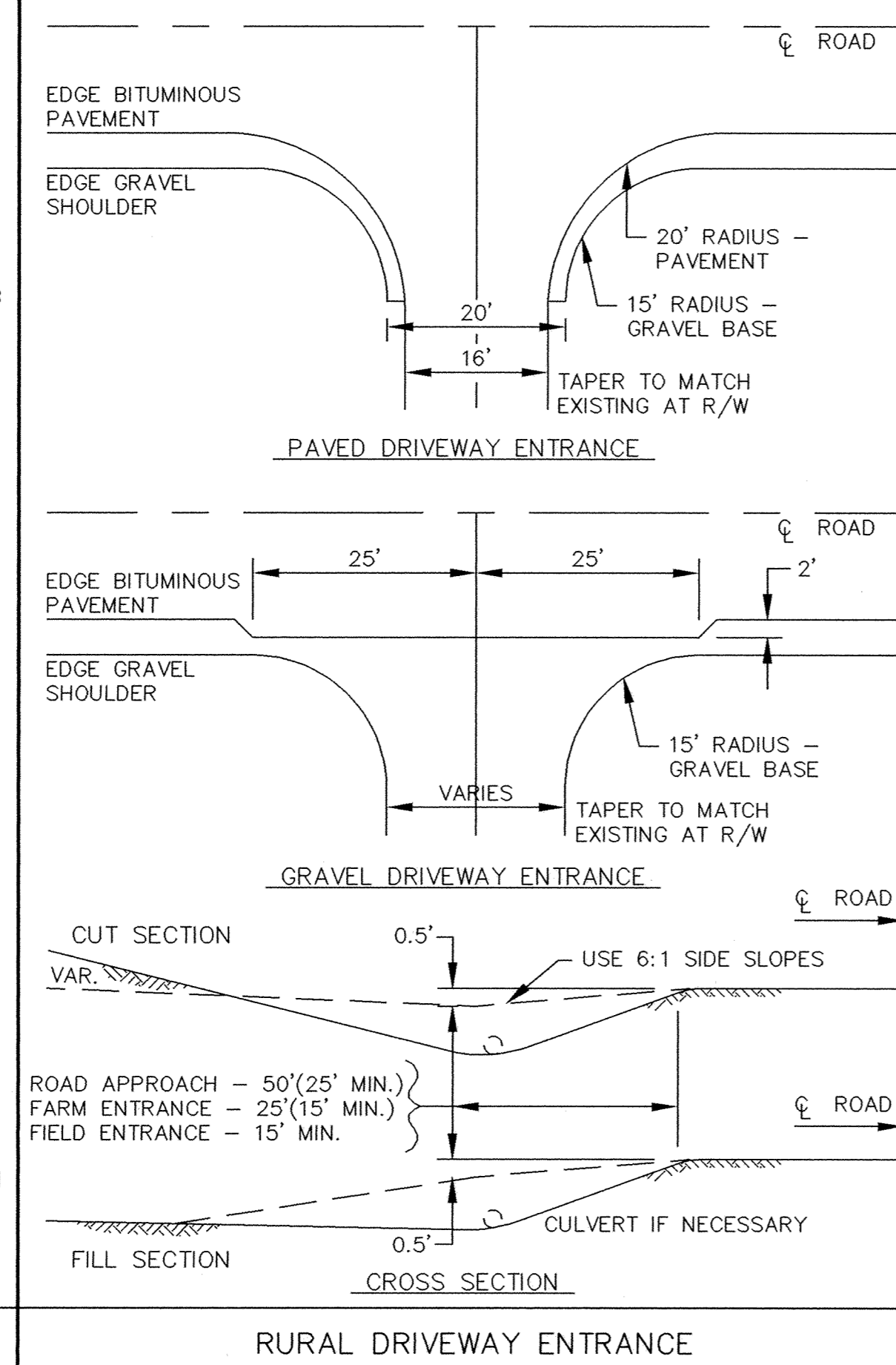
MAIL BOX



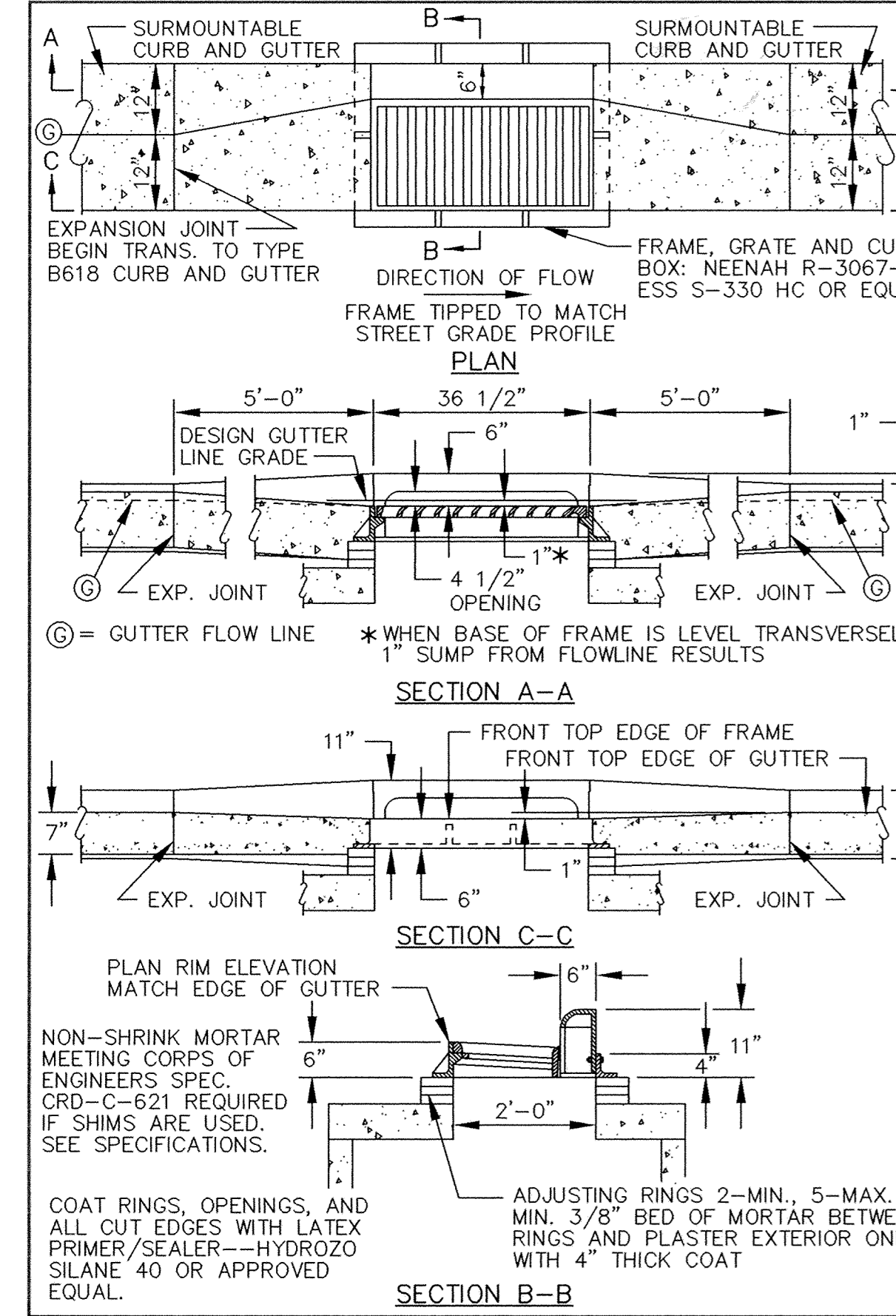
PEDESTRIAN CURB RAMPS



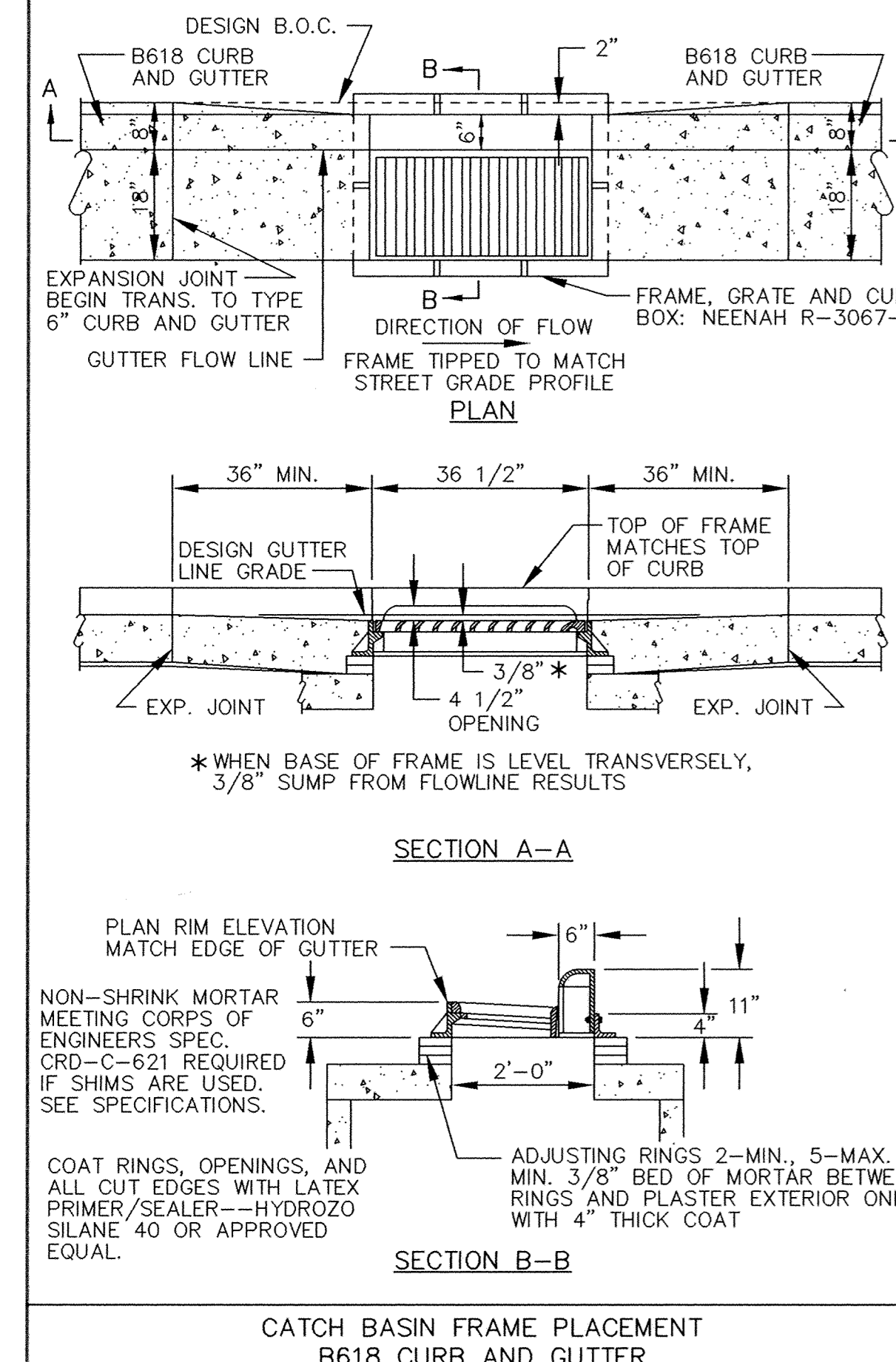
EROSION CONTROL DETAIL



RURAL DRIVEWAY ENTRANCE



CATCH BASIN FRAME PLACEMENT B618 CURB AND GUTTER



CATCH BASIN FRAME PLACEMENT B618 CURB AND GUTTER

I HEREBY CERTIFY THAT THIS PLAN, SPECIFICATION, OR REPORT WAS PREPARED BY ME OR UNDER MY DIRECT SUPERVISION AND THAT I AM A DULY REGISTERED PROFESSIONAL ENGINEER UNDER THE LAWS OF THE STATE OF MINNESOTA.

*Paul Baith*  
DATE 4-29-94 REG. NO. 13929

**MSA**  
CONSULTING ENGINEERS

1326 ENERGY PARK DRIVE  
ST. PAUL, MINNESOTA 55108  
(612) 644-4389

9800 SHELARD PARKWAY  
MINNEAPOLIS, MINNESOTA 55441  
(612) 546-0432

REVISIONS	DATE	DESCRIPTION	DESIGNED	CHECKED	DRAWN

GRAPHIC SCALE  
0 HORIZ. N/A  
0 VERT.

CITY OF ELK RIVER  
SCHOOL STREET, JACKSON AVENUE, FREEPORT AVENUE,  
TURN LANES, U.S. HWY NO. 10 AND U.S. HWY NO. 169  
STREET CONSTRUCTION DETAILS

DATE APRIL 1994 SHEET 74 OF 74 SHEETS PROJECT NO. 230-216