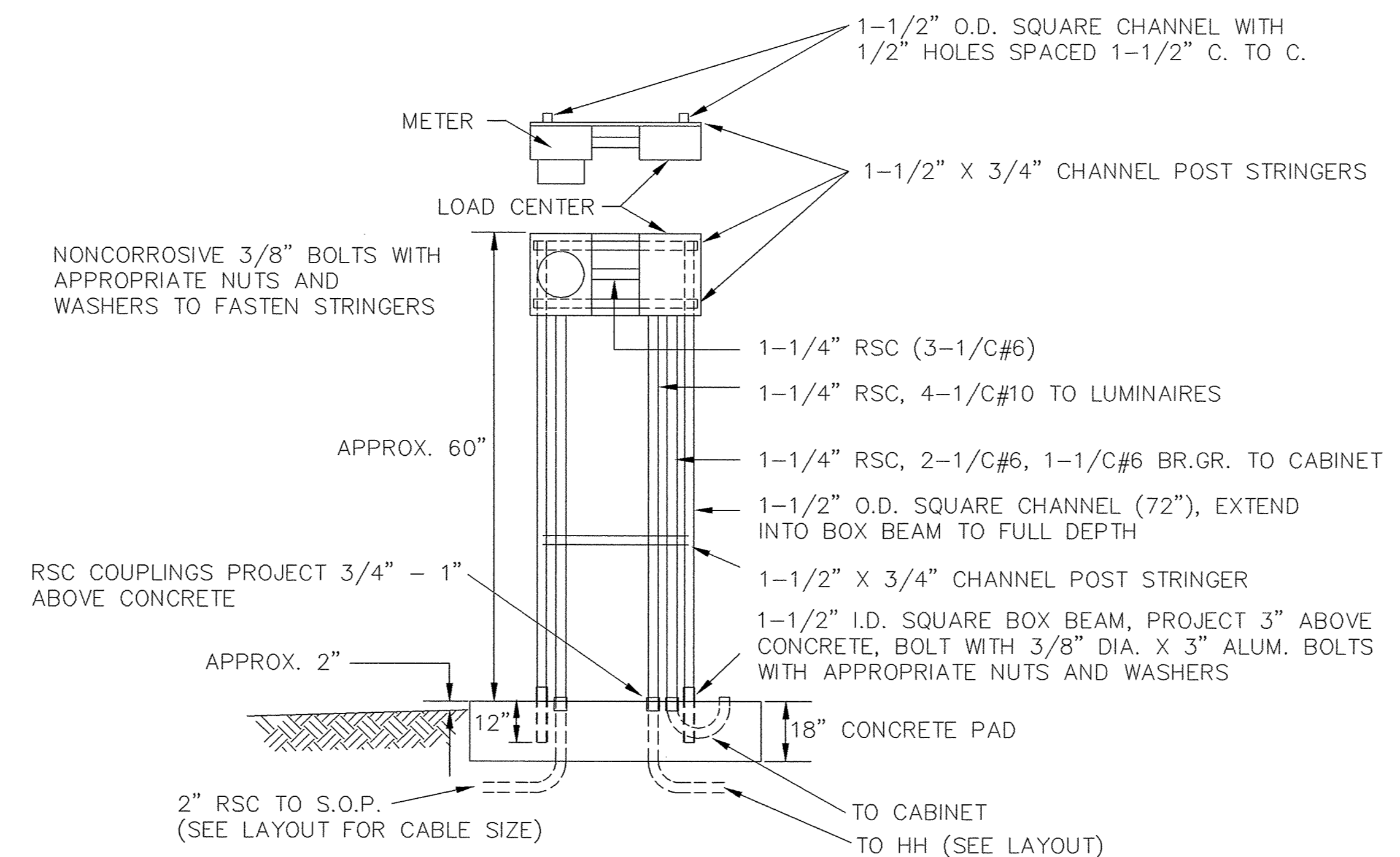
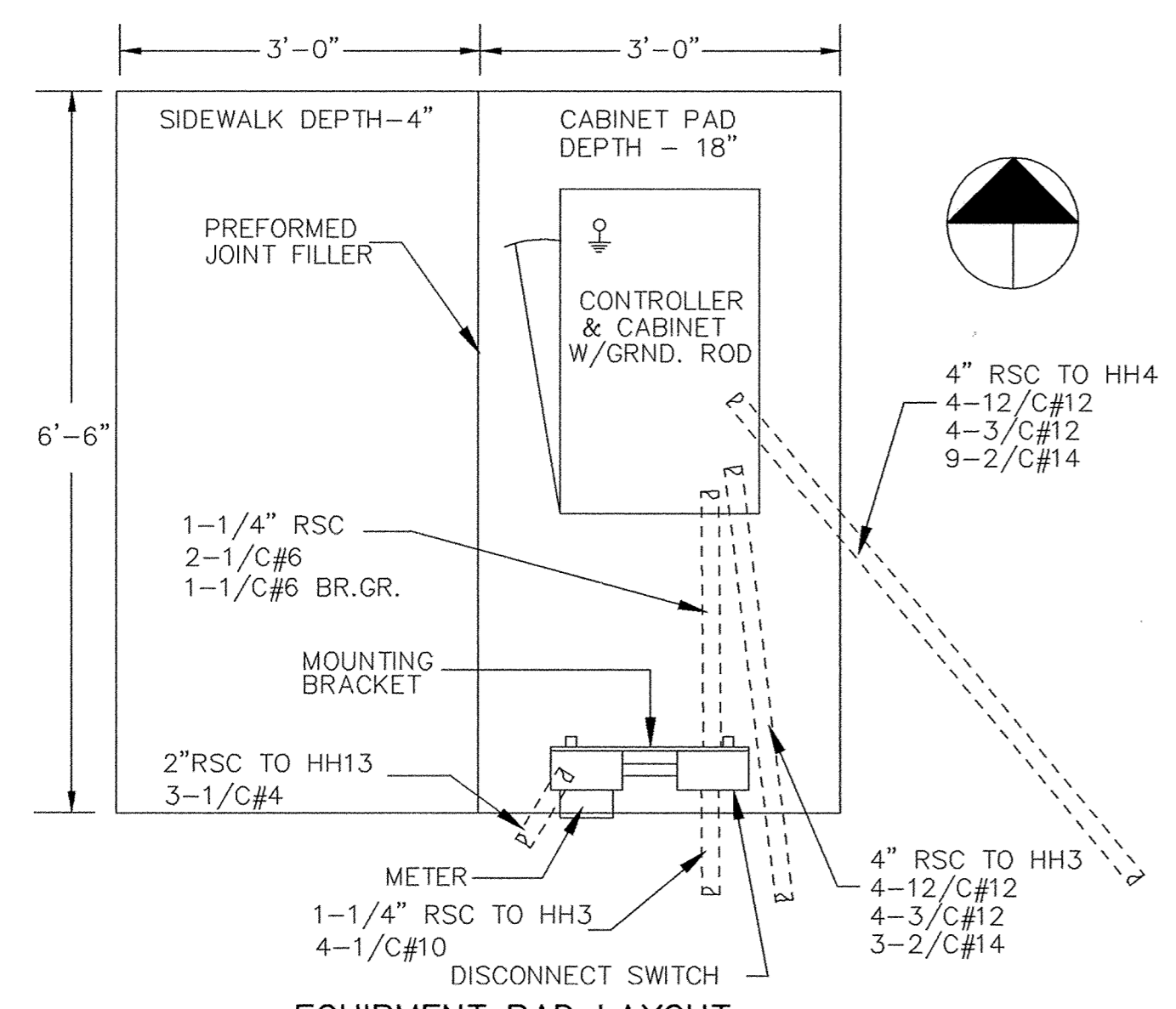
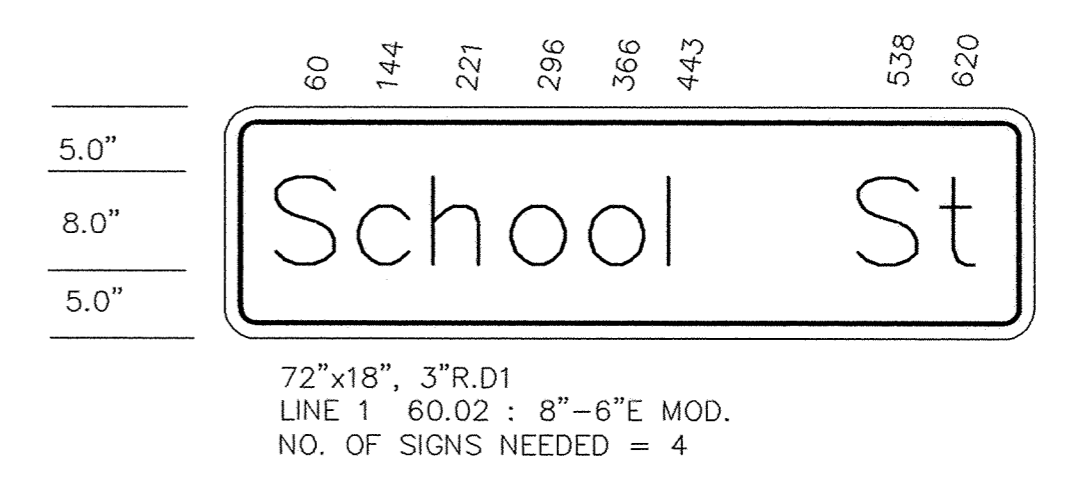


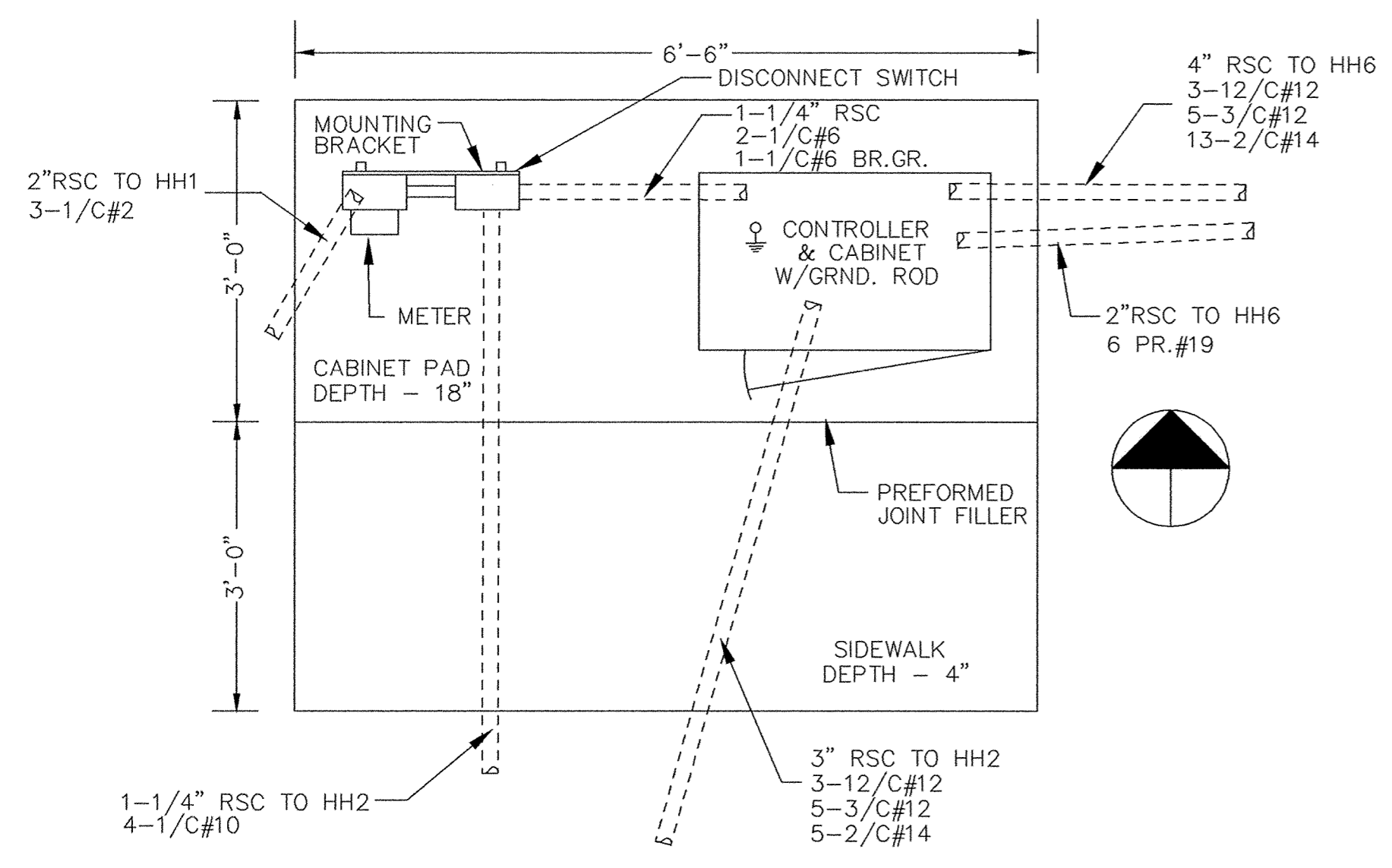
SAICO PRODUCTS • NEW HOPE, MINNESOTA
REORDER BY PART NUMBER 6592
SAICO PRODUCTS • NEW HOPE, MINNESOTA
REORDER BY PART NUMBER 6592
SAICO PRODUCTS • NEW HOPE, MINNESOTA
REORDER BY PART NUMBER 6592
SAICO PRODUCTS • NEW HOPE, MINNESOTA
REORDER BY PART NUMBER 6592



MAST ARM SIGN DETAILS

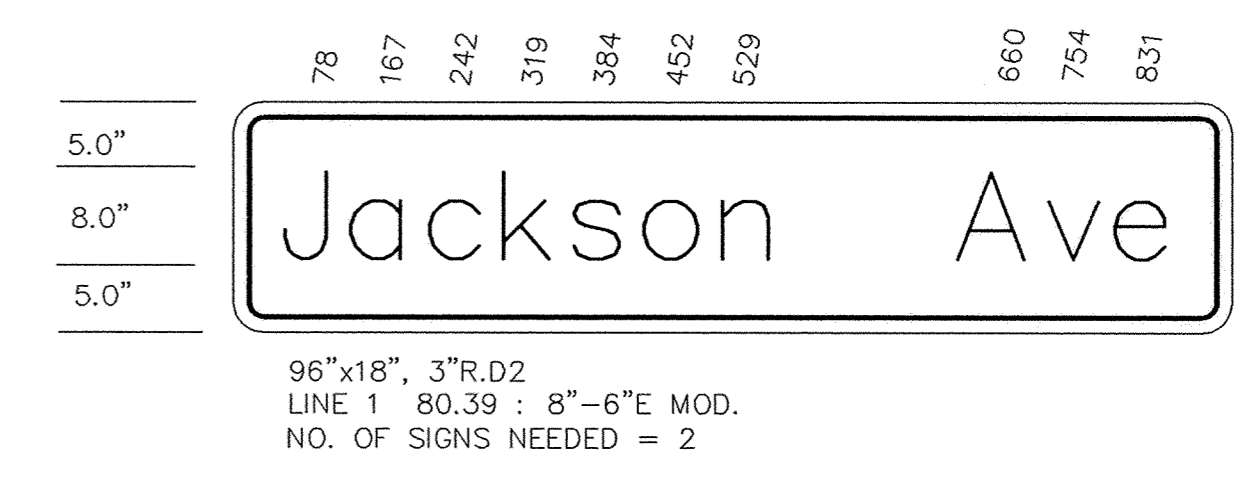


D1 (72"x18")

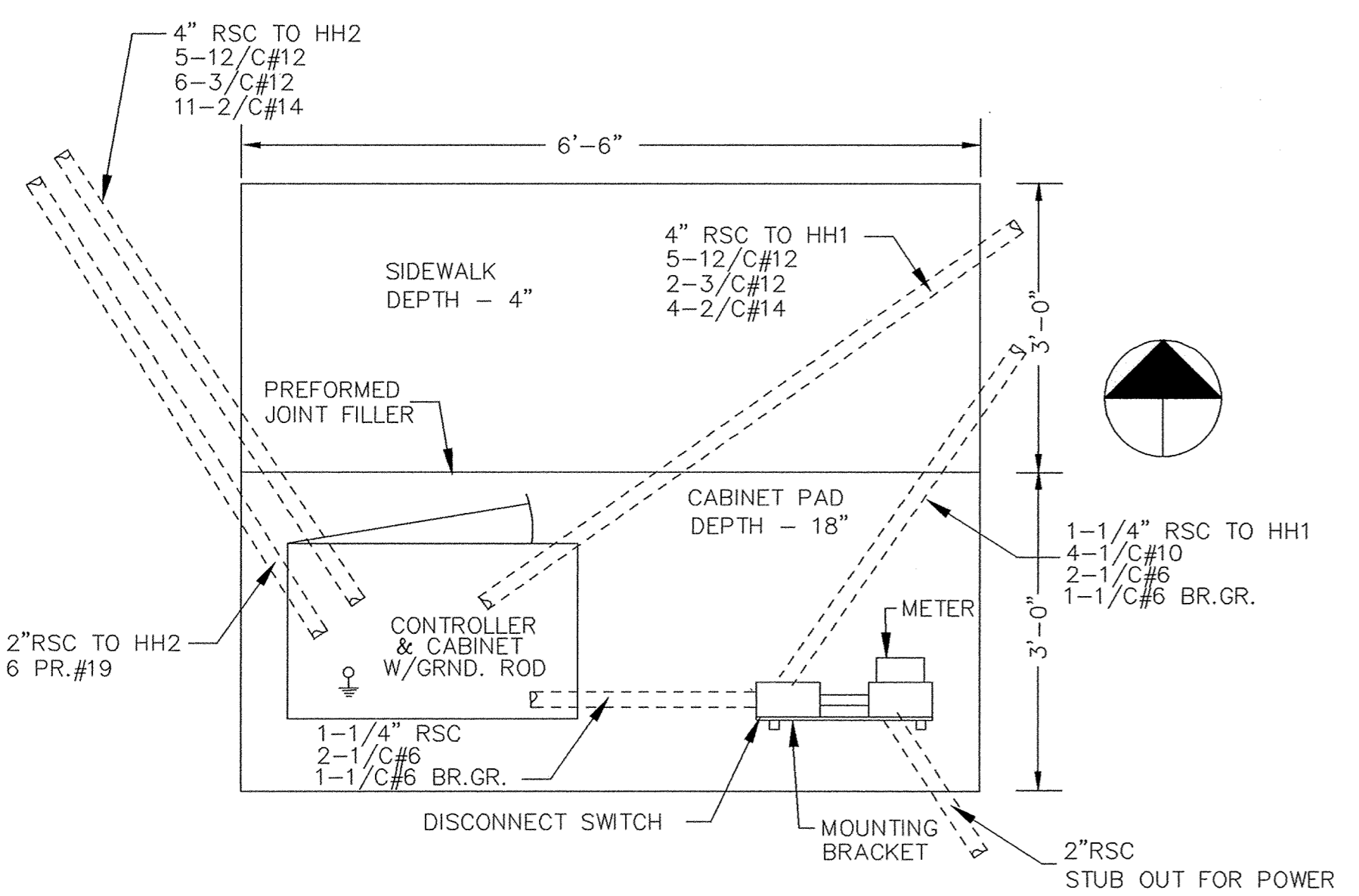


MOUNTING BRACKET, PAD MOUNTED SERVICE EQUIPMENT SYSTEMS "A", "B" AND "C"

APPLICABLE STANDARD PLATES	
8110C	TRAFFIC SIGNAL BRACKETING—POLE MOUNTED
8111B	TRAFFIC SIGNAL BRACKETING—PEDESTAL MOUNTED
8112C	PEDESTAL FOUNDATION
8115C	PEDESTRIAN PUSHBUTTON INSTALLATION
8117F	PRECAST CONCRETE HANDHOLE (OR PULLBOX)
8119C	GROUND MOUNTED CABINET FOUNDATION
8120J	PA85 & PA90 POLE FOUNDATION
8121C	TRANSFORMER BASE AND POLE BASE PLATE
8122C	PEDESTAL AND PEDESTAL BASE
8123C	POLE AND MAST ARM
8124D	MAST ARM SIGNAL HEAD MOUNTS
8126E	PA100 POLE FOUNDATION
8130D	SAW CUT LOOP DETECTORS

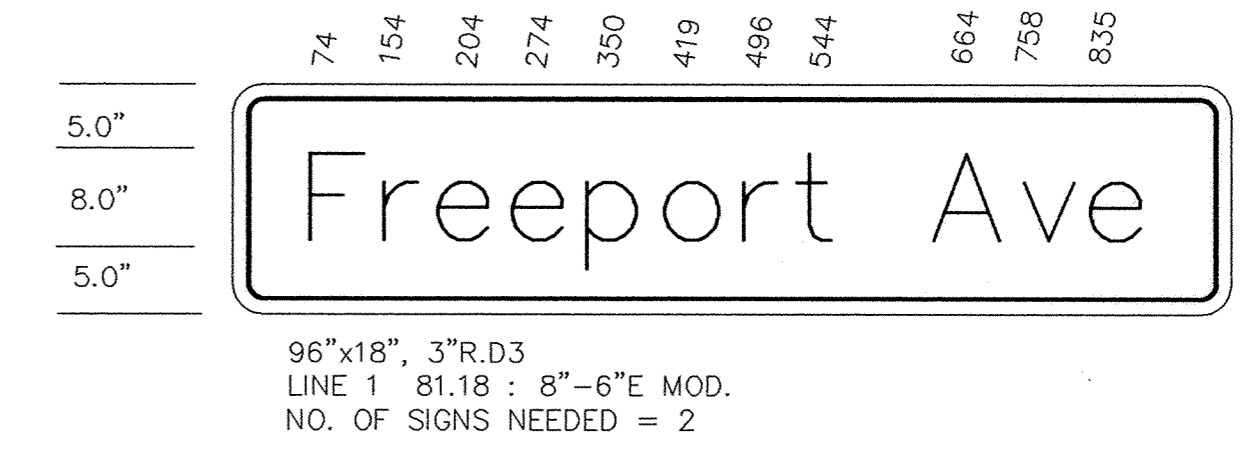


D2 (96"x18")



EQUIPMENT PAD LAYOUT NOTES

- ANCHOR RODS, NUTS AND WASHERS FOR CABINET TO BE FURNISHED BY Mn/DOT AND INSTALLED BY THE CONTRACTOR.
- UPPER PART OF FOUNDATION SHALL BE BEVELED OR CHAMFERED IN A NEAT MANNER AS DIRECTED BY THE ENGINEER IN THE FIELD.
- TOP OF CONDUITS SHALL BE THREADED AND CAPPED AFTER INSTALLATION (UNTIL CABLES ARE INSTALLED). THEY SHALL PROJECT A MINIMUM OF 2" ABOVE THE CONCRETE AND SHALL BE LOCATED INSIDE THE CABINET WHERE DIRECTED BY THE ENGINEER BUT SHALL NOT INTERFERE WITH CABINET FUNCTIONS OR SUPPORTING MEMBERS.
- CONCRETE MIX 3A32 OR EQUAL SHALL BE USED FOR FOUNDATION AND CONCRETE WALK.
- CONDUITS WHICH HAVE BOTH ENDS TERMINATING WITHIN THE PAD SHALL NOT BE INSTALLED BELOW THE CONCRETE.
- EXACT LOCATION OF THE CONDUIT WITHIN THE PAD AND THE CABINET AND SERVICE EQUIPMENT SHALL BE AS DETERMINED BY THE ENGINEER IN THE FIELD.



D3 (96"x18")

RECORD PLAN 1995

I HEREBY CERTIFY THAT THIS PLAN, SPECIFICATION, OR REPORT WAS PREPARED BY ME OR UNDER MY DIRECT SUPERVISION AND THAT I AM A DULY REGISTERED PROFESSIONAL ENGINEER UNDER THE LAWS OF THE STATE OF MINNESOTA. <i>George M. Stumpfer</i> DATE 4/19/94 REG. NO. 21849		1326 ENERGY PARK DRIVE ST. PAUL, MINNESOTA 55108 (612) 644-4389 9800 SHELARD PARKWAY MINNEAPOLIS, MINNESOTA 55441 (612) 546-0432	DATE	DESCRIPTION	DESIGNED GMS	CITY OF ELK RIVER SIGNALIZATION INTERSECTION DETAILS S.A.P. 204-107-04/204-104-04MTB	DATE APRIL 1994	SHEET 71 OF 74 SHEETS	PROJECT NO. 230-216
			6-13-94	NDOT COMMENTS	CHECKED GMS				
			DRAWN	MRE	GRAPHIC SCALE				
			0	HORIZ. 20	0				
			0	VERT. 5	5				