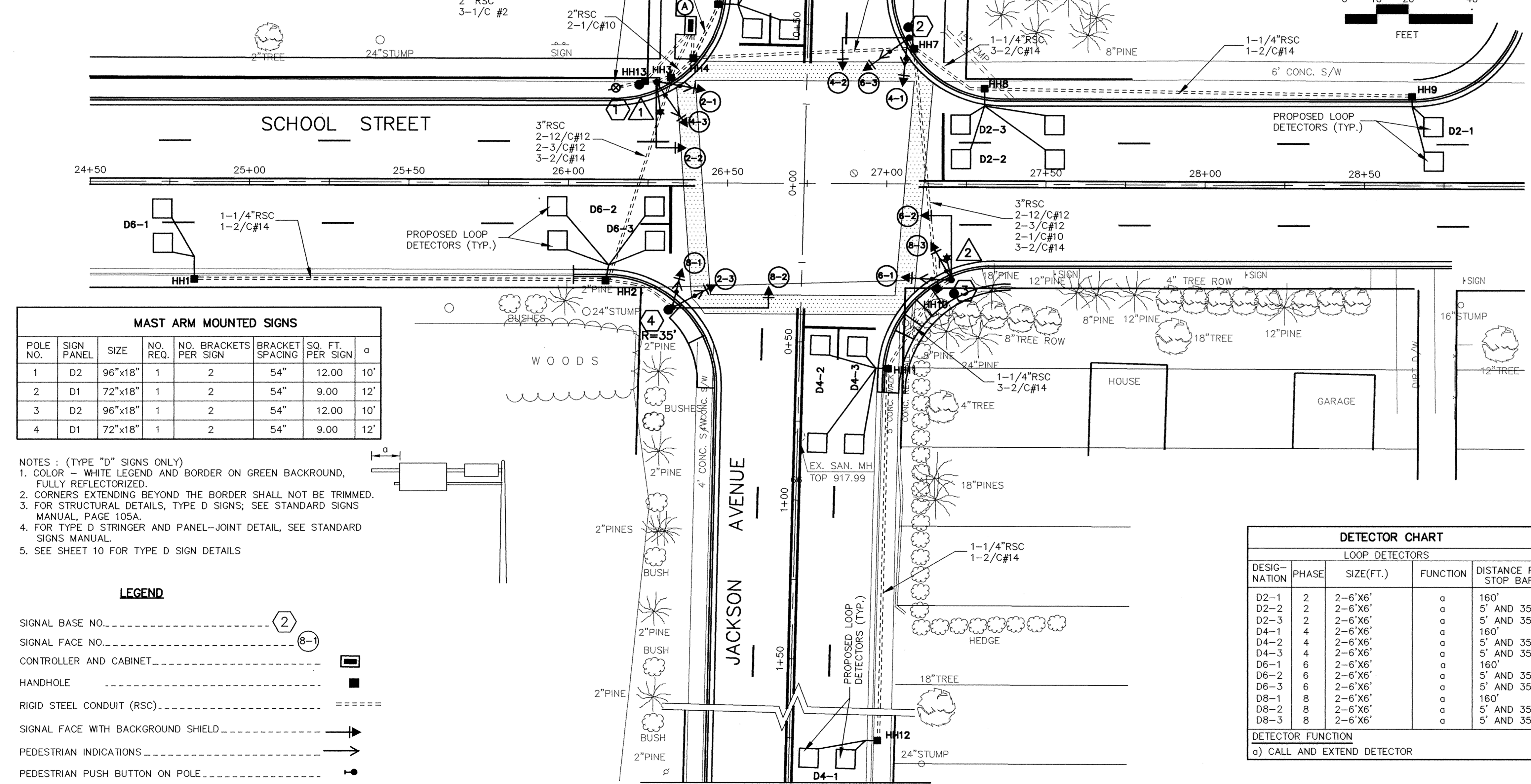
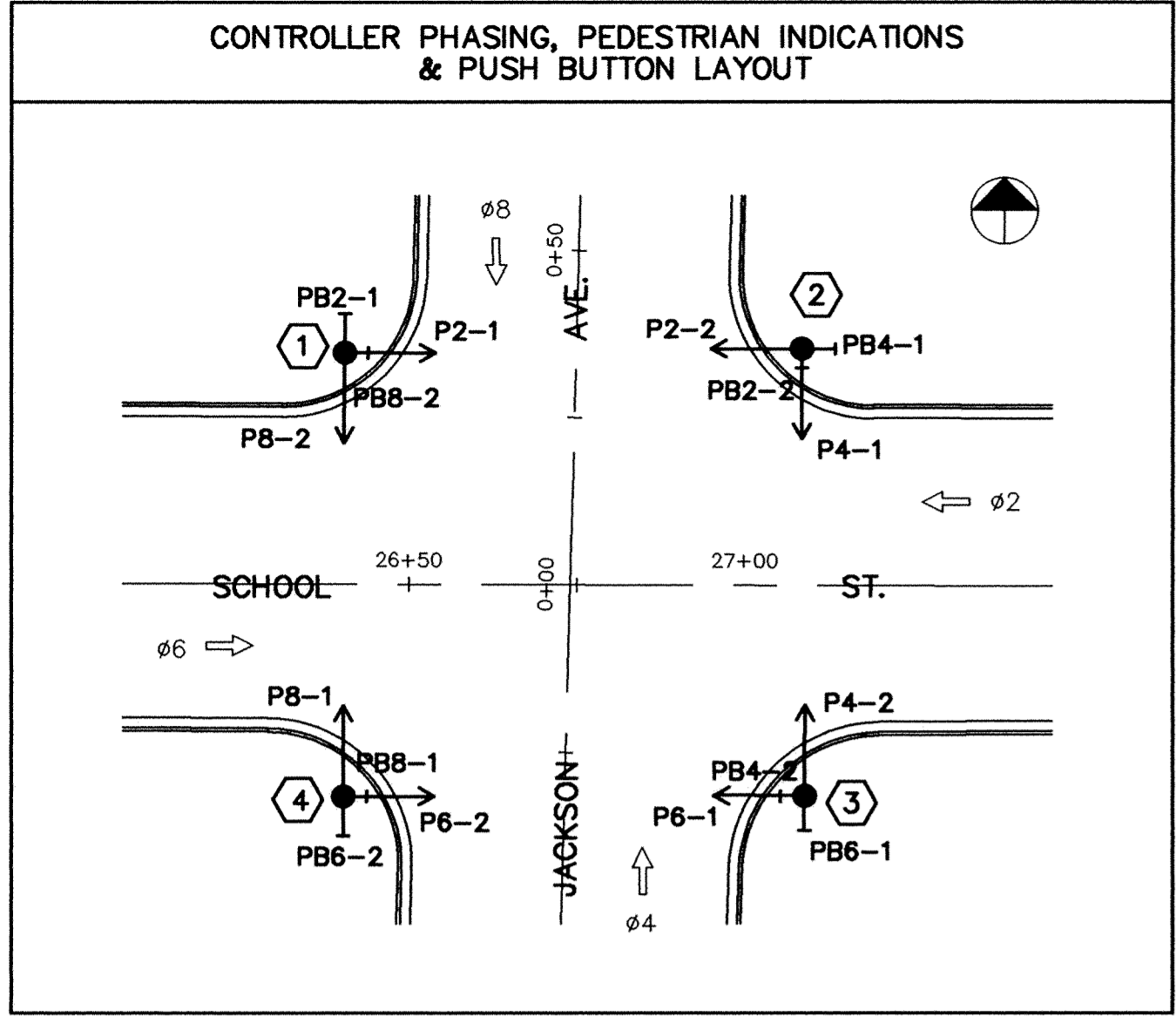


1	TYPE PA90-A-20-D30-9 1-ONE WAY SIGNAL (OVERHEAD), END MOUNTED 2-TYPE 10B-POLE MOUNTED AT 0° AND 270° LUMINAIRE AT 355-200 WATT HPS W/PEC/CH.SW. 2-PEDESTRIAN PUSH BUTTONS W/2-PEDESTRIAN INSTRUCTION SIGNS (R10-4C) EXTEND INTO HH#3 : 3"RSC 2-12/C#12 2-3/C#12 2-1/C#10 30.9'N 52.6'W
2	TYPE PA90-A-20 1-ONE WAY SIGNAL (OVERHEAD), END MOUNTED 2-TYPE 10B-POLE MOUNTED AT 0° AND 270° 2-PEDESTRIAN PUSH BUTTONS W/2-PEDESTRIAN INSTRUCTION SIGNS (R10-4C) EXTEND INTO HH#7 : 3"RSC 2-12/C#12 2-3/C#12 49.3'N 31.4'E
3	TYPE PA90-A-20-D30-9 1-ONE WAY SIGNAL (OVERHEAD), END MOUNTED 2-TYPE 10B-POLE MOUNTED AT 0° AND 270° LUMINAIRE AT 355-200 WATT HPS W/PEC/CH.SW. 2-PEDESTRIAN PUSH BUTTONS W/2-PEDESTRIAN INSTRUCTION SIGNS (R10-4C) EXTEND INTO HH#10 : 3"RSC 2-12/C#12 2-3/C#12 2-1/C#10 34.6'S 48'E
4	TYPE PA90-A-30 1-ONE WAY SIGNAL (OVERHEAD), END MOUNTED 2-TYPE 10B-POLE MOUNTED AT 0° AND 270° 2-PEDESTRIAN PUSH BUTTONS W/2-PEDESTRIAN INSTRUCTION SIGNS (R10-4C) EXTEND INTO HH#2 : 3"RSC 2-12/C#12 2-3/C#12 40'S 41.6'W

SIGNAL INDICATION CHART

FACE	PHASE	TYPE AND SIZE IN INCHES				
		R	Y	G	Y	G
2-1	2	12	12	12	-	-
2-2	2	12	12	12	-	-
2-3	2	12	12	12	-	-
4-1	4	12	12	12	-	-
4-2	4	12	12	12	-	-
4-3	4	12	12	12	-	-
6-1	6	12	12	12	-	-
6-2	6	12	12	12	-	-
6-3	6	12	12	12	-	-
8-1	8	12	12	12	-	-
8-2	8	12	12	12	-	-
8-3	8	12	12	12	-	-

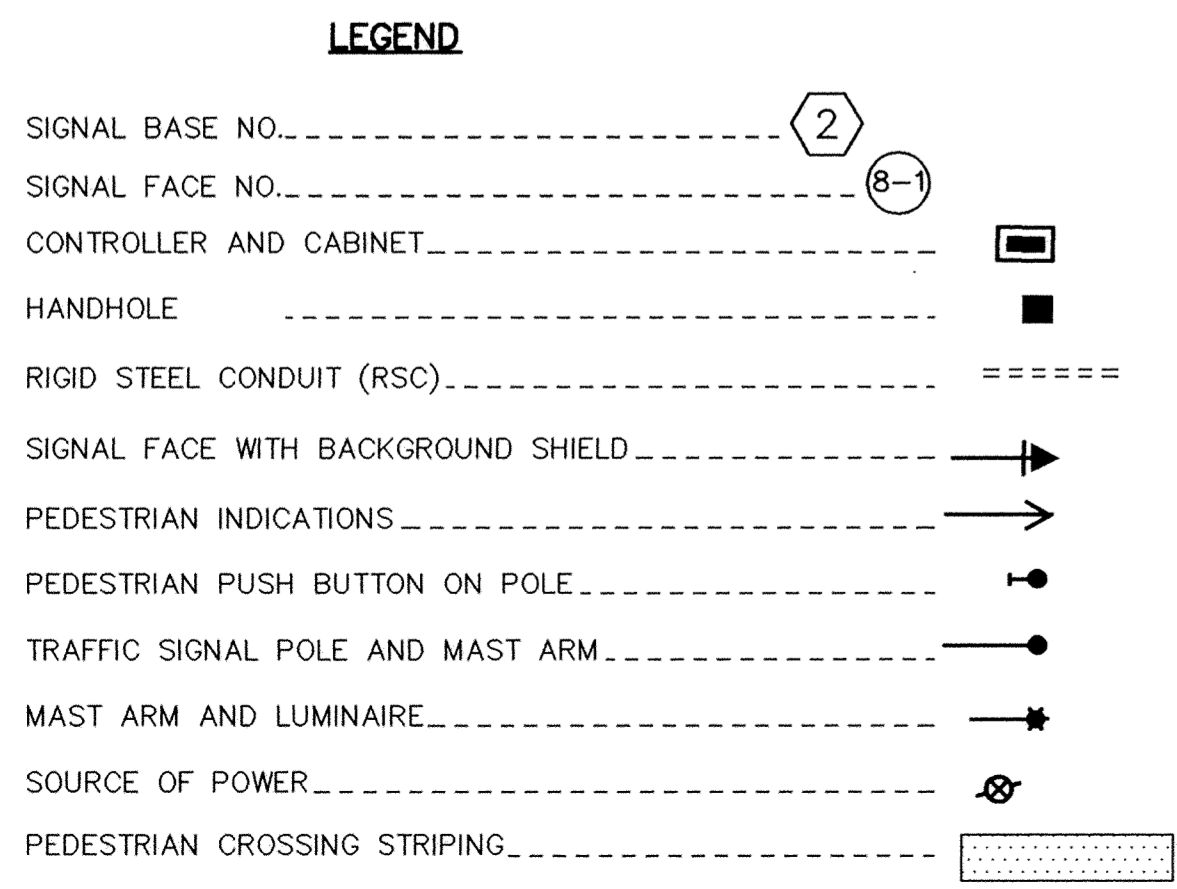
NOTE : SYSTEM SHALL FLASH ALL RED.



MAST ARM MOUNTED SIGNS

POLE NO.	SIGN PANEL	SIZE	NO. REQ.	NO. BRACKETS PER SIGN	BRACKET SPACING	SQ. FT. PER SIGN	α
1	D2	96"x18"	1	2	54"	12.00	10'
2	D1	72"x18"	1	2	54"	9.00	12'
3	D2	96"x18"	1	2	54"	12.00	10'
4	D1	72"x18"	1	2	54"	9.00	12'

- NOTES : (TYPE "D" SIGNS ONLY)
- COLOR - WHITE LEGEND AND BORDER ON GREEN BACKGROUND, FULLY REFLECTORIZED.
 - CORNERS EXTENDING BEYOND THE BORDER SHALL NOT BE TRIMMED.
 - FOR STRUCTURAL DETAILS, TYPE D SIGNS; SEE STANDARD SIGNS MANUAL, PAGE 105A.
 - FOR TYPE D STRINGER AND PANEL-JOINT DETAIL, SEE STANDARD SIGNS MANUAL.
 - SEE SHEET 10 FOR TYPE D SIGN DETAILS



- (A) EQUIPMENT PAD (SEE DETAIL)
CONTROLLER AND CABINET (SEE DETAIL)
EXTEND INTO HH3: 4"RSC; 4-12/C#12, 4-3/C#12, 3-2/C#14
EXTEND INTO HH4: 4"RSC; 4-12/C#12, 4-3/C#12, 9-2/C#14
PAD MOUNTED METER AND DISCONNECT
EXTEND INTO HH3 FROM DISCONNECT 1-1/4"RSC WITH 4-1/C#10
DISCONNECT TO METER: 1-1/4"RSC WITH 3-1/C#2
DISCONNECT TO CABINET: 1-1/4"RSC WITH 2-1/C#6 AND 1-1/C#6 BR.GR.
EXTEND FROM METER: 2"RSC WITH 3-1/C#2 INTO HH13

DETECTOR CHART

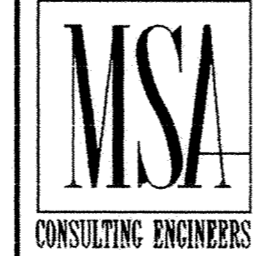
DESIGNATION	PHASE	SIZE (FT.)	FUNCTION	DISTANCE FROM STOP BAR
D2-1	2	2-6'x6'	o	160'
D2-2	2	2-6'x6'	o	5' AND 35'
D2-3	2	2-6'x6'	o	5' AND 35'
D4-1	4	2-6'x6'	o	160'
D4-2	4	2-6'x6'	o	5' AND 35'
D4-3	4	2-6'x6'	o	5' AND 35'
D6-1	6	2-6'x6'	o	160'
D6-2	6	2-6'x6'	o	5' AND 35'
D6-3	6	2-6'x6'	o	5' AND 35'
D8-1	8	2-6'x6'	o	160'
D8-2	8	2-6'x6'	o	5' AND 35'
D8-3	8	2-6'x6'	o	5' AND 35'

DETECTOR FUNCTION
o) CALL AND EXTEND DETECTOR

- NOTES:
- SEE SPECIAL PROVISIONS FOR OWNER FURNISHED EQUIPMENT
 - PEDESTRIAN INDICATIONS SHALL BE 12" X 12"
 - ALL SIGNAL FACES SHALL BE 12"-3 SECTION R-Y-G. ALL SIGNAL FACES SHALL HAVE BACKGROUND SHIELDS.
 - ALL HANDHOLES SHALL BE PVC HANDHOLES WITH TYPE C COVERS, EXCEPT ALL HANDHOLES LOCATED IN SIDEWALKS, MEDIANS OR OTHER PAVED SURFACES SHALL HAVE TYPE LD COVERS.
 - EACH LUMINAIRE SHALL HAVE A PHOTO-ELECTRIC CELL AND CHECK SWITCH.
 - SEE DETAIL SHEET FOR MAST ARM MOUNTED SIGNS.

I HEREBY CERTIFY THAT THIS PLAN, SPECIFICATION, OR REPORT WAS PREPARED BY ME OR UNDER MY DIRECT SUPERVISION AND THAT I AM A DULY REGISTERED PROFESSIONAL ENGINEER UNDER THE LAWS OF THE STATE OF MINNESOTA.

George M. Stumpff
DATE 4/19/94 REG. NO. 21849



1326 ENERGY PARK DRIVE
ST. PAUL, MINNESOTA 55108
(612) 644-4389

9800 SHELARD PARKWAY
MINNEAPOLIS, MINNESOTA 55441
(612) 546-0432

DATE	DESCRIPTION	DESIGNED	GMS
6/13/94	MINOR COMMENTS		
		CHECKED	GMS
		DRAWN	EGY

GRAPHIC SCALE
0 HORIZ. 20
0 VERT. 5

RECORD PLAN 1995

CITY OF ELK RIVER
INTERSECTION LAYOUT
SYSTEM "A"
SCHOOL STREET @ JACKSON AVENUE
S.A.P. 204-104-04 MTB, 204-107-04

DATE APRIL 1994 SHEET 59 OF 74 SHEETS PROJECT NO. 230-216-20