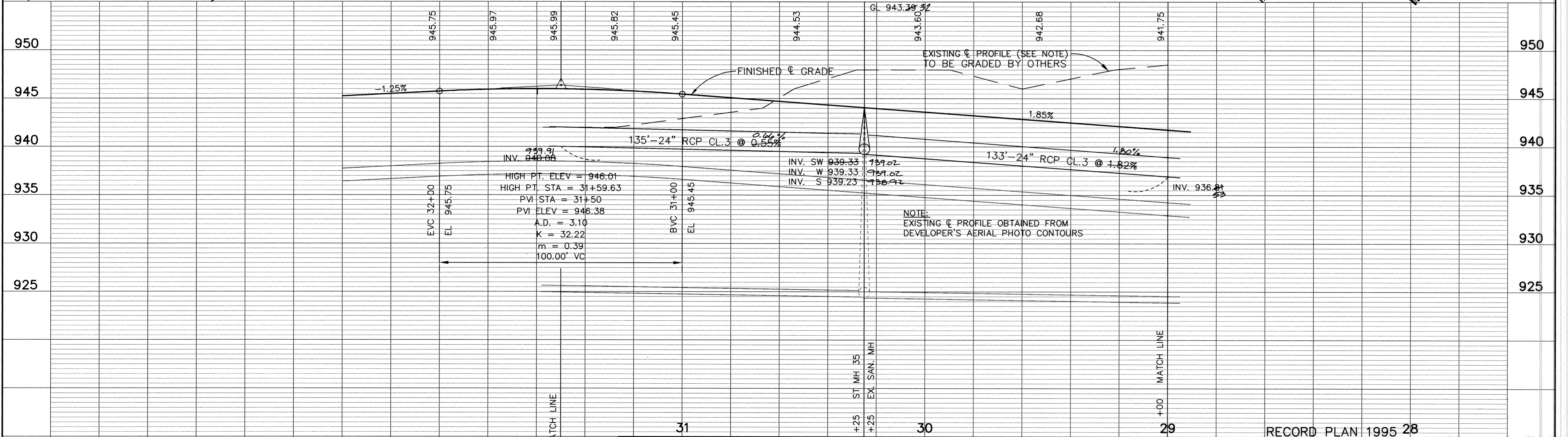
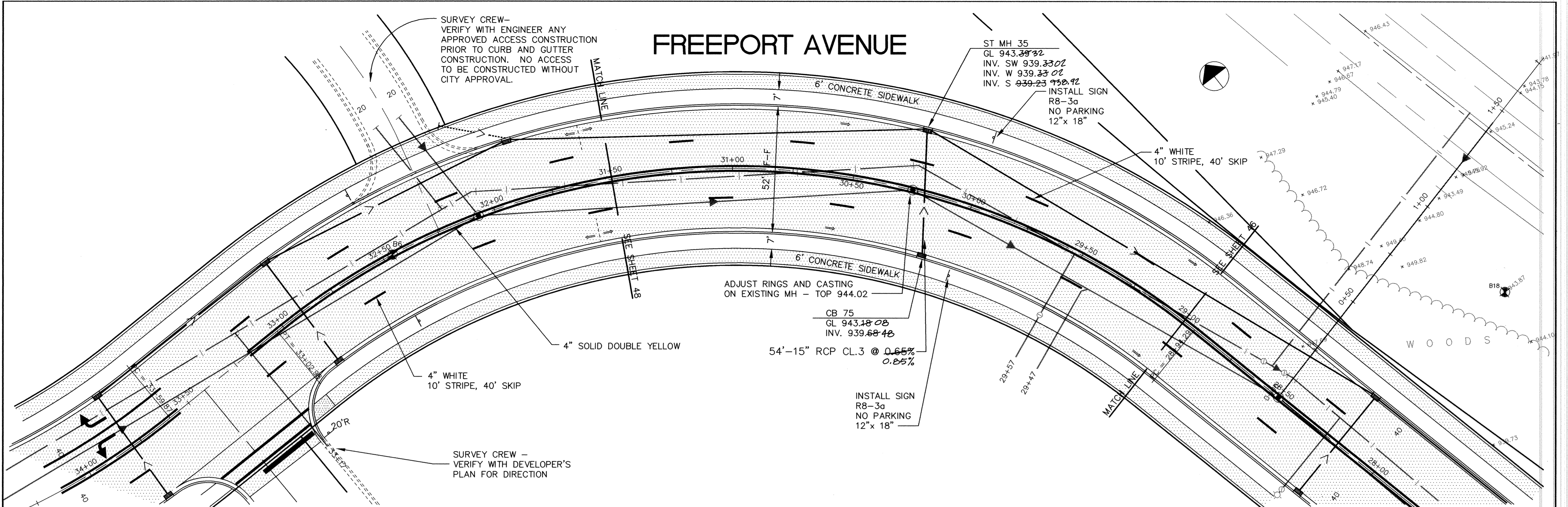


FREEPORT AVENUE



ER217F-7	33	32	31	30	29	RECORD PLAN 1995 28	CITY OF ELK RIVER STREET AND STORM SEWER FREEPORT AVENUE	STA. 29+00 TO 31+50
I HEREBY CERTIFY THAT THIS PLAN, SPECIFICATION, OR REPORT WAS PREPARED BY ME OR UNDER MY DIRECT SUPERVISION AND THAT I AM A DULY REGISTERED PROFESSIONAL ENGINEER UNDER THE LAWS OF THE STATE OF MINNESOTA. <i>Paul Boettcher</i> DATE 6-20-94 REG. NO. 13929			MSA CONSULTING ENGINEERS 1326 ENERGY PARK DRIVE ST. PAUL, MINNESOTA 55108 (612) 644-4389 9800 SHELARD PARKWAY MINNEAPOLIS, MINNESOTA 55441 (612) 546-0432		DATE 6/02/94 6/17/94 DESCRIPTION 33+20 LOWER V.C. FREEPORT AVE. GRADE	DESIGNED PEB CHECKED CLS DRAWN CLS GRAPHIC SCALE 0 HORIZ. 20 0 VERT. 5	DATE APRIL 1994 SHEET 47 OF 74 SHEETS PROJECT NO. 230-217	