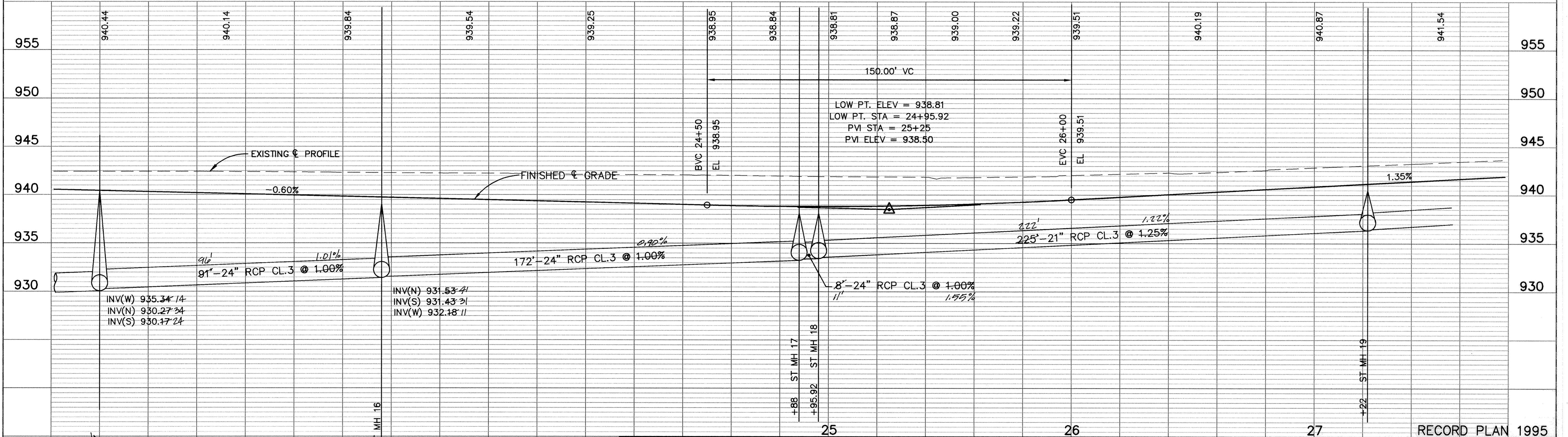
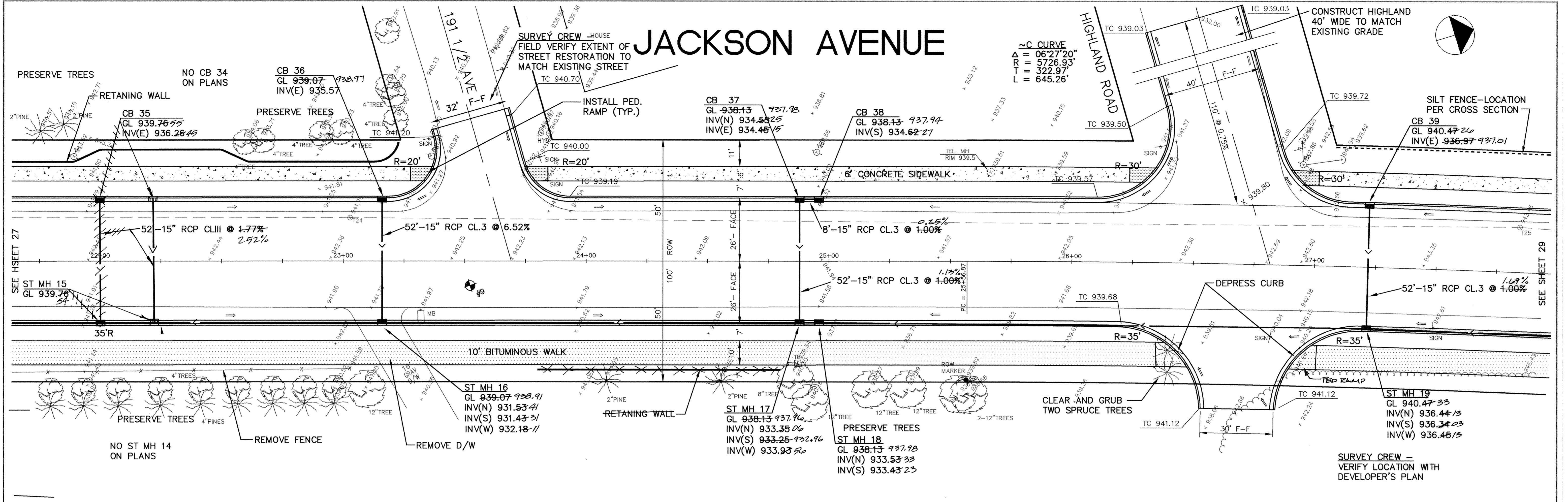


JACKSON AVENUE



22	23	24
----	----	----

I HEREBY CERTIFY THAT THIS PLAN, SPECIFICATION, OR REPORT WAS PREPARED BY ME OR UNDER MY DIRECT SUPERVISION AND THAT I AM A DULY REGISTERED PROFESSIONAL ENGINEER UNDER THE LAWS OF THE STATE OF MINNESOTA.

Paul Poethel
DATE 6-2-94 REG. NO. 13929

MSA
CONSULTING ENGINEERS

1326 ENERGY PARK DRIVE
ST. PAUL, MINNESOTA 55108
(612) 644-4389

9800 SHELARD PARKWAY
MINNEAPOLIS, MINNESOTA 55441
(612) 546-0432

REVISIONS	DATE	DESCRIPTION	DESIGNED	CHECKED	DRAWN
	5/20/94	STATE AID COMMENTS			
	6-2-94	REVISE STORM @ 22+00 REVISE DRIVEWAY @ 26+50			

GRAPHIC SCALE
0 HORIZ. 20
0 VERT. 5

CITY OF ELK RIVER
JACKSON AVE. RECONSTRUCTION
SCHOOL ST. TO T.H. 169
S.A.P. 204-104-04 MTB 22+00 TO 27+50

DATE APRIL 1994 SHEET 28 OF 74 SHEETS PROJECT NO. 230-216

SD&CO PRODUCTS • NEW HOPKINS, MINNESOTA
 REPRODUCED BY PART NUMBER 6582
 SD&CO PRODUCTS • NEW HOPKINS, MINNESOTA
 REPRODUCED BY PART NUMBER 6582
 SD&CO PRODUCTS • NEW HOPKINS, MINNESOTA
 REPRODUCED BY PART NUMBER 6582
 SD&CO PRODUCTS • NEW HOPKINS, MINNESOTA
 REPRODUCED BY PART NUMBER 6582