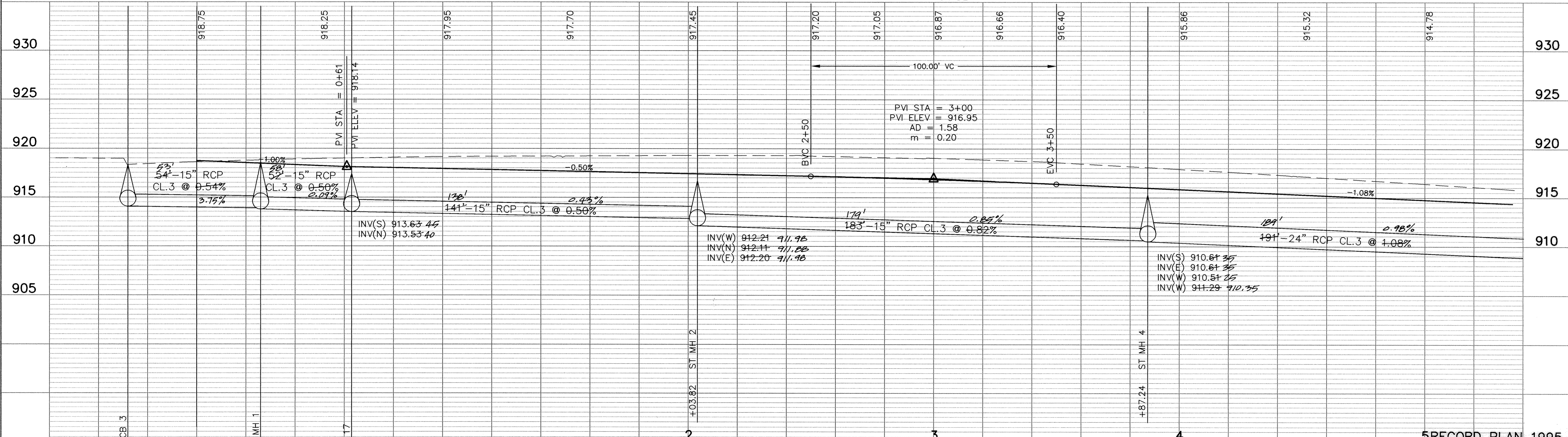
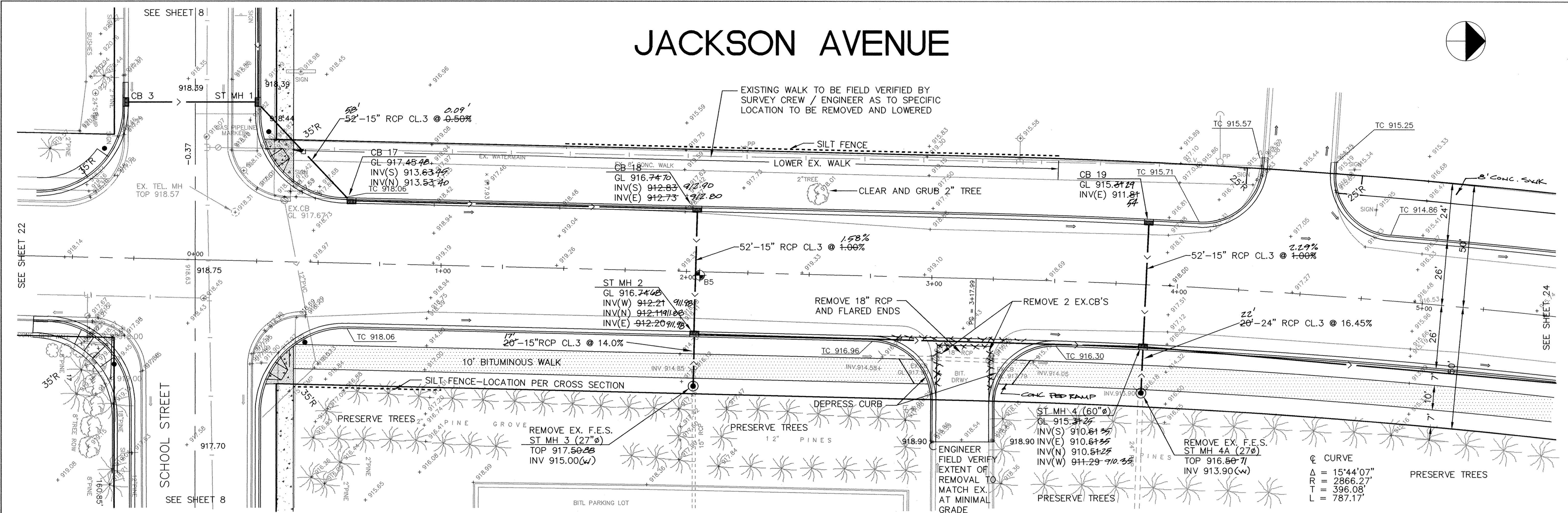
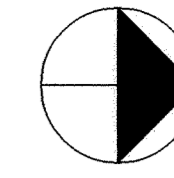


JACKSON AVENUE



DATE	DESCRIPTION	DESIGNED	CHECKED	DRAWN
5/20/94	STATE AID COMMENTS			

I HEREBY CERTIFY THAT THIS PLAN, SPECIFICATION, OR REPORT WAS PREPARED BY ME OR UNDER MY DIRECT SUPERVISION AND THAT I AM A DULY REGISTERED PROFESSIONAL ENGINEER UNDER THE LAWS OF THE STATE OF MINNESOTA. <i>Fred Barth</i> DATE 4-29-94 REG. NO. 13929		1326 ENERGY PARK DRIVE ST. PAUL, MINNESOTA 55108 (612) 644-4389 9800 SHELARD PARKWAY MINNEAPOLIS, MINNESOTA 55441 (612) 546-0432	DESIGNED PEB CHECKED PB DRAWN GRAPHIC SCALE 0 HORIZ. 20 0 VERT. 5	CITY OF ELK RIVER JACKSON AVE. RECONSTRUCTION SCHOOL ST. TO T.H. 169 S.A.P. 204-104-04 MTB 0+00 TO 5+00 DATE APRIL 1994 SHEET 23 OF 74 SHEETS PROJECT NO. 230-216
---	--	---	--	--

DRAWING NUMBER
 SCHOOL 95
 23
 822