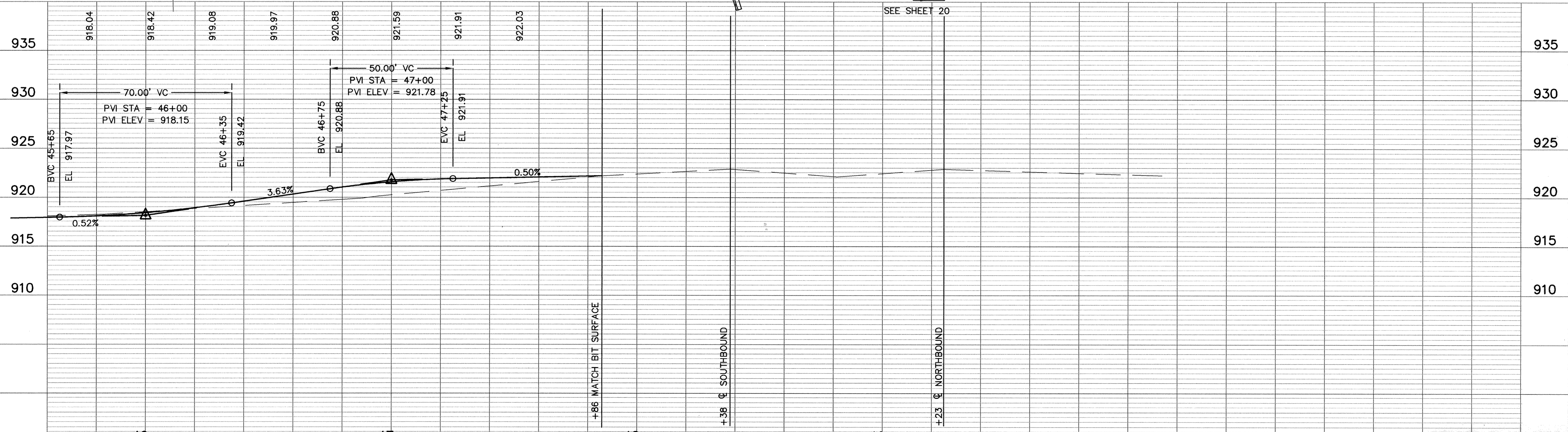
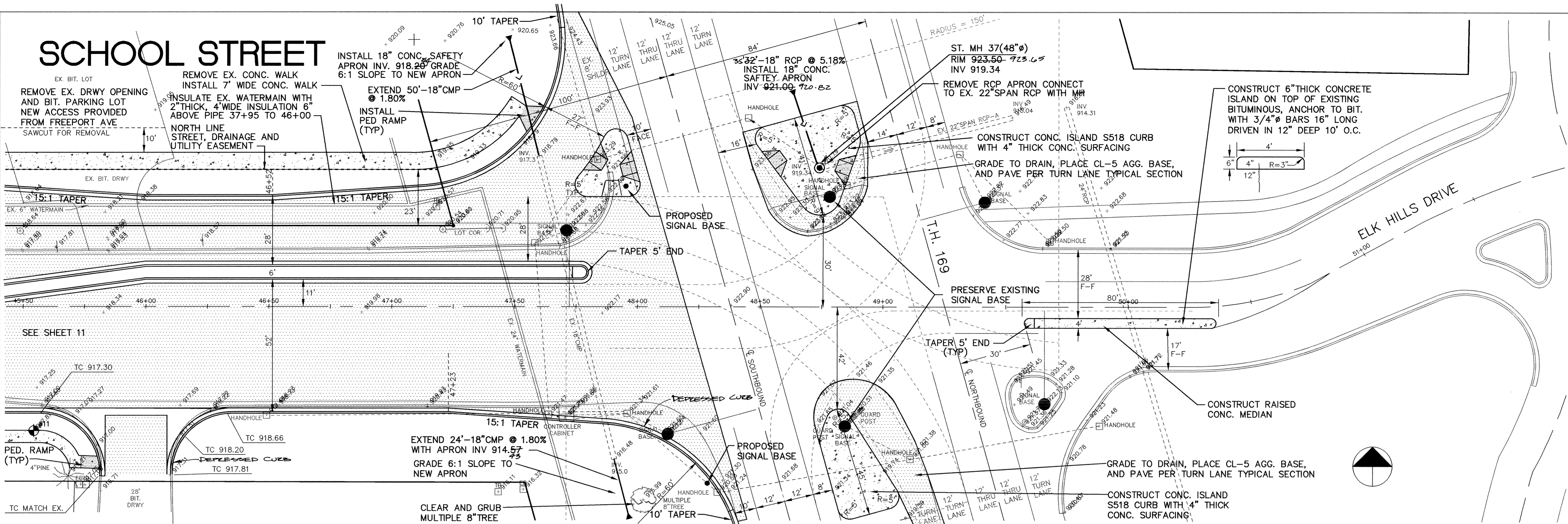


SCHOOL STREET



ER216-6	46	47	48	49	RECORD PLAN 1995
I HEREBY CERTIFY THAT THIS PLAN, SPECIFICATION, OR REPORT WAS PREPARED BY ME OR UNDER MY DIRECT SUPERVISION AND THAT I AM A DULY REGISTERED PROFESSIONAL ENGINEER UNDER THE LAWS OF THE STATE OF MINNESOTA. <i>Paul Baettig</i> DATE 6-2-94 REG. NO. 3929			MSA CONSULTING ENGINEERS 1326 ENERGY PARK DRIVE ST. PAUL, MINNESOTA 55108 (612) 644-4389 9800 SHELARD PARKWAY MINNEAPOLIS, MINNESOTA 55441 (612) 546-0432		CITY OF ELK RIVER STREET RECONSTRUCTION SCHOOL STREET 204-107-04 45+50 TO 50+50
REVISIONS 6-1-94 REVISE TAPERS ON MEDIAN AND N. CURB, RIGHT TURN WIDTH AT T.H. 169			DESIGNED PEB CHECKED DRAWN GRAPHIC SCALE 0 HORIZ. 20 0 VERT. 5		DATE APRIL 1994 SHEET 12 OF 74 SHEETS PROJECT NO. 230-216

Thu Jun 2 11:31:54 1994