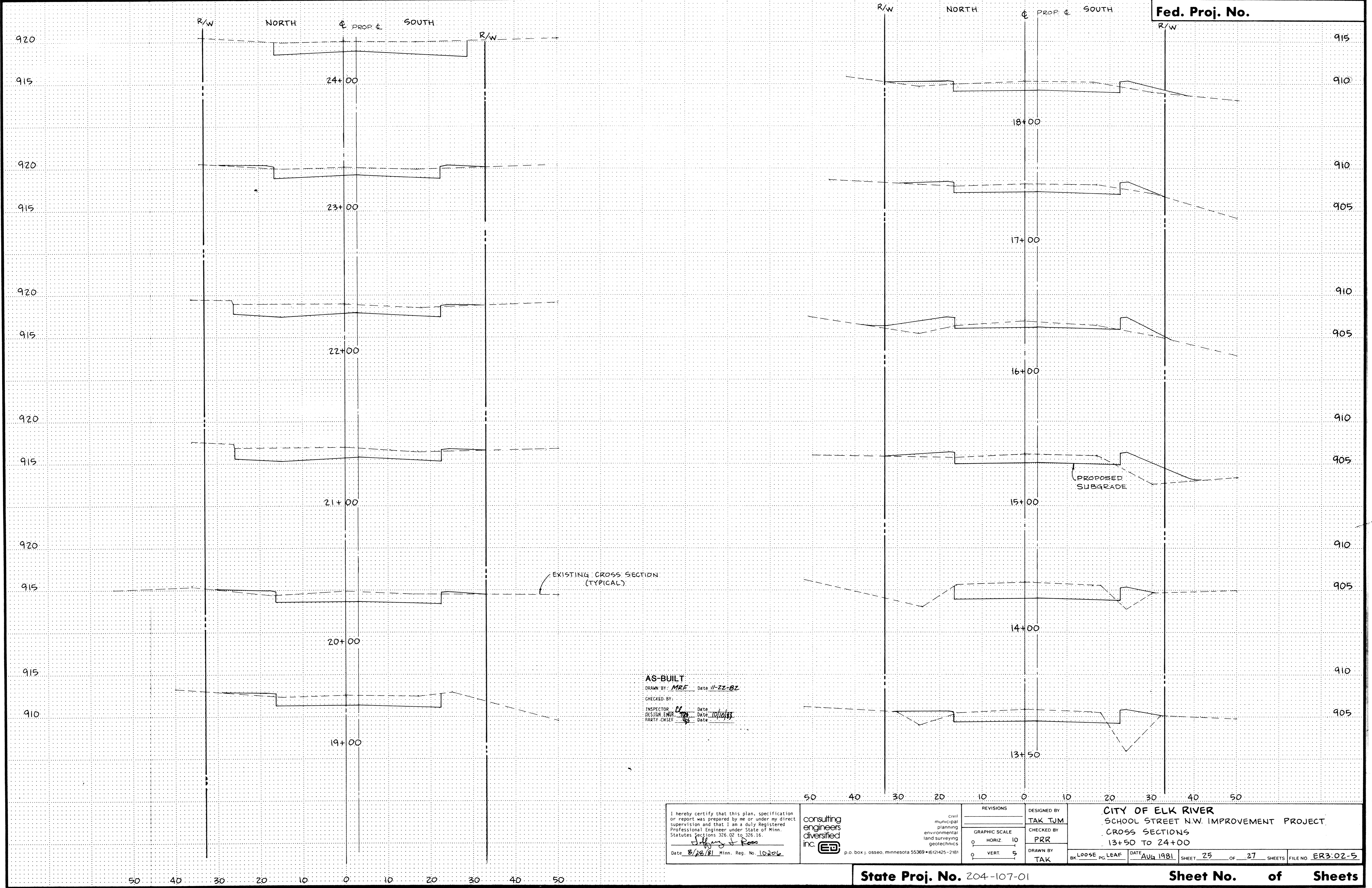


DATE REVISIONS - NEW LINE MANAGEMENT
REVISIONS BY PART NUMBER 6055
DATE REVISIONS - NEW LINE MANAGEMENT
REVISIONS BY PART NUMBER 6055
DATE REVISIONS - NEW LINE MANAGEMENT
REVISIONS BY PART NUMBER 6055
DATE REVISIONS - NEW LINE MANAGEMENT
REVISIONS BY PART NUMBER 6055

Fed. Proj. No.



AS-BUILT
 DRAWN BY: MRF Date: 11-22-82
 CHECKED BY: [Signature] Date: [Blank]
 INSPECTOR: [Signature] Date: 10/10/83
 DESIGN ENGR: [Signature] Date: [Blank]
 PARTY CHIEF: [Signature] Date: [Blank]

I hereby certify that this plan, specification or report was prepared by me or under my direct supervision and that I am a duly Registered Professional Engineer under State of Minn. Statutes Sections 326.02 to 326.16. <u>[Signature]</u> Date: 8/28/81 Minn. Reg. No. 10206	consulting engineers diversified inc. p.o. box 1, osseo, minnesota 55369 • 1612425-2181	CIVIL municipal planning environmental land surveying geotechnics	DESIGNED BY TAK TJM CHECKED BY PRR DRAWN BY TAK	CITY OF ELK RIVER SCHOOL STREET N.W. IMPROVEMENT PROJECT CROSS SECTIONS 13+50 TO 24+00
		REVISIONS GRAPHIC SCALE 0 HORIZ 10 0 VERT 5	DATE AUG 1981	SHEET 25 OF 27 SHEETS FILE NO. ER3:02-5