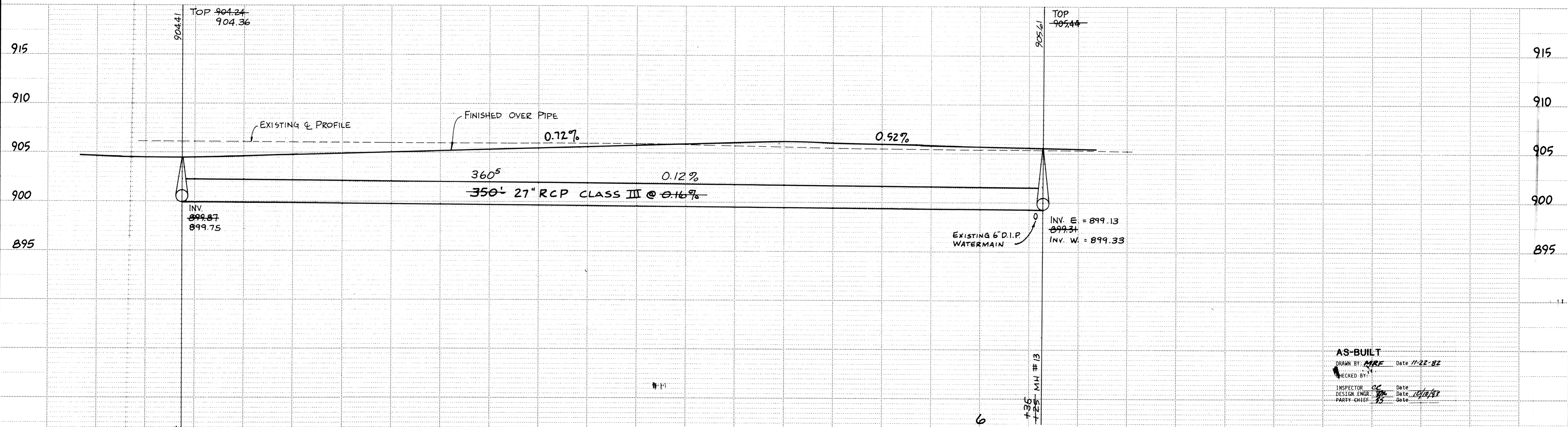


NOTE:
SEE NOTES ON SHEET 12



AS-BUILT
 DRAWN BY: *MRE* DATE: 11-22-82
 CHECKED BY: *JH*
 INSPECTOR: *CE* DATE: 10/18/82
 DESIGN ENGR: *MRJ* DATE: *10/18/82*
 PARTY CHIEF: *MRJ*

I hereby certify that this plan, specification or report was prepared by me or under my direct supervision and that I am a duly Registered Professional Engineer under State of Minn. Statutes, Chapters 326.01 to 326.16.
Mr. J. R. Koop
 Date: 8/28/81 Minn. Reg. No. 10206

consulting engineers diversified inc.
 civil, municipal, planning, environmental, and surveying geotechnics
 p.o. box 1 osseo minnesota 55369 • (612) 425-2181

DESIGNED BY TJM	CHECKED BY JH4	DRAWN BY MRJ
REVISIONS		
GRAPHIC SCALE		
HORIZ	20	
VERT	5	

CITY OF ELK RIVER
 SCHOOL STREET IMPROVEMENT PROJECT
 STORM SEWER
 STA 2+75 TO 6+25
 BK LOOSE PG LEAF DATE MAY 1982 SHEET 13 OF 27 SHEETS FILE NO. ER 3-02-5