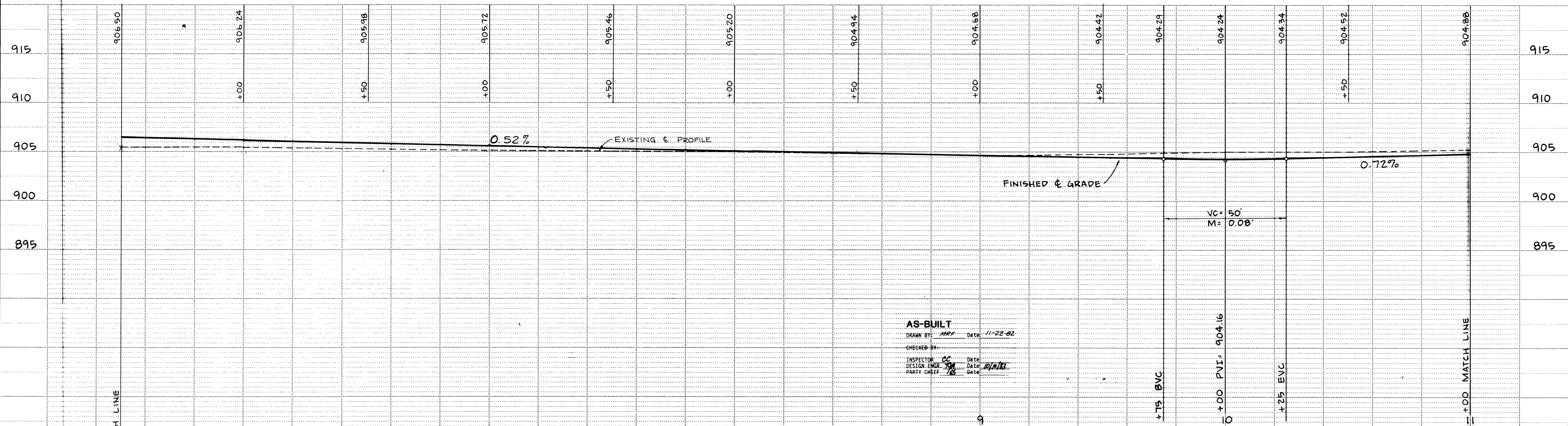


NOTES:
 1) SEE GENERAL STREET CONSTRUCTION NOTES ON SHEET 2.
 2) SEE STREET CONSTRUCTION LEGEND ON SHEET 2.



AS-BUILT
 DRAWN BY: *MRF* DATE: *11-22-02*
 CHECKED BY:
 INSPECTOR: *CC* DATE: *12/1/02*
 DESIGN ENGR: *RM* DATE: *12/1/02*
 PARTY CHIEF: *RB* DATE:

I hereby certify that this plan, specification or report was prepared by me or under my direct supervision and that I am a duly Registered Professional Engineer under State of Minn. Statutes Sections 325.02 to 326.16.
J. J. Leach
 Date *8/22/01* Minn. Reg. No. *10206*

consulting engineers diversified inc.
 civil municipal planning environmental land surveying geotechnics
 p o box 1 osseo minnesota 55369 • (612) 425-2181

REVISIONS	
GRAPHIC SCALE	CHECKED BY
0 HORIZ 20	PRR
0 VERT 5	DRAWN BY
	TAK

DESIGNED BY: **TAK TJM**
 CHECKED BY: **PRR**
 DRAWN BY: **TAK**
CITY OF ELK RIVER
SCHOOL ST. N.W. IMPROVEMENT PROJECT
STREET CONSTRUCTION
5+50 TO 11+00
 DATE: **JULY 1981** SHEET **4** OF **27** SHEETS FILE NO. **ER3:02-5**

DRAWING NUMBER
 SCHOOL 81
 4
 64