

DRAWING NUMBER

DRAWING NUMBER

DRAWING NUMBER

DRAWING NUMBER  
SCH0081

# M.S.A.S. 204 SCHOOL STREET

BETWEEN PROCTOR STREET AND U.S. HIGHWAY NO. 169

GROSS LENGTH	4840 FEET	.916 MILES
BRIDGES LENGTH	FEET	MILES
EXCEPTION LENGTH	FEET	MILES
NET LENGTH	FEET	MILES

PLAN 1" = 20'

SCALES: PROFILE HOR. 1" = 20'  
VERT. 1" = 5'

CROSS-SECTIONS HOR. 1" = 10'  
VERT. 1" = 5'

### INDEX OF SHEETS

- 1) TITLE PAGE
- 2) DETAILS & EST. QUANTITIES
- 3-11) STREET PLAN & PROFILE
- 12-17) STORM SEWER PLAN & PROFILE
- 18-22) SIGNING & PAVEMENT MARKINGS
- 23-26) STREET CROSS SECTIONS

I hereby certify that this drawing and report was prepared by me or under my direct supervision and that I am a duly licensed professional engineer under the laws of the State of Minnesota. See Chapter 100, Minnesota Statutes.

*Jeffrey J. Ross*  
8/20/81 License No. 10206

APPROVED *Jeffrey J. Ross* CITY ENGINEER DATE 5/10/82

RECOMMENDED FOR APPROVAL *R. A. Reed* DISTRICT STATE AID ENGINEER DATE 9/3/81

RECOMMENDED FOR APPROVAL *Dulvort D. Orndahl* STATE PLANS & SPEC. ENGINEER DATE 11-20-81

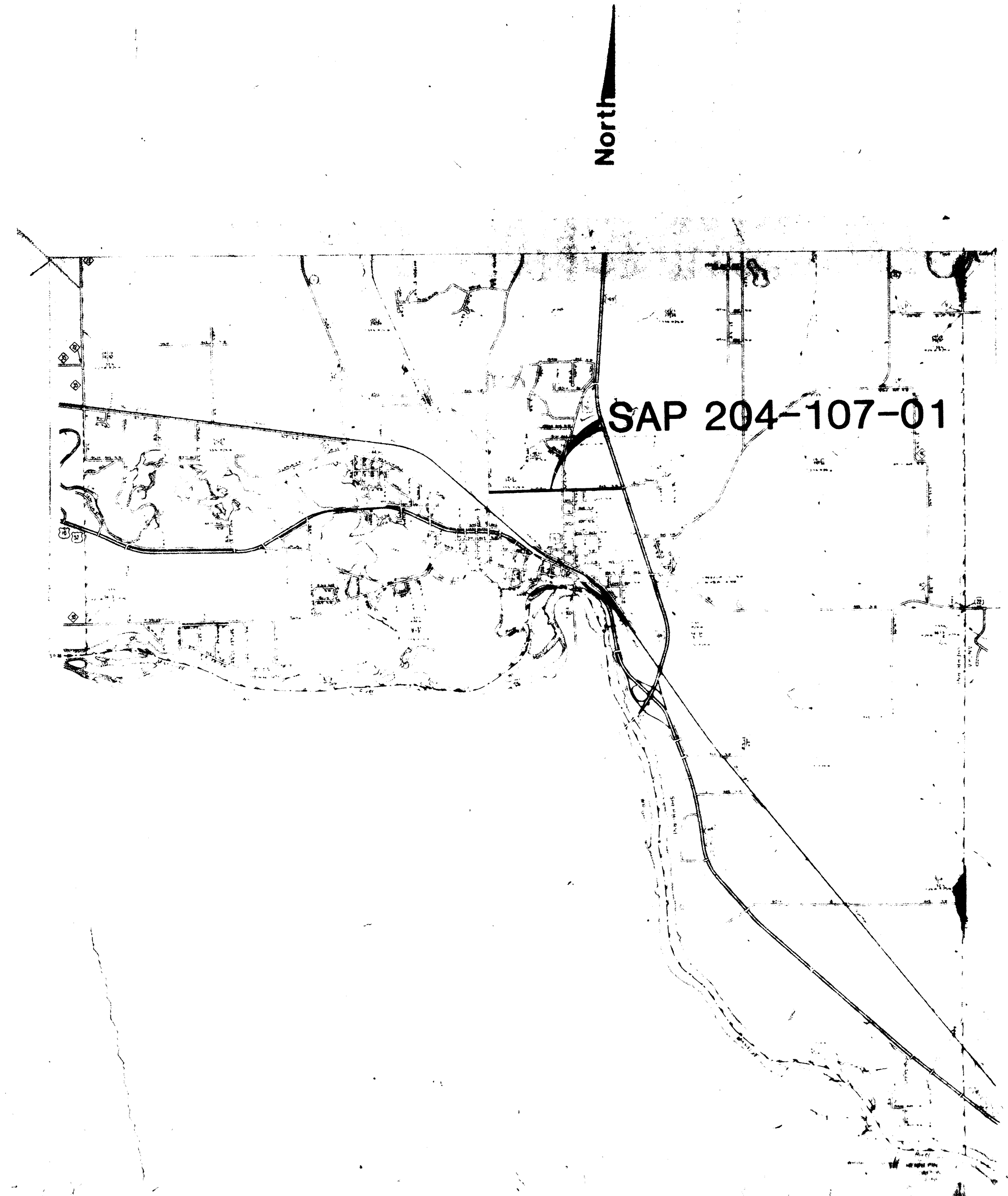
APPROVED 11/20 81 *Sheldon W. Gray* STATE AID DIRECTOR DATE 7/4/82

SCHOOL ST. 1981  
RD 41-67

# CITY OF ELK RIVER

SEC. 34 TWP. 33 R. 26

## SCHOOL STREET IMPROVEMENT PROJECT



### PLANS SYMBOLS

SECTION LINE	---	TREES	(10) (17)
QUARTER LINE	----	BRUSH OR SHRUBS	o o o
SIXTEENTH LINE	-----	HEDGE	~~~~~
RIGHT OF WAY LINE	=====	CONIFERS	* * * * *
PROPERTY LINE	=====	SWAMP	(wavy lines with trees)
CENTER LINE	=====	MAILBOX	(M)
RIVER OR CREEK	(wavy line)	SIGN	(S)
LAKE OR POND	(circle)	FENCE	(dashed line)
CULVERT	(dashed line with arrows)		
BRIDGE	(dashed line with arches)		
RETAINING WALL	(dashed line with vertical lines)		

### UTILITIES SYMBOLS

SANITARY SEWER	(line with circles)	MANHOLE	(circle)
STORM SEWER	(line with triangles)	CATCH BASIN	(circle with cross)
WATERMAIN	(line with squares)	VALVE	(circle with dot)
GAS LINE	(line with diamonds)	HYDRANT	(circle with cross)
POWER LINE	(line with T's)	POWER, TELEPHONE, OR LIGHT POLE	(circle with cross)
UNDERGROUND TELEPHONE	(line with T's)	ANCHOR	(circle with cross)

ADT CURRENT YEAR 2000 (1980)

ADT FUTURE YEAR 4000 (2000)

DESIGN SPEED 35 m.p.h.

LOCALLY RESTRICTED TO 20 m.p.h.

SOIL TYPE (SUBGRADE) A-3 (R=70)

STRUCTURAL DESIGN 9-TON

- SPECIFICATIONS REFERENCE -  
The 1978 edition of The Minnesota Department of Transportation "Standard Specifications for Highway Construction" shall govern.

CONSULTING ENGINEERS, DIVERSIFIED, INC. APRIL, 1978 REVISED