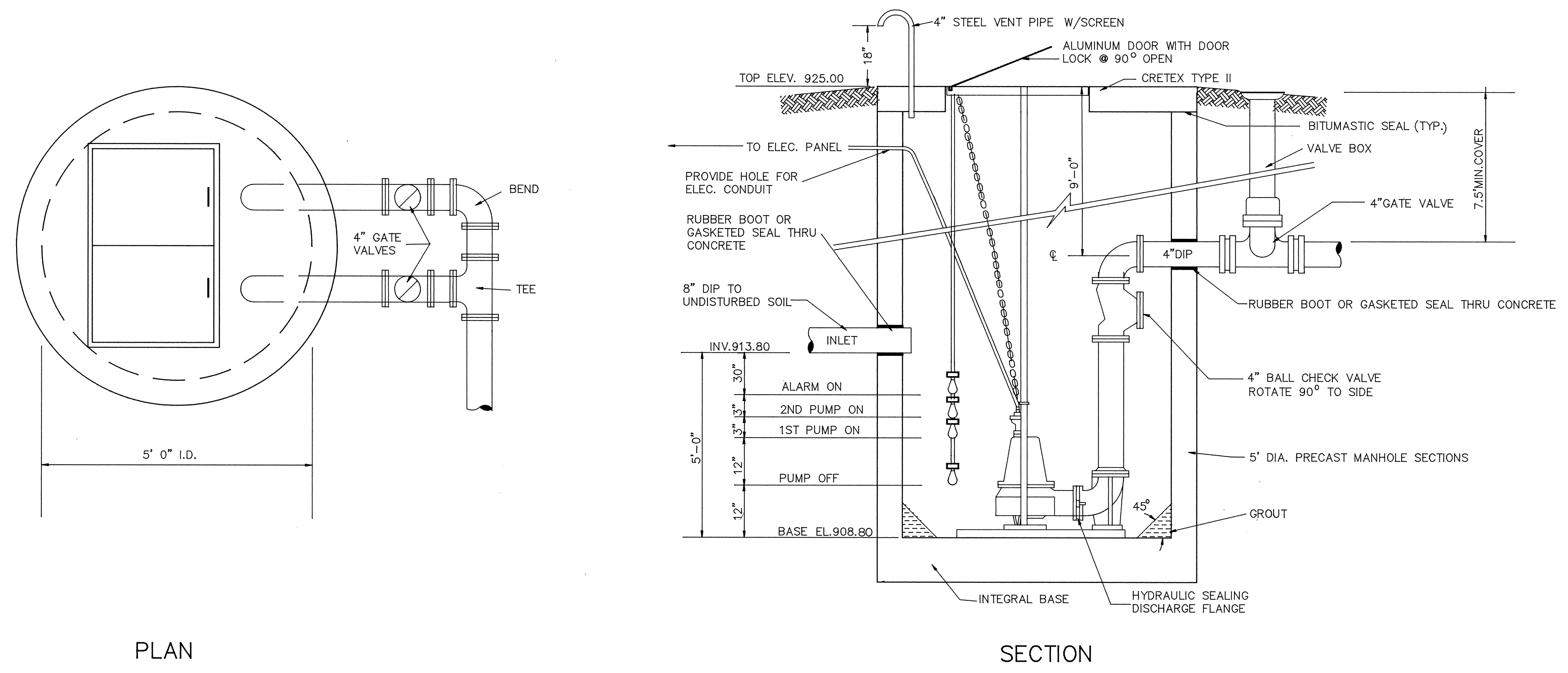


SARGO PRODUCTS • NEW HARBOR, MINNESOTA  
REVISIONS BY PART NUMBER 8838

SARGO PRODUCTS • NEW HARBOR, MINNESOTA  
REVISIONS BY PART NUMBER 8838

SARGO PRODUCTS • NEW HARBOR, MINNESOTA  
REVISIONS BY PART NUMBER 8838

SARGO PRODUCTS • NEW HARBOR, MINNESOTA  
REVISIONS BY PART NUMBER 8838



# LIFT STATION DETAILS

RECORD PLAN NOV. 1988

**MSA** CONSULTING ENGINEERS  
**Maier Stewart & Associates Inc.**  
 1959 SLOAN PLACE (612) 774-6021 ST. PAUL, MINNESOTA 55117

DATE	DESCRIPTION	DESIGNED
		CHECKED
		DRAWN MRJ
		GRAPHIC SCALE
		0 HORIZ.
		0 VERT.

CITY OF ELK RIVER  
 LIFT STATION DETAILS

DATE MARCH, 1988 SHEET 13 OF 17 SHEETS PROJECT NO. 230-034