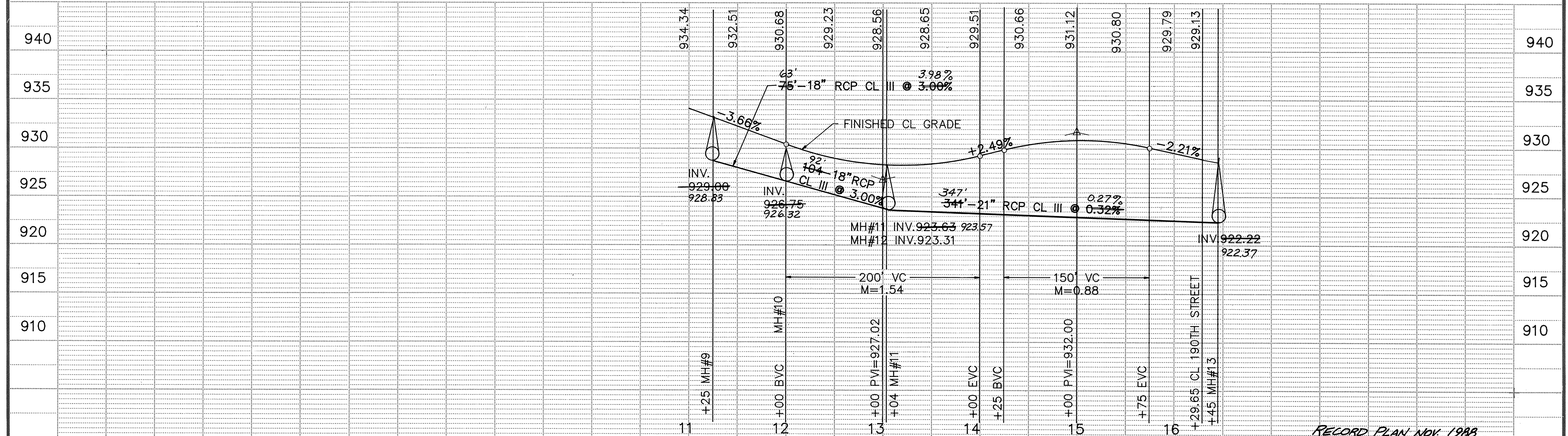
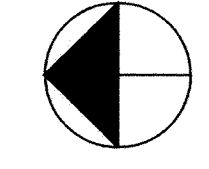
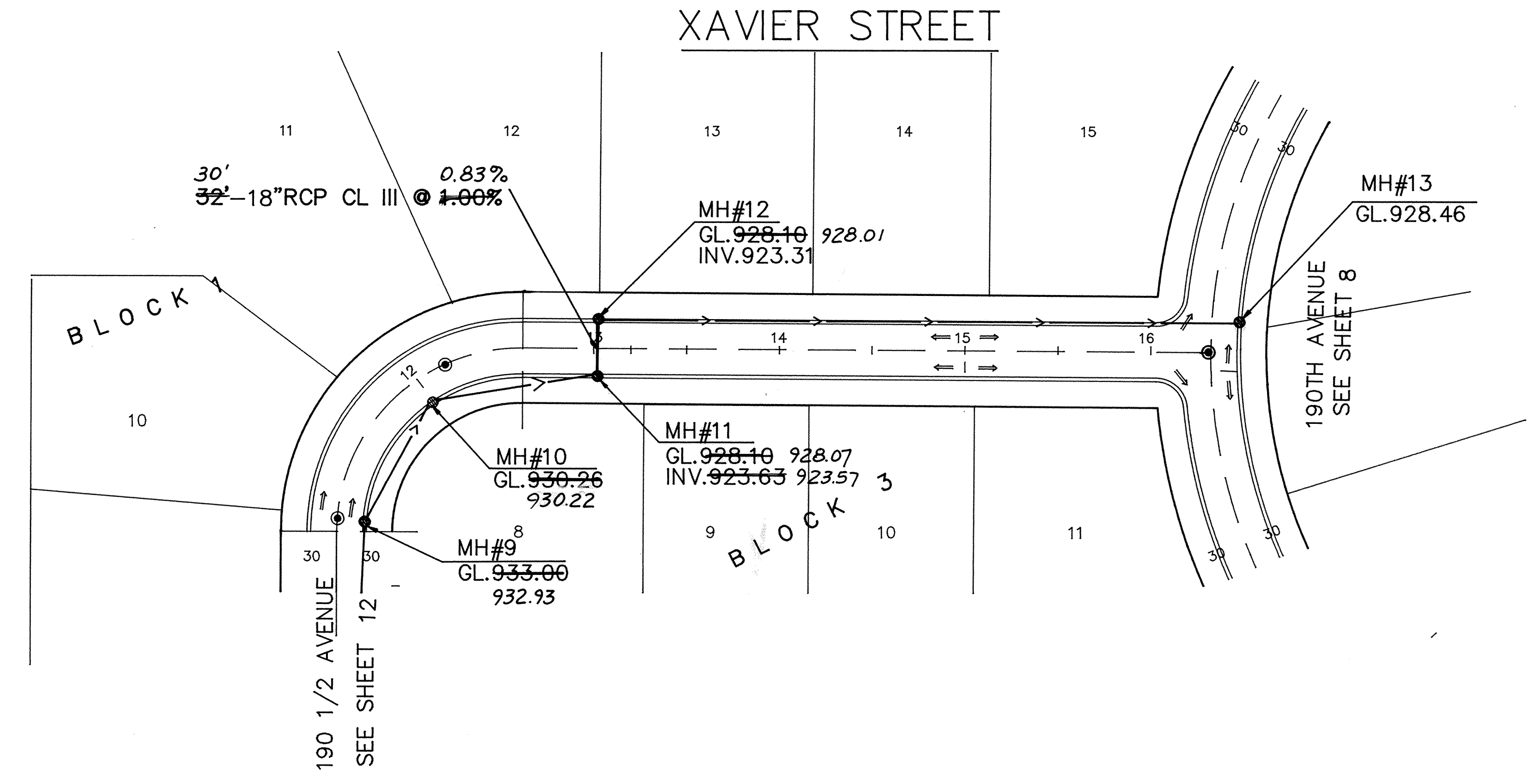


SDCO PRODUCTS • NEW HOPK, MINNESOTA
 REPRODUCED BY PART NUMBER 6522
 PREVIOUS EDITIONS OF THIS DRAWING ARE OBSOLETE



RECORD PLAN NOV. 1988

<p>Maier Stewart & Associates Inc. CONSULTING ENGINEERS</p> <p>1959 SLOAN PLACE (612)774-6021 ST. PAUL, MINNESOTA 55117</p>	REVISIONS DATE DESCRIPTION	DESIGNED CHECKED DRAWN <u>MRJ</u> GRAPHIC SCALE 1" = 50' VERT. 5'	CITY OF ELK RIVER STREET AND STORM SEWER XAVIER STREET	DATE <u>MAR. 1988</u> SHEET <u>11</u> OF <u>17</u> SHEETS PROJECT NO. <u>230.034</u>
	281			