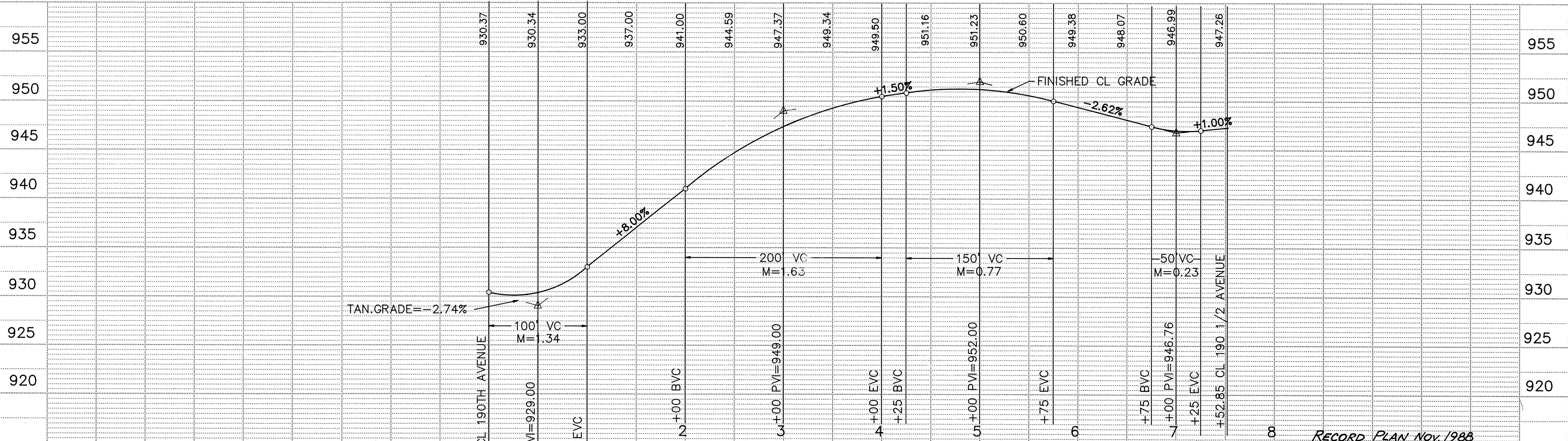
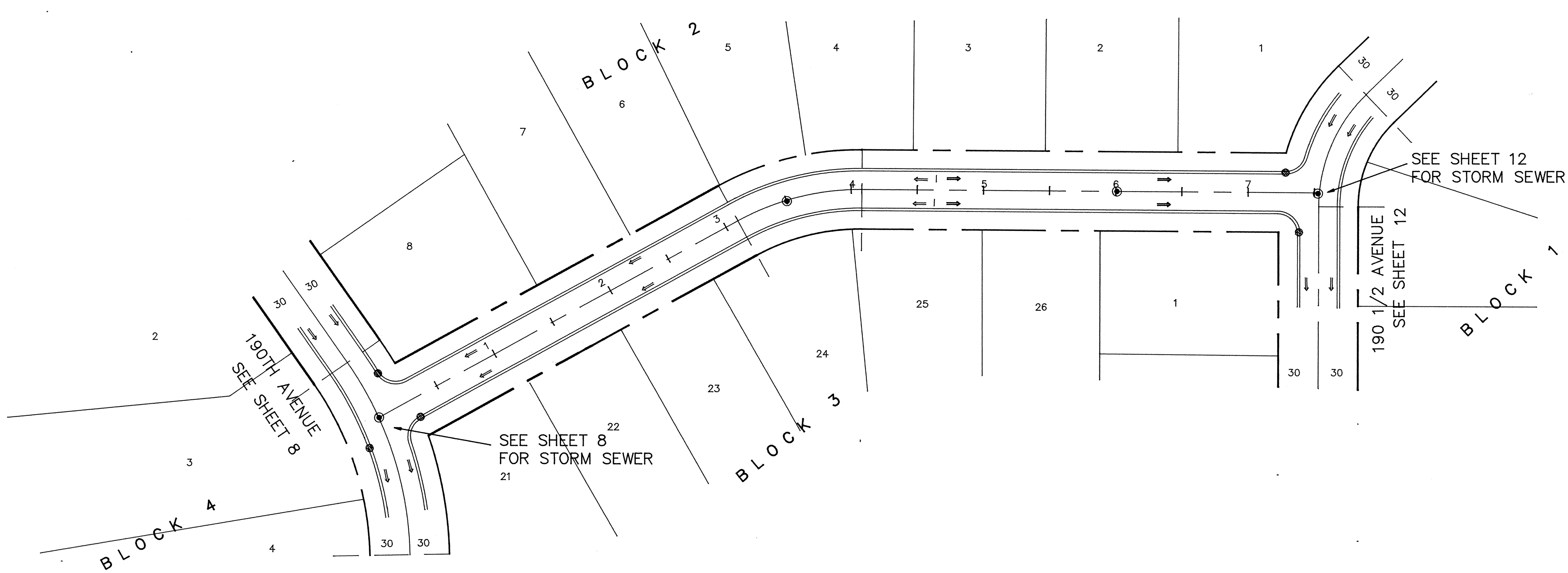
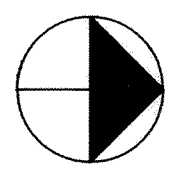


SACD PRODUCTS • NEW HOPE, MINNESOTA
REVISIONS: 100% OF WORK ON THIS LINE
SACD PRODUCTS • NEW HOPE, MINNESOTA
REVISIONS: 100% OF WORK ON THIS LINE
SACD PRODUCTS • NEW HOPE, MINNESOTA
REVISIONS: 100% OF WORK ON THIS LINE
SACD PRODUCTS • NEW HOPE, MINNESOTA
REVISIONS: 100% OF WORK ON THIS LINE

ZANE STREET



RECORD PLAN Nov. 1988

<p>Maier Stewart & Associates Inc. CONSULTING ENGINEERS 1959 SLOAN PLACE (612)774-6021 ST. PAUL, MINNESOTA 55117</p>	<p>DATE</p> <p>DESCRIPTION</p>	<p>DESIGNED</p> <p>CHECKED</p> <p>DRAWN MRJ</p> <p>GRAPHIC SCALE</p> <p>0 HORIZ. 50'</p> <p>0 VERT. 5'</p>	<p>CITY OF ELK RIVER STREET CONSTRUCTION ZANE STREET</p>
	<p>REVISIONS</p>	<p>DATE MAR. 1988</p> <p>SHEET 10 OF 17 SHEETS</p> <p>PROJECT NO. 230-034</p>	<p>282</p>