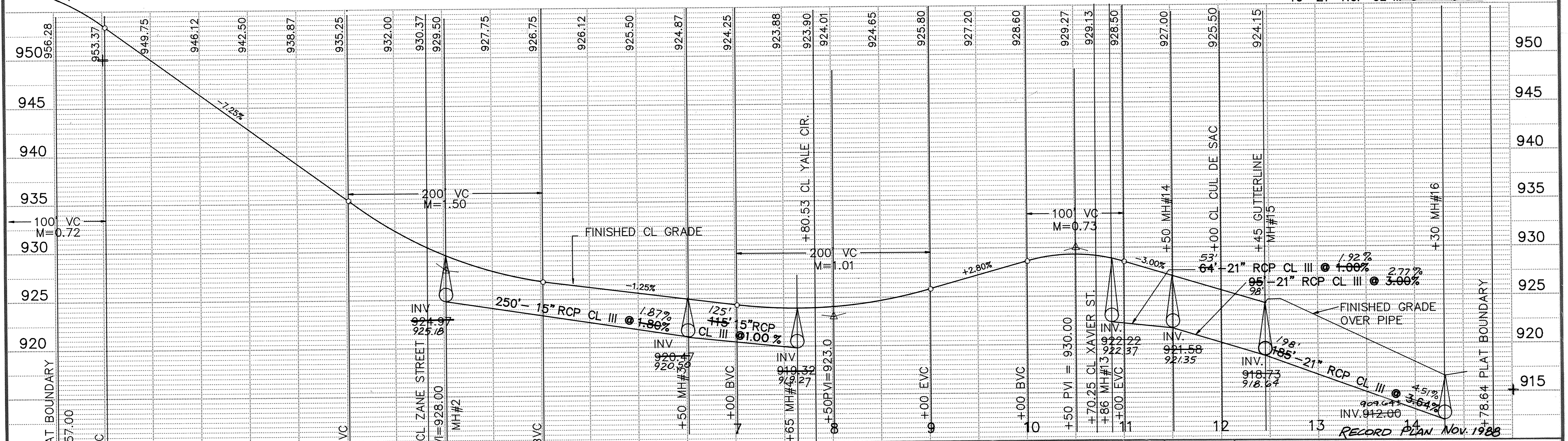
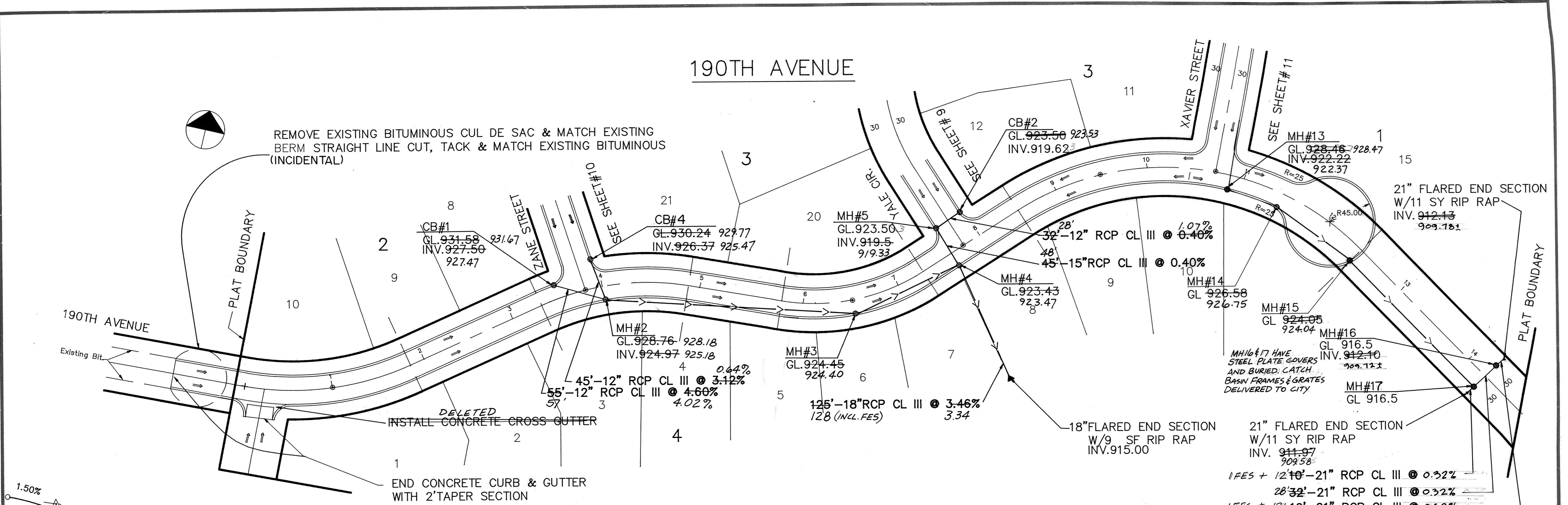


190TH AVENUE

REMOVE EXISTING BITUMINOUS CUL DE SAC & MATCH EXISTING BERM STRAIGHT LINE CUT, TACK & MATCH EXISTING BITUMINOUS (INCIDENTAL)



MSA CONSULTING ENGINEERS
 Maier Stewart & Associates Inc.
 1959 SLOAN PLACE (612)774-6021 ST. PAUL, MINNESOTA 55117

DATE	DESCRIPTION	DESIGNED	CHECKED
		MRJ	
REVISIONS		DRAWN	
		GRAPHIC SCALE	
		HORIZ. 50'	
		VERT. 5'	
DATE		MAR. 1988	
SHEET		8 OF 17 SHEETS	
PROJECT NO.		230-034	

CITY OF ELK RIVER
STREET AND STORM SEWER
190TH AVENUE

RECORD PLAN Nov. 1988