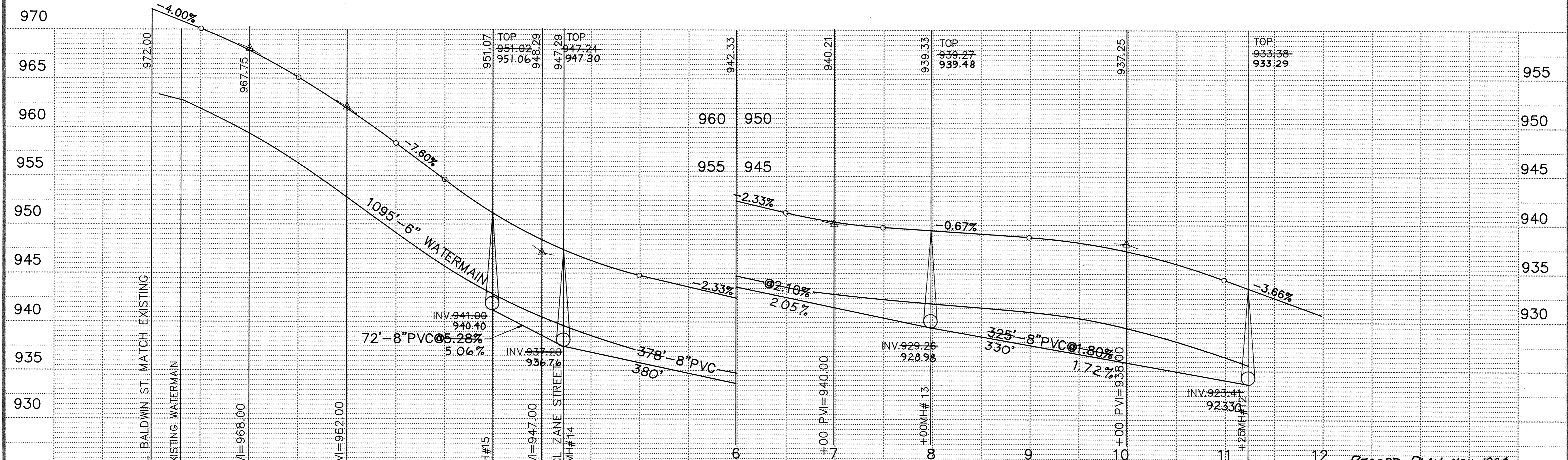
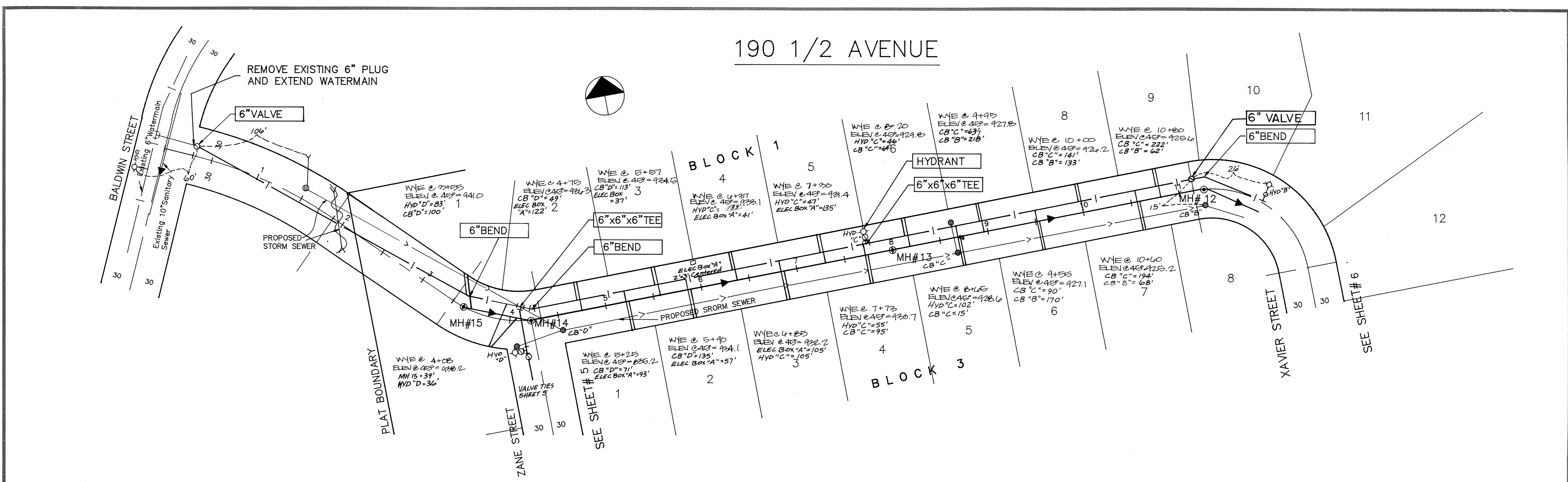



# 190 1/2 AVENUE





**CONSULTING ENGINEERS**  
Maier Stewart & Associates Inc.  
1959 SLOAN PLACE (612) 774-6021 ST. PAUL, MINNESOTA 55117

DATE	DESCRIPTION	DESIGNED

REVISIONS

**CITY OF ELK RIVER**  
SANITARY SEWER AND WATERMAIN  
190 1/2 AVENUE

DATE MAR.1988 SHEET 7 OF 17 SHEETS PROJECT NO. 230-034

S&C PRODUCTS • NEW HOPE, MINNESOTA  
 PRODUCED BY PART NUMBER 6532  
 S&C PRODUCTS • NEW HOPE, MINNESOTA  
 PRODUCED BY PART NUMBER 6532  
 S&C PRODUCTS • NEW HOPE, MINNESOTA  
 PRODUCED BY PART NUMBER 6532  
 S&C PRODUCTS • NEW HOPE, MINNESOTA  
 PRODUCED BY PART NUMBER 6532