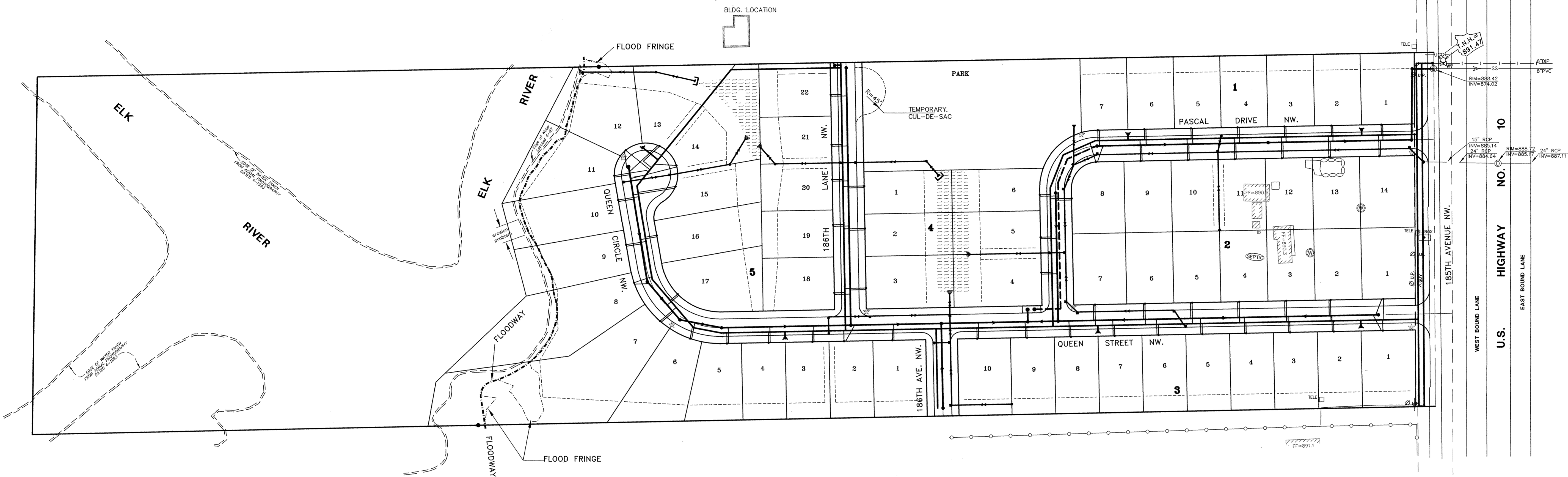


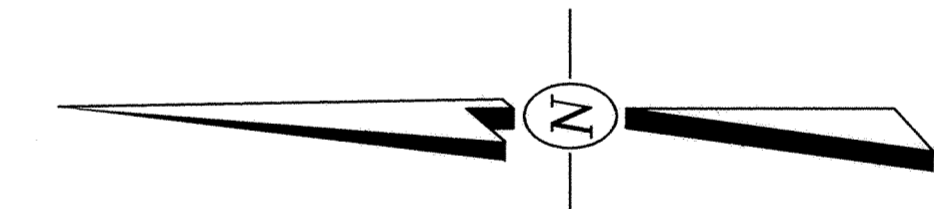
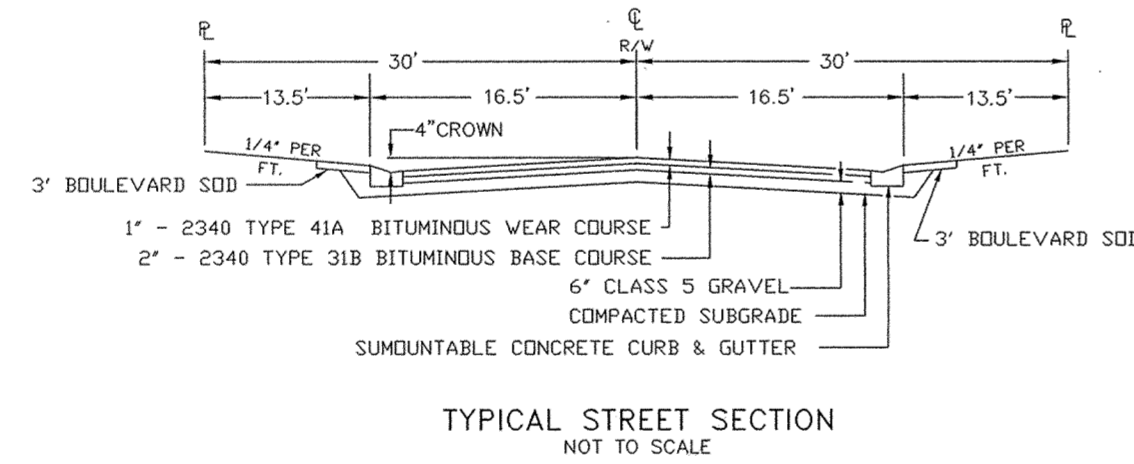
# RIVERPLACE

## SANITARY SEWER, WATERMAIN, STORM SEWER AND STREET CONSTRUCTION PLANS



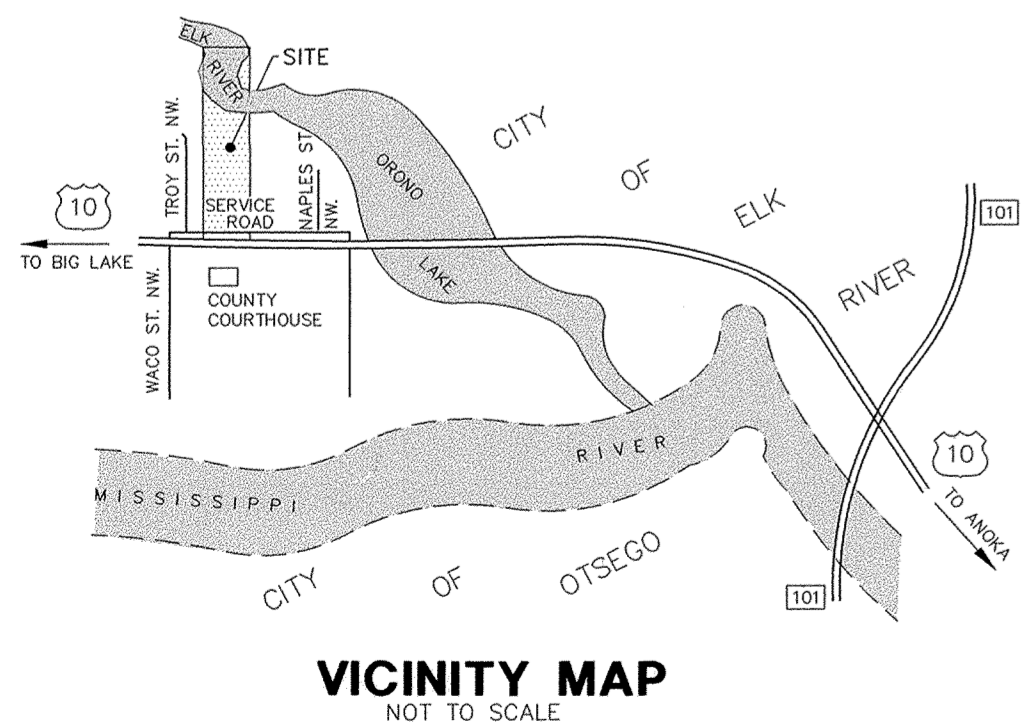
### INDEX

1. COVER SHEET
2. SANITARY & WATERMAIN, QUEEN STREET NW. & QUEEN CIRCLE NW.
3. SANITARY & WATERMAIN, PASCAL DRIVE & QUEEN CIRCLE NW.
4. SANITARY & WATERMAIN, 186TH STREET NW. & 185TH AVENUE NW.
5. SANITARY & WATERMAIN, 186TH AVENUE & EAST PROPERTY LINE
6. STREET & STORM SEWER, QUEEN STREET NW. & QUEEN CIRCLE NW.
7. STREET & STORM SEWER, PASCAL DRIVE & QUEEN CIRCLE NW.
8. STREET & STORM SEWER, 186TH STREET NW. & 185TH AVENUE NW.
9. STREET & STORM SEWER, 186TH AVENUE NW. & EAST PROPERTY LINE



**BENCH MARK:**  
TOP NUT HYDRANT,  
SOUTH SIDE OF  
185TH AVENUE NW &  
SE CORNER OF SITE  
ELEV. = 891.47

DEVELOPER: ROYAL OAKS REALTY  
4196 LEXINGTON AVENUE  
SHOREVIEW, MN 55126  
(612) 483 - 5518



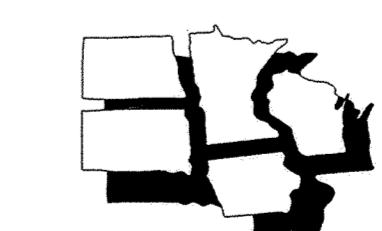
**WARNING:**  
THE LOCATION OF EXISTING UTILITIES SHOWN ARE SHOWN IN AN APPROXIMATE WAY ONLY. THE CONTRACTOR SHALL BE RESPONSIBLE FOR LOCATING AND PROTECTING ALL EXISTING UTILITIES. HE AGREES TO BE FULLY RESPONSIBLE FOR ANY AND ALL DAMAGES ARISING OUT OF HIS FAILURE TO PROPERLY LOCATE AND/OR PRESERVE THEM. ALL EXISTING UTILITIES MAY NOT BE SHOWN

CITY OF ELK RIVER,		DATE: _____
CITY ENGINEER: _____		
REV. NO.	DATE	REVISION
1	5-08-98	STREET X-SEC, WATERMAIN LAYOUT (QUEEN ST)

**RECORD PLAN**  
4-26-99

I hereby certify that this plan, specification or report was prepared by me or under my direct supervision and that I am a duly registered Professional Engineer under the laws of the State of Minnesota.

*Lawrence J. Olson*  
Date 3/31/98 Registration No. 16753



**MIDWEST**  
**Land Surveyors & Civil Engineers, Inc.**  
199 Coon Rapids Blvd.  
Coon Rapids, Mn. 55433  
Ph. 612-786-8909 Fax: 612-786-9208  
Job No. 144-18 Book-Page 135-40 Acad file 144-18P1  
© 1998-Midwest Land Surveyors & Civil Engineers, Inc. - All Rights Reserved