

# COUNTY ROAD NO. 30

NOTE: EXISTING 10" WATERMAIN CROSSES TO NORTH SIDE OF CO. RD. 30 AT EXISTING 10" TEE.

CONNECT TO EX. 10"x10" TEE AND EXTEND AS SHOWN.

VERIFY LOCATION

10"x6" REDUCER

6" VALVE

6"-45° BEND

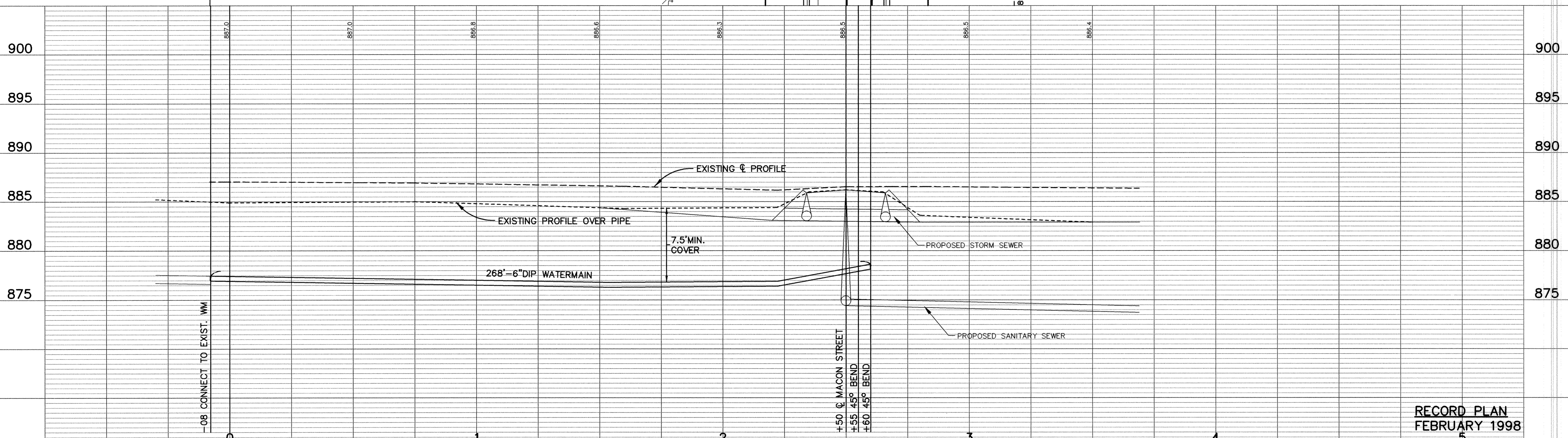
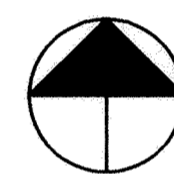
6"-45° BEND

PROPOSED STORM SEWER SEE SHEET 7

SEE SHEET 9

SEE SHEET 7

MACON STREET



RECORD PLAN  
FEBRUARY 1998

ER365-F

I HEREBY CERTIFY THAT THIS PLAN, SPECIFICATION, OR REPORT WAS PREPARED BY ME OR UNDER MY DIRECT SUPERVISION AND THAT I AM A DULY REGISTERED PROFESSIONAL ENGINEER UNDER THE LAWS OF THE STATE OF MINNESOTA.  
*Mark V. Swanson*  
DATE 3/16/98 REG. NO. 19130



1326 ENERGY PARK DRIVE  
ST. PAUL, MINNESOTA 55108  
(612) 644-4389

REVISIONS	DATE	DESCRIPTION

DESIGNED	
CHECKED	
DRAWN	
GRAPHIC SCALE	
0	20
0	5
VERT.	

CITY OF ELK RIVER  
RIVERVIEW DRIVE/MACON STREET  
WATERMAIN CONSTRUCTION  
COUNTY ROAD NO. 30

DATE MAY 1997 SHEET 8 OF 20 SHEETS PROJECT NO. 230-365-20