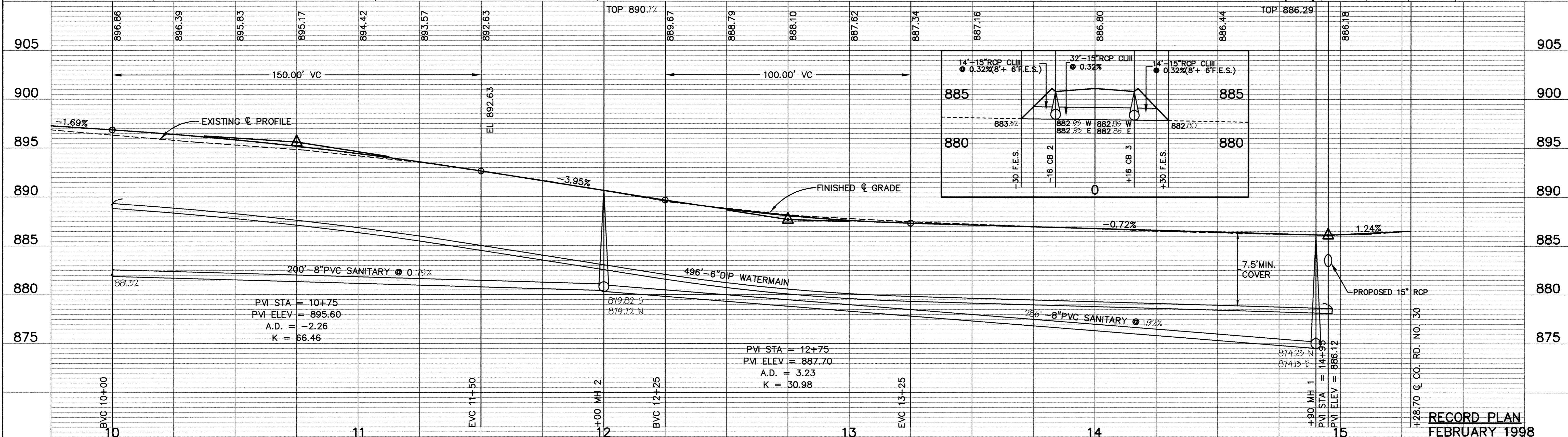


NOTES:
 1. MAIL BOXES SHALL BE TEMPORARILY AND PERMANENTLY RELOCATED AS DIRECTED BY THE ENGINEER.

END CURB AND GUTTER AT STA. 14+95. CONSTRUCT BIT. BERM AND SWALE AS DETERMINED IN THE FIELD.

MILL EXISTING BITUMINOUS SURFACE 1.5" DEEP X 4' WIDE, STRAIGHT LINE CUT, TACK & MATCH EXISTING BITUMINOUS



PVI STA = 10+75
 PVI ELEV = 895.60
 A.D. = -2.26
 K = 66.46

PVI STA = 12+75
 PVI ELEV = 887.70
 A.D. = 3.23
 K = 30.98

7.5' MIN. COVER

RECORD PLAN
 FEBRUARY 1998

I HEREBY CERTIFY THAT THIS PLAN, SPECIFICATION, OR REPORT WAS PREPARED BY ME OR UNDER MY DIRECT SUPERVISION AND THAT I AM A DULY REGISTERED PROFESSIONAL ENGINEER UNDER THE LAWS OF THE STATE OF MINNESOTA.
Mark V. Graham
 DATE 3/14/98 REG. NO. 19130



1326 ENERGY PARK DRIVE
 ST. PAUL, MINNESOTA 55108
 (612) 644-4389

DATE	DESCRIPTION	DESIGNED

CHECKED
 DRAWN
 GRAPHIC SCALE
 0 20
 0 5
 VERT.

CITY OF ELK RIVER
 RIVERVIEW DRIVE/MACON STREET
 SANITARY SEWER, WATERMAIN, STORM SEWER, STREET CONSTRUCTION
 MACON STREET
 DATE MAY 1997 SHEET 7 OF 20 SHEETS PROJECT NO. 230-365-20

DRAWING NUMBER

DRAWING NUMBER

DRAWING NUMBER

DRAWING NUMBER
 RIVER 97