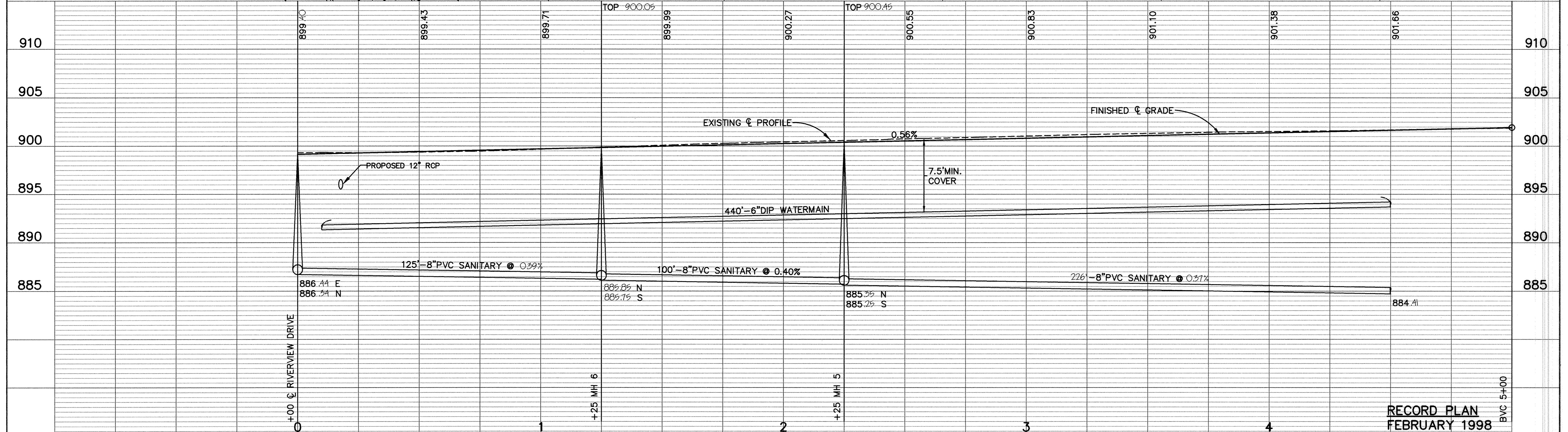
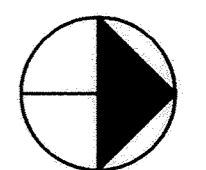


NOTES:
 1. MAIL BOXES SHALL BE TEMPORARILY AND PERMANENTLY RELOCATED AS DIRECTED BY THE ENGINEER.

MACON STREET

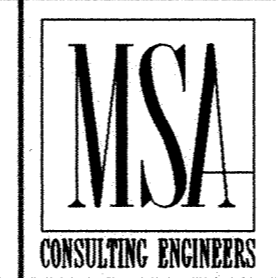
GRANDVIEW 2ND ADDITION

COUNTRY CROSSING FOURTH ADDITION



RECORD PLAN
 FEBRUARY 1998

I HEREBY CERTIFY THAT THIS PLAN, SPECIFICATION, OR REPORT WAS PREPARED BY ME OR UNDER MY DIRECT SUPERVISION AND THAT I AM A DULY REGISTERED PROFESSIONAL ENGINEER UNDER THE LAWS OF THE STATE OF MINNESOTA.
Mark V. Graham
 DATE 3/16/98 REG. NO. 19130



1326 ENERGY PARK DRIVE
 ST. PAUL, MINNESOTA 55108
 (612) 644-4389

| REVISIONS | DATE | DESCRIPTION | DESIGNED | CHECKED | DRAWN |
|-----------|------|-------------|----------|---------|-------|
| | | | | | |

CITY OF ELK RIVER
 RIVERVIEW DRIVE/MACON STREET
 SANITARY SEWER, WATERMAIN, STORM SEWER, STREET CONSTRUCTION
 MACON STREET
 0+00 TO 4+50
 DATE MAY 1997 SHEET 5 OF 20 SHEETS PROJECT NO. 230-365-20