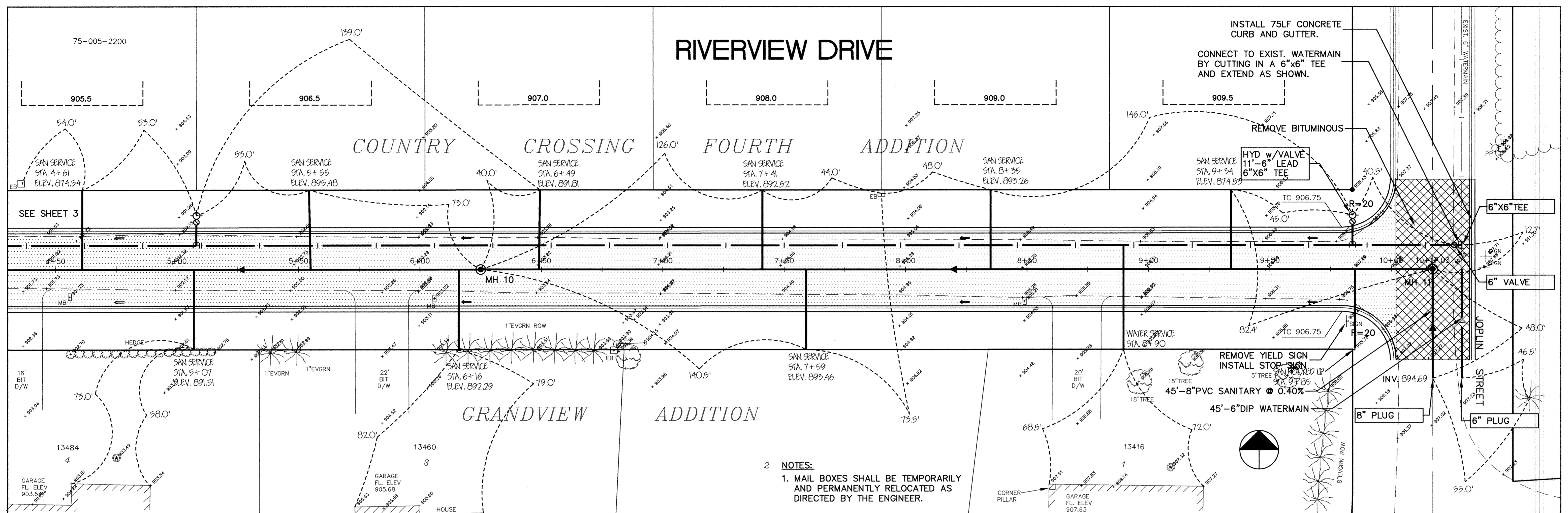


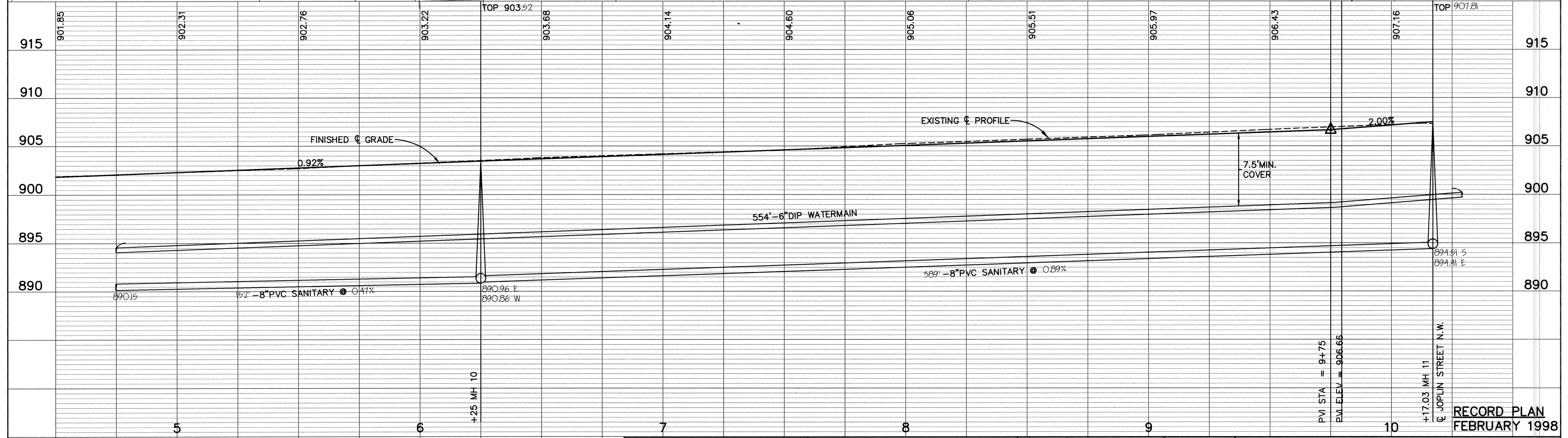
# RIVERVIEW DRIVE

## COUNTRY CROSSING FOURTH ADDITION

## GRANDVIEW ADDITION

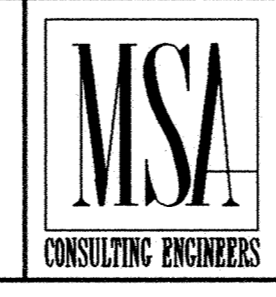


- 2 NOTES:  
 1. MAIL BOXES SHALL BE TEMPORARILY AND PERMANENTLY RELOCATED AS DIRECTED BY THE ENGINEER.



DATE	7/22/97	DESCRIPTION	DESIGNED	CHECKED	DRAWN	GRAPHIC SCALE	VERT. 5	DATE	MAY 1997	SHEET	4	OF	20	SHEETS	PROJECT NO.	230-365-20
	REVISIONS															

I HEREBY CERTIFY THAT THIS PLAN, SPECIFICATION, OR REPORT WAS PREPARED BY ME OR UNDER MY DIRECT SUPERVISION AND THAT I AM A DULY REGISTERED PROFESSIONAL ENGINEER UNDER THE LAWS OF THE STATE OF MINNESOTA.  
 Mark J. Graham  
 DATE 3/16/98 REG. NO. 19130



1326 ENERGY PARK DRIVE  
 ST. PAUL, MINNESOTA 55108  
 (612) 644-4389

CITY OF ELK RIVER  
 RIVERVIEW DRIVE/MACON STREET  
 SANITARY SEWER, WATERMAIN, STORM SEWER, STREET CONSTRUCTION  
 RIVERVIEW DRIVE  
 4+75 TO 10+17.03

RECORD PLAN  
 FEBRUARY 1998