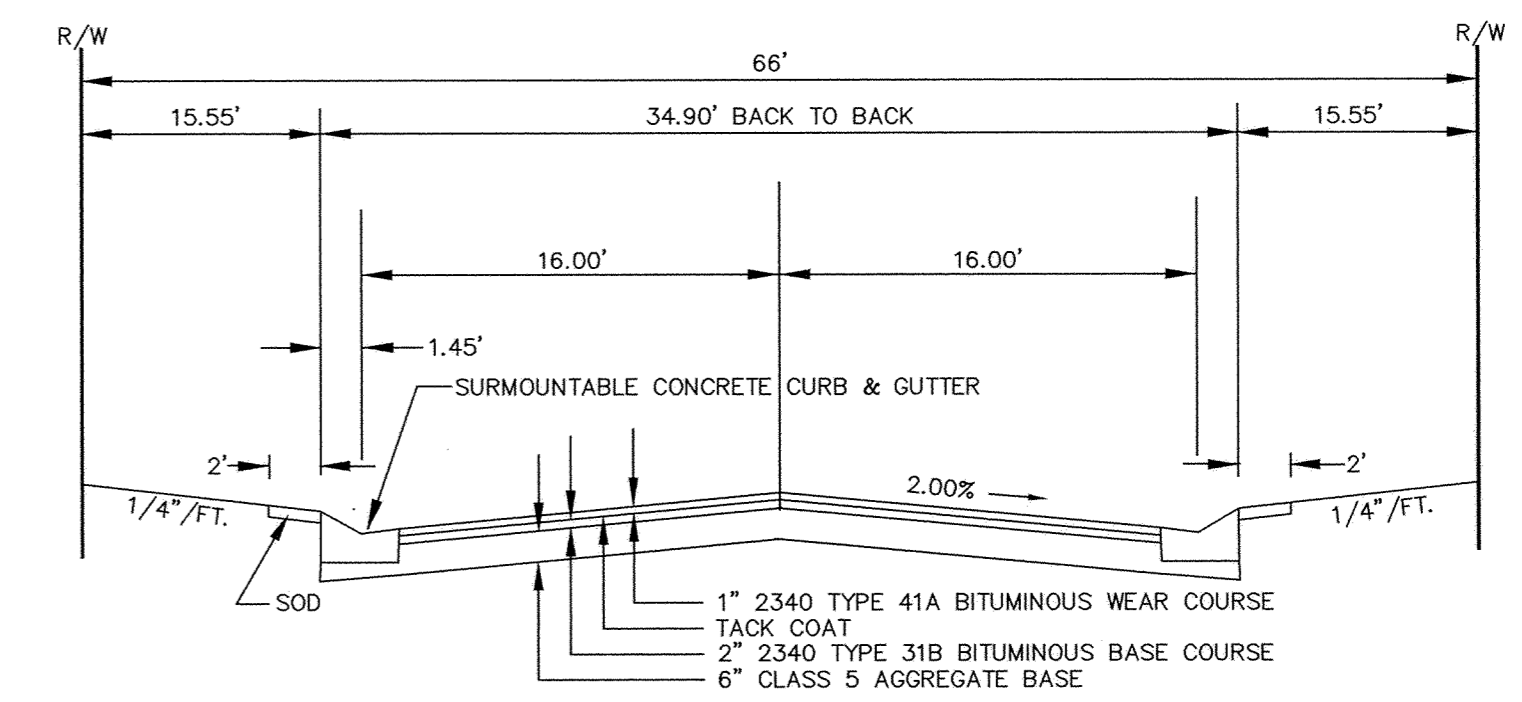
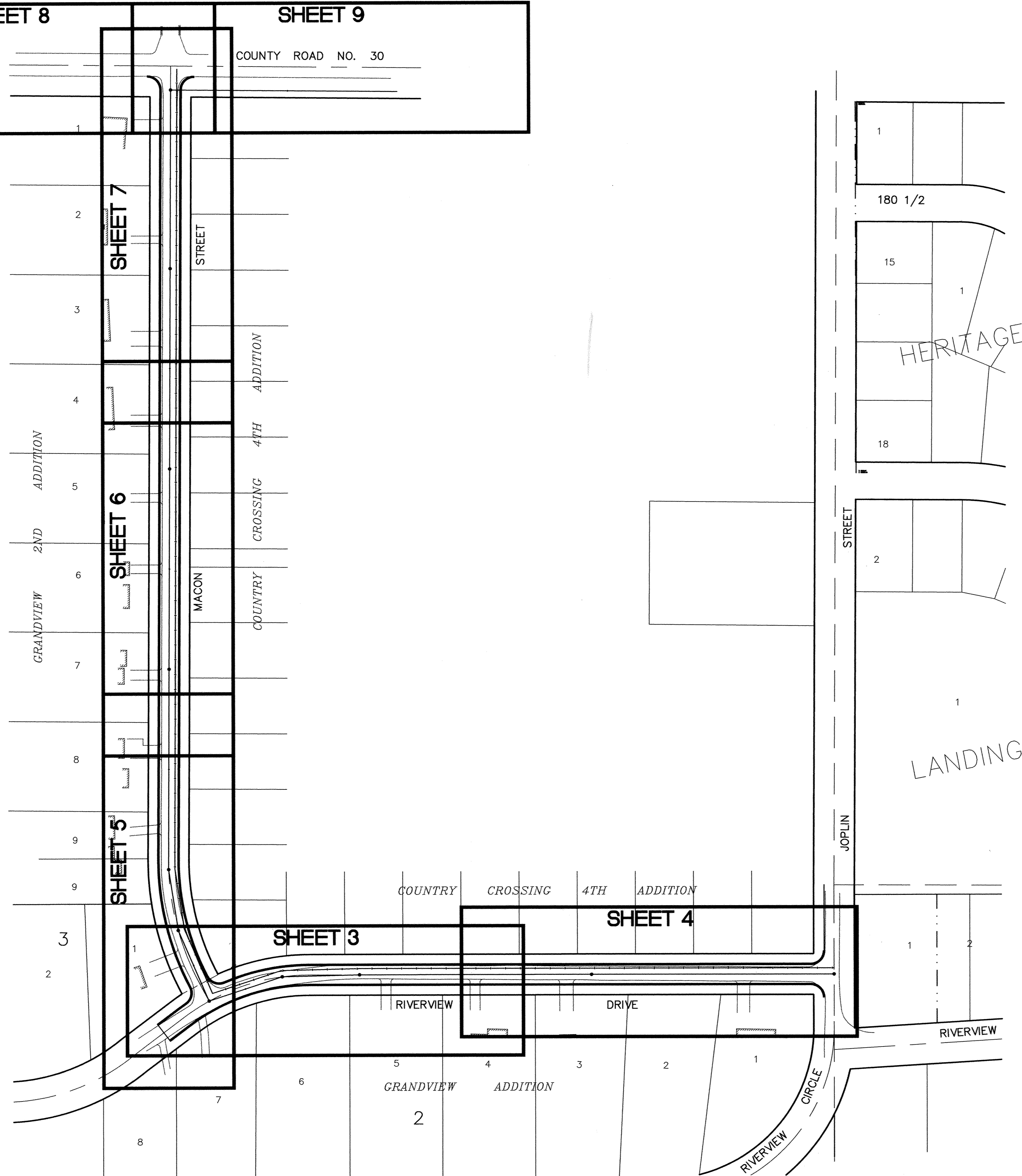


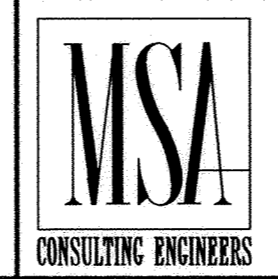
SDACO PRODUCTS • NEW HOPK, MINNESOTA  
REORDER BY PART NUMBER 6522

SHEET 8  
SHEET 9  
COUNTY ROAD NO. 30



TYPICAL STREET SECTION  
NOTE:  
B818 CONCRETE CURB AND GUTTER SHALL BE PLACED AROUND RADII AND AT STORM SEWER STRUCTURES.  
TYPICAL STREET SECTION  
RIVERVIEW DRIVE / MACON STREET

I HEREBY CERTIFY THAT THIS PLAN, SPECIFICATION, OR REPORT WAS PREPARED BY ME OR UNDER MY DIRECT SUPERVISION AND THAT I AM A DULY REGISTERED PROFESSIONAL ENGINEER UNDER THE LAWS OF THE STATE OF MINNESOTA.  
*Paul Graham*  
DATE 6/6/97 REG. NO. 19130



1326 ENERGY PARK DRIVE  
ST. PAUL, MINNESOTA 55108  
(612) 644-4389

REVISIONS	DATE	DESCRIPTION	DESIGNED	MG

CHECKED	MG
DRAWN	EY
GRAPHIC SCALE	
0	20
0	5
VERT.	

CITY OF ELK RIVER  
LOCATION MAP AND STREET SECTION  
RIVERVIEW DRIVE / MACON STREET  
DATE JUNE 1997 SHEET 2 OF 20 SHEETS PROJECT NO. 230-365-20

RECORD PLAN  
FEBRUARY 1998