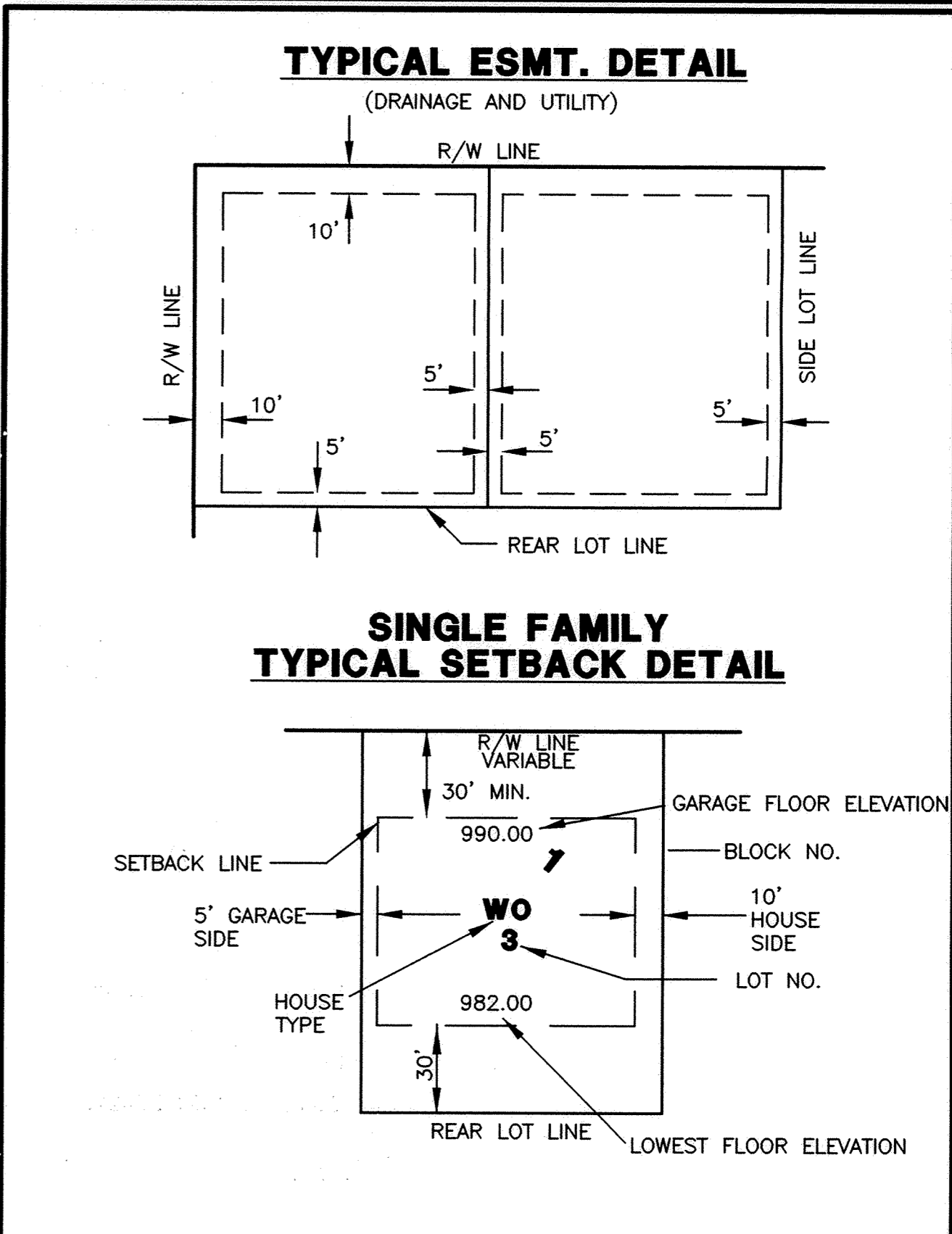
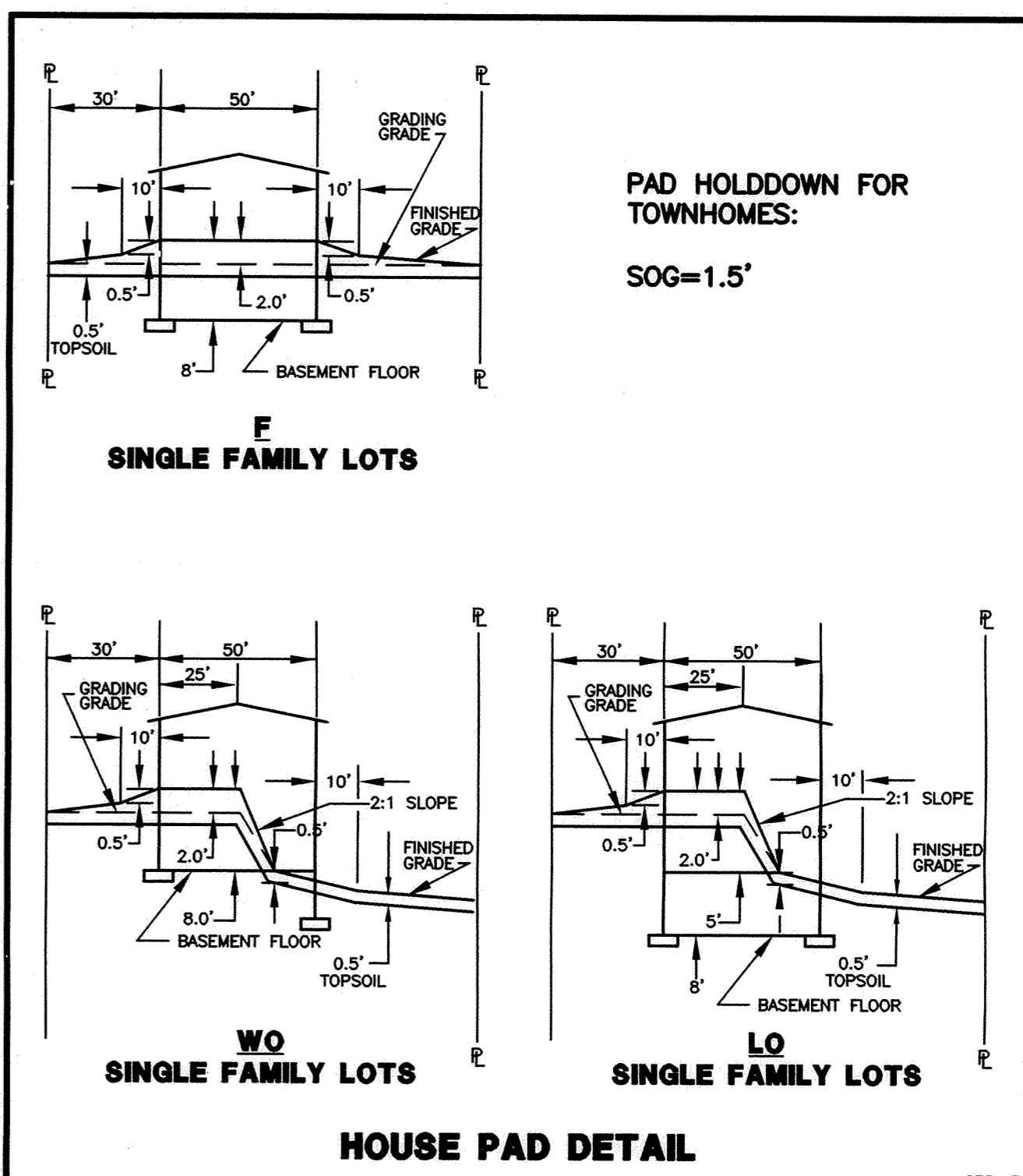
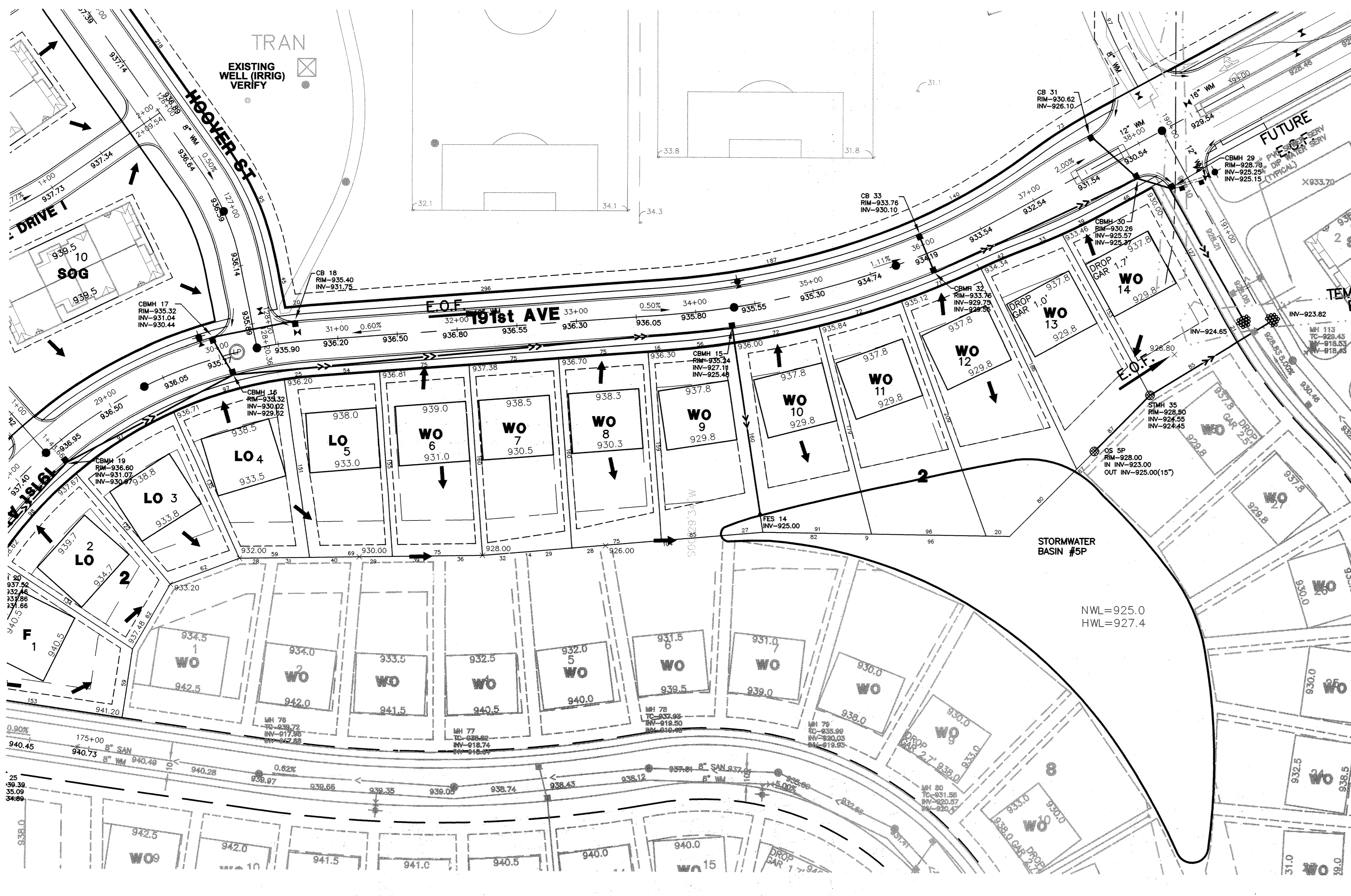
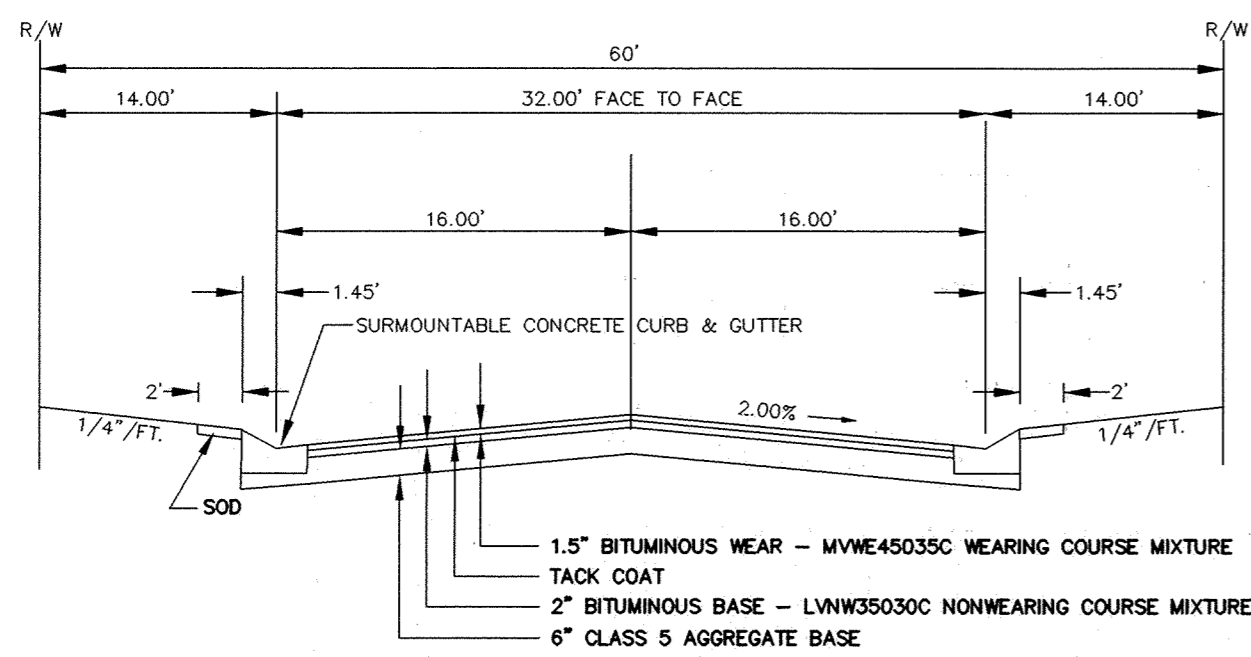


TYPICAL STREET SECTION

NOTE:
B618 CONCRETE CURB AND GUTTER SHALL BE PLACED AROUND RADIUS AND AT STORM SEWER STRUCTURES.
TOP OF CURB IS 0.01' ABOVE DESIGN CENTERLINE GRADE.

NOTE:
IVANHOE/191st SECTION IS 1.5", 2.0", 10.0"



Revisions	Date:	Description:	By:	Date:	Description:	By:
	12-22-05	CITY REVISIONS	BDR			

I hereby certify that this plan was prepared by me or under my direct supervision and that I am a Licensed Professional Engineer under the laws of the State of Minnesota.
Brian D. Robideau
 Brian D. Robideau
 Date: 12/12/05 Reg. No. 43382

Designed By:
 Drawn By:
 Checked By:

Schoell & Madson, Inc.
 Engineering • Surveying • Planning
 www.schoellmadson.com
 10580 Wayzata Boulevard, Suite 1
 Minneapolis, Minnesota 55305-1525
 phone: (952) 546-7601 - fax: (952) 546-9065
 554 Third Street NW, Suite 100
 Elk River, Minnesota 55330-1409
 phone: (763) 241-0108 - fax: (952) 546-9065

Client:
Orrin Thompson Homes
 935 East Wayzata Boulevard
 Wayzata, Minnesota 55391
 19521 249-3076

Project Name/Location:
River Park
 Elk River, Minnesota
 Sheet Title:
DEVELOPMENT PLAN

Date:
12/12/05
 Sheet:
DEV2