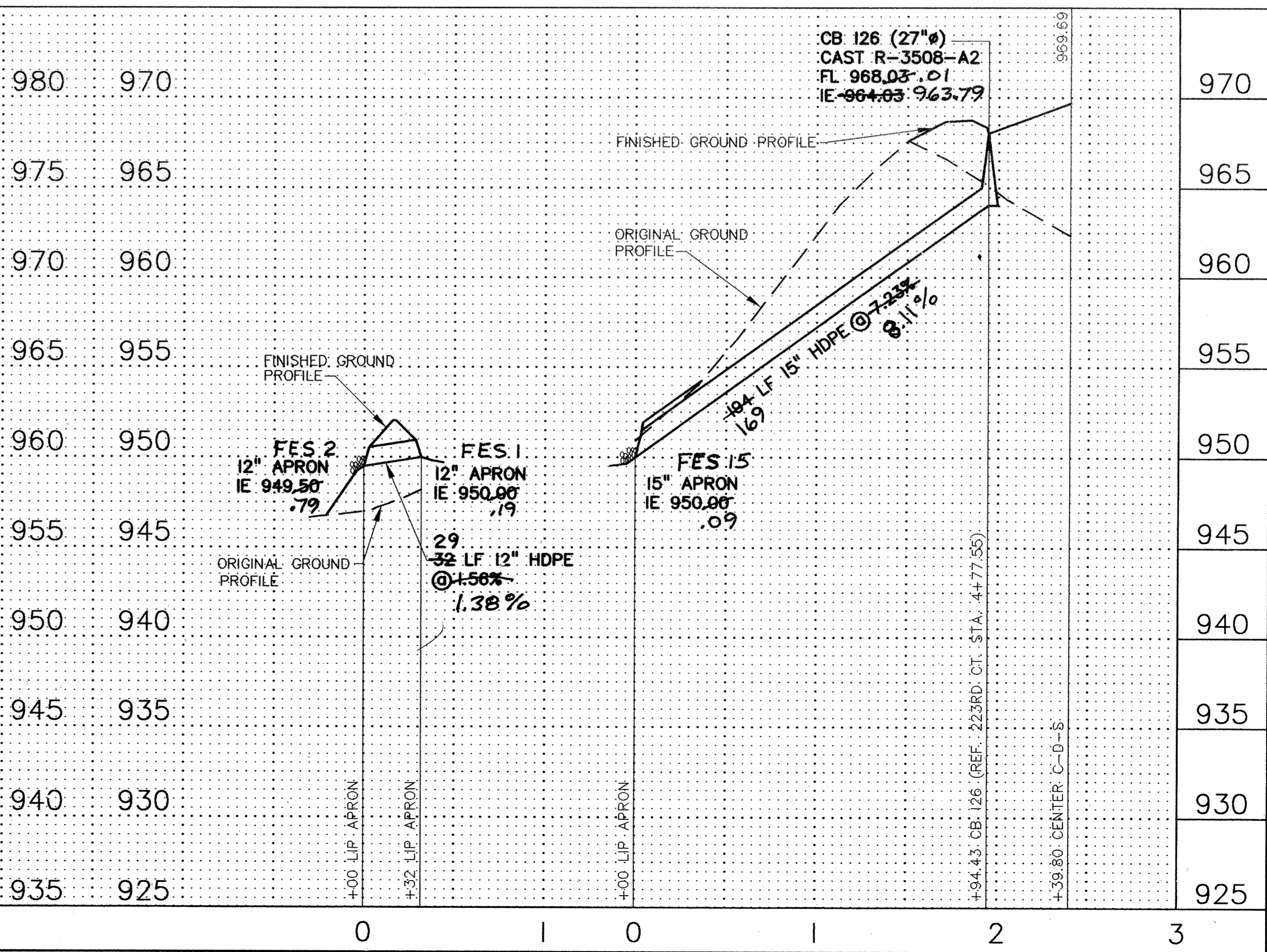
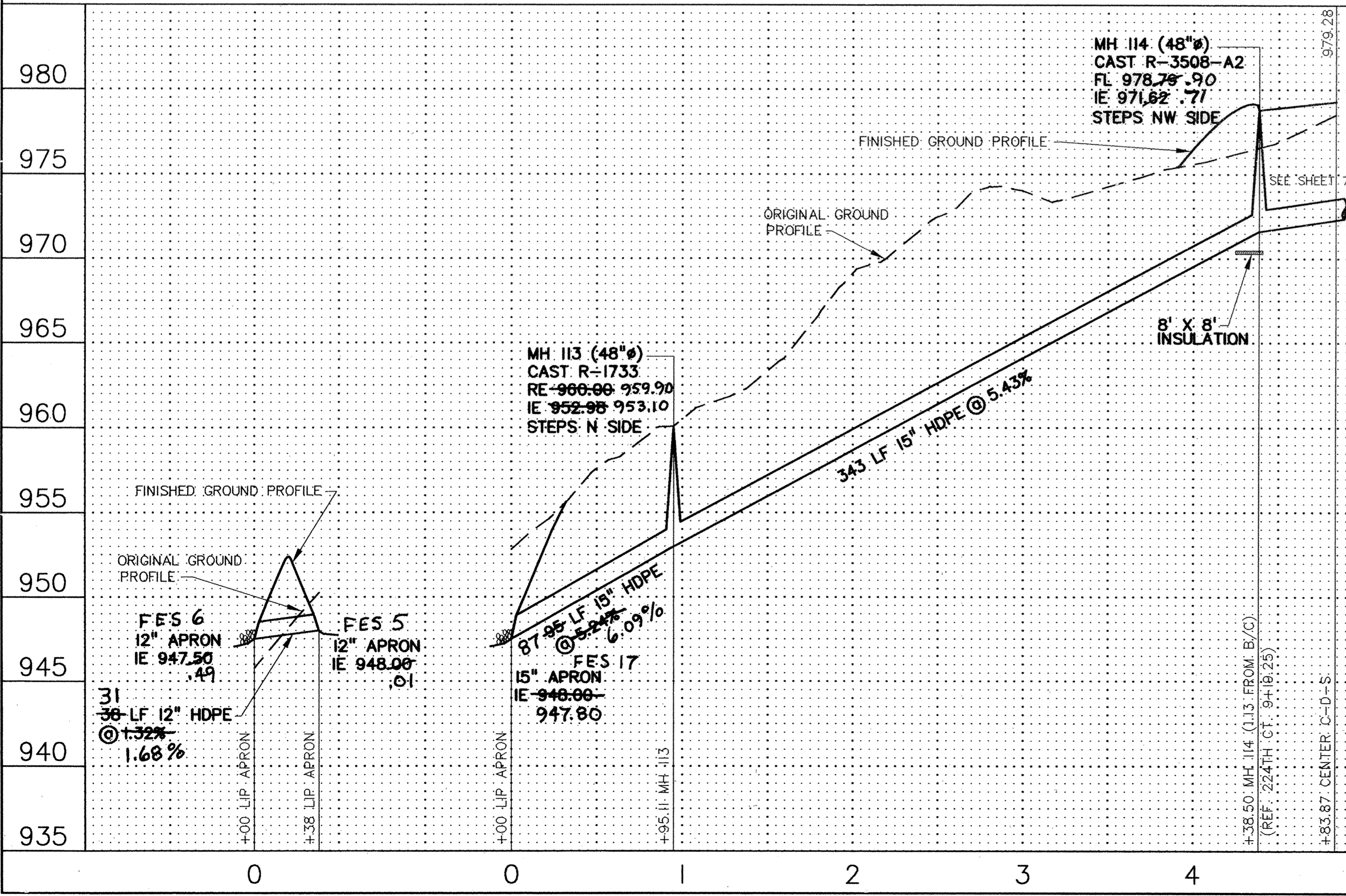
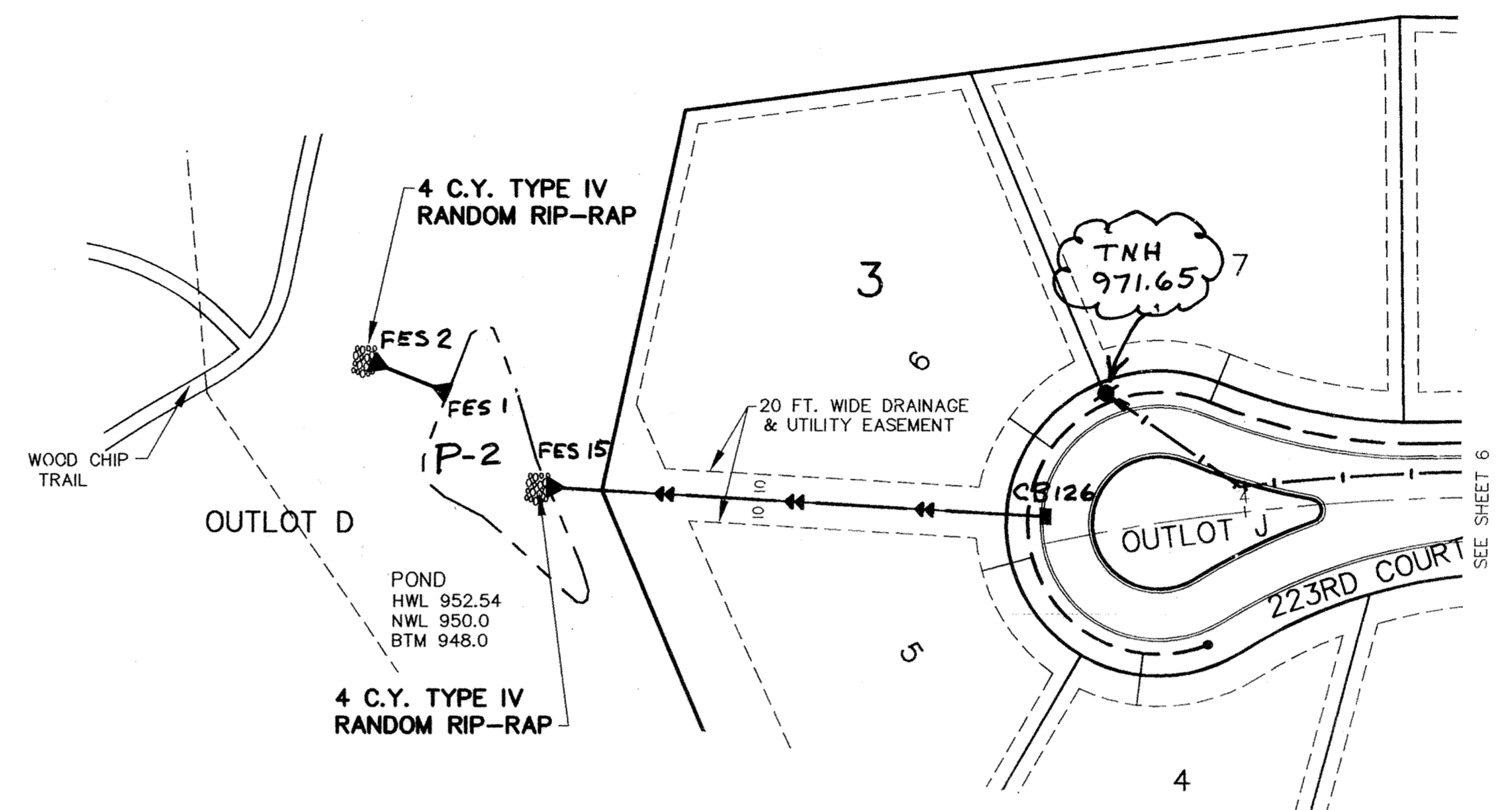
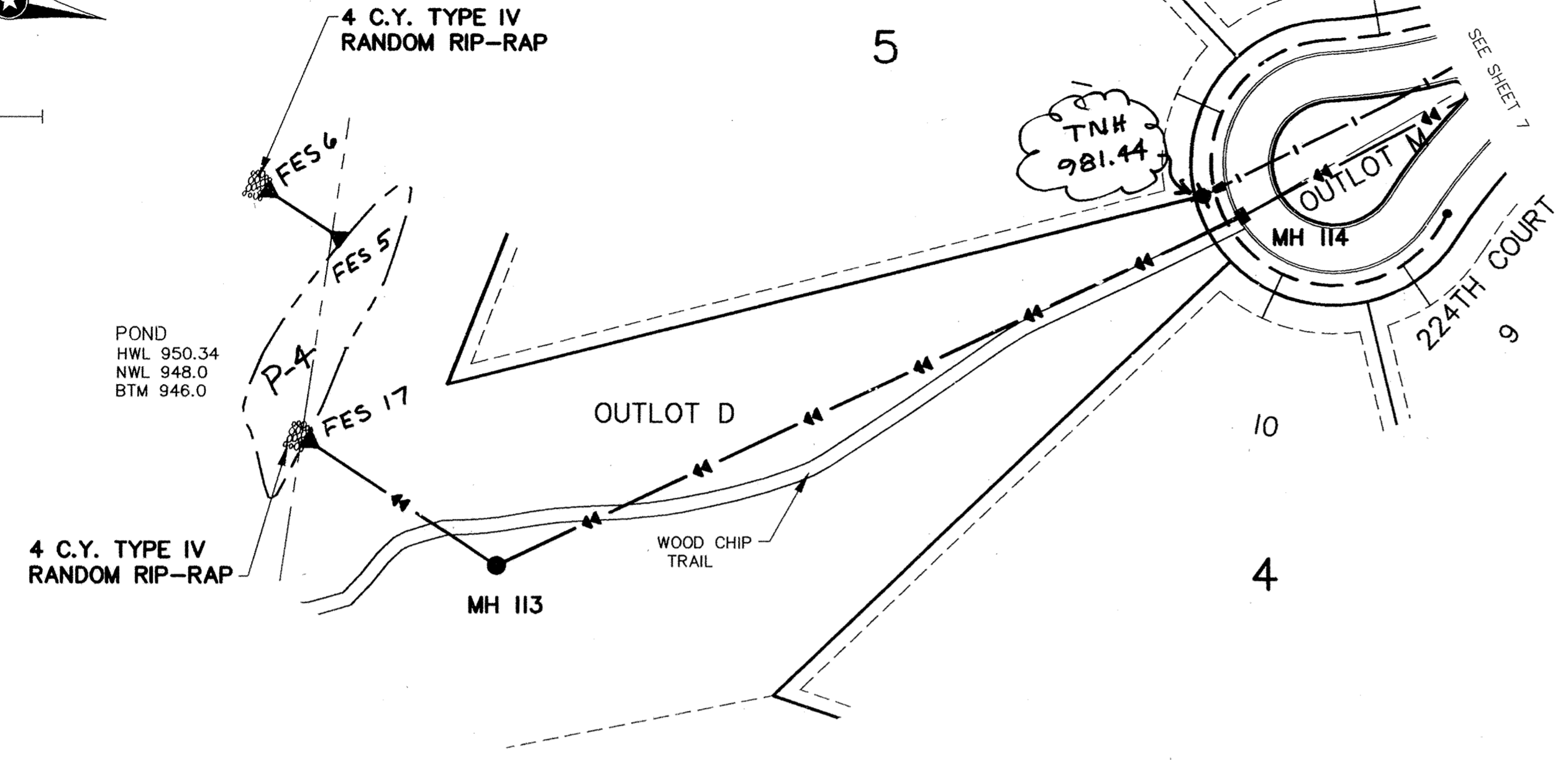
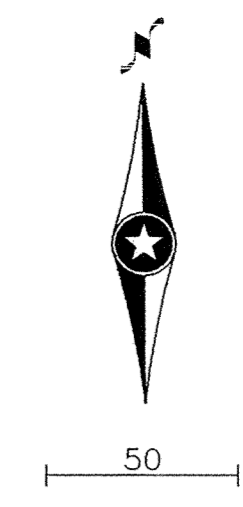


STORM SEWER EASEMENTS

RECORD DRAWINGS



REV. NO.	DATE	DESCRIPTION
1	5/9/01	CITY COMMENTS
2	1/18/05	RECORD DRAWINGS
3		

I hereby certify that this plan, specification, or report was prepared by me, my duly Licensed Professional Engineer under the laws of the state of Minnesota.
 Signature: *[Signature]*
 Date: 4/9/01 Reg. No.: 26777
 DWG FILE: 12STORM
 TEXT FILE: NONE
 FILE NO.: 7918.10-03

John Oliver & Associates, Inc.
 Civil Engineering, Land Surveying, Land Planning
 500 Dodge Avenue
 Elk River, Minnesota 55330
 763-441-2072 FAX 763-441-5685
 Offices in: Elk River, Burnsville and Brooklyn Park, Minnesota

THE RIDGES OF RICE LAKE
 ELK RIVER, MN
DYNAMICS DESIGN & LAND CO.
 STREET, SAN. SEWER, STORM SEWER & WATERMAIN CONSTRUCTION PLAN
STORM SEWER EASEMENTS

SHEET NO. 12 OF 16