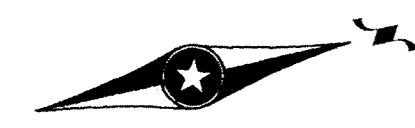
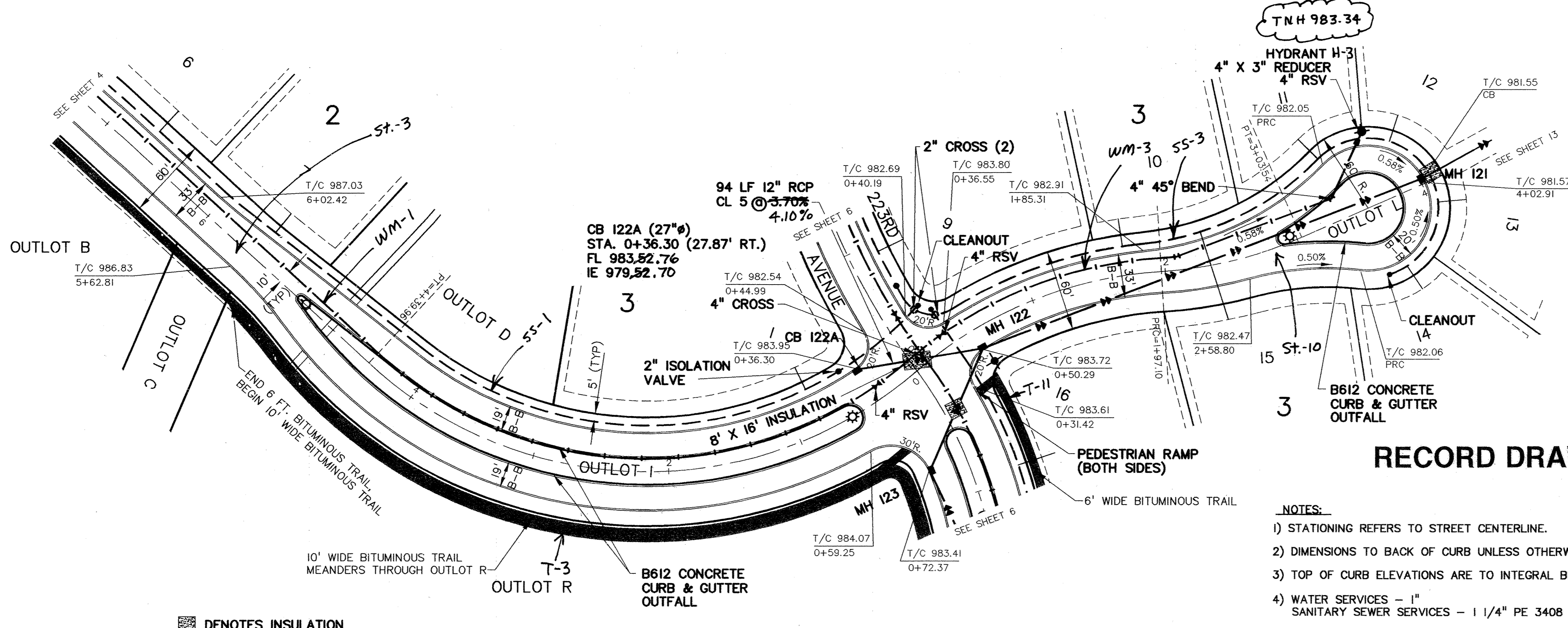


WATSON STREET

WATSON CIRCLE



50



STREET SIGN LEGEND

- ★ STREET NAME--(CITY TYP.)
- ⊙ PROPOSED STREET LIGHT
- ⊙ PROPOSED TRAFFIC SIGN STOP RI-1 (CITY TYP.)

■ DENOTES INSULATION

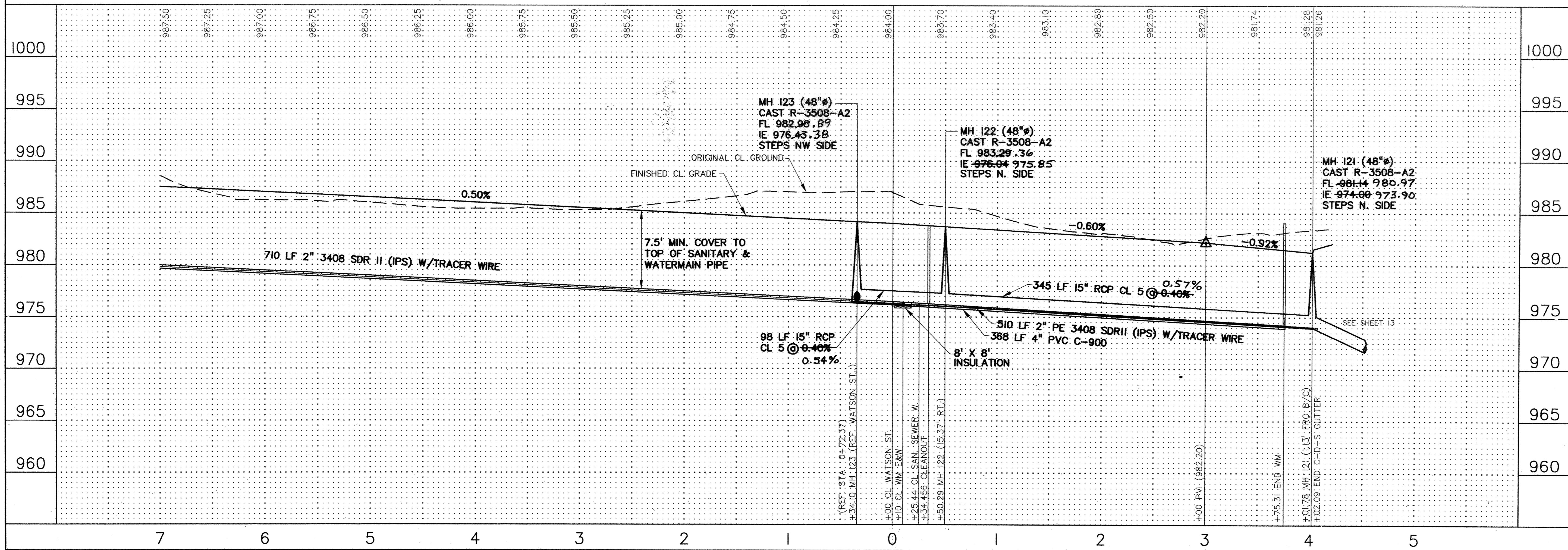
RECORD DRAWINGS

- NOTES:**
- 1) STATIONING REFERS TO STREET CENTERLINE.
 - 2) DIMENSIONS TO BACK OF CURB UNLESS OTHERWISE NOTED.
 - 3) TOP OF CURB ELEVATIONS ARE TO INTEGRAL BITUMINOUS BERM SECTION.
 - 4) WATER SERVICES - 1" SANITARY SEWER SERVICES - 1 1/4" PE 3408 SDR II (IPS)

REV. NO.	DATE	DESCRIPTION
1	5/1/01	ADDED CB 122A
2	5/19/01	CITY COMMENTS
3	1/18/05	RECORD DRAWINGS

DATE: 4/6/01
 DESIGN BY: JK/BM
 DRAWN BY: BJC
 CHECKED BY: JK/BM
 DWG FILE: SWATSON222
 TEXT FILE: NONE
 FILE NO.: 7918.10-03

I hereby certify that this plan, specification, or report was prepared by me or under my direct supervision and that I am a duly Licensed Professional Engineer under the laws of the state of Minnesota.
 Signature: *John Oliver*
 Date: 4/6/01 Reg. No. 26777



John Oliver & Associates, Inc.
 Civil Engineering, Land Surveying, Land Planning
 580 Dodge Avenue
 Elk River, Minnesota 55330
 763-441-2072 FAX 763-441-5665
 Offices in: Elk River, Burnsville and Brooklyn Park, Minnesota

THE RIDGES OF RICE LAKE
 ELK RIVER, MN
DYNAMICS DESIGN & LAND CO.
 STREET, SAN. SEWER, STORM SEWER &
 WATERMAIN CONSTRUCTION PLAN
 WATSON ST./WATSON CIRCLE

SHEET NO. **3** OF **16**