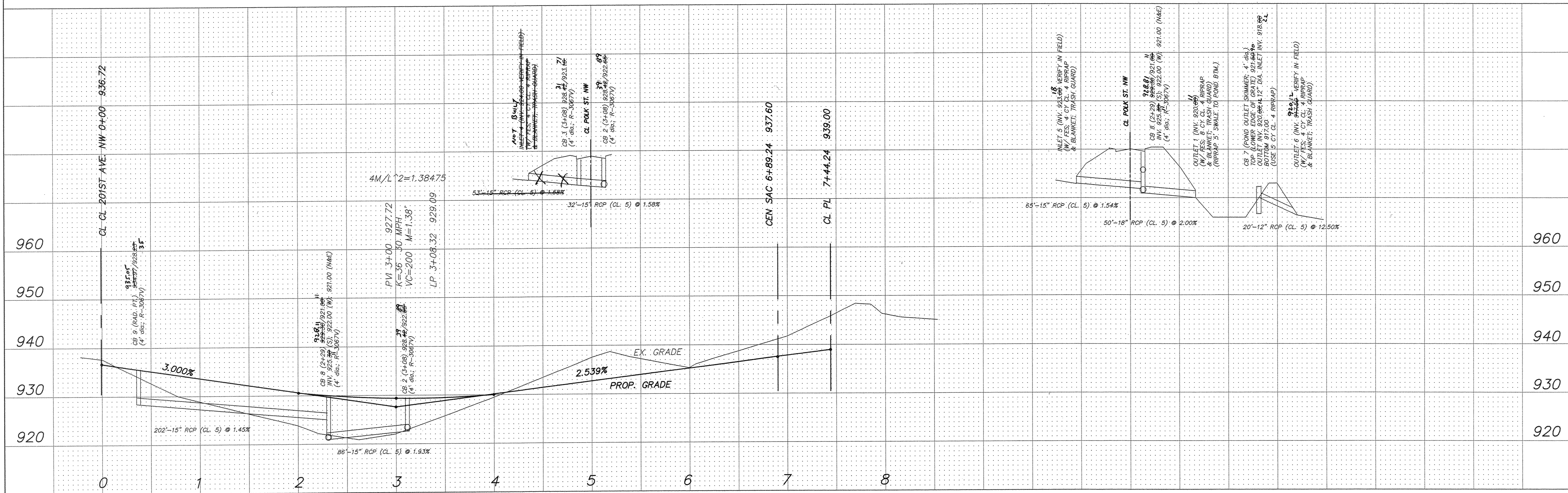
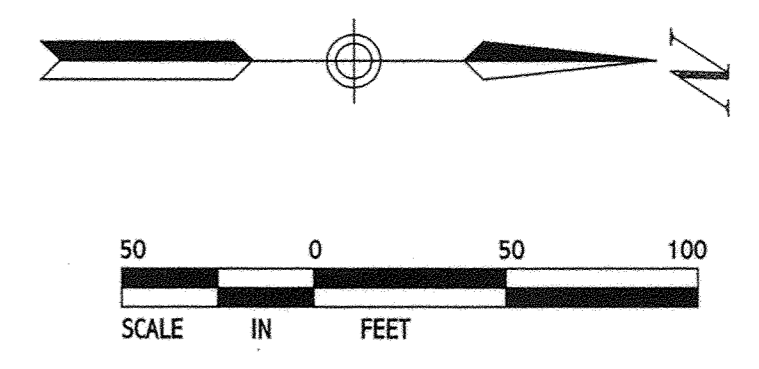


POLK ST. NW



STORM SEWER & STREET PLAN

PRESERVE ESTATES
ELK RIVER, MINNESOTA

DESIGNED: P.M.K.
DRAWN: M.A.L.
CHECKED: P.M.K.

REVISIONS:
10/11/99 Revise per City Engineer
11/23/99 Revise storm
5/19/00 Recheck (Drawn: JS)

I hereby certify that this plan or report was prepared by me, or under my direct supervision, and I am a duly Licensed Professional Engineer under the laws of the State of Minnesota.

Peter J. Knoebbe
Date: 11/3/99 Reg. No. 14844

TERRA ENGINEERING, INC.
6001 Glenwood Ave.
Minneapolis, MN 55422
(612-593-9325)

Civil Engineering - Land Planning - Consulting

SHEET NO. 4