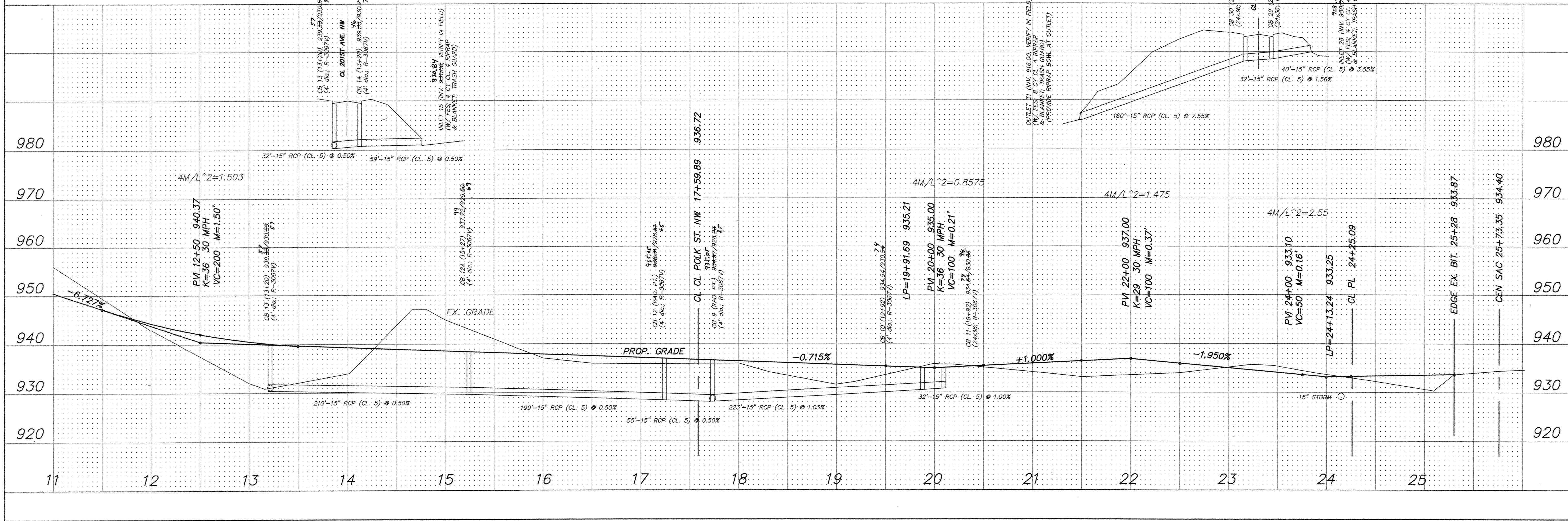
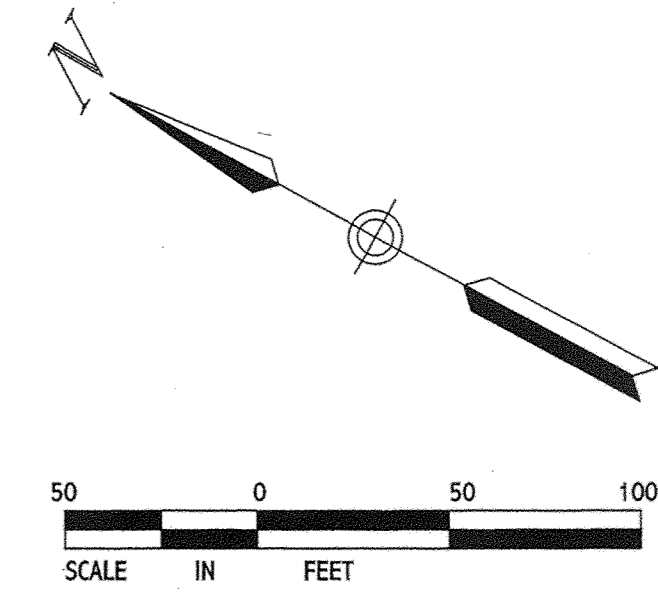


SEE SHEET 4

SEE SHEET 2



<p><b>TERRA ENGINEERING, INC.</b> 6001 Glenwood Ave. Minneapolis, MN 55422 (612-533-8325)</p>	
<p>DESIGNED DRAWN CHECKED</p>	<p>P.J.K. H.A.L. P.J.K.</p>
<p>REVISIONS 10/11/99 Revise per City Engineer review 11/2/99 Revise storm &amp; street 22+00 - 25+30 1/19/00 Revise storm &amp; street 22+00 - 25+30</p>	
<p>I hereby certify that this plan or report was prepared by me, or under my direct supervision, and that I am a duly Registered Professional Engineer in the State of Minnesota.</p>	
<p><i>Peter J. Knaoble</i> Peter J. Knaoble Date: 11/5/99 Reg. No. 14844</p>	
<p><b>STORM SEWER &amp; STREET PLAN</b></p>	
<p><b>PRESERVE ESTATES</b> ELK RIVER, MINNESOTA</p>	
DATE	9/30/99
PROJECT NO.	98-116
SHEET NO.	3