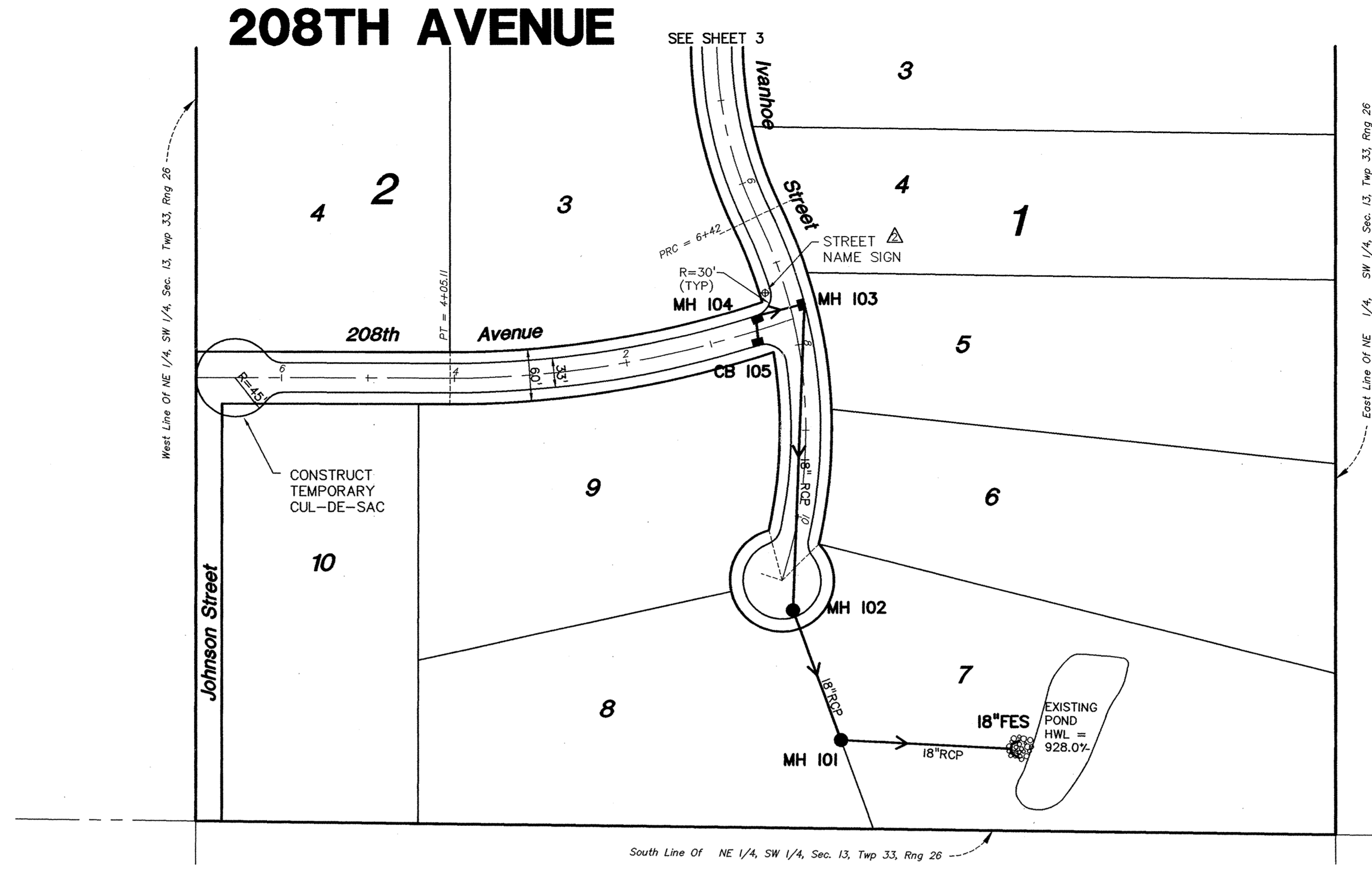
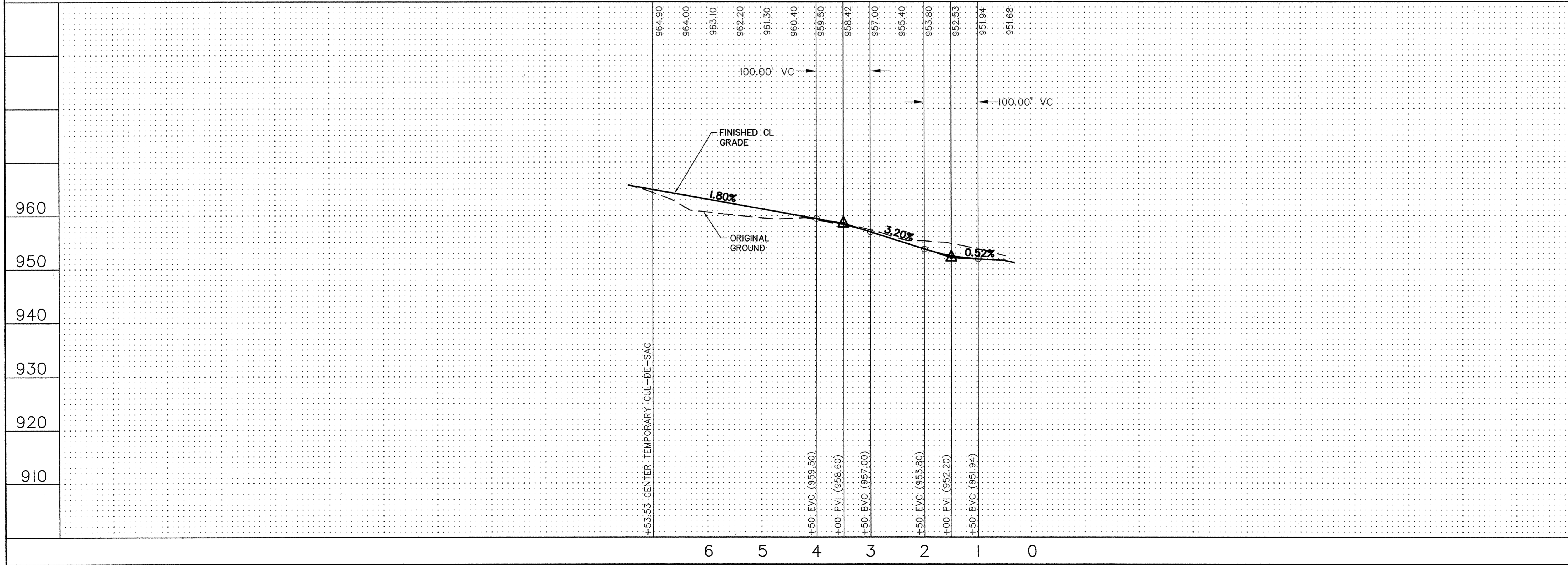


RECORD DRAWINGS

PRIME CONTRACTOR/STORM SEWER: BRENTESON CONSTRUCTION CO.
 STREETS: BAUERLY BROS. COMPANIES
 INSPECTION: RALPH BADER, MSA CONSULTING ENGINEERS
 SURVEY: JOHN OLIVER & ASSOCIATES, INC.
 EARTHWORK: BRENTESON CONSTRUCTION CO.
 RECORD DRAWINGS: FRED FRITSCHER, JOHN OLIVER & ASSOCIATES, INC.
 CONSTRUCTED: 1996



NOTE: CENTERLINE STREET ELEVATIONS WERE NOT SHOT AFTER CONSTRUCTION.



REV. NO.	DATE	DESCRIPTION
1	7/8/96	PROFIL ELEV CORRECTION
2	7/17/96	CASTING TYPE & SIGNS
3	10/18/96	RECORD DRAWINGS

I hereby certify that this plan was prepared by me or under my direct supervision and that I am a duly Registered Professional Engineer under the laws of the State of Minnesota.

Signed: *Greg A. Blum*
 Date: 6/28/96 Reg. No. 12699

John Oliver & Associates, Inc.
 Civil Engineering, Land Surveying, Land Planning
 580 Dodge Avenue
 Elk River, Minnesota 55330
 (612)441-2072 (FAX)441-5665

201 W. Translators Trail, Suite 200
 Elk River, Minnesota 55337
 (612)894-3046 (FAX)894-3049

PHEASANT RUN
 ELK RIVER, MN
 For:
 W.J.C. DEVELOPMENT CORP.
 Profile for 208th Avenue

SHEET NO. 4 OF 5

1032