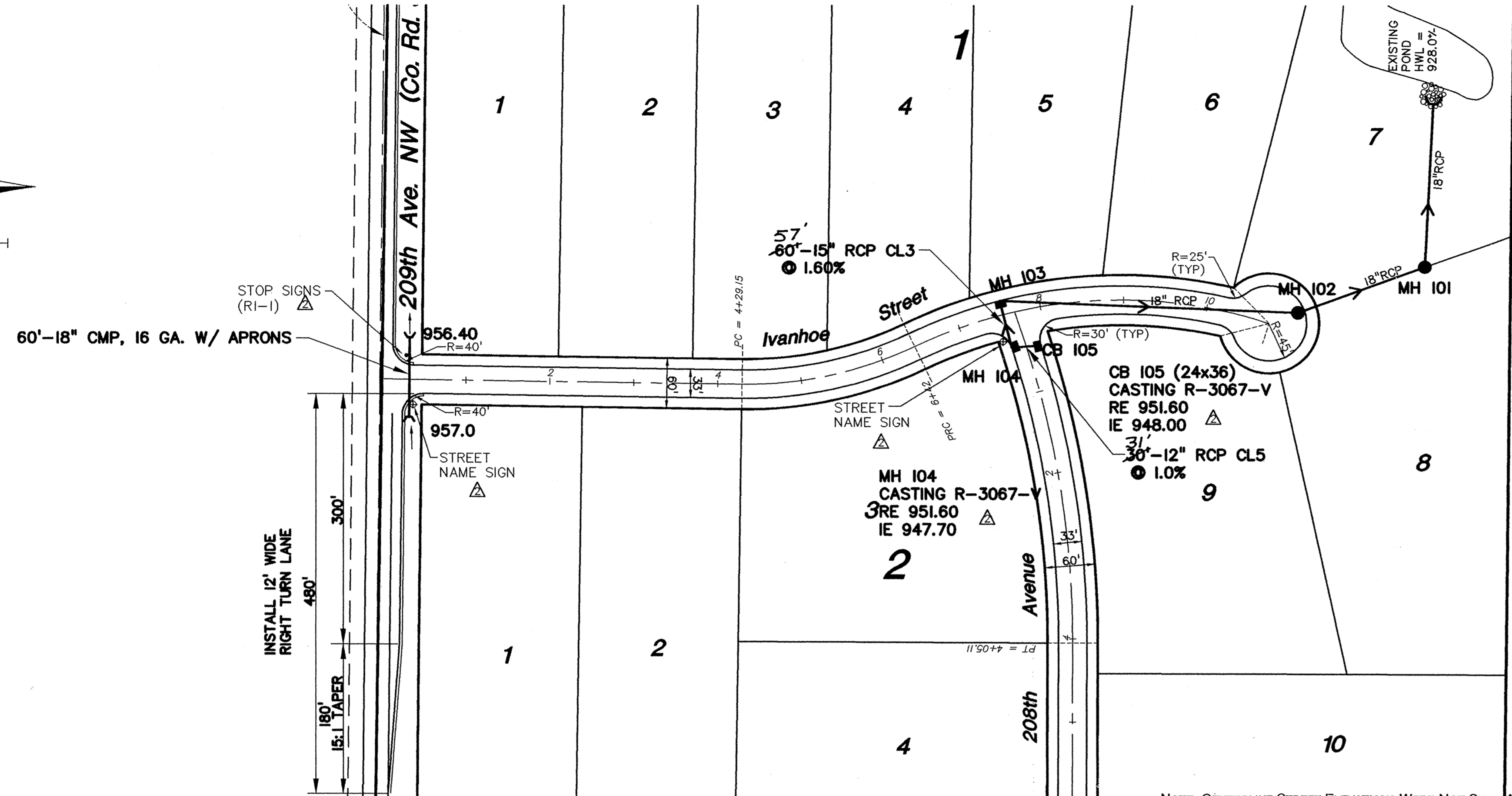
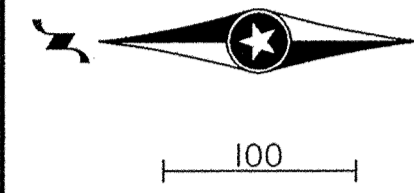


# IVANHOE STREET



## RECORD DRAWINGS

PRIME CONTRACTOR/STORM SEWER: BRENTESON CONSTRUCTION CO.  
 STREETS: BAUERLY BROS. COMPANIES  
 INSPECTION: RALPH BADER, MSA CONSULTING ENGINEERS  
 SURVEY: JOHN OLIVER & ASSOCIATES, INC.  
 EARTHWORK: BRENTESON CONSTRUCTION CO.  
 RECORD DRAWINGS: FRED FRITSCHEL, JOHN OLIVER & ASSOCIATES, INC.  
 CONSTRUCTED: 1996

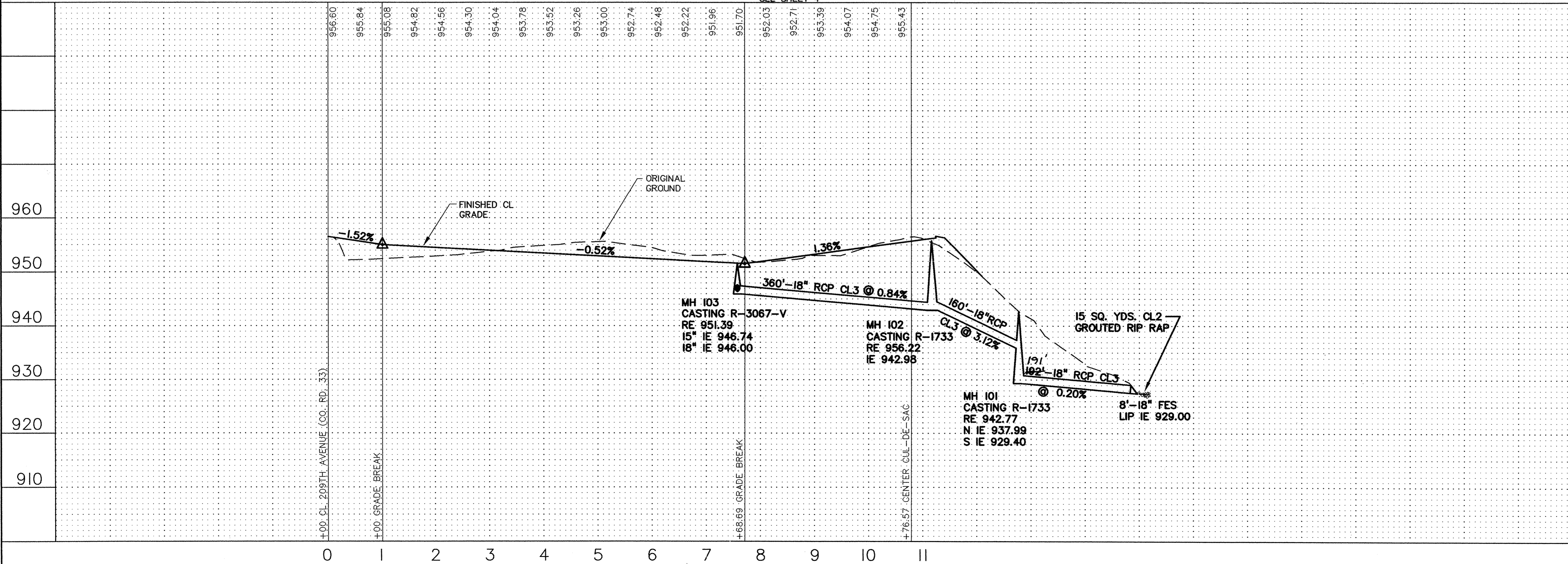
REV. NO.	DATE	DESCRIPTION
1	7/8/96	PROFILE ELEV. CORRECTION
2	7/17/96	CASTING TYPE / SIGNS
3	10/18/96	RECORD DRAWINGS

DATE:	6/28/96
DESIGN BY:	TM, TEL
DRAWN BY:	TGL
CHECKED BY:	TM
DWG FILE:	STR-IVAN
TEXT FILE:	NONE
FILE NO.:	7251.10

I hereby certify that this plan was prepared by me or under my direct supervision and that I am a duly Registered Professional Engineer under the laws of the State of Minnesota.

Signed: *Ray J. Hanson*  
 Date: 6/28/96 Reg. No. 12699



**John Oliver & Associates, Inc.**  
 Civil Engineering, Land Surveying, Land Planning  
 580 Dodge Avenue  
 Elk River, Minnesota 55330  
 (612)441-2072 (FAX)441-5665

**For:**  
**W.J.C. DEVELOPMENT CORP.**  
 Profile for Ivanhoe Street

SHEET NO. 3 OF 5