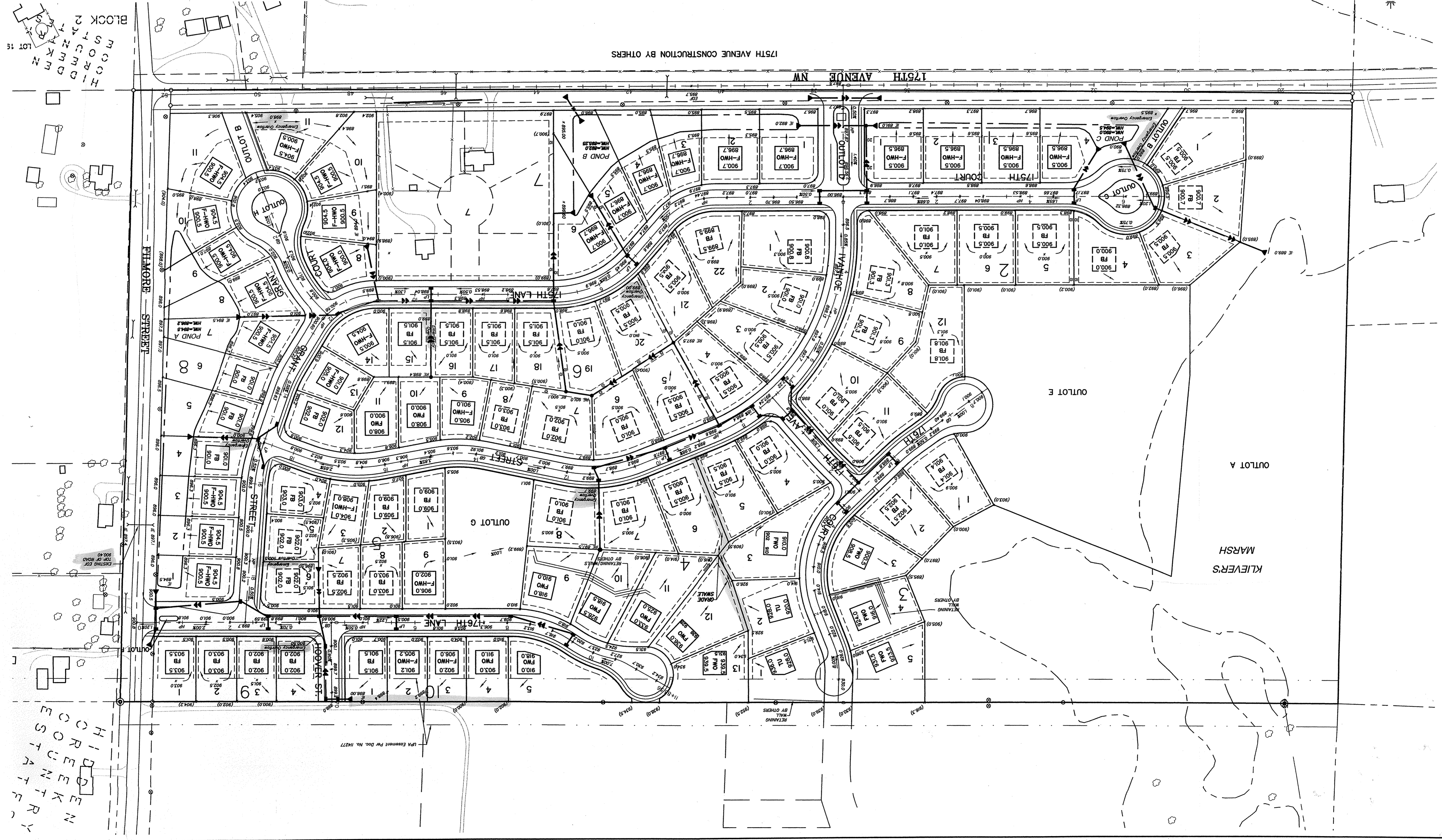


APPROVED
9/30/02 [Signature]
 Houtman E. Green Co.
 Surveyors & Surveyors



SHEET NO. OF
DYNAMIC'S DESIGN & LAND COMPANY
 DEVELOPMENT PLAN
PARK POINTE
 ELK RIVER, MN

John Oliver & Associates, Inc.
 Civil Engineering, Land Surveying, Land Planning
 580 Dodge Avenue
 Elk River, Minnesota 55330
 763-441-2072 FAX 763-441-5665
 Offices: Elk River, Burnsville & Brooklyn Center, Minnesota

I hereby certify that this plan, specification, or report was prepared by me or under my direct supervision and that I am a Licensed Professional Engineer under the laws of the State of Minnesota.
 Signed: [Signature]
 Date: 8/5/02 Reg. No. 20333

REV	DATE	DESCRIPTION
1	1/22/02	
2	8/21/02	
3	9/25/02	

DATE: 1/22/02
 DESIGN BY: TGI
 DRAWN BY: TGI
 CHECKED BY: TM
 DWG: 8058F-GRD.DWG
 TEXT: NONE
 FILE NO.: 8058.10-03