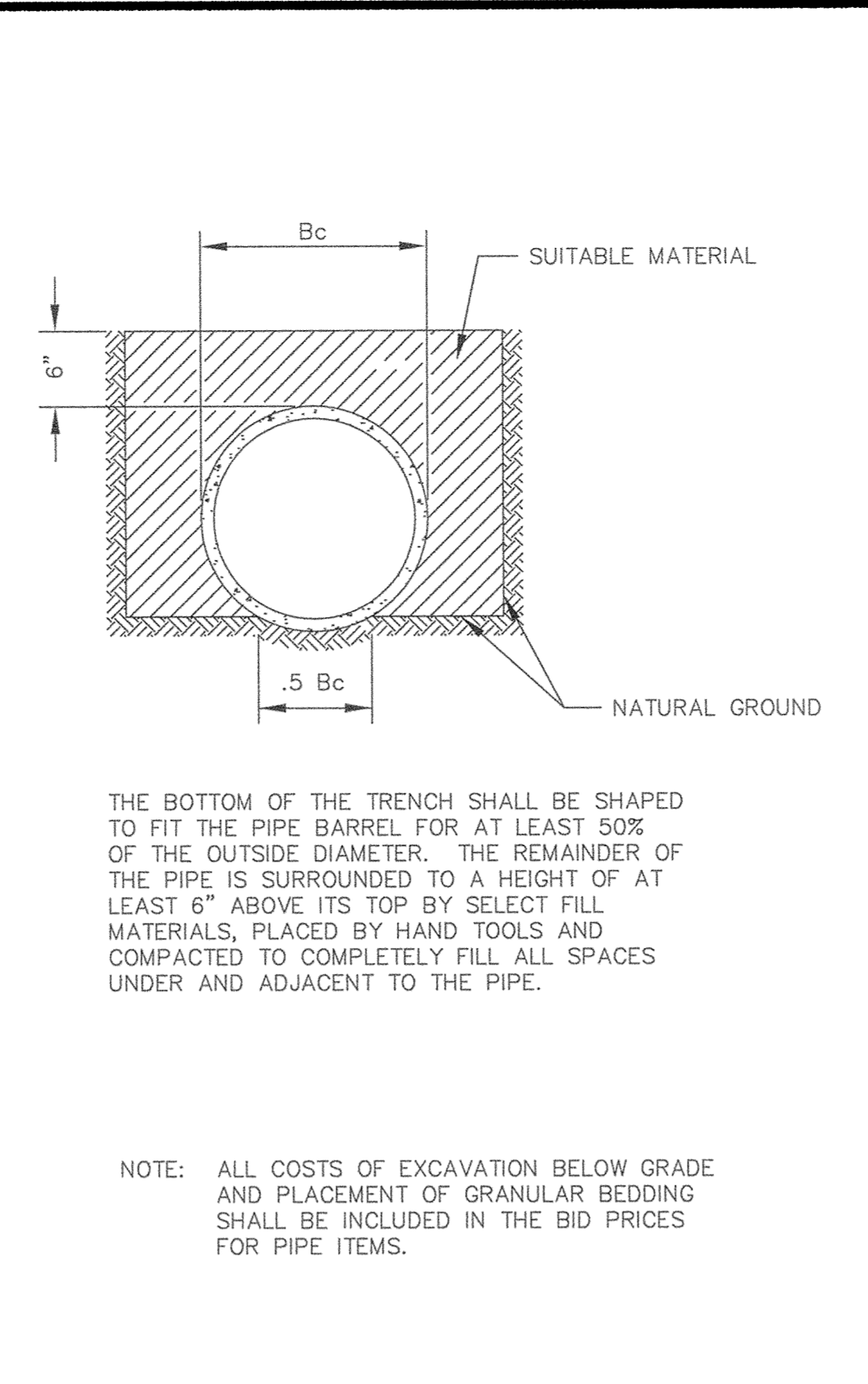
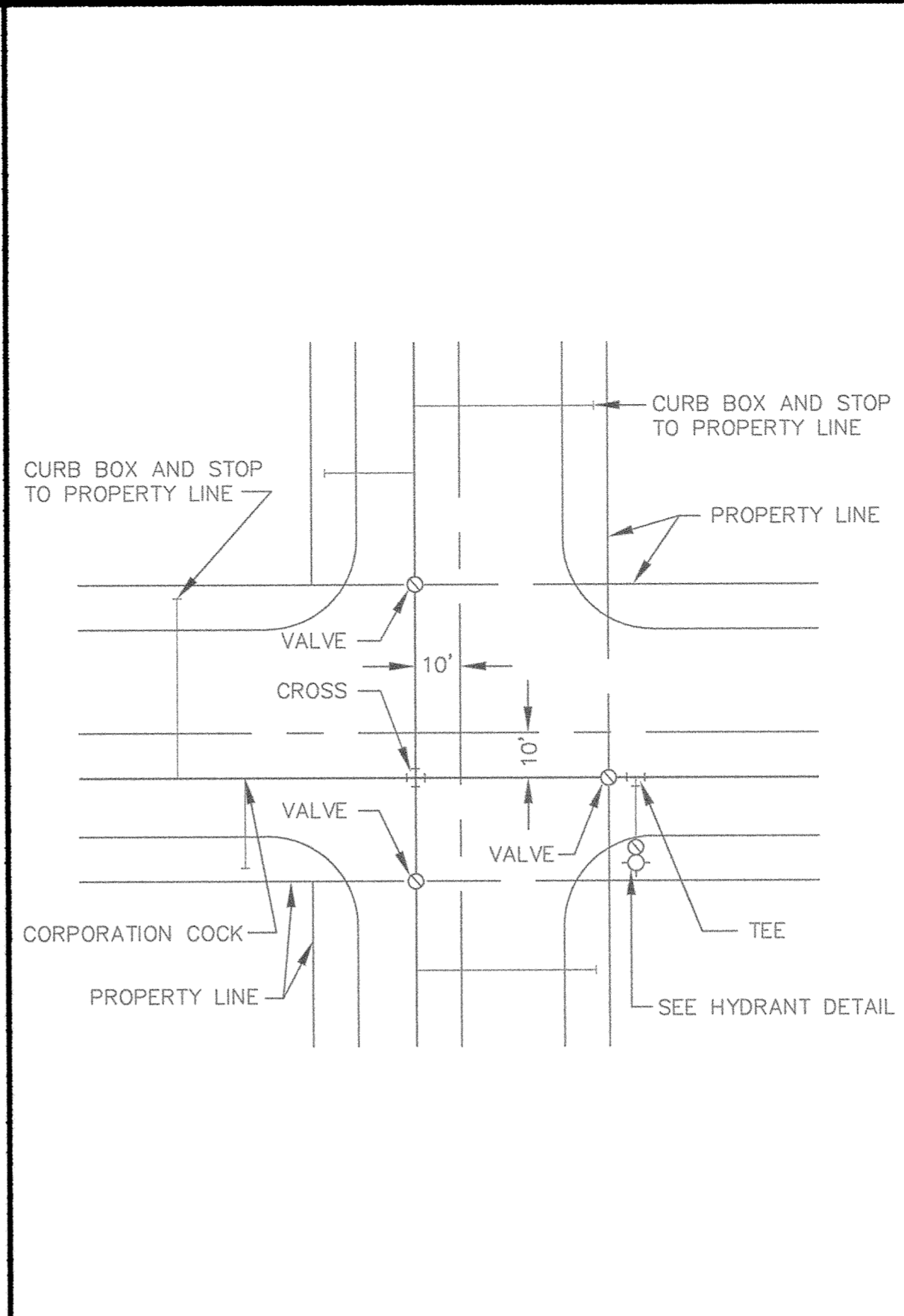


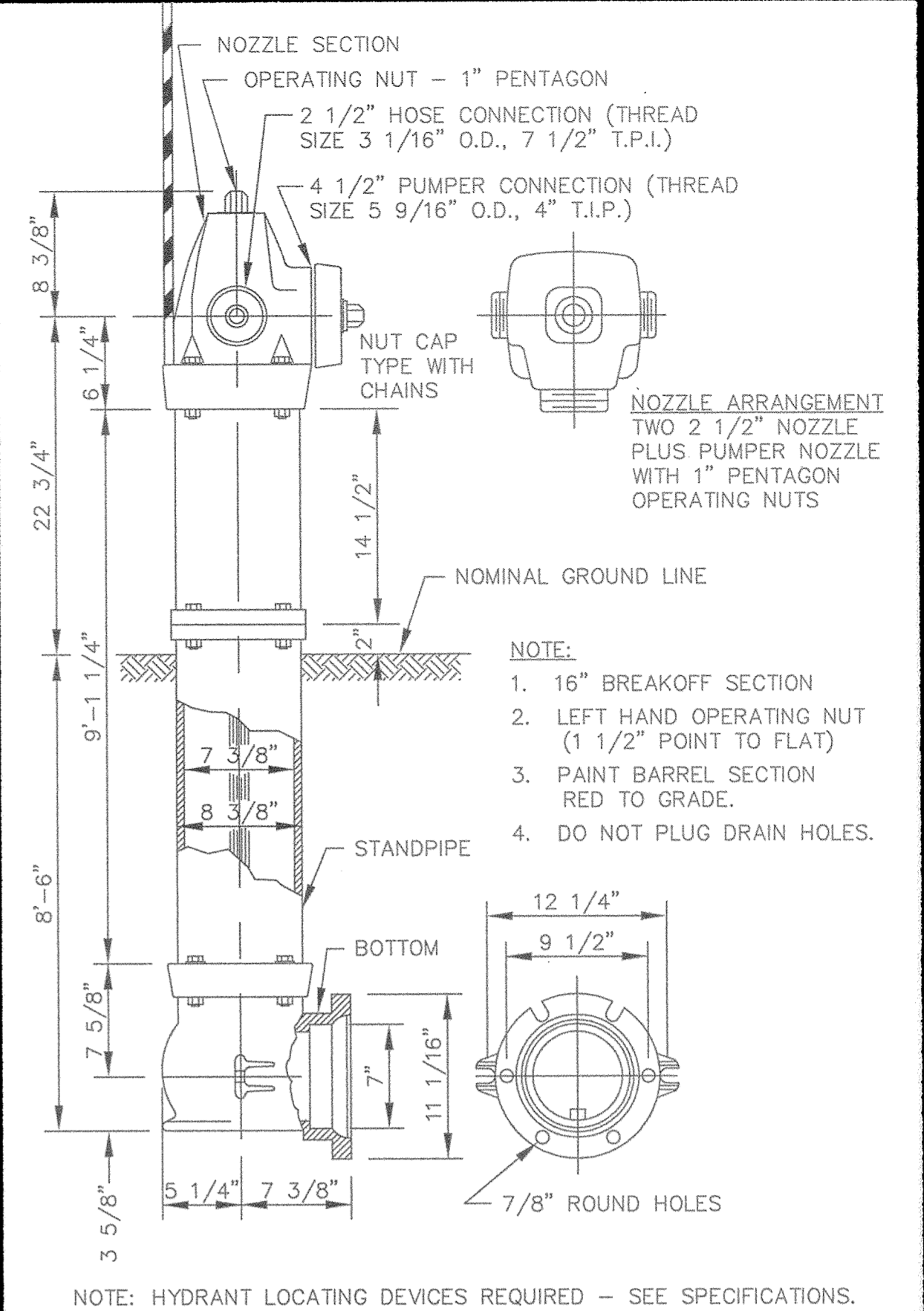
CLASS B PIPE BEDDING



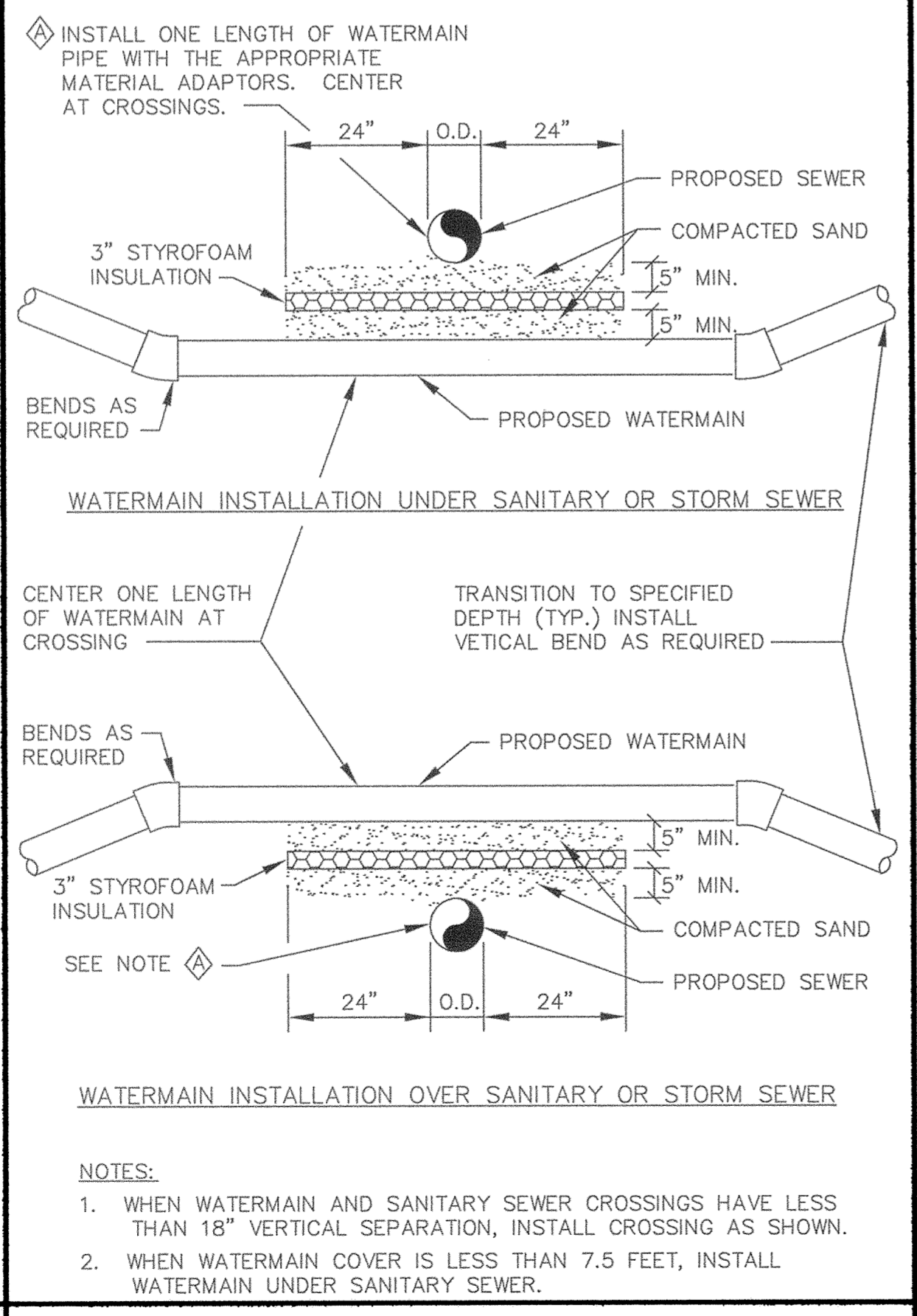
CLASS C PIPE BEDDING



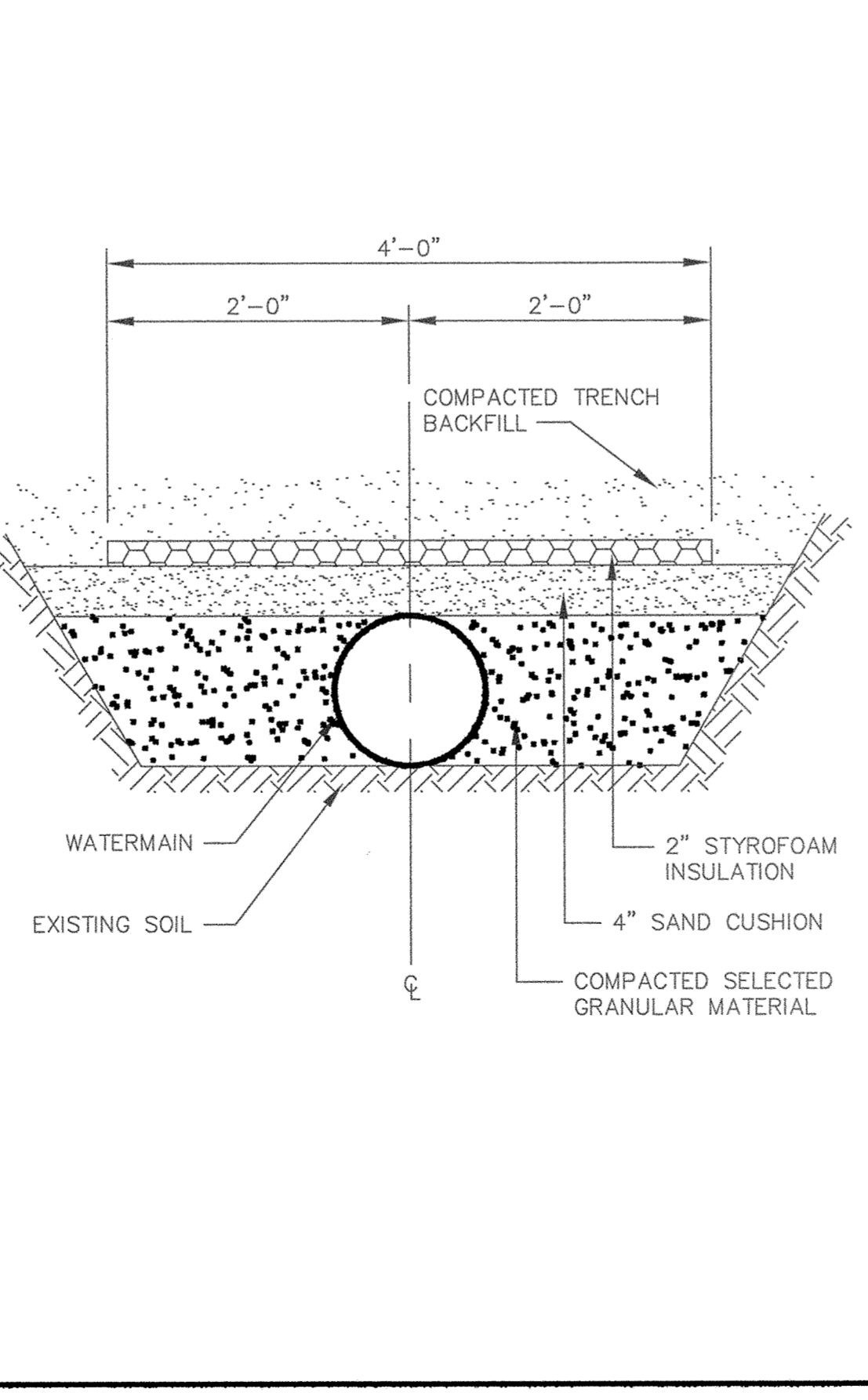
TYPICAL WATER LAYOUT



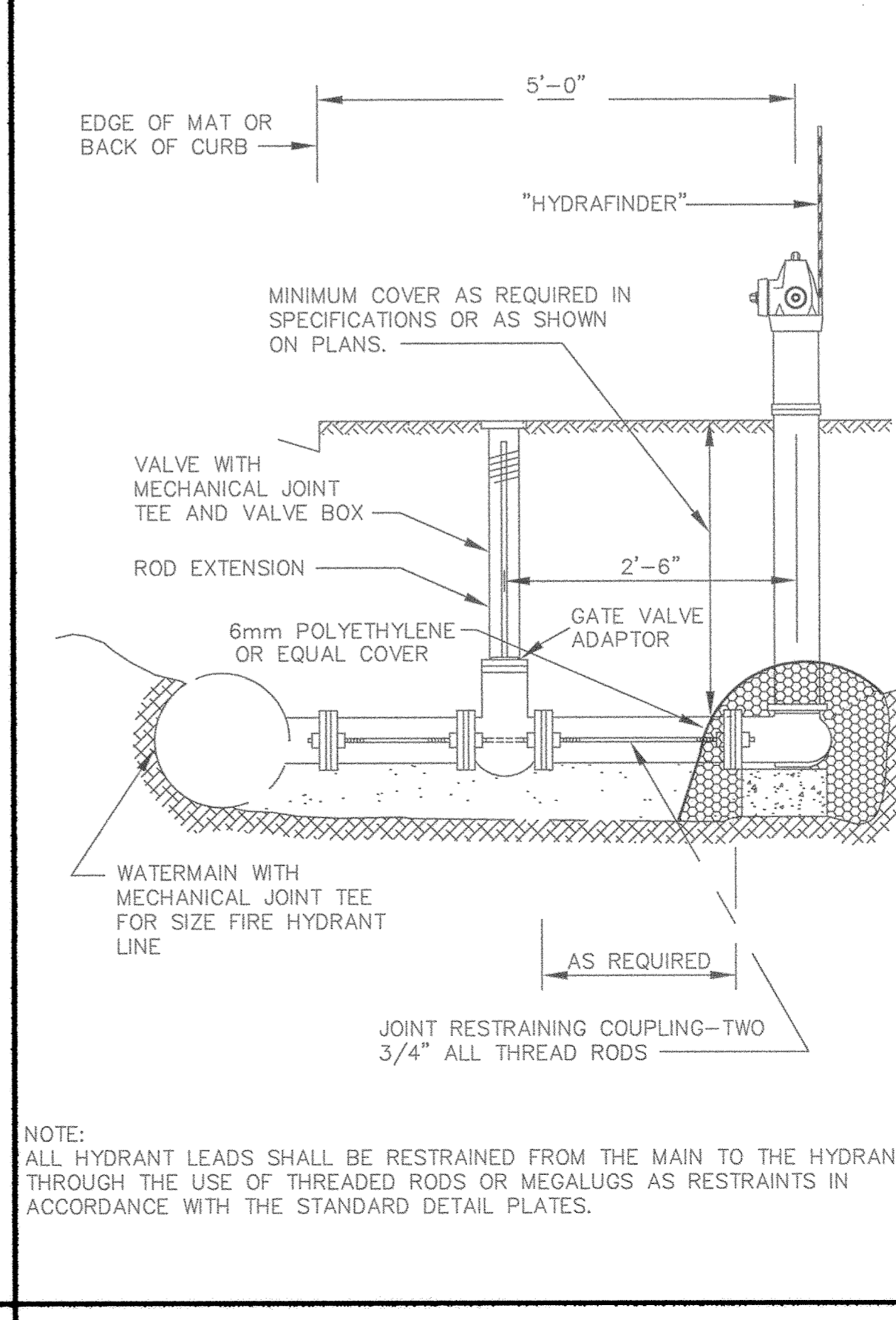
PACER HYDRANT DETAIL



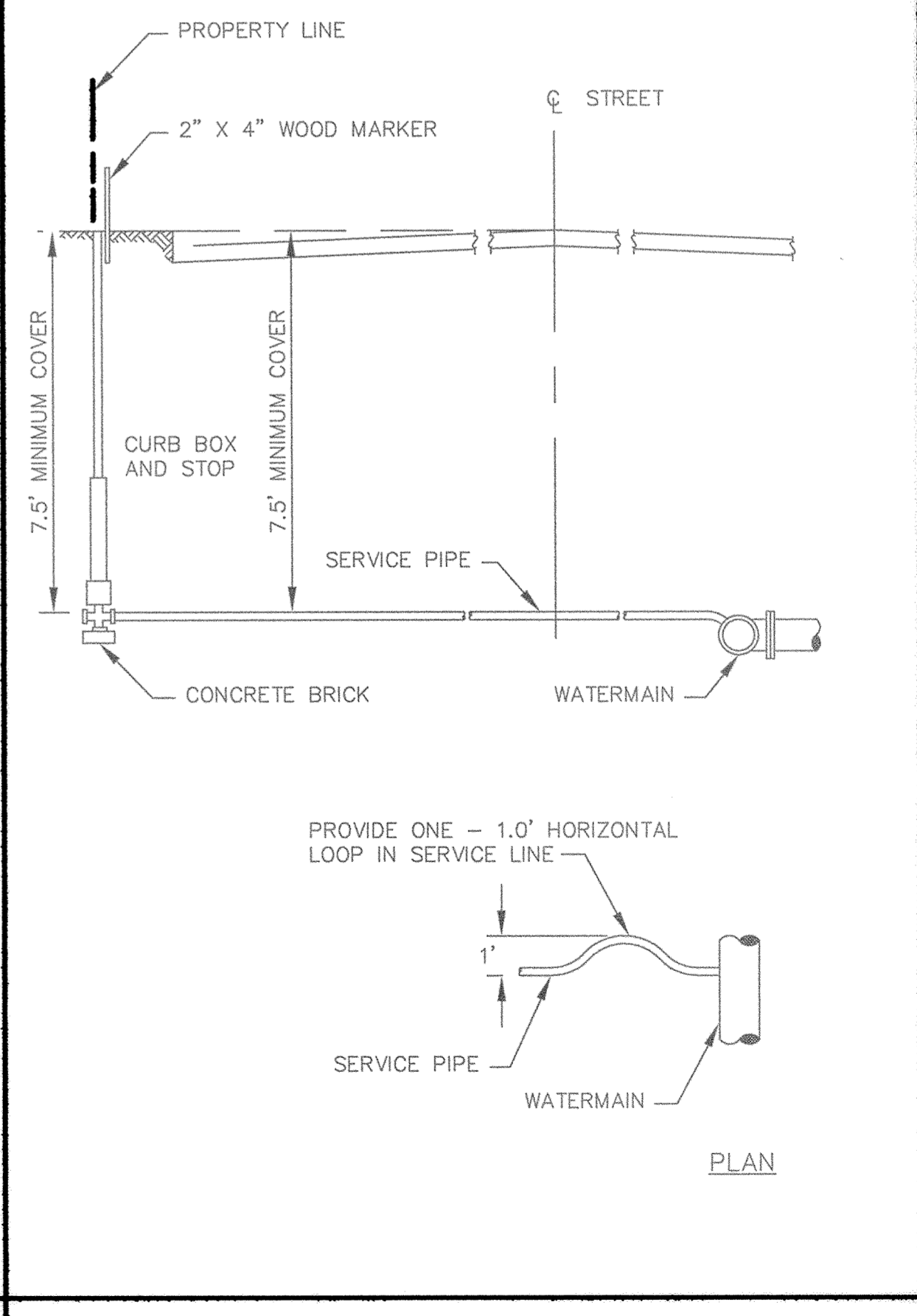
WATERMAIN CROSSING



PIPE INSULATION DETAIL



RODDING DETAIL



TYPICAL SERVICE DETAIL

DESIGNED BY: \_\_\_\_\_ DRAWN BY: EY  
 APPROVED BY: \_\_\_\_\_ JOB NUMBER 815361J  
 CAD DATE: April 08, 2002 1:44:42 p.m.  
 CAD FILE: 815361J.dwg\815361-D2.DWG (FYOUNGG)

I HEREBY CERTIFY THAT THIS PLAN, SPECIFICATION, OR REPORT WAS PREPARED BY ME OR UNDER MY DIRECT SUPERVISION AND THAT I AM A DULY LICENSED PROFESSIONAL ENGINEER UNDER THE LAWS OF THE STATE OF MINNESOTA.  
 SIGNATURE: \_\_\_\_\_ DATE: \_\_\_\_\_  
 PRINTED NAME: TERRY J. MAURER LIC. NO. 15316

NO.	DATE	BY	REVISION DESCRIPTION

1326 ENERGY PARK DRIVE  
 ST. PAUL, MINNESOTA 55108  
 (612) 644-4389  
**Howard R Green Company**  
 CONSULTING ENGINEERS

**PARK POINTE**  
 CITY OF ELK RIVER

**WATERMAIN DETAILS**

SHEET NO.  
**D2**