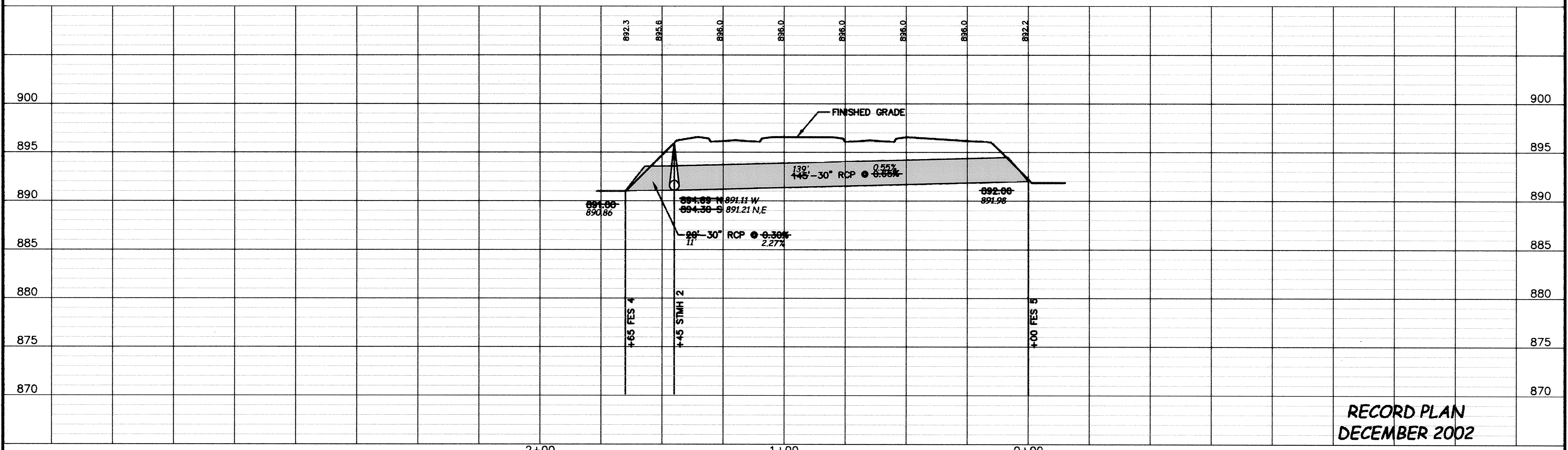
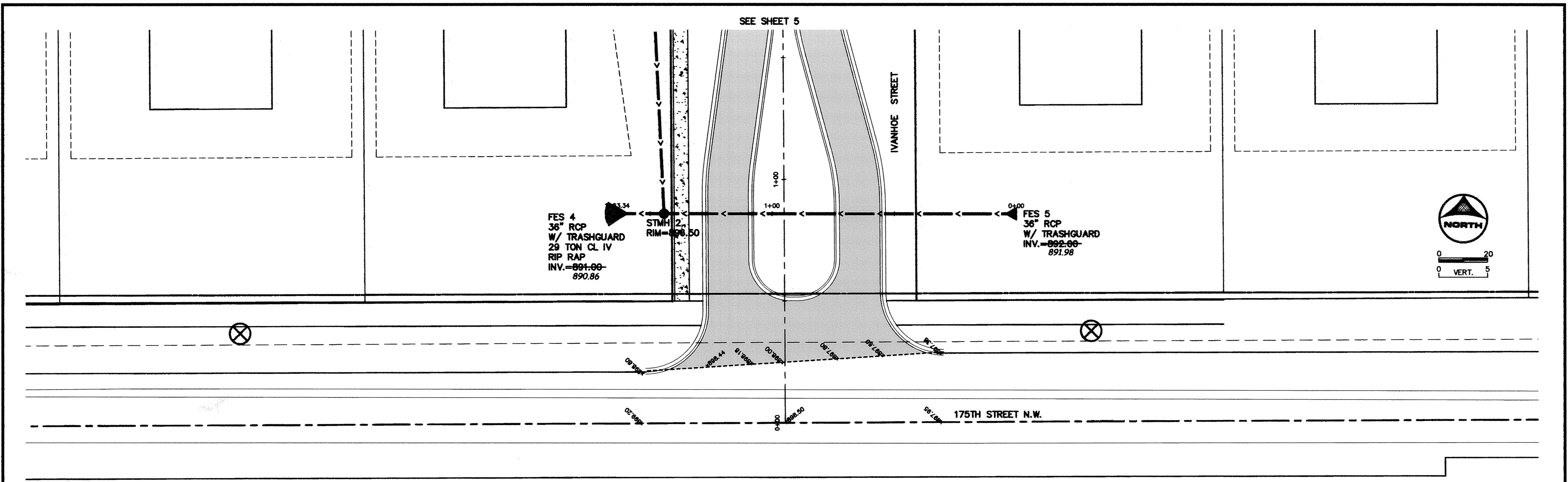


SDCD PRODUCTS • NEW HOPE, MINNESOTA
 REVISION BY PART NUMBER 882
 SDCD PRODUCTS • NEW HOPE, MINNESOTA
 REVISION BY PART NUMBER 882
 SDCD PRODUCTS • NEW HOPE, MINNESOTA
 REVISION BY PART NUMBER 882
 SDCD PRODUCTS • NEW HOPE, MINNESOTA
 REVISION BY PART NUMBER 882




RECORD PLAN
DECEMBER 2002

DESIGNED BY: KT/EY DRAWN BY: EY/JM
 APPROVED BY: APPROVED BY JOB NUMBER 815361J
 CAD DATE: January 09, 2003 8:50:26 a.m.
 CAD FILE: 815361J\dwg\STORM 5.DWG (JLALLEN)

I HEREBY CERTIFY THAT THIS PLAN, SPECIFICATION, OR REPORT
 WAS PREPARED BY ME OR UNDER MY DIRECT SUPERVISION AND
 THAT I AM A DULY LICENSED PROFESSIONAL ENGINEER UNDER
 THE LAWS OF THE STATE OF MINNESOTA.
 SIGNATURE _____ DATE _____
 PRINTED NAME TERRY J. MAURER LIC. NO. 15316

NO.	DATE	BY	REVISION DESCRIPTION

1326 ENERGY PARK DRIVE
 ST. PAUL, MINNESOTA 55108
 (651) 644-4389

Howard R Green Company
 CONSULTING ENGINEERS

PARK POINTE
 CITY OF ELK RIVER

STORM SEWER
 STREET AND UTILITY IMPROVEMENTS 0+00 TO END

SHEET NO.
27