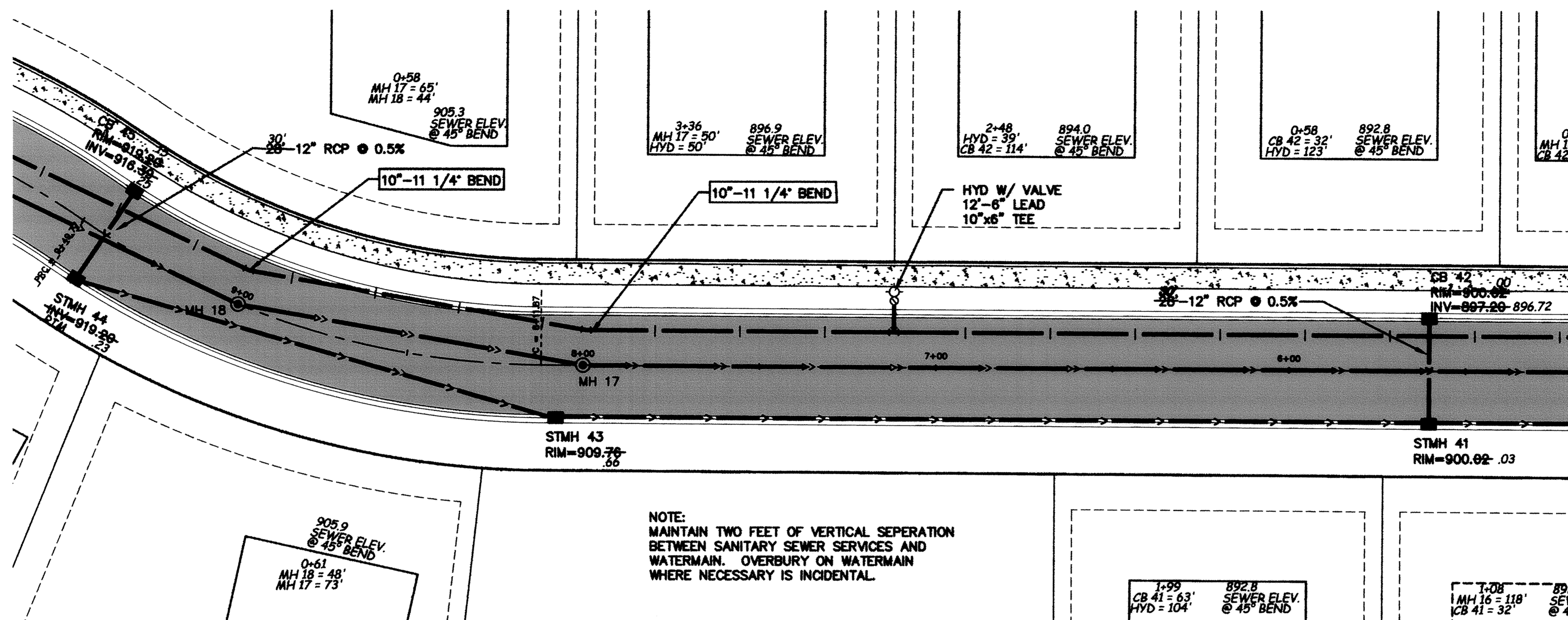


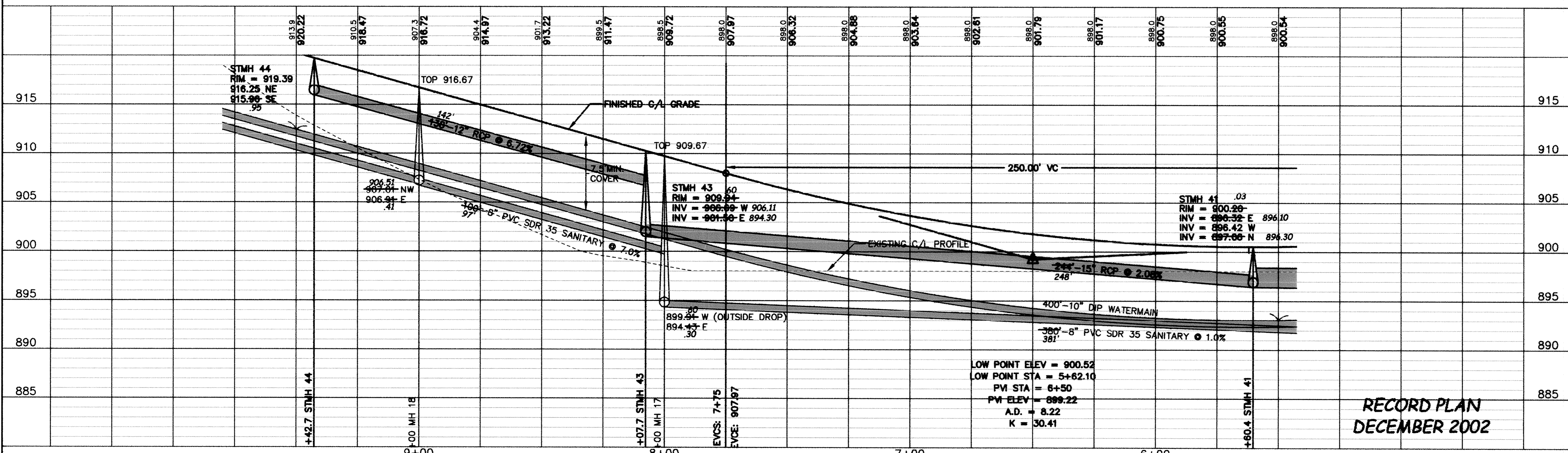
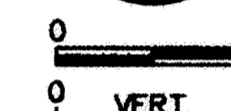
176TH LANE

SEE SHEET 21

SEE SHEET 19



NOTE: MAINTAIN TWO FEET OF VERTICAL SEPERATION BETWEEN SANITARY SEWER SERVICES AND WATERMAIN. OVERBURY ON WATERMAIN WHERE NECESSARY IS INCIDENTAL.



LOW POINT ELEV = 900.52
 LOW POINT STA = 5+62.10
 PVI STA = 6+50
 PM ELEV = 899.22
 A.D. = 8.22
 K = 30.41

RECORD PLAN
 DECEMBER 2002

DESIGNED BY: KI/EY DRAWN BY: EY/JM
 APPROVED BY: APPROVED BY JOB NUMBER 815361J
 CAD DATE: April 04, 2003 8:25:52 a.m.
 CAD FILE: 815361J.dwg\176TH.DWG (JLALLEN)

I HEREBY CERTIFY THAT THIS PLAN, SPECIFICATION, OR REPORT WAS PREPARED BY ME OR UNDER MY DIRECT SUPERVISION AND THAT I AM A DULY LICENSED PROFESSIONAL ENGINEER UNDER THE LAWS OF THE STATE OF MINNESOTA.
 SIGNATURE: _____ DATE: _____
 PRINTED NAME: TERRY J. MAURER LIC. NO. 15316

NO.	DATE	BY	REVISION DESCRIPTION

Howard R. Green Company
 CONSULTING ENGINEERS
 1326 ENERGY PARK DRIVE
 ST. PAUL, MINNESOTA 55108
 (651) 644-4389

PARK POINTE
 CITY OF ELK RIVER

176TH LANE
 STREET AND UTILITY IMPROVEMENTS
 5+50 TO 9+50

SHEET NO.
20

DRAWING NUMBER
 PARKP 02
 SHEET NO.
 20