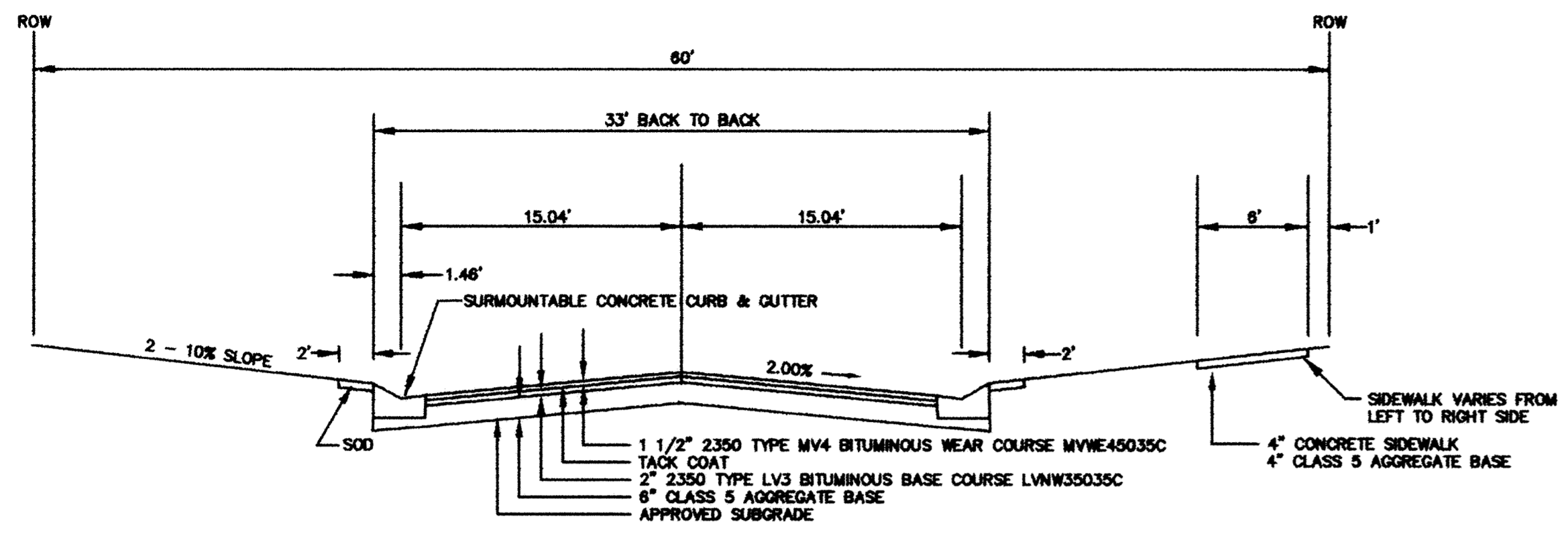


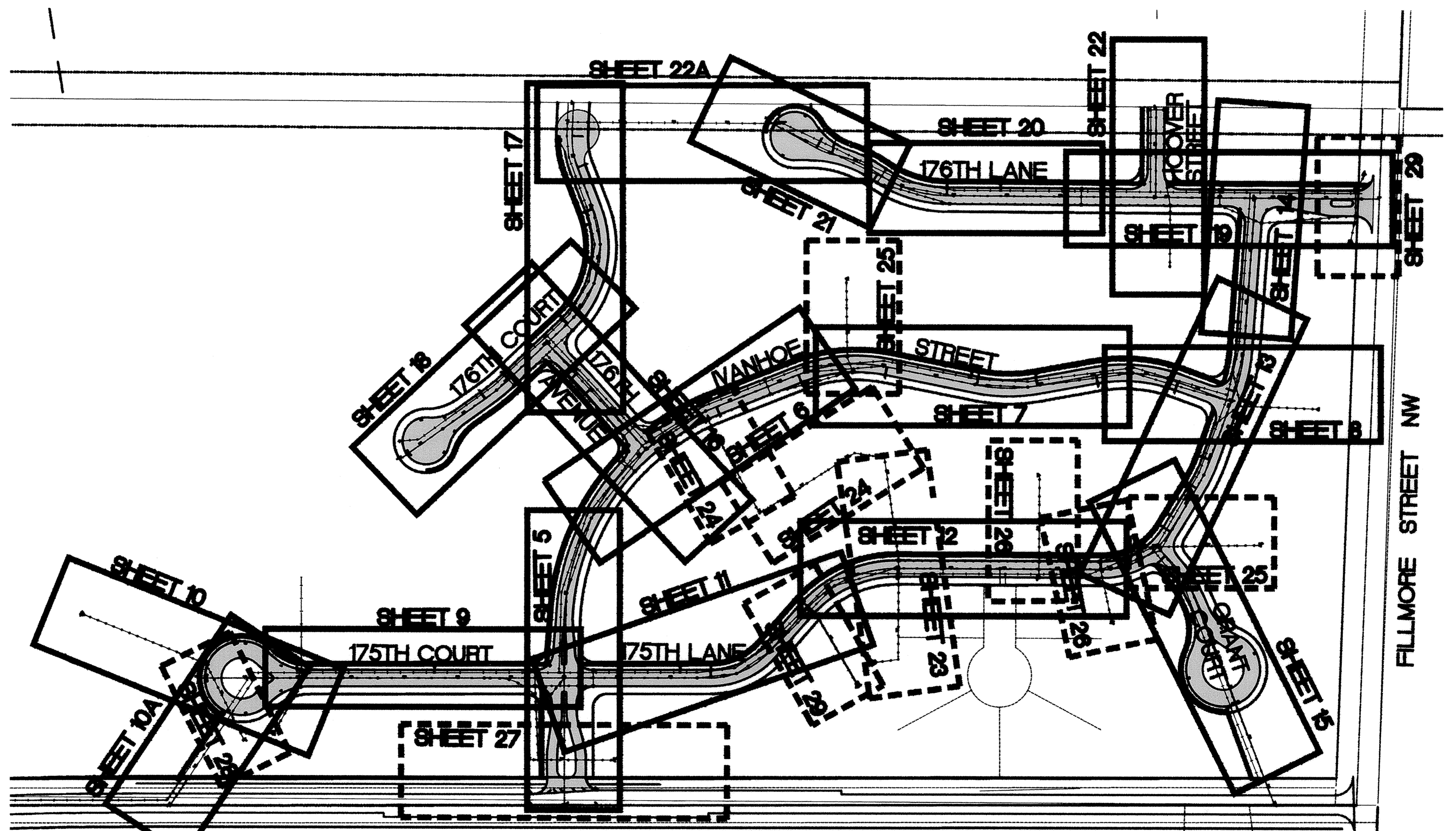
SDCO PRODUCTS • NEW HOPE, MINNESOTA  
REVISION BY PART NUMBER 6522  
SDCO PRODUCTS • NEW HOPE, MINNESOTA  
REVISION BY PART NUMBER 6522  
SDCO PRODUCTS • NEW HOPE, MINNESOTA  
REVISION BY PART NUMBER 6522  
SDCO PRODUCTS • NEW HOPE, MINNESOTA  
REVISION BY PART NUMBER 6522



TYPICAL STREET SECTION

NOTE:

1. B618 CONCRETE CURB AND GUTTER SHALL BE PLACED AROUND ENTRANCE RADII, AT STORM SEWER STRUCTURES, AND AROUND ENTRANCE MEDIAN.
2. ACCESS MUST BE MAINTAINED TO EXISTING HOUSE IN THE DEVELOPMENT.
3. CONCRETE SIDEWALK SHALL BE 6-INCHES THICK AT RESIDENTIAL DRIVEWAYS.



RECORD PLAN  
DECEMBER 2002

DESIGNED BY: \_\_\_\_\_ DRAWN BY: EY  
 APPROVED BY: \_\_\_\_\_ JOB NUMBER 815361J  
 CAD DATE: January 08, 2003 8:32:41 a.m.  
 CAD FILE: 815361J\dwg\815361-TYP.DWG (JLALLEN)

I HEREBY CERTIFY THAT THIS PLAN, SPECIFICATION, OR REPORT WAS PREPARED BY ME OR UNDER MY DIRECT SUPERVISION AND THAT I AM A DULY LICENSED PROFESSIONAL ENGINEER UNDER THE LAWS OF THE STATE OF MINNESOTA.  
 SIGNATURE: \_\_\_\_\_ DATE: \_\_\_\_\_  
 PRINTED NAME: TERRY J. MAURER LIC. NO. 15316

NO.	DATE	BY	REVISION DESCRIPTION

1326 ENERGY PARK DRIVE  
 ST. PAUL, MINNESOTA 55108  
 (612) 644-4389  
**Howard R. Green Company**  
 CONSULTING ENGINEERS

**PARK PONTE**  
 CITY OF ELK RIVER

LOCATION MAP AND TYPICAL SECTIONS

SHEET NO.  
**2**