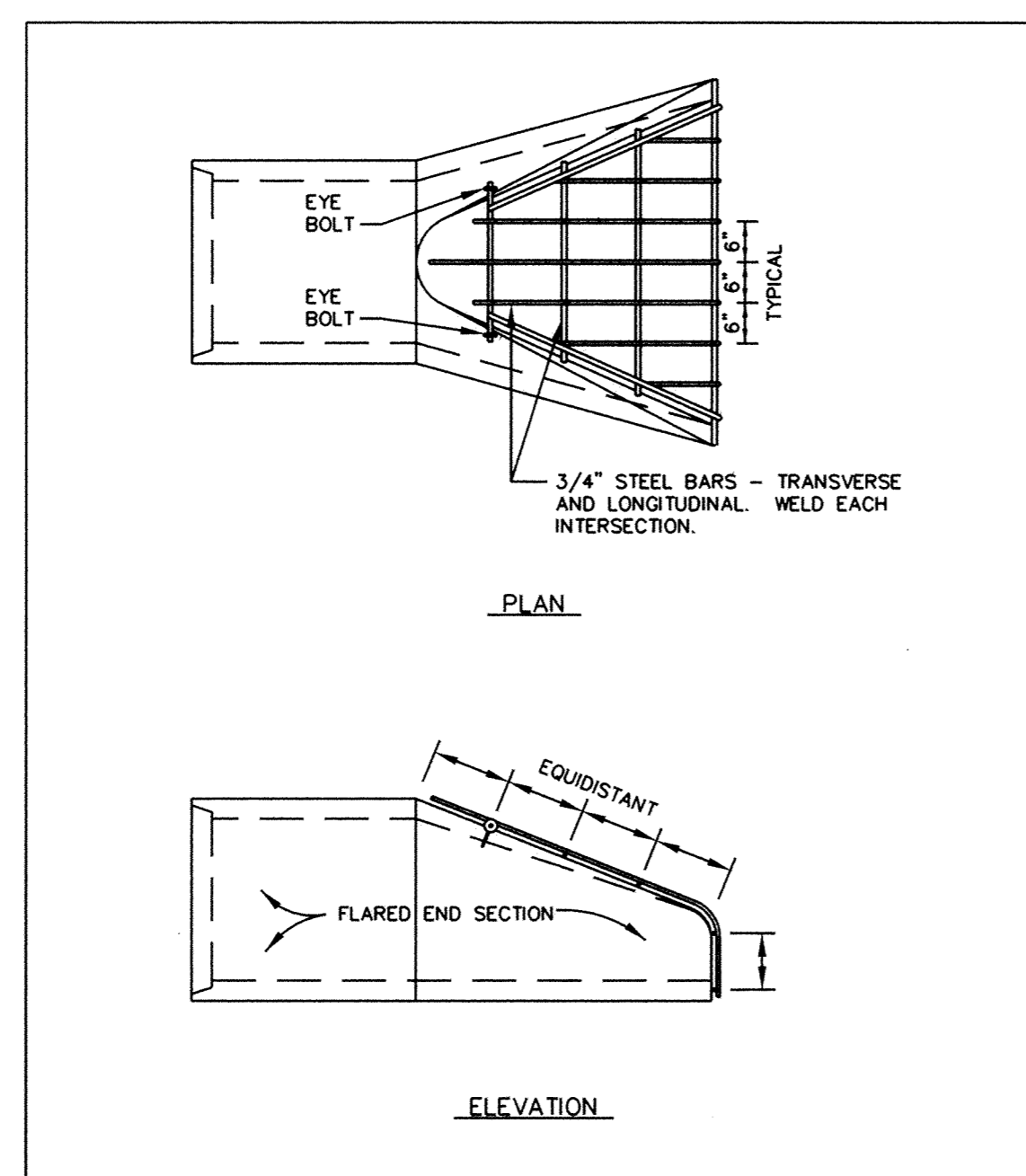


ERSTD-ST

TYPICAL STREET SECTION

City of Elk River

STANDARD PLATE NO. 2010

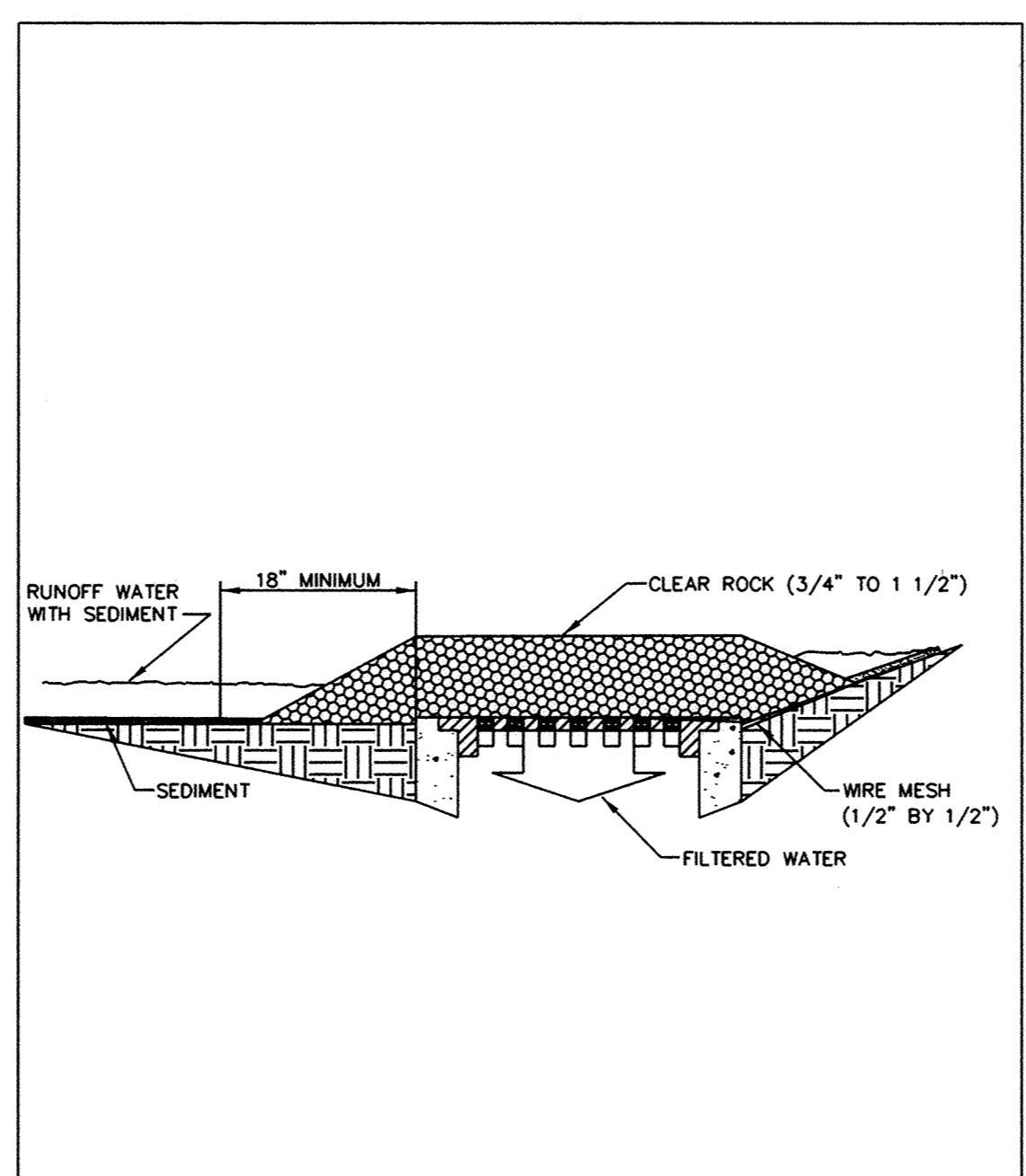


ERSTD-SM

TRASH GUARD

City of Elk River

STANDARD PLATE NO. 2504

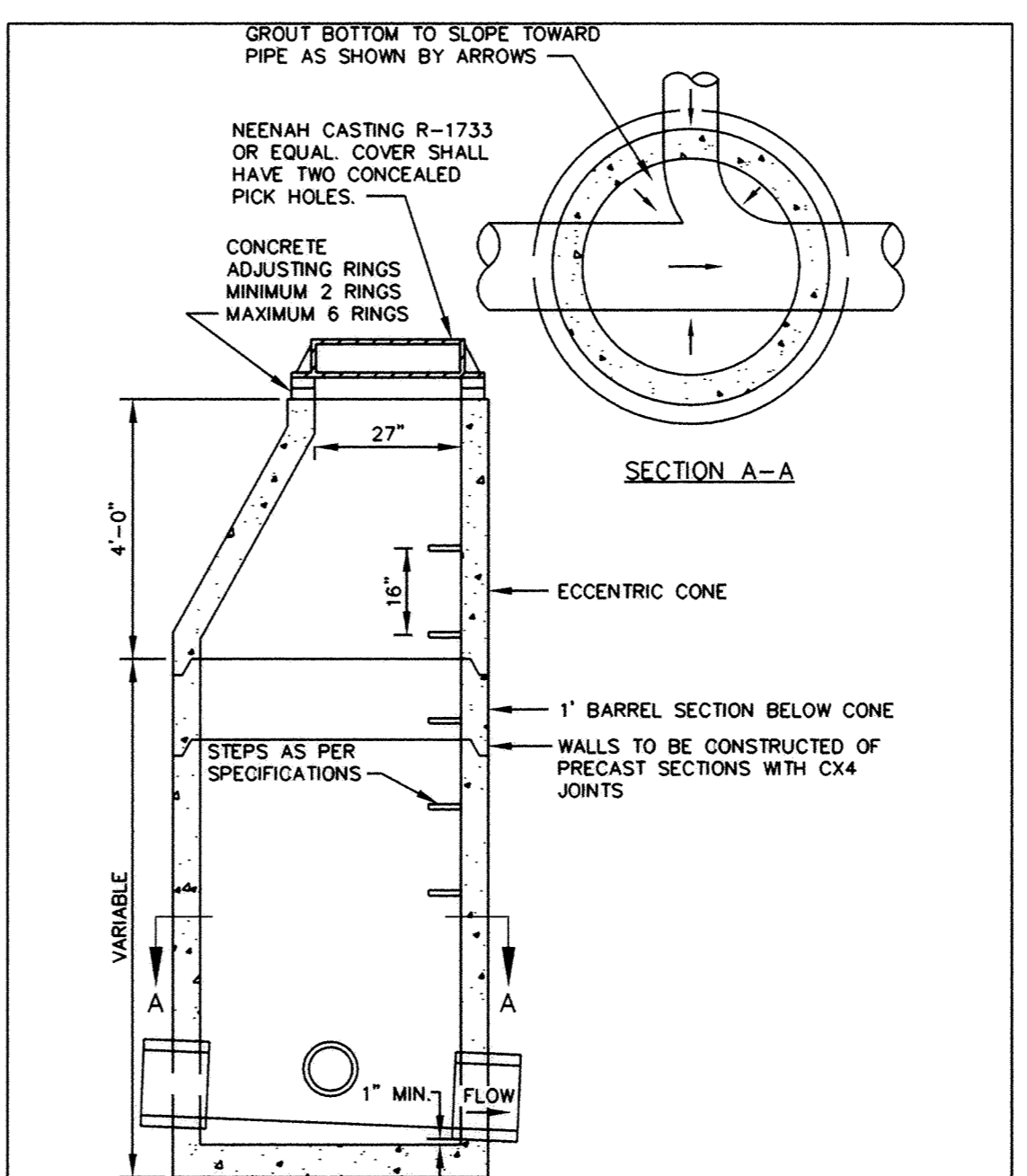


ERSTD-SM

CATCH BASIN SEDIMENTATION BARRIER

City of Elk River

STANDARD PLATE NO. 2510

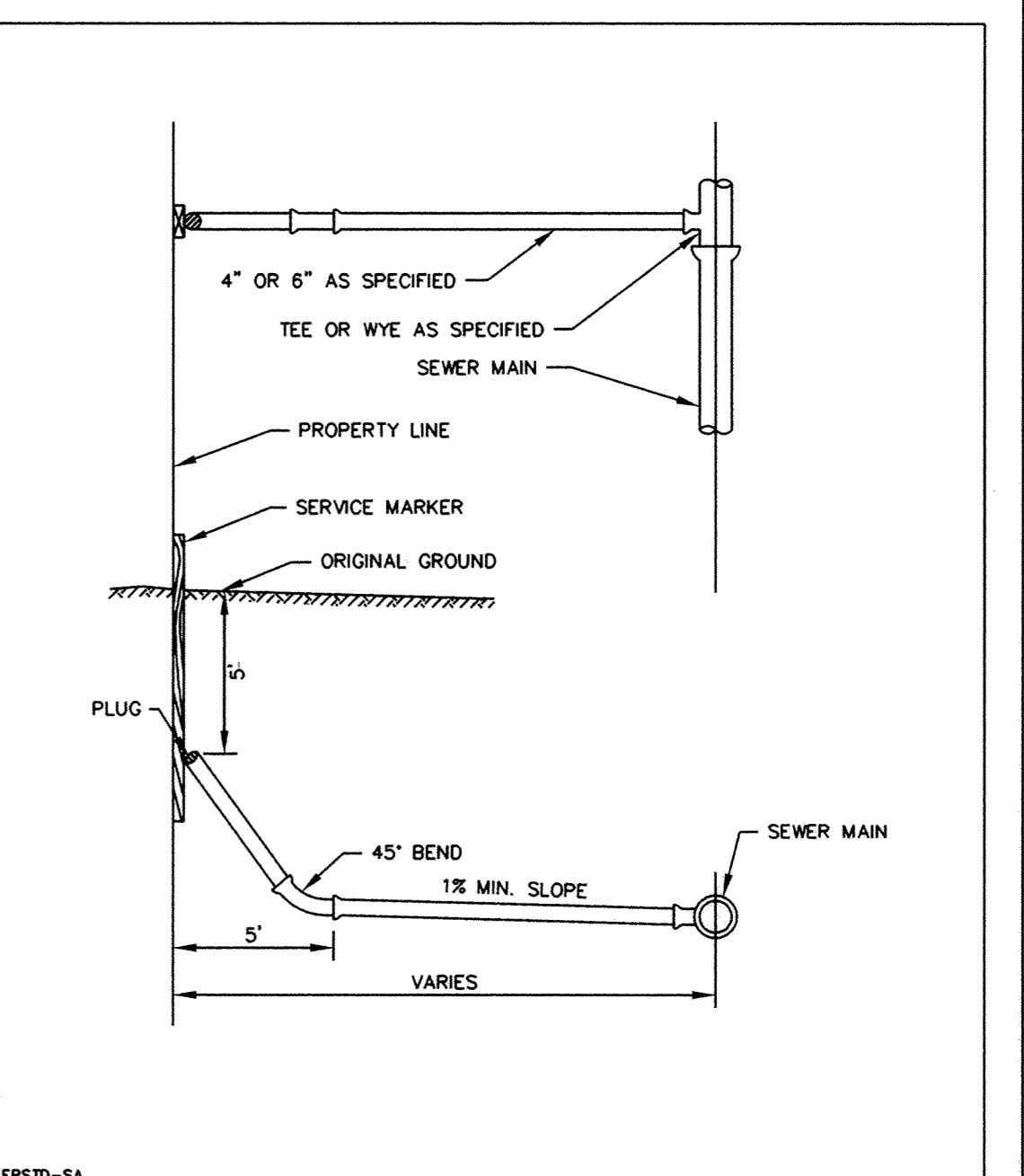


ERSTD-SA

STANDARD MANHOLE

City of Elk River

STANDARD PLATE NO. 4000

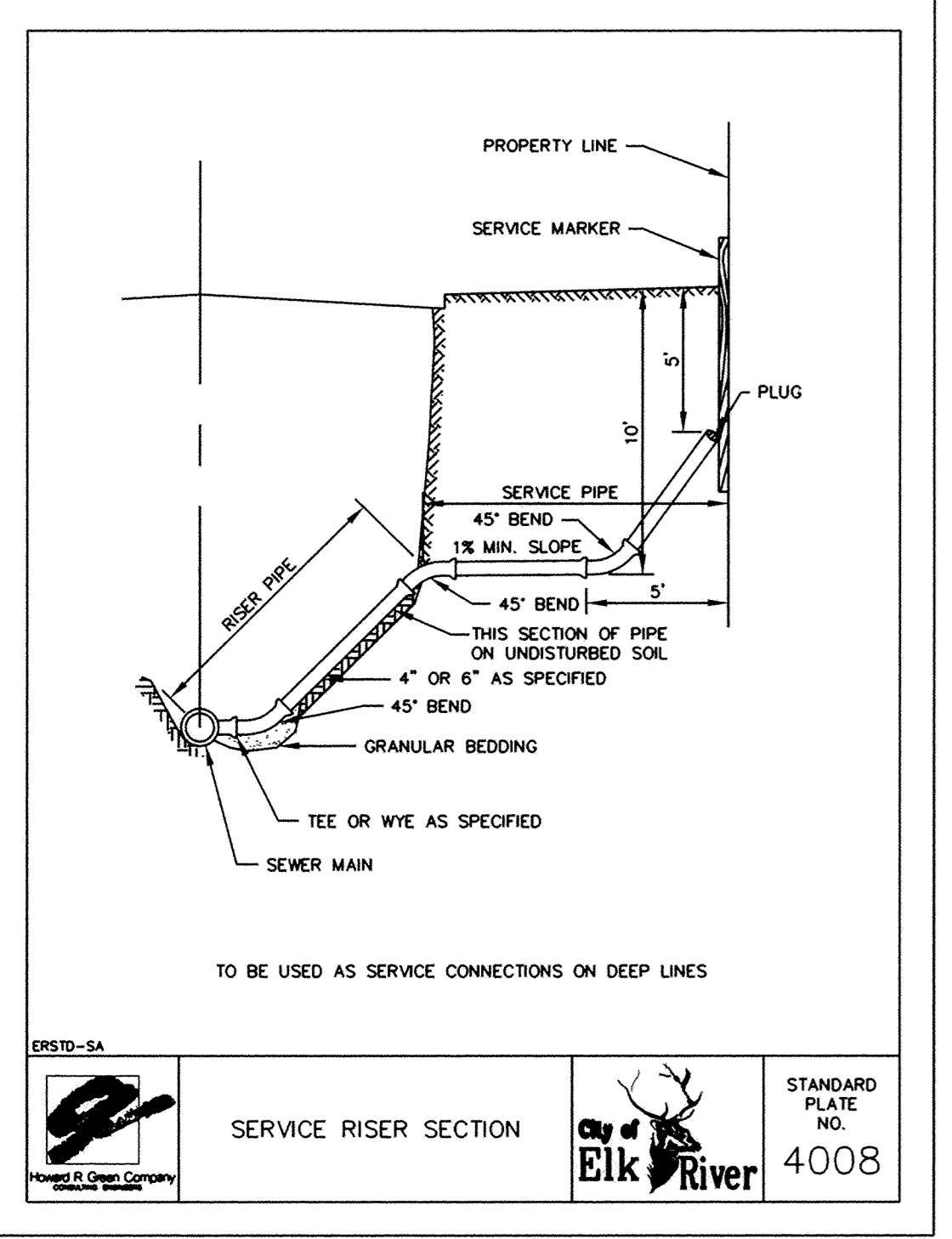
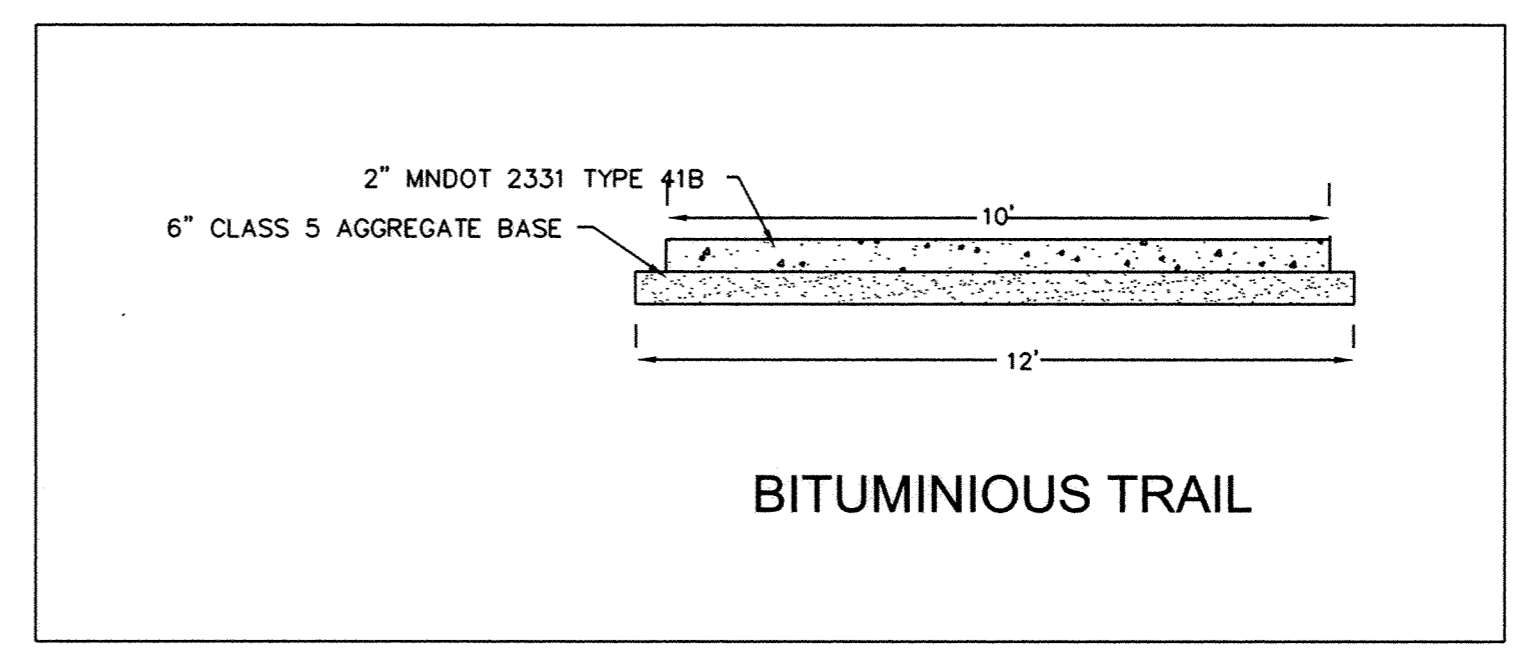
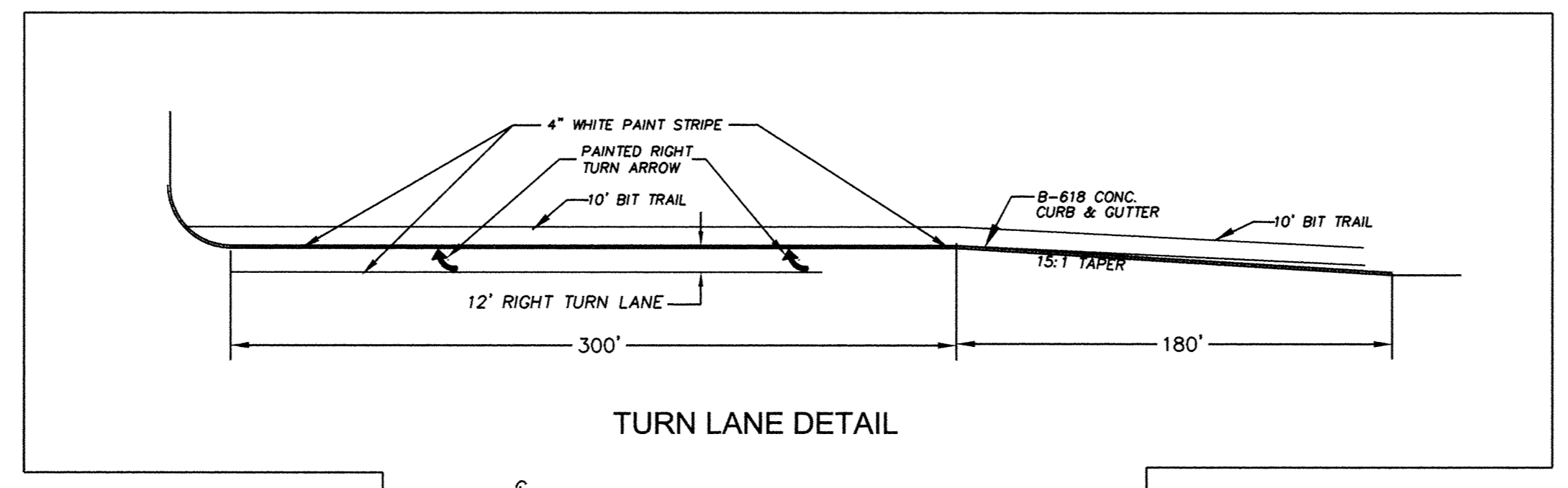


ERSTD-SA

TYPICAL HOUSE SERVICE

City of Elk River

STANDARD PLATE NO. 4007

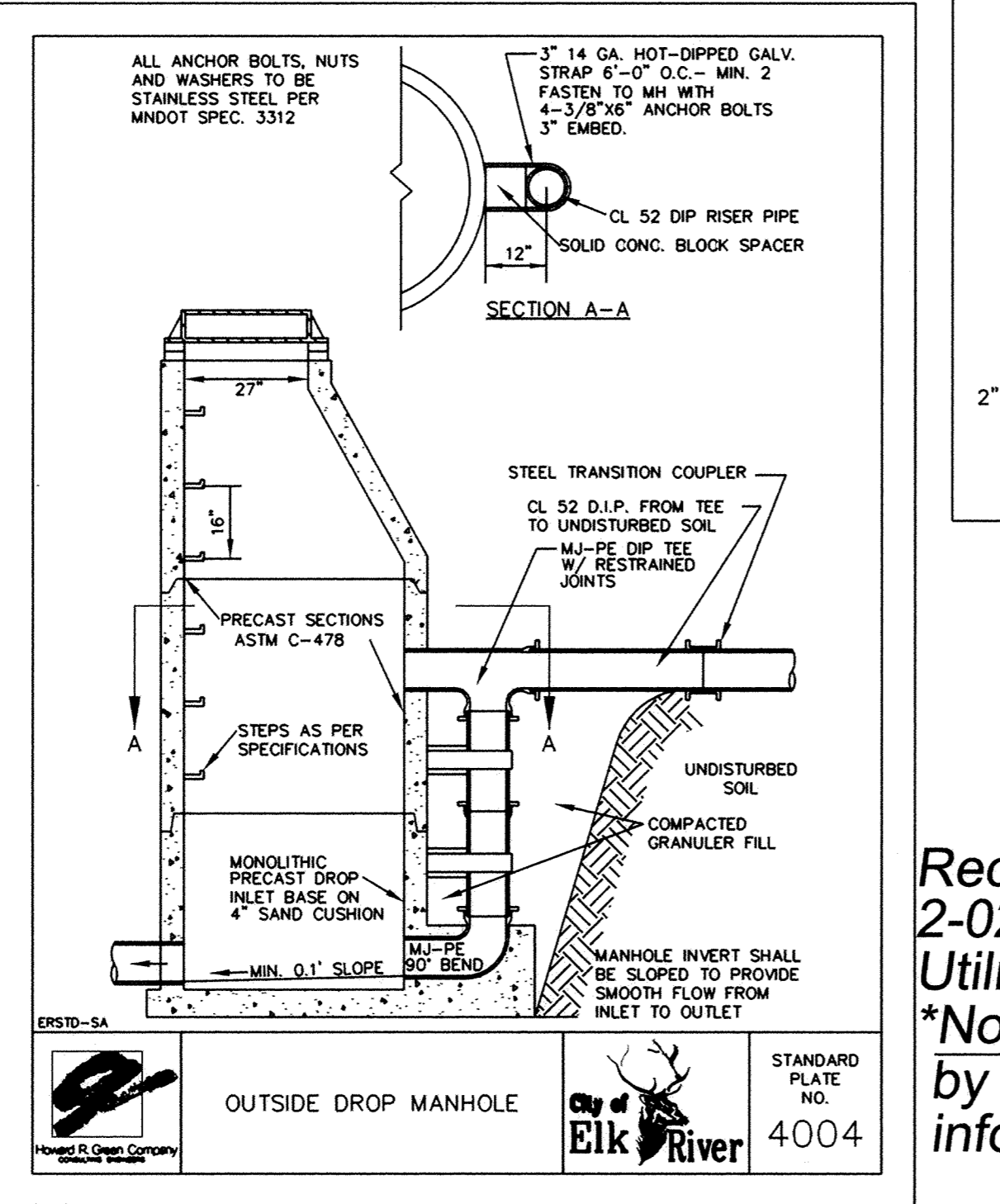


ERSTD-SA

SERVICE RISER SECTION

City of Elk River

STANDARD PLATE NO. 4008

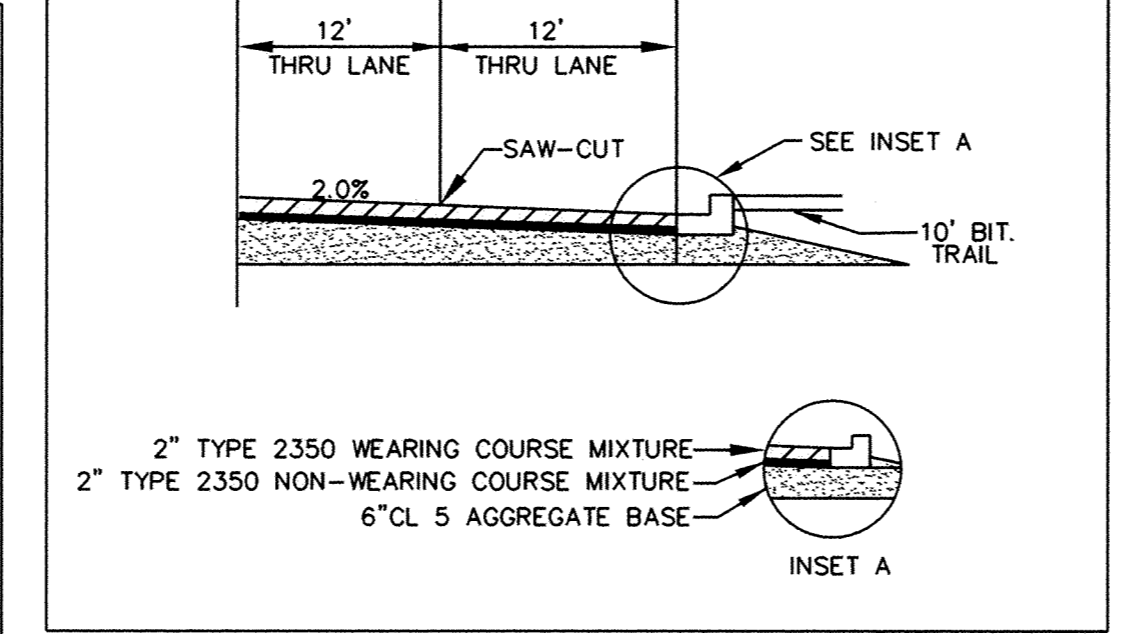


ERSTD-SA

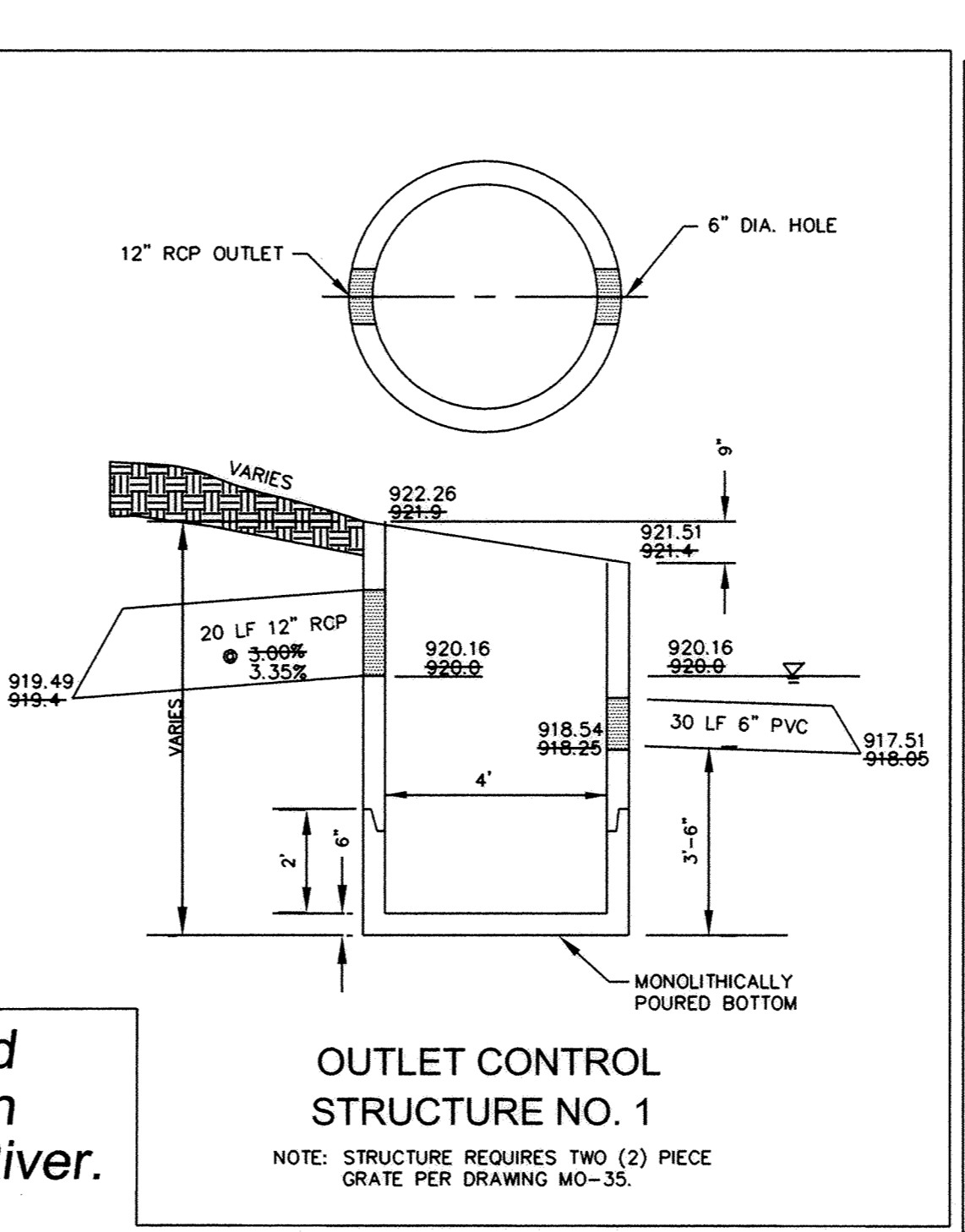
OUTSIDE DROP MANHOLE

City of Elk River

STANDARD PLATE NO. 4004

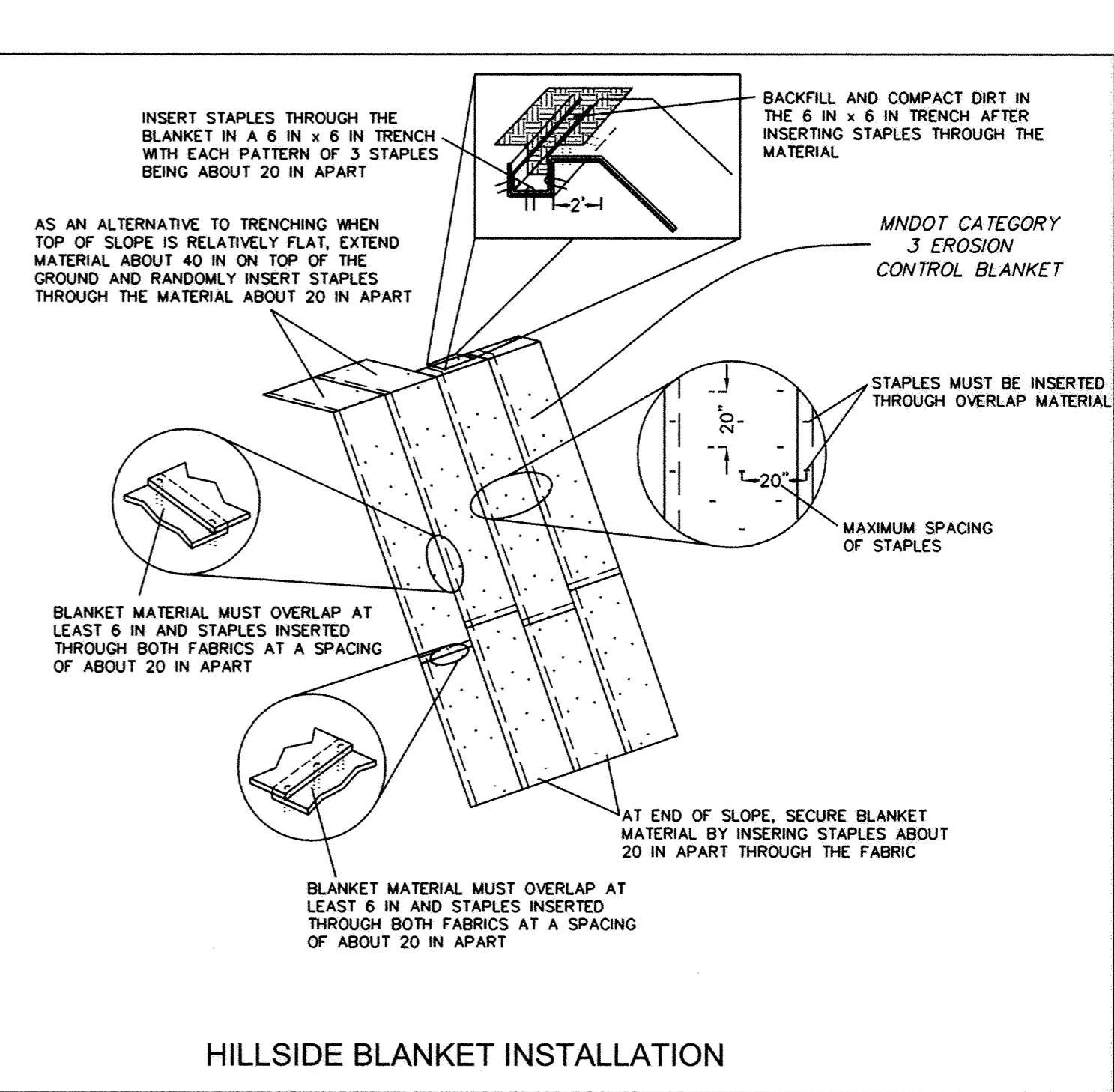


2\"/>



OUTLET CONTROL STRUCTURE NO. 1

NOTE: STRUCTURE REQUIRES TWO (2) PIECE GRATE PER DRAWING MO-35.



HILLSIDE BLANKET INSTALLATION

Record Plans
2-02-05
Utility Contractor: Hennen Construction
*Note: Rim and invert elevations provided by Otto Associates. All other record plan information provided by the City of Elk River.

1	10/21/04	M.L.H.	REVISED DETAIL 2010
NO.	DATE	BY	DESCRIPTION
			REVISIONS

DESIGNED DRAWN M.P.C. M.L.H.
CHECKED M.P.C.
I HEREBY CERTIFY THAT THIS PLAN, SPECIFICATION, OR REPORT WAS PREPARED BY ME OR UNDER MY DIRECT SUPERVISION AND THAT I AM A DULY LICENSED PROFESSIONAL ENGINEER UNDER THE LAWS OF THE STATE OF MINNESOTA.
Martin P. Compadre
DATE: 2/17/06 LICENSE # 19901

Web Site: www.ottoassociates.com
9 West Division St. Buffalo, MN 55313
Ph: (763)682-4727 Fax: (763)682-3522
Engineers and Land Surveyors, Inc.

PRESTIGIOUS WOODLAND HILLS
BREUER FAMILY LLP
ELK RIVER, MN

DETAILS
SHEET NO. 14 OF 14 SHEETS

PROJECT NO: 2-02-0628
DATE: 9/23/04