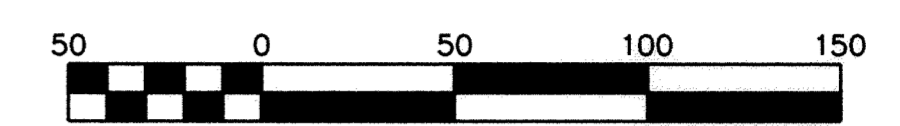
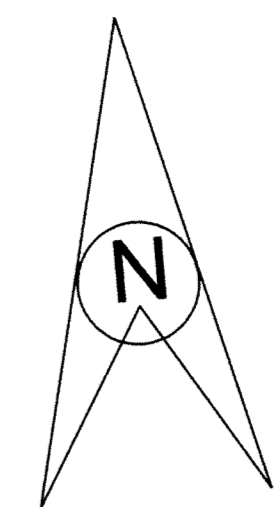
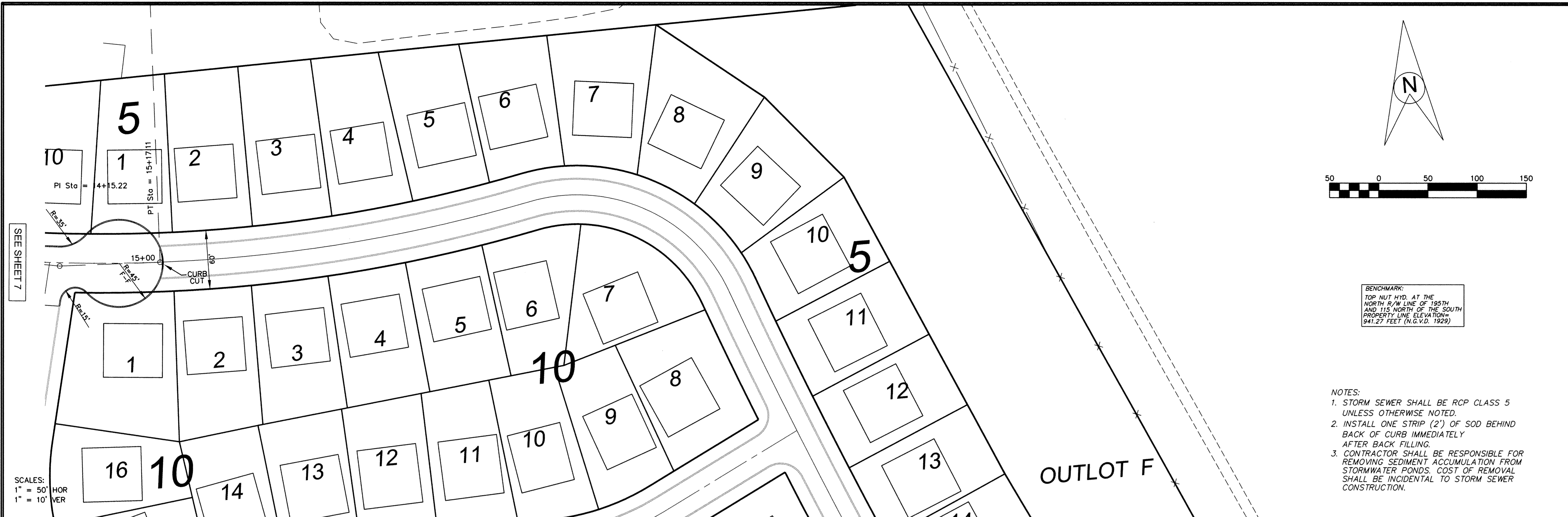


PROJECTS • NEW URBAN MINNESOTA
REGISTERED PROFESSIONAL ENGINEER BY PART NUMBER 0532
REGISTERED SURVEYOR BY PART NUMBER 0532



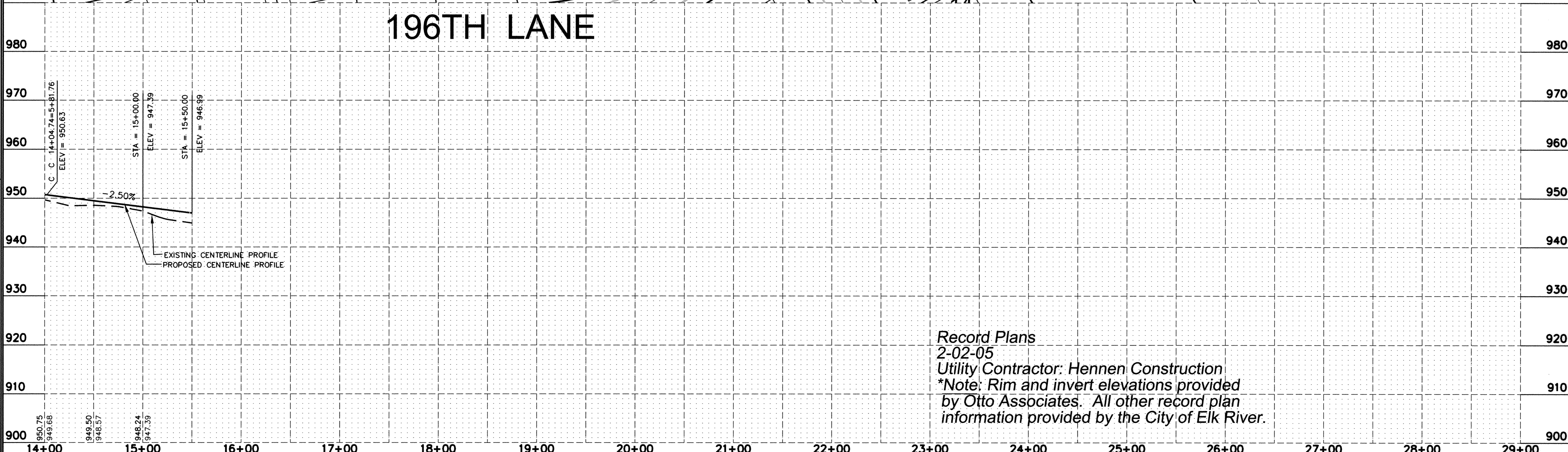
BENCHMARK:
TOP NUT H.D. AT THE
NORTH R/W LINE OF 195TH
AND 115 NORTH OF THE SOUTH
PROPERTY LINE. ELEVATION =
941.27 FEET (N.G.V.D. 1929)

- NOTES:
1. STORM SEWER SHALL BE RCP CLASS 5 UNLESS OTHERWISE NOTED.
 2. INSTALL ONE STRIP (2') OF SOD BEHIND BACK OF CURB IMMEDIATELY AFTER BACK FILLING.
 3. CONTRACTOR SHALL BE RESPONSIBLE FOR REMOVING SEDIMENT ACCUMULATION FROM STORMWATER PONDS. COST OF REMOVAL SHALL BE INCIDENTAL TO STORM SEWER CONSTRUCTION.



SCALES:
1" = 50' HOR
1" = 10' VER

196TH LANE



Record Plans
2-02-05
Utility Contractor: Hennen Construction
*Note: Rim and invert elevations provided
by Otto Associates. All other record plan
information provided by the City of Elk River.

NO.	DATE	BY	DESCRIPTION
1	10/21/04	M.L.H.	ADDED CURB CUT IN CUL-DE-SAC
REVISIONS			

DESIGNED M.P.C.
DRAWN M.L.H.
CHECKED M.P.C.
DATE: 9/23/04
REG. NO. 19901

OTTO ASSOCIATES
Engineers and Land Surveyors, Inc.
Web Site: www.ottoassociates.com
9 West Division St.
Buffalo, MN 55313
Ph: (763)682-4727
Fax: (763)682-3522

PRESTIGIOUS WOODLAND HILLS
BREUER FAMILY, LLP
ELK RIVER, MN

STREET & STORM SEWER PLAN
196TH LANE
SHEET NO. 8 OF 14 SHEETS

PROJECT NO:
2-02-0628
DATE: 9/23/04