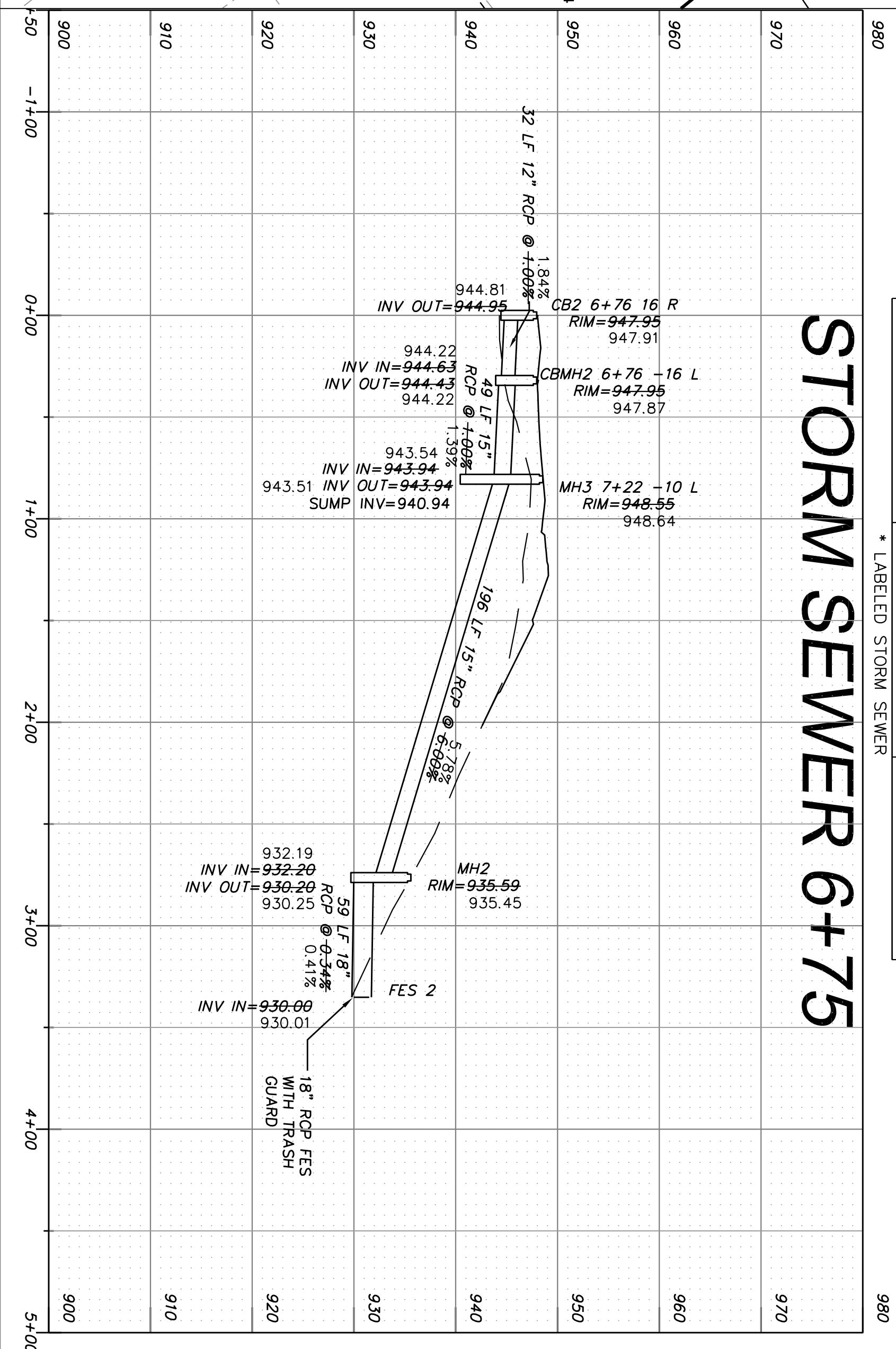


**STORM SEWER STRUCTURE SCHEDULE**

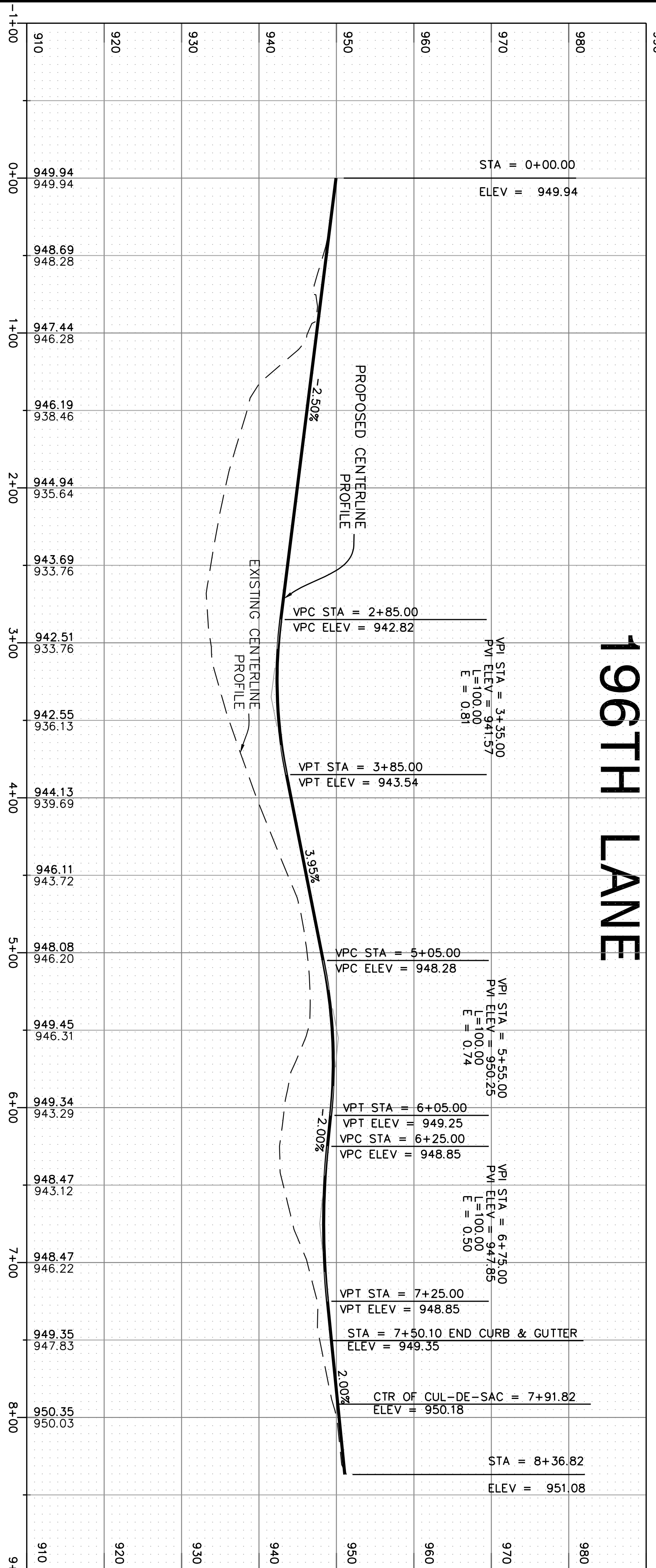
STRUCTURE NO.	STRUCTURE SIZE	CASTING
CB1	24"x36"	NEENAH R-3067-V
CB2	24"x36"	NEENAH R-3067-V
CBMH1	48" Ø	NEENAH R-3067-V
CBMH2	48" Ø	NEENAH R-3067-V
MH1	48" Ø	NEENAH R-1733*
MH2	48" Ø	NEENAH R-1733*
MH3	48" Ø	NEENAH R-1733*

\* LABELED STORM SEWER

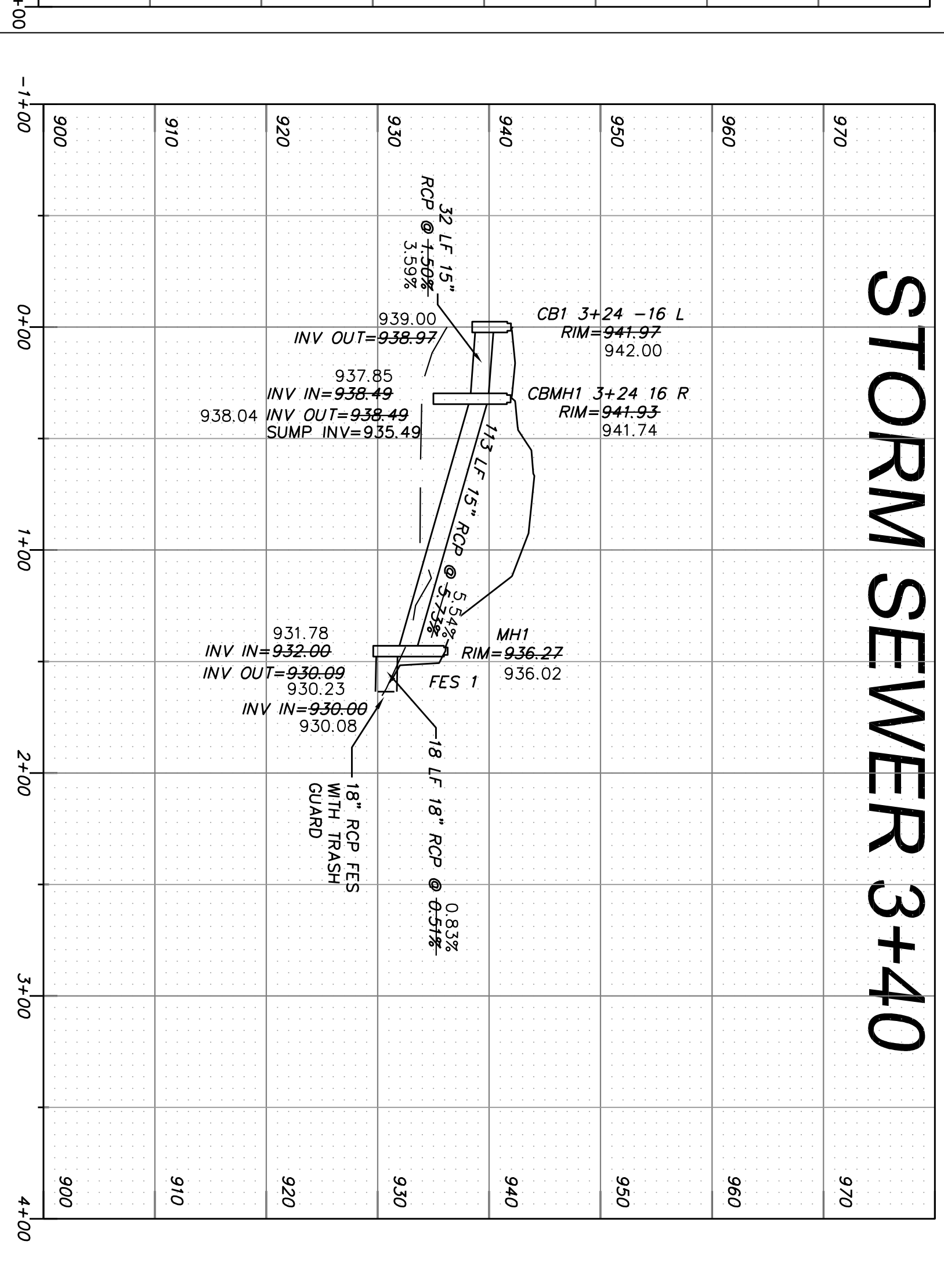
# STORM SEWER 6+75



# 196TH LANE



# STORM SEWER 3+40



REV. NO.	DATE	BY	DESCRIPTION

DESIGNED DRAWN BY: C.S.O. T.A.B. CHECKED BY: C.S.O.

I HEREBY CERTIFY THAT THIS PLAN WAS PREPARED BY ME OR UNDER MY DIRECT SUPERVISION AND THAT I AM A DULY REGISTERED PROFESSIONAL ENGINEER UNDER THE LAWS OF THE STATE OF MINNESOTA.

Corc M. Schwahn, P.E.  
12-28-16  
LICENSE NO. 40433  
Engineers & Land Surveyors, Inc.

**OTTO ASSOCIATES**  
www.ottoassociates.com  
9 West Division Street  
Buffalo, MN 55313  
Phone: (763) 882-4727  
Fax: (763) 882-3822

**PRESTIGIOUS WOODLAND HILLS THIRD ADDITION**  
BENZINGER PROPERTIES  
ELK RIVER, MN

STREET & STORM SEWER PLAN  
196TH LANE

PROJECT NO.: 14-0418  
DATE: 2/23/15

SHEET NO. 3 OF 8 SHEETS