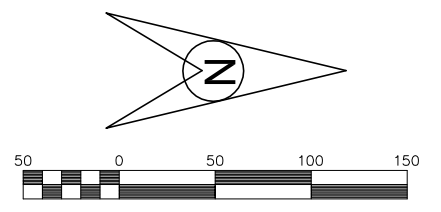


SCALES:  
1" = 50' HOR  
1" = 10' VER

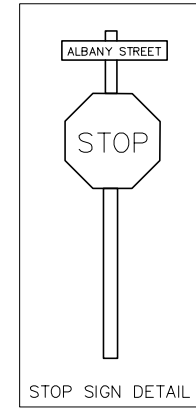


**BENCHMARK:**  
TOP NUT HYD. APPROX. 130'  
EAST OF THE INTERSECTION OF  
196TH LANE & ALBANY STREET  
ELEV=950.31 (N.G.V.D. 1929)

STORM SEWER STRUCTURE SCHEDULE

STRUCTURE NO.	STRUCTURE SIZE	CASTING
CB 1	24" x 36"	NEENAH R-3067-V
CB 2	24" x 36"	NEENAH R-3067-V
CBM 1	48" Ø	NEENAH R-3067-V
CBM 2	48" Ø	NEENAH R-3067-V
MH 1	48" Ø	NEENAH R-1733*

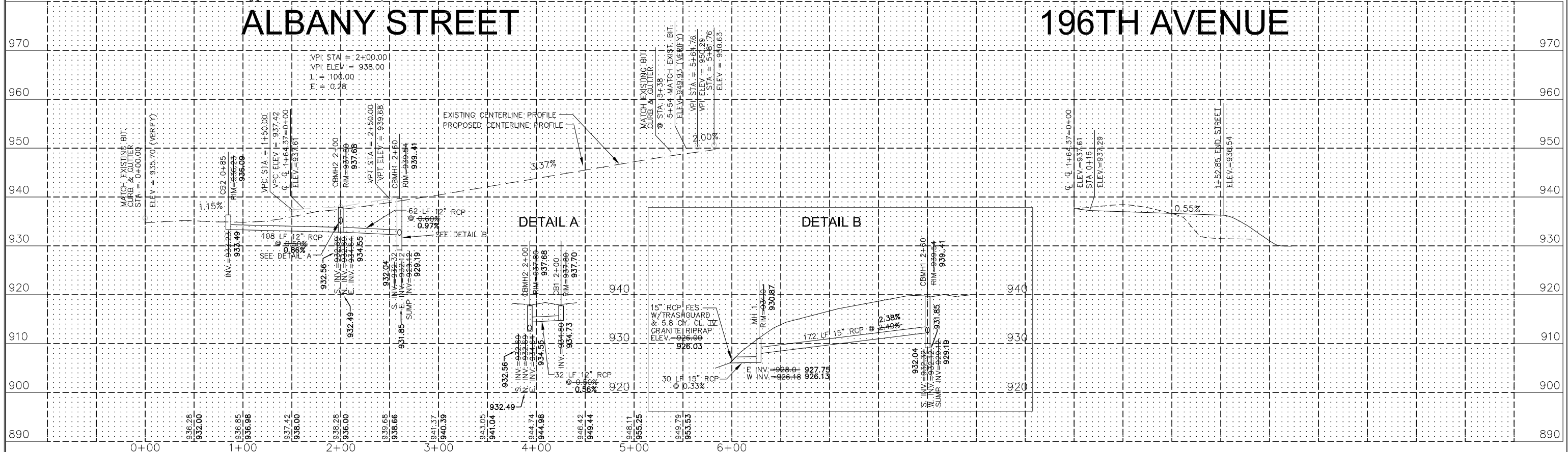
\* LABELED STORM SEWER



NOTE: SHOP DRAWINGS FOR ALL STREET SIGNS SHALL BE REVIEWED AND APPROVED BY THE CITY OF ELK RIVER STREET DEPARTMENT PRIOR TO INSTALLATION.

Record Plans  
10-09-15  
Utility Contractor: Hennen Construction  
Grading Contractor: Omann Brothers Paving, Inc.  
\*Note: Rim and invert elevations provided by Otto Associates. All other record plan information provided by the City of Elk River.

NOTES:  
1. ALL STORM SEWER SHALL BE RCP CLASS 5 UNLESS OTHERWISE NOTED.



REV. NO.	DATE	BY	DESCRIPTION

DESIGNED	DRAWN
C.S.O.	M.L.H.
CHECKED	
C.S.O.	

12-1-15

www.ottoassociates.com  
9 West Division Street  
Buffalo, MN 55313  
(763)682-4727  
Fax: (763)682-3522  
Engineers & Land Surveyors, Inc.

PRESTIGIOUS WOODLAND HILLS SECOND ADDITION  
BENZINGER PROPERTIES  
ELK RIVER, MN

STREET & STORM SEWER PLAN  
ALBANY STREET  
SHEET NO. 5 OF 11 SHEETS

PROJECT NO:  
13-0210  
DATE:  
12-1-15