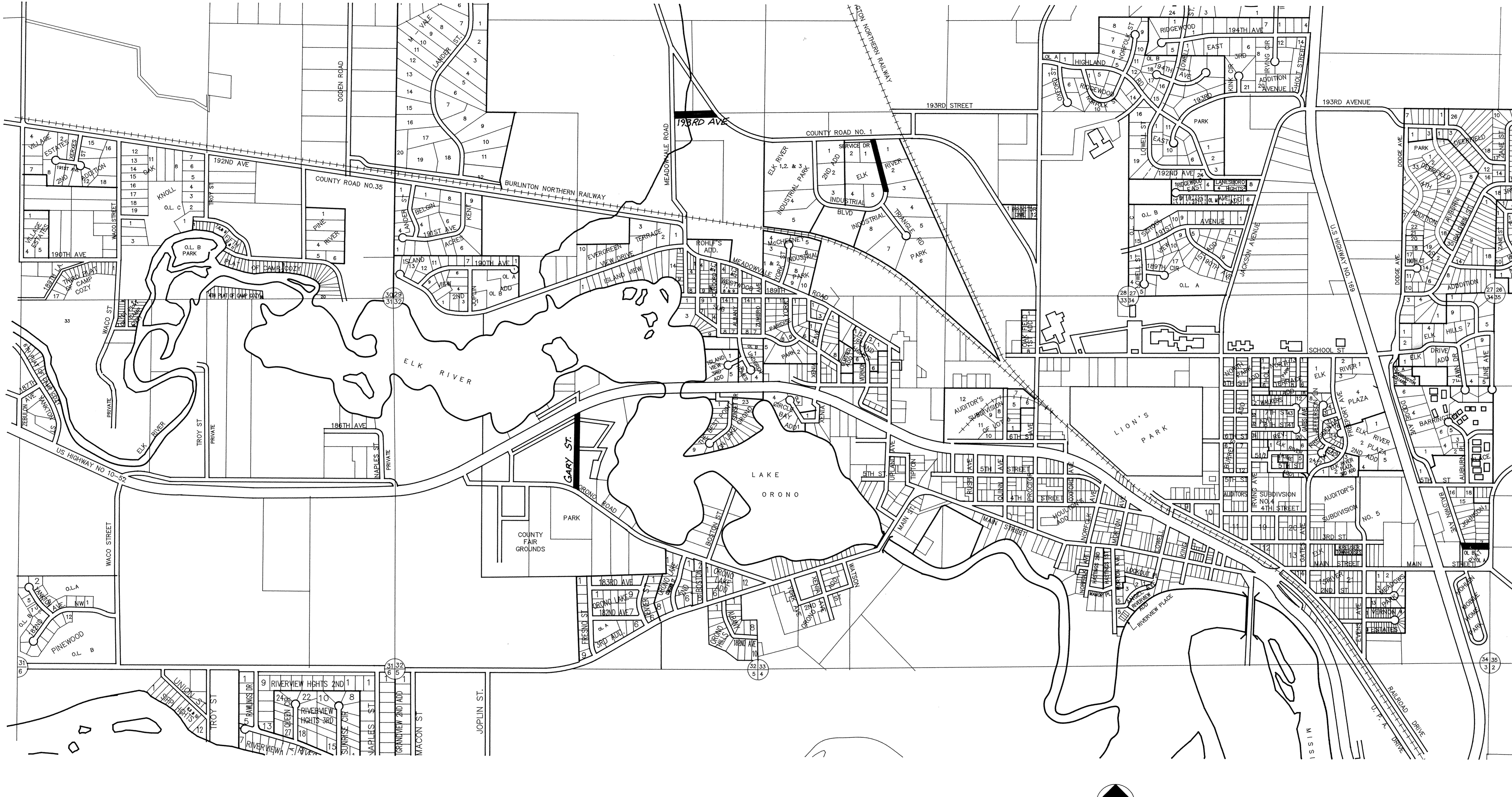


PROJECT PRODUCED BY: MAIER STEWART & ASSOCIATES INC. ENGINEERED BY: PAUL W. MAIER, REGISTERED PROFESSIONAL ENGINEER, LICENSE NO. 100001. DRAWING NO. 230-101. SHEET 1 OF 1. DATE: JULY, 1990.



CITY OF ELK RIVER		1990 OVERLAY IMPROVEMENTS	
DATE	JULY, 1990	SHEET	1 OF 1 SHEETS
PROJECT NO.	230-101		

REVISIONS	DATE	DESCRIPTION	DESIGNED	CHECKED	DRAWN

Maier Stewart & Associates Inc.
 CONSULTING ENGINEERS
 1959 SLOAN PLACE (612) 774-6021 ST. PAUL, MINNESOTA 55117

I HEREBY CERTIFY THAT THIS PLAN, SPECIFICATION, OR REPORT WAS PREPARED BY ME OR UNDER MY DIRECT SUPERVISION AND THAT I AM A DULY REGISTERED PROFESSIONAL ENGINEER UNDER THE LAWS OF THE STATE OF MINNESOTA.

DATE _____ REG. NO. _____