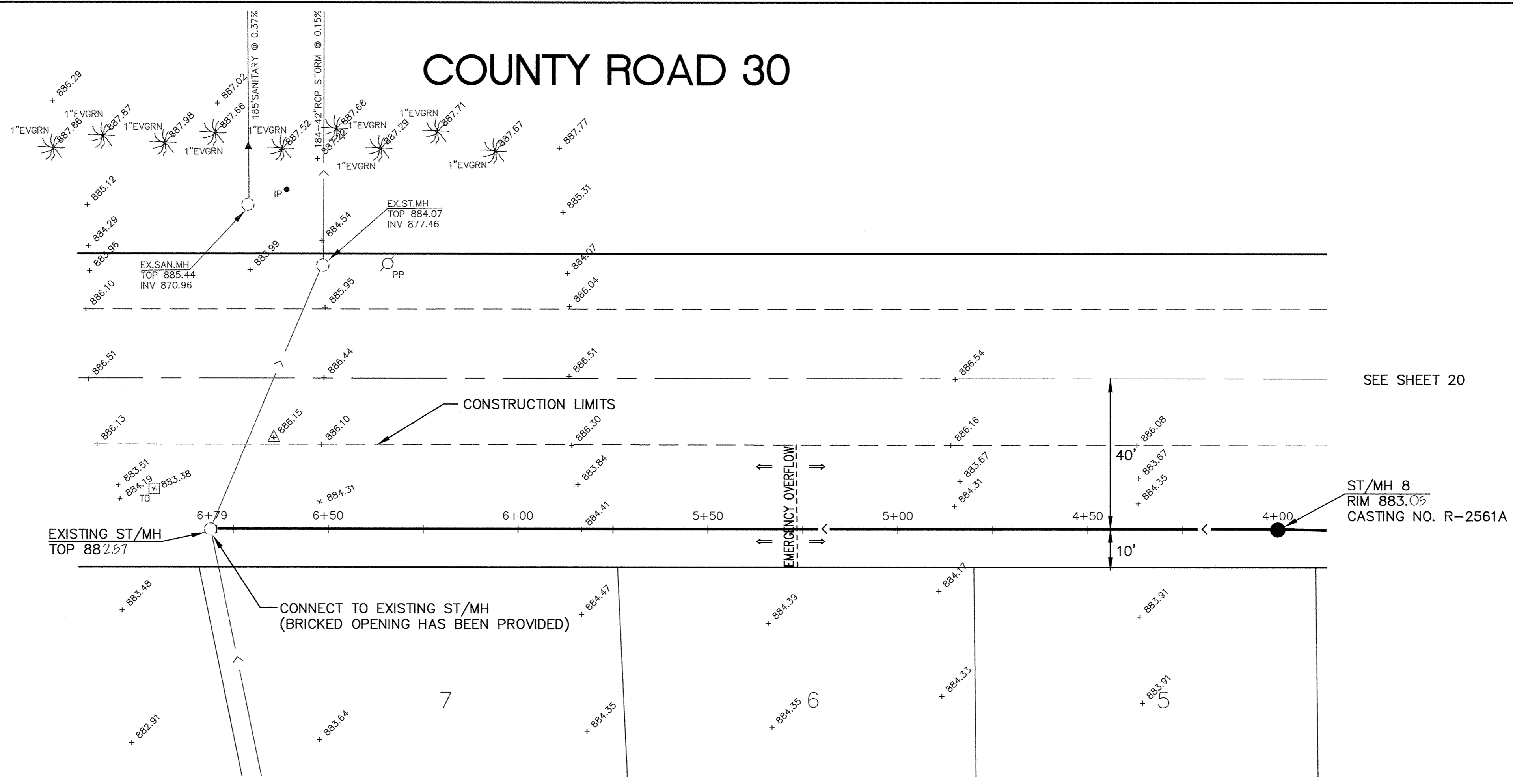
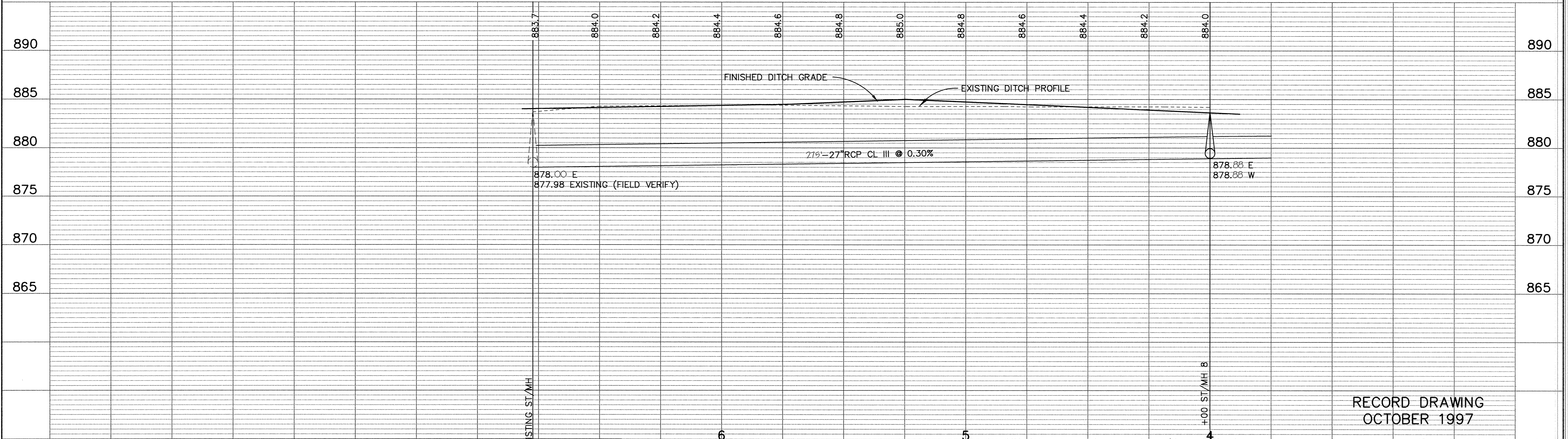
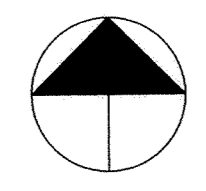


# COUNTY ROAD 30



SEE SHEET 20



RECORD DRAWING  
OCTOBER 1997

I HEREBY CERTIFY THAT THIS PLAN, SPECIFICATION, OR REPORT WAS PREPARED BY ME OR UNDER MY DIRECT SUPERVISION AND THAT I AM A DULY REGISTERED PROFESSIONAL ENGINEER UNDER THE LAWS OF THE STATE OF MINNESOTA. <i>Raymond Mauser</i> DATE 12/4/96 REG. NO. 15316		1326 ENERGY PARK DRIVE ST. PAUL, MINNESOTA 55108 (612) 644-4389	DATE	DESCRIPTION	DESIGNED	SEF		
			REVISIONS 1 2 3 4 5	CHECKED DRAWN RKM	GRAPHIC SCALE 0 20 0 5 VERT.	CITY OF ELK RIVER STREET IMPROVEMENTS COUNTY ROAD 30 4+00 TO 7+00		
			DATE	NOV. 1996	SHEET	21 OF 31 SHEETS	PROJECT NO.	230-340