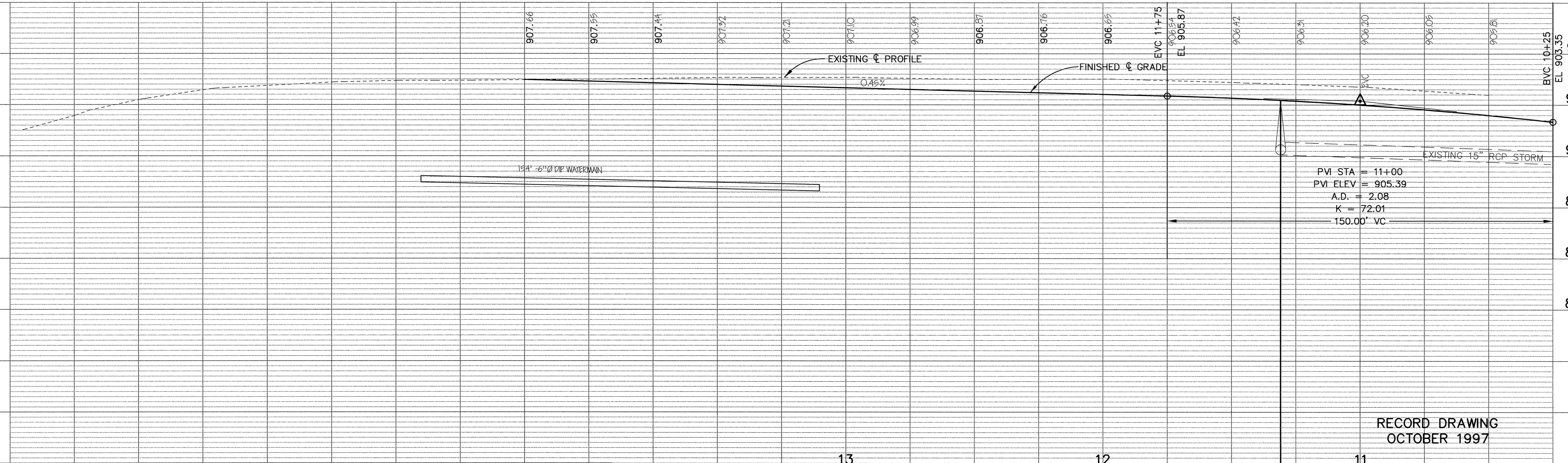
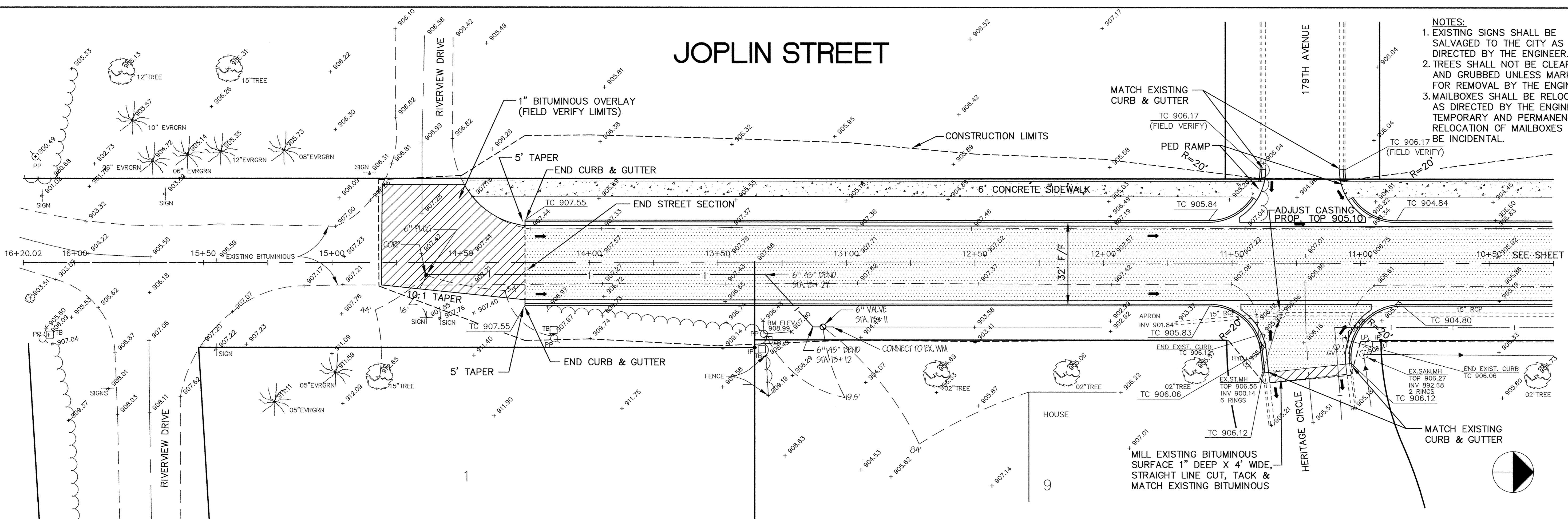


- NOTES:
- EXISTING SIGNS SHALL BE SALVAGED TO THE CITY AS DIRECTED BY THE ENGINEER.
 - TREES SHALL NOT BE CLEARED AND GRUBBED UNLESS MARKED FOR REMOVAL BY THE ENGINEER.
 - MAILBOXES SHALL BE RELOCATED AS DIRECTED BY THE ENGINEER. TEMPORARY AND PERMANENT RELOCATION OF MAILBOXES SHALL BE INCIDENTAL.

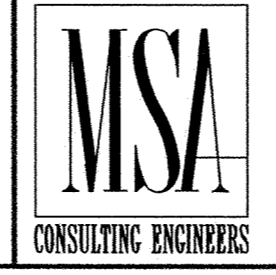
JOPLIN STREET



RECORD DRAWING
OCTOBER 1997

I HEREBY CERTIFY THAT THIS PLAN, SPECIFICATION, OR REPORT WAS PREPARED BY ME OR UNDER MY DIRECT SUPERVISION AND THAT I AM A DULY REGISTERED PROFESSIONAL ENGINEER UNDER THE LAWS OF THE STATE OF MINNESOTA.

Sperry J. Munn
DATE 12/9/94 REG. NO. 15316



1326 ENERGY PARK DRIVE
ST. PAUL, MINNESOTA 55108
(612) 644-4389

REVISIONS	DATE	DESCRIPTION	DESIGNED	CHECKED	DRAWN
			SEF	RKM	RKM

GRAPHIC SCALE
0 20
VERT. 5

CITY OF ELK RIVER
STREET AND UTILITY IMPROVEMENTS
JOPLIN STREET

10+50 TO 16+20.02

DATE NOV. 1996 SHEET 19 OF 31 SHEETS PROJECT NO. 230-340