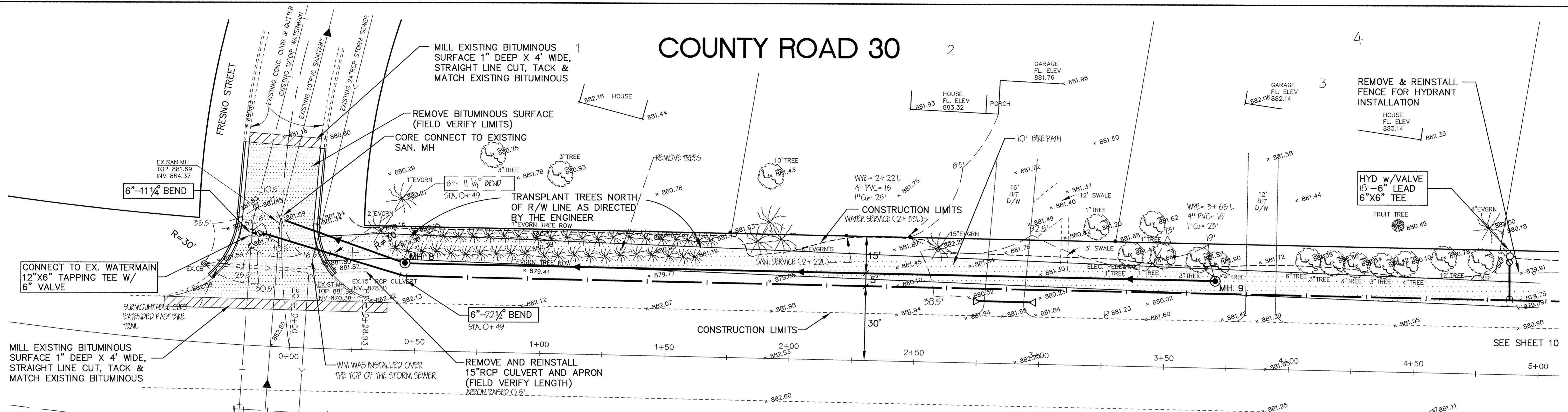
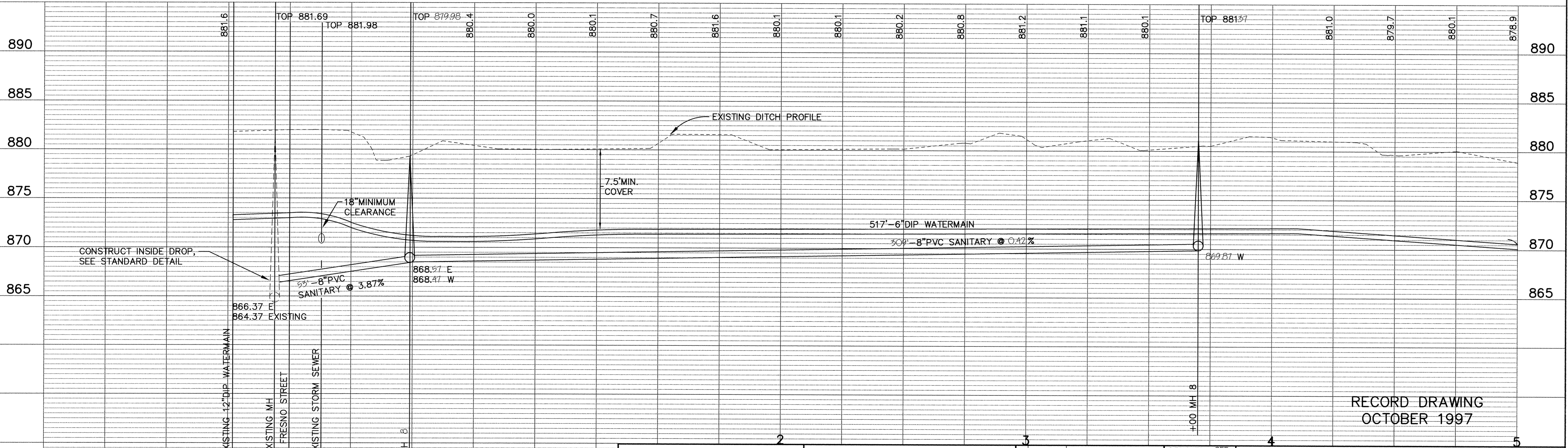


SAVED PRODUCTS • NEW HART, MINNESOTA
REORDER BY PART NUMBER 6522
SAVED PRODUCTS • NEW HART, MINNESOTA
REORDER BY PART NUMBER 6522
SAVED PRODUCTS • NEW HART, MINNESOTA
REORDER BY PART NUMBER 6522
SAVED PRODUCTS • NEW HART, MINNESOTA
REORDER BY PART NUMBER 6522

COUNTY ROAD 30



- NOTES:**
- EXISTING SIGNS SHALL BE SALVAGED TO THE CITY AS DIRECTED BY THE ENGINEER
 - TREES SHALL NOT BE CLEARED AND GRUBBED UNLESS MARKED FOR REMOVAL BY THE ENGINEER
 - ALL SERVICES 11" DEEP AT PROPERTY LINE.



RECORD DRAWING
OCTOBER 1997

I HEREBY CERTIFY THAT THIS PLAN, SPECIFICATION, OR REPORT WAS PREPARED BY ME OR UNDER MY DIRECT SUPERVISION AND THAT I AM A DULY REGISTERED PROFESSIONAL ENGINEER UNDER THE LAWS OF THE STATE OF MINNESOTA.

Kevin Mauer
DATE 12/1/96 REG. NO. 15316



1326 ENERGY PARK DRIVE
ST. PAUL, MINNESOTA 55108
(612) 644-4389

REVISIONS	DATE	DESCRIPTION

DESIGNED	SEF
CHECKED	RKM
DRAWN	RKM
GRAPHIC SCALE	
0	20
VERT. 5	

CITY OF ELK RIVER ORONO LAKE 3RD ADDITION STREET AND UTILITY IMPROVEMENTS COUNTY ROAD 30			
0+00 TO 5+00			
DATE	NOV. 1996	SHEET	9 OF 31 SHEETS
PROJECT NO.	230-320		